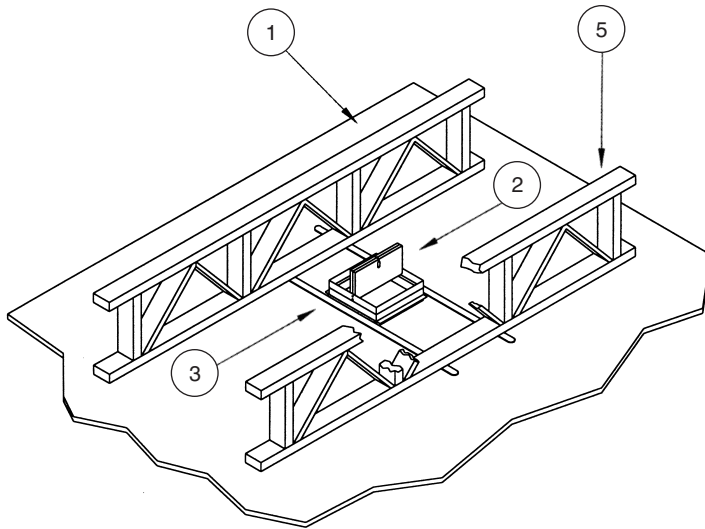


CFD7T BOOT CLIP INSTALLATION SUPPLEMENT

APPLICATION

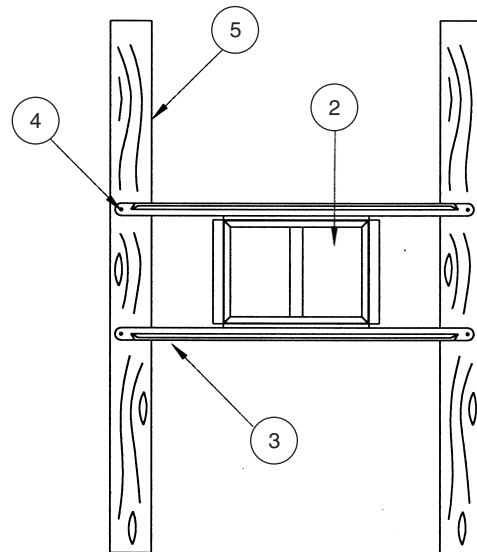
Ceiling fire damper installed in ceiling/floor or ceiling/roof assembly.

ITEM	DESCRIPTION
1.	Floor/ceiling or roof/ceiling assembly
2.	CFD7T ceiling fire damper
3.	Steel boot clip
4.	Minimum #8 sheet metal screw
5.	Wood ceiling joists



Notes:

1. CFD's are shipped from the factory with the blades in the closed position. The fusible link must be installed to hold the blades in the open position at the time of installation.
2. Screws, bolts, rivets, etc, **MUST NOT INTERFERE WITH BLADE OPERATION.**
3. The ceiling damper and its components must be installed and supported as illustrated.
4. Dimensions shown in parentheses () indicate millimeters.



Installation

1. The boot clip installation shown above is not a UL tested installation but represents an alternate installation method, allowed by code. Consult the local authority having jurisdiction for approval.
2. Ceiling penetration should be located in between floor/ceiling or roof/ceiling joist. The opening in the gypsum board should have no gaps larger than 1/16" (1.5) between the damper frame and the gypsum board.
3. Attach the steel boot clips onto opposite sides by snapping the clips onto the damper box flange.
4. Attach the steel boot clips to the bottom side of the wood joists using 1/2" (13) long wood screws.

ITEM DESCRIPTION

ITEM	DESCRIPTION
1.	Floor/ceiling or roof/ceiling assembly
2.	CFD7T ceiling fire damper
3.	Steel boot clip
4.	Minimum #8 sheet metal screw
5.	Wood ceiling joists

Note: For additional duct connections and methods of installation, refer to standard CFD7T installation instructions.

RUSKIN[®]

3900 Dr. Greaves Rd.
Kansas City, MO 64030
(816) 761-7476
FAX (816) 765-8955
www.ruskin.com