

## CFD(R)2W and CFD(R)3W CEILING FIRE DAMPERS Warnock Hersey Classified Radiation Dampers

### APPLICATION

The CFD2(R)W and CFD3(R)W are Warnock Hersey classified ceiling fire (radiation) dampers. They provide protection to penetrations of up to 324 sq. in. (3716) (maximum opening size) through fire rated ceilings with fire resistance ratings of 3 hours or less.

### STANDARD CONSTRUCTION

#### FRAME

20 gauge (.9) galvanized steel. Frame depths are as shown in the following chart.

DAMPER MODEL	FRAME STYLE	B DIMENSION or D DIAMETER	FRAME DEPTH
CFD2W/ CFD3W	Standard	All sizes	3 <sup>1</sup> / <sub>8</sub> " (79)
	Extended	4" to 10" (102 to 254)	6 <sup>5</sup> / <sub>16</sub> " (160)
		11" to 14" (279 to 356) over 14 to 24" (to 607)	8 <sup>1</sup> / <sub>8</sub> " (206) 11 <sup>3</sup> / <sub>16</sub> " (283)
CFDR2W/ CFDR3W	Standard	All sizes	3 <sup>5</sup> / <sub>8</sub> " (92)
	Extended	5" to 15" (127 to 381) over 15" to 20" (to 508)	6 <sup>3</sup> / <sub>4</sub> " (171) 11 <sup>3</sup> / <sub>4</sub> " (298)

#### BLADE

20 gauge (.9) galvanized steel, with UL Classified insulation as required.

#### FUSIBLE LINK

165°F (74°C) is standard. 212°F (100°C) and 285°F (141°C) are available at no additional cost.

#### MINIMUM SIZE (Damper Sizes)

CFD2W/CFD3W/3.5W – 5" w x 4" h (127 x 102)

CFDR2W – 12" (305) diameter.

CFDR3W – 5" (127) diameter.

#### MAXIMUM SIZE (Damper Sizes)

CFD3W/3.5W – 70 sq. in. (452) maximum.

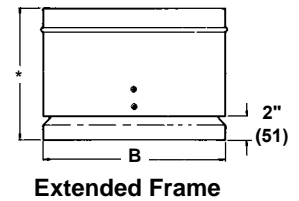
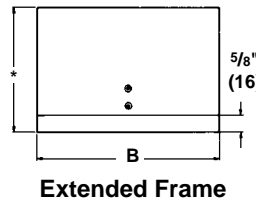
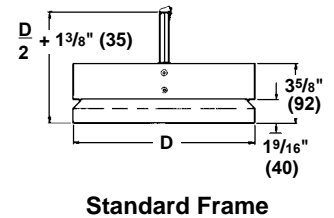
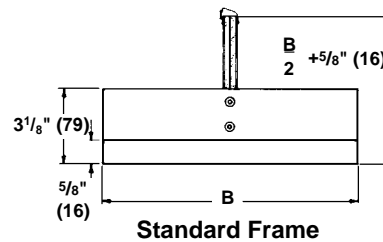
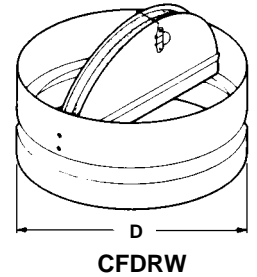
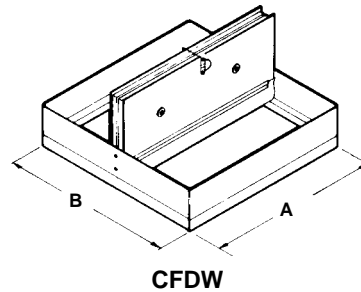
CFD2W - 324 sq. in. with height or width dimensions not greater than 24" (607)

CFDR3W – 10" (254) diameter.

### OPTIONS

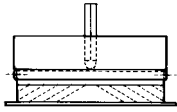
- VA Volume Adjust to balance airflow.

Dimensions shown in parentheses ( ) indicate millimeters.



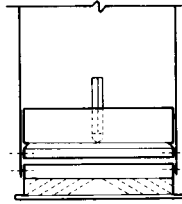
# CFD(R)2W and CFD(R)3W CEILING FIRE DAMPERS

## HOW TO ORDER



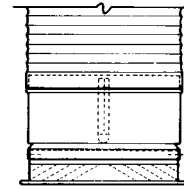
### Ductless Installation

Order "actual size" with **standard** frame. Damper installs over dif-fuser neck.



### Steel Duct Installation

Order "deduct 1/4" (6)" with **stan-dard** frame. Damper installs inside duct.

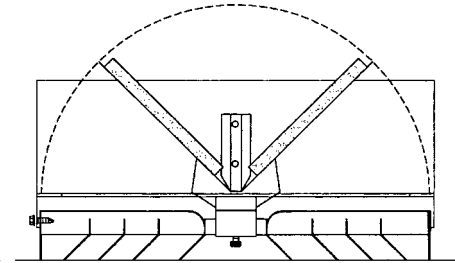


### Flex Duct Installation

Order "actual size" with **extended** frame. Damper installs over dif-fuser neck; flex duct installs over damper.

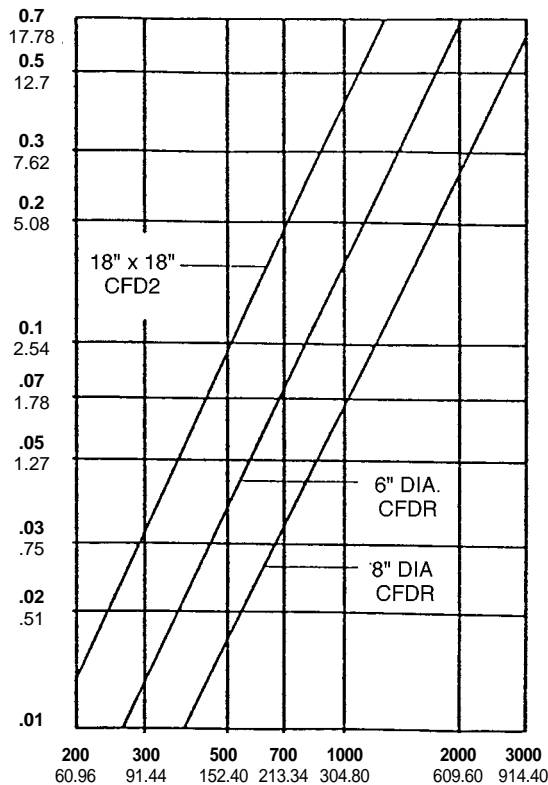
## UL Listed Fusible Volume Adjustment Option

The standard, fusible link can be replaced with a simple mecha-nism that permits adjustment of damper blades to balance airflow. A standard 3/16" (5) hex (Allen) wrench is used for adjustment. In fire conditions, the damper closes regardless of volume setting. This feature must be added to the damper at fabrication. 165°F or 212°F (74°C or 100°C) (specify temperature) fusible volume adjustment options are available. **Caution: Volume Adjust hangs below a rectangular damper 1 1/8" (29). Volume Adjust hangs below a round damper 3/8" (10).**



CFD(R)W 2, 3 with Fusible Volume Adjustment

## Pressure Drop – Damper Open (Size as noted)



Air Velocity in FEET and METERS per minute through FACE AREA.  
Tested per AMCA Std. 500, Fig. 5.2, ductwork upstream.

# RUSKIN®

3900 Dr. Greaves Rd.  
Kansas City, MO 64030  
(816) 761-7476  
FAX (816) 765-8955  
www.ruskin.com