



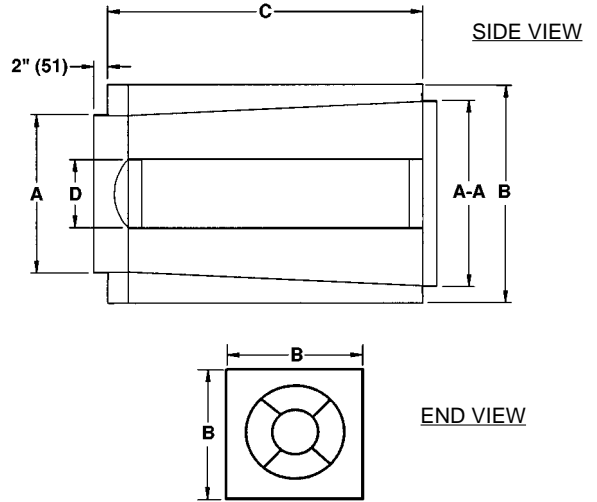
**ACOUSTICAL DIFFUSER
FOR VANE AXIAL FAN
MODEL XFA**

3900 Dr. Greaves Rd., Kansas City, MO 64030 • Phone (816) 761-7476 • FAX (816) 763-0986 • Email: info@ruskinsound.com • Website: ruskinsound.com

**MODEL XFA
CONSTRUCTION STANDARDS**

- Outer Shell: 18 gage
- Interior Shell: 22 gage - Perforated
- Insulation: Glass Fiber packed under 5% compression
- Connection: 2" (51) Collar

NOTE: Dimensions in parentheses () indicate millimeters.



FAN SIZE A	A-A	B	C	D	WEIGHT
23 1/4	28	32	46	Hub Dia.	150
25 1/4	32	36	46	Hub Dia.	163
27 1/4	34	38	46	Hub Dia.	174
29 1/4	36	40	46	Hub Dia.	180
32	40	44	46	Hub Dia.	216
34	42	46	50	Hub Dia.	259
36	44	48	50	Hub Dia.	363
38	48	52	50	Hub Dia.	389
42 1/4	52	57	50	Hub Dia.	407
45	56	61	58	Hub Dia.	574
48	60	65	58	Hub Dia.	638
54	66	72	58	Hub Dia.	766
60	72	80	86	Hub Dia.	1298
66	80	89	86	Hub Dia.	1687
72	88	95	118	Hub Dia.	2193
78	96	103	118	Hub Dia.	2852
84	104	111	118	Hub Dia.	3707

PERFORMANCE DATA

Dynamic Insertion loss (DIL) in db, Face Velocity in FPM, Static Pressure (SP) in " H2O

Octave Band			1	2	3	4	5	6	7	8
Center Frequency HZ			63	125	250	500	1000	2000	4000	8000
DIL @	0 FPM	.000" SP	5	9	16	27	34	25	16	13
DIL @	1000 FPM	.010" SP	5	9	15	27	34	25	17	13
DIL @	2000 FPM	.035" SP	4	8	15	26	33	25	17	14
DIL @	4000 FPM	.142" SP	4	8	14	24	32	26	17	15