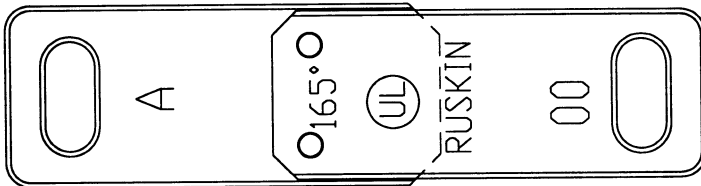


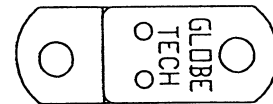
## FUSE LINK ACCESSORIES FOR IBD, CFD, FD, AND FSD MODELS

**FUSE LINK**  
Specify 165°F, 212°F, or 285°F  
(74°C, 100°C or 141°C)

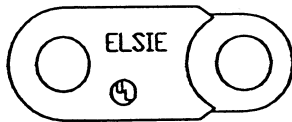
**Issue A Link**  
All (D)IBD Curtain Type Fire Dampers  
Excluding IBDT Series



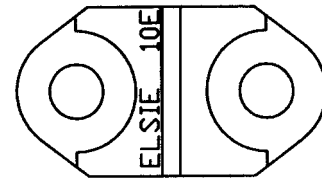
**J Link**  
All CFD Ceiling Fire Dampers  
All PFL's (Pneumatic Fuse Links)



**Issue B Link**  
For IBDT Curtain Type Fire Dampers  
For FDR25 Round Fire Dampers  
Also may be used as a replacement  
on CFD Ceiling Fire Dampers



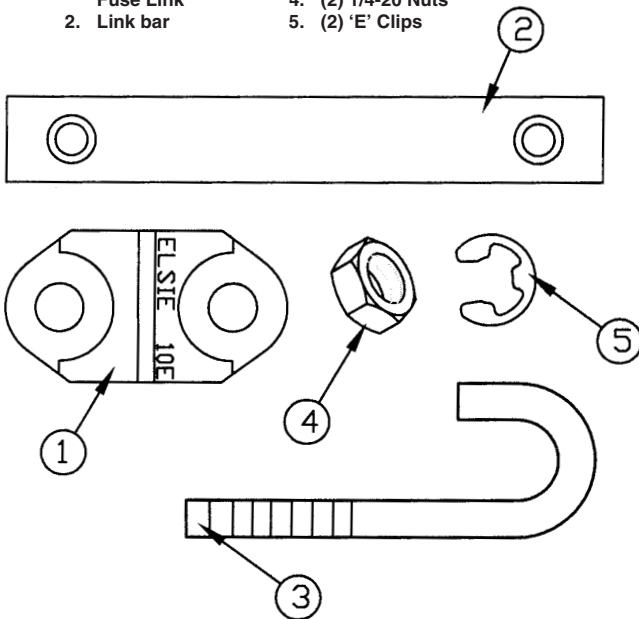
**Issue E Link**  
FD35 and FD36  
Multiple Blade Fire Dampers



**FUSE LINK**  
Specify 165°F, 212°F, or 285°F  
(74°C, 100°C or 141°C)

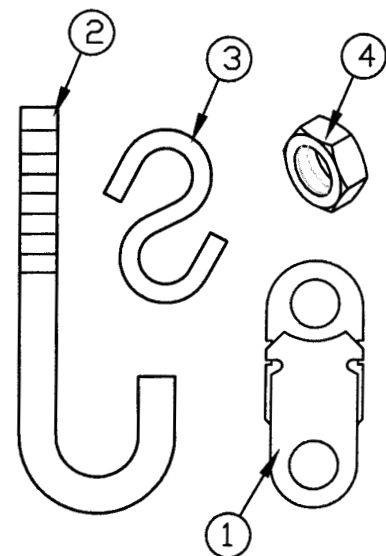
**FD Fuse Link Assembly**

- |                        |                     |
|------------------------|---------------------|
| 1. Issue 'E' Fuse Link | 3. (2) 'S' Hooks    |
| 2. Link bar            | 4. (2) 1/4-20 Clips |
|                        | 5. (2) 'E' Clips    |



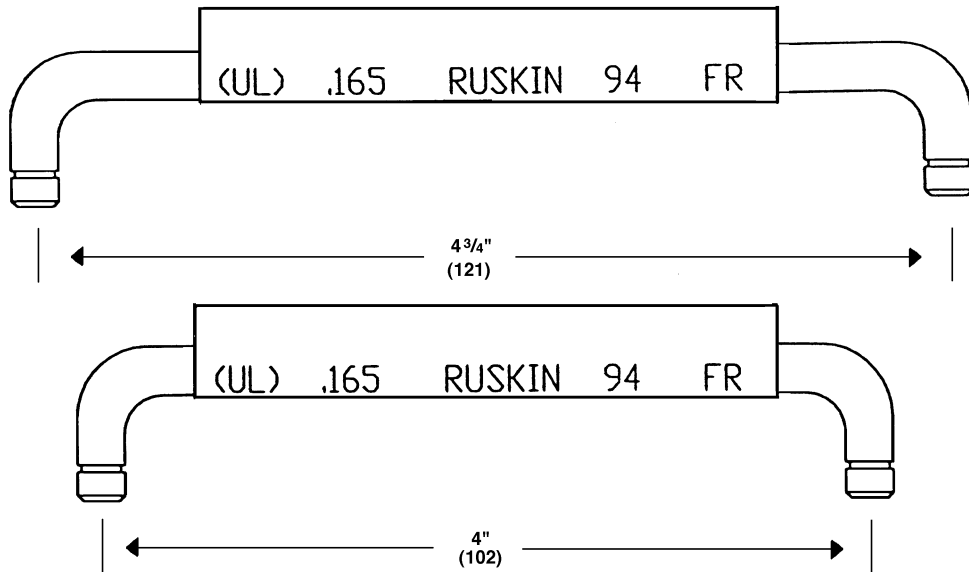
**FDR Fuse Link Assembly**

- |                        |                    |
|------------------------|--------------------|
| 1. Issue 'B' Fuse Link | 3. (2) 'S' Hooks   |
| 2. 'J' Bolt            | 4. (2) 1/4-20 Nuts |



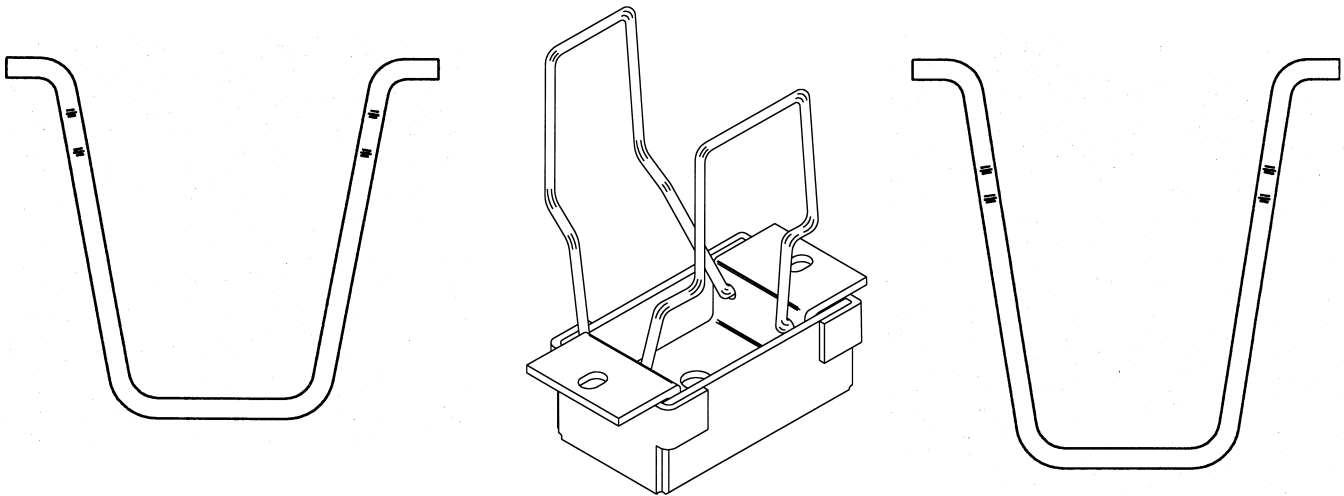
---

**4935 FUSIBLE ROD (NO LONGER USED)**  
Specify 165°F or 212°F (74°C or 100°C)  
for all FSD Series Combination Fire Smoke Damper models  
(excluding FSDR25) manufactured prior to 1996  
Refer to EFL or PFL spec sheets for dampers manufactured after 1996.



---

**VOLUME ADJUST**  
Specify 165°F or 212°F (74°C or 100°C)  
option for all Ceiling Fire Dampers (CFD's)



Lift arms are shown actual size.

**RUSKIN<sup>®</sup>**

3900 Dr. Greaves Rd.  
Kansas City, MO 64030  
(816) 761-7476  
FAX (816) 765-8955  
www.ruskin.com

Printed on recycled paper  
using vegetable based inks

