

ELC6375DAX DRAINABLE COMBINATION LOUVER EXTRUDED ALUMINUM

STANDARD CONSTRUCTION

FRAME

6" (152) deep, 6063T6 extruded aluminum with .125" (3.2) nominal wall thickness. Downspouts and caulking surfaces provided.

BLADES

Front stationary drainable blades – 6063T6 extruded aluminum with .081" (2.1) nominal wall thickness, positioned at 37 1/2° angle and spaced approximately 6 1/8" (156) on center. Rear adjustable airfoil blades – 6063T6 extruded aluminum, .140" (3.6) nominal wall thickness.

SCREEN

5/8" x .040 (16 x 1) expanded, flattened aluminum bird screen in removable frame. Screen adds approximately 1/2" (13) to louver depth.

SEALS

Extruded vinyl blade edge seals on rear adjustable blades and flexible, compressible aluminum jamb seals.

LINKAGE

Concealed in frame.

BEARINGS

Stainless steel sleeve pressed into frame.

AXLES

1/2" (13) plated steel hex.

ACTUATOR

Locking louver quadrant.

FINISH

Mill.

MINIMUM SIZE

12"w x 12"h (305 x 305).

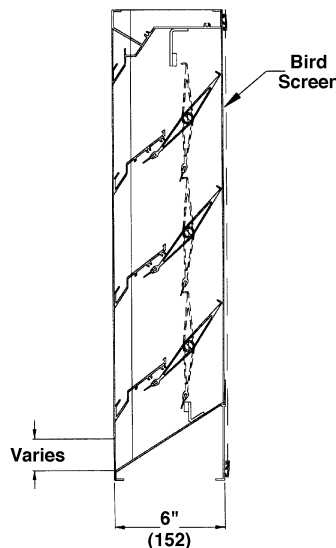
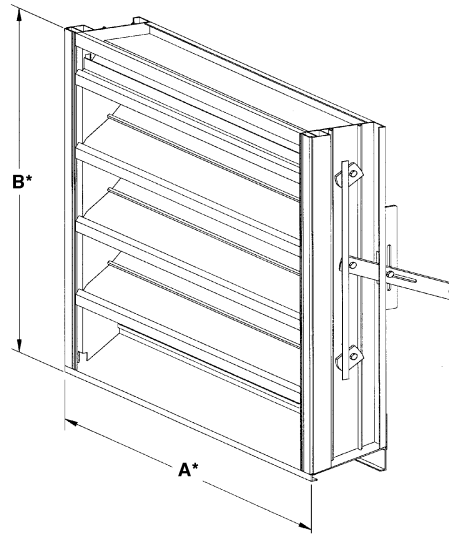
APPROXIMATE SHIPPING WEIGHT

8 lbs. per sq. ft. (39.1 kg per m²).

MAXIMUM FACTORY ASSEMBLY SIZE

Shall be 120"w x 96"h (3048 x 2438) with standard frame, 120"w x 93"h (3048 x 2362) with integral flange frame. Maximum operating section width is 60" (1524).

Louvers larger than the maximum factory assembly size will require field assembly of smaller sections.



FEATURES

The ELC6375DAX offers:

- 47% Free Area.
- Published performance ratings based on testing in accordance with AMCA Publication 511.
- Concealed blade linkage is protected from weather exposure and reduces required installation depth.
- Adjustable rear blades provide desired shut off in the same 6" (152) deep frame normally required by a louver alone.
- Blade and jamb seals provide tight closure.
- High performance frame system with drainable head collects and removes water to provide excellent water penetration performance.
- A drain gutter in each front stationary blade minimizes water cascade between blades.
- Architecturally styled hidden mullions allowing continuous line appearance up to 120" (3048).

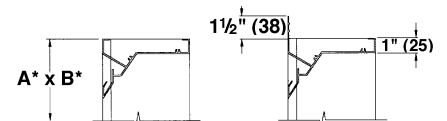
VARIATIONS

Variations to the basic design of the louver are available at additional cost. They include:

- Extended sill.
- Hinged frame.
- Front or rear security bars.
- Filter racks.
- Installation angles.
- A variety of bird and insect screens.
- A selection of manual, electric, and pneumatic actuators.
- Selection of finishes: prime coat, baked enamel (modified fluoropolymer), epoxy, Acrodize, Kynar, clear and color anodize. (Some variation in anodize color consistency is possible).

Consult Ruskin for other special requirements.

FRAME CONSTRUCTION



STANDARD

INTEGRAL FLANGE

Dimensions in inches, parenthesis () indicate millimeters.

TAG	QTY.	SIZE		FRAME	VARIATIONS
		A*-WIDE	B*-HIGH		
PROJECT ARCH./ENGR. REPRESENTATIVE				LOCATION CONTRACTOR DATE	

PERFORMANCE DATA

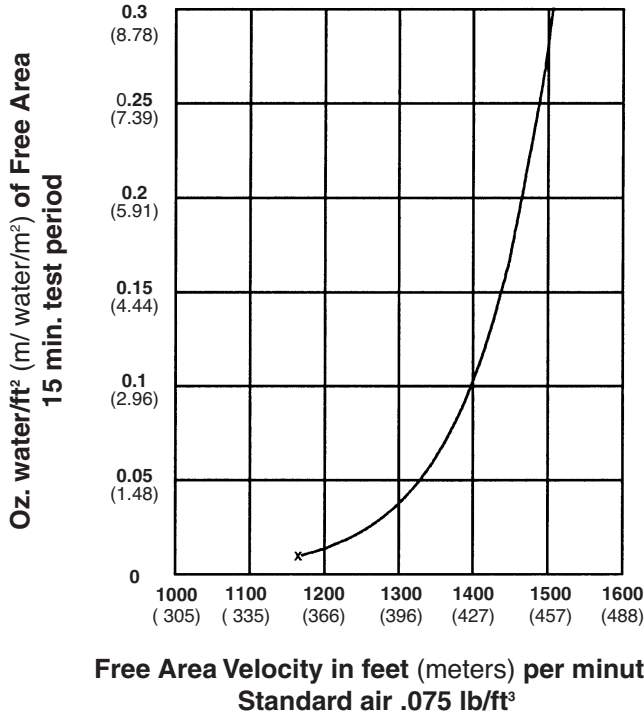
AMCA Standard 500 provides a reasonable basis for testing and rating louvers. Testing to AMCA 500 is performed under a certain set of laboratory conditions. This does not guarantee that other conditions will not occur in the actual environment where louvers must operate.

The louver system should be designed with a reasonable safety factor for louver performance. To ensure protection from water carry-over, design with a performance level somewhat below maximum desired pressure drop and .01 oz./sq. ft. of water penetration.

WATER PENETRATION

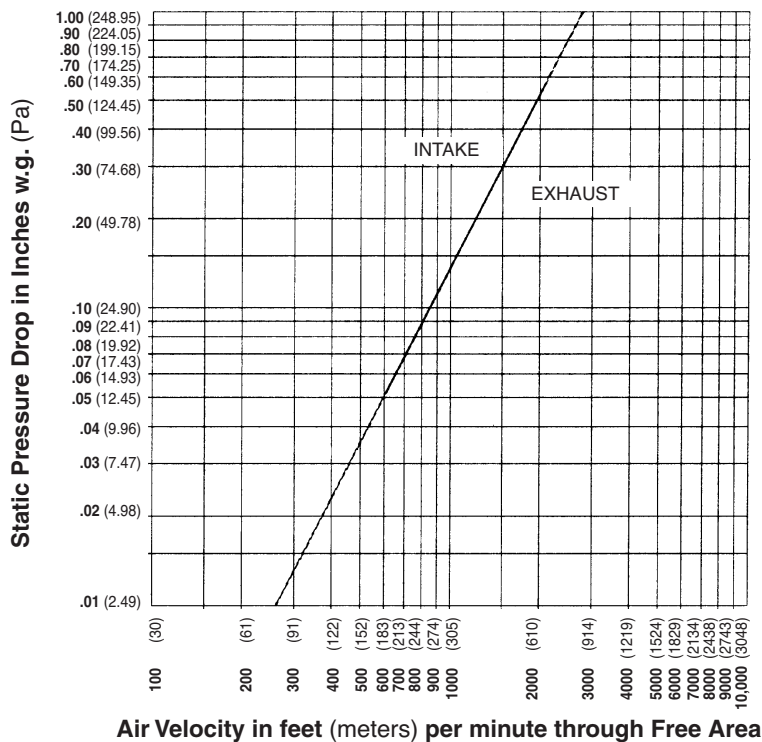
Test size 48" wide x 48" high (1219 x 1219)

Beginning point of water penetration at .01 oz./sq. ft. is 1169 fpm (356 m/min).



Ruskin Manufacturing Company certifies that the ELC6375DAX louvers shown herein are licensed to bear the AMCA Seal. The ratings shown are based on tests and procedures performed in accordance with AMCA Publication 511 and comply with the requirements of the AMCA Certified Ratings Program. The AMCA Certified Ratings Seal applies to air performance rating and water penetration ratings only.

PRESSURE DROP



Ratings do not include the effect of a bird screen.

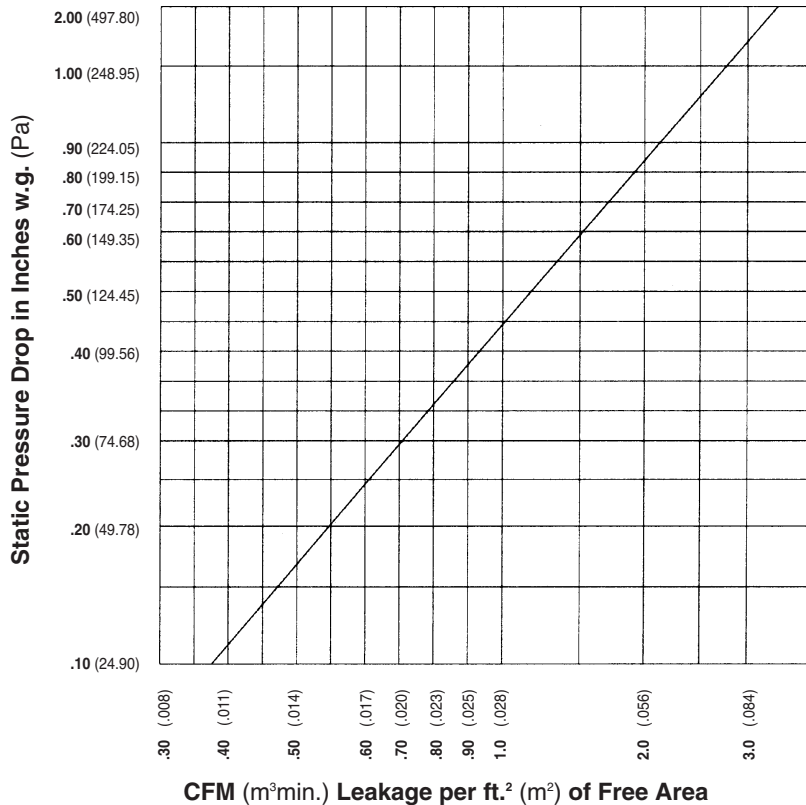
FREE AREA GUIDE

Free Area Guide shows free area in ft² and m² for various sizes of ELC6375DAX.

Width – Inches (Meters)

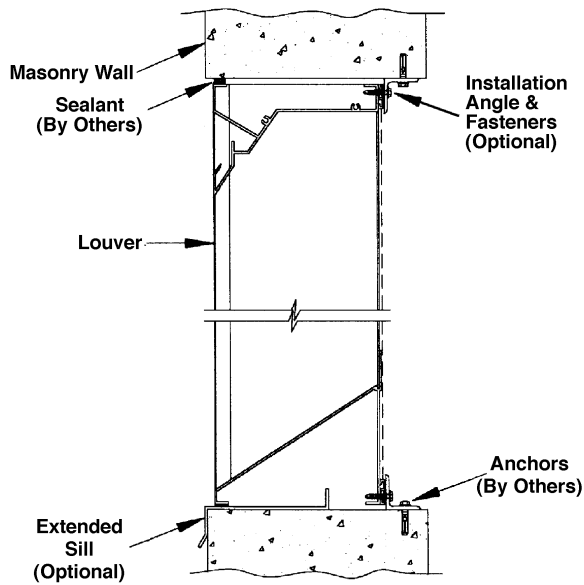
	12	18	24	30	36	42	48	54	60	66	72	78	84	90	96	102	108	114	120
	0.30	0.46	0.61	0.76	0.91	1.07	1.22	1.37	1.52	1.68	1.83	1.98	2.13	2.29	2.44	2.59	2.74	2.90	3.05
18	0.48	0.77	1.06	1.35	1.64	1.93	2.21	2.50	2.79	2.94	3.23	3.51	3.80	4.09	4.38	4.67	4.96	5.25	5.54
0.46	0.04	0.07	0.10	0.13	0.15	0.18	0.21	0.23	0.26	0.27	0.30	0.33	0.35	0.38	0.41	0.43	0.46	0.49	0.51
24	0.69	1.11	1.52	1.94	2.35	2.77	3.18	3.60	4.01	4.22	4.64	5.05	5.47	5.88	6.30	6.71	7.13	7.54	7.96
0.61	0.06	0.10	0.14	0.18	0.22	0.26	0.30	0.33	0.37	0.39	0.43	0.47	0.51	0.55	0.59	0.62	0.66	0.70	0.74
30	0.93	1.48	2.04	2.59	3.15	3.70	4.26	4.81	5.37	5.64	6.20	6.75	7.31	7.86	8.42	8.97	9.53	10.09	10.64
0.76	0.09	0.14	0.19	0.24	0.29	0.34	0.40	0.45	0.50	0.52	0.58	0.63	0.68	0.73	0.78	0.83	0.89	0.94	0.99
36	1.16	1.85	2.55	3.24	3.94	4.63	5.33	6.03	6.72	7.07	7.76	8.46	9.15	9.85	10.54	11.24	11.93	12.63	13.32
0.91	0.11	0.17	0.24	0.30	0.37	0.43	0.50	0.56	0.62	0.66	0.72	0.79	0.85	0.92	0.98	1.05	1.11	1.17	1.24
42	1.39	2.23	3.06	3.90	4.73	5.57	6.40	7.24	8.07	8.49	9.33	10.16	11.00	11.83	12.67	13.50	14.34	15.17	16.01
1.07	0.13	0.21	0.29	0.36	0.44	0.52	0.60	0.68	0.75	0.79	0.87	0.95	1.03	1.10	1.18	1.26	1.34	1.42	1.49
48	1.63	2.60	3.58	4.55	5.53	6.50	7.48	8.45	9.43	9.92	10.89	11.87	12.84	13.82	14.79	15.77	16.74	17.72	18.69
1.22	0.15	0.24	0.33	0.42	0.51	0.60	0.70	0.79	0.88	0.92	1.01	1.10	1.19	1.29	1.38	1.47	1.56	1.65	1.74
54	1.86	2.97	4.09	5.21	6.32	7.44	8.55	9.67	10.78	11.34	12.46	13.57	14.69	15.80	16.92	18.03	19.15	20.26	21.38
1.37	0.17	0.28	0.38	0.48	0.59	0.69	0.80	0.90	1.00	1.05	1.16	1.26	1.37	1.47	1.57	1.68	1.78	1.88	1.99
60	2.09	3.35	4.60	5.86	7.11	8.37	9.63	10.88	12.14	12.76	14.02	15.28	16.53	17.79	19.04	20.30	21.55	22.81	24.06
1.52	0.19	0.31	0.43	0.54	0.66	0.78	0.90	1.01	1.13	1.19	1.30	1.42	1.54	1.65	1.77	1.89	2.00	2.12	2.24
66	2.33	3.72	5.12	6.51	7.91	9.30	10.70	12.09	13.49	14.19	15.58	16.98	18.37	19.77	21.17	22.56	23.96	25.35	26.75
1.68	0.22	0.35	0.48	0.61	0.74	0.87	1.00	1.12	1.25	1.32	1.45	1.58	1.71	1.84	1.97	2.10	2.23	2.36	2.49
72	2.56	4.09	5.63	7.17	8.70	10.24	11.77	13.31	14.84	15.61	17.15	18.68	20.22	21.75	23.29	24.83	26.36	27.90	29.43
1.83	0.24	0.38	0.52	0.67	0.81	0.95	1.09	1.24	1.38	1.45	1.59	1.74	1.88	2.02	2.17	2.31	2.45	2.59	2.74
78	2.79	4.47	6.14	7.82	9.50	11.17	12.85	14.52	16.20	17.04	18.71	20.39	22.06	23.74	25.41	27.09	28.77	30.44	32.12
1.98	0.26	0.42	0.57	0.73	0.88	1.04	1.19	1.35	1.51	1.58	1.74	1.90	2.05	2.21	2.36	2.52	2.68	2.83	2.99
84	3.03	4.84	6.66	8.47	10.29	12.11	13.92	15.74	17.55	18.46	20.28	22.09	23.91	25.72	27.54	29.35	31.17	32.99	34.80
2.13	0.28	0.45	0.62	0.79	0.96	1.13	1.29	1.46	1.63	1.72	1.89	2.05	2.22	2.39	2.56	2.73	2.90	3.07	3.24
90	3.26	5.22	7.17	9.13	11.08	13.04	14.99	16.95	18.91	19.88	21.84	23.80	25.75	27.71	29.66	31.62	33.57	35.53	37.49
2.29	0.30	0.49	0.67	0.85	1.03	1.21	1.39	1.58	1.76	1.85	2.03	2.21	2.39	2.58	2.76	2.94	3.12	3.30	3.49
96	3.49	5.59	7.68	9.78	11.88	13.97	16.07	18.16	20.26	21.31	23.40	25.50	27.60	29.69	31.79	33.88	35.98	38.08	40.17
2.44	0.32	0.52	0.71	0.91	1.10	1.30	1.49	1.69	1.88	1.98	2.18	2.37	2.57	2.76	2.96	3.15	3.35	3.54	3.74

AIR LEAKAGE

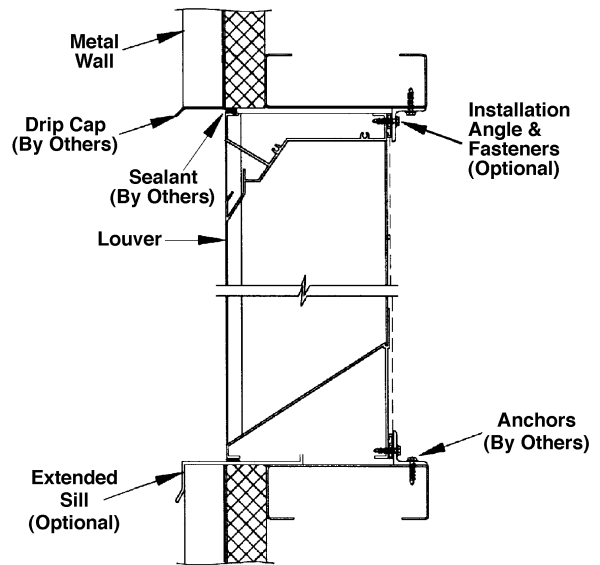


TYPICAL INSTALLATION DETAILS

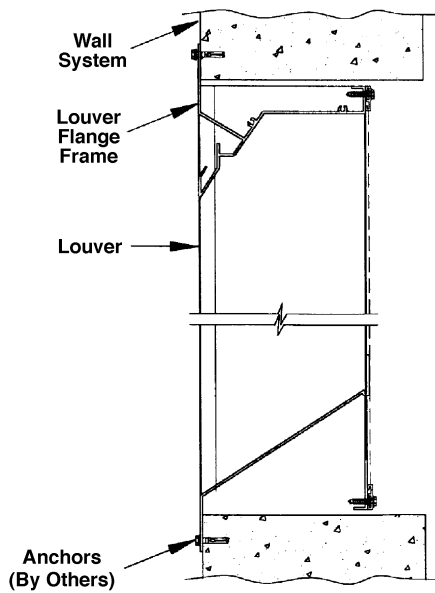
Masonry Wall



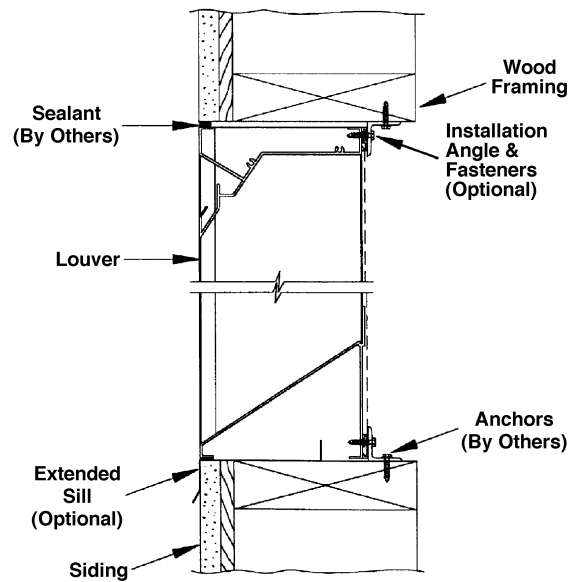
Metal Panel Wall



Flange Mount



Wood Installation



Optional items are available at additional cost.

RUSKIN®

3900 Dr. Greaves Rd.
 Kansas City, MO 64030
 (816) 761-7476
 FAX (816) 765-8955
 www.ruskin.com