

RUSKIN LOUVERS

for Metal Buildings

Custom Built

Performance Tested

Competitively Priced

Quick to Market



RUSKIN[®]

The Experience To Get The Job Done

Ruskin has manufactured louvers for almost every type of application for over 40 years. For the metal building industry, we offer competitively priced, high performance models and accessories that are delivered quickly to the jobsite. Stationary and operable blade models as well as combination louvers/dampers are available in both extruded aluminum and formed steel construction. Ruskin louvers offer several standard features, such as removable bird or insect screens, sturdy channel or flange frames and locking lever actuators on operable models. Other optional accessories include Kynar finishes matched to your specific color, extended sills and other miscellaneous flashing items and factory installed electric or pneumatic actuators. Whether your application requires a mill finish, stationary louver shipped in three days, or a combination louver/damper with electric actuators and a Kynar finish, Ruskin will fulfill your louver requirements.



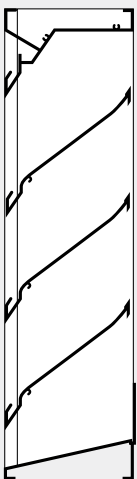
St. Catherine's Village, Madison, MS



Ruskin Headquarters, Kansas City, MO

Stationary Louvers

ELF6375DX

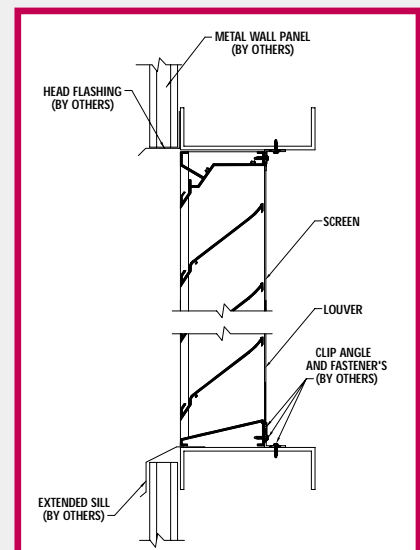


◆ FRONT

Ruskin stationary louvers provide excellent airflow characteristics and protection from weather and pests. The economical L811 formed steel louver provides AMCA licensed performance at a reasonable cost. The extruded aluminum GFL800 and GFL800D offer extruded aluminum durability and a 3 day standard shipping schedule. For higher performance, the L6375D formed steel louver provides high free area and the strength of steel construction. And, the extruded ELF6375DX is the highest performance model with a special drainable frame and blade system that collects and removes water before it can enter the airstream.

■ Features include:

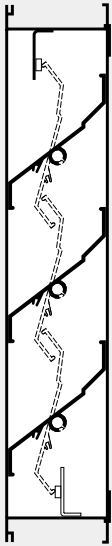
- All welded construction standard on most models
- Channel or flange frames
- Drainable or non-drainable blade styles
- Available in round or triangular shapes



Ruskin utilizes the latest generation CAD software to quickly produce accurate drawings for submittal upon request.

Operable Louvers

ELM811



◀ FRONT

Ruskin operable louvers provide the ability to control airflow as desired. Models are provided with a locking hand actuator as standard equipment, but may be provided with a variety of optional factory installed electric, pneumatic and manual actuators. The formed steel L745 is our most economical operable louver while the extruded aluminum ELM811 adds the corrosion resistance of aluminum. For higher performance, the ELM6375DX combines high free area and standard jamb seals with durable extruded construction.

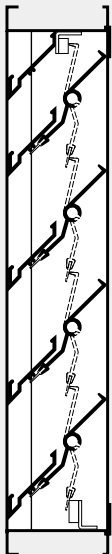
- Features include:
 - Concealed linkage for corrosion resistance and higher free area
 - Optional blade and jamb seals for tight closure (jamb seals are standard on ELM6375X and ELM6375DX)
 - Drainable and non-drainable blade styles



Wal-Mart Distribution Center, Lauren, SC

Combination Louvers

ELC445D



◀ FRONT

Ruskin combination louvers combine the adjustability of operable louvers with the consistent visual appearance of stationary louvers. Operable rear blades control airflow in or out of the building while stationary front blades provide protection from weather and a pleasing appearance. Ruskin model ELC combination louvers are provided with standard blade and jamb seals and a locking hand actuator. Like our operable models, a variety of optional actuators may be factory installed. The LC6375D provides good performance and sturdy formed steel construction. The ELC445D is an economical 4" deep extruded model available on a 5 day shipping schedule. Our ELC6375DAF is the premier combination louver available today featuring durable extruded aluminum construction, an airfoil design operable blade for maximum strength and excellent AMCA licensed performance. For gravity ventilation applications the ELBD812 and ELBD813 combines extruded stationary and backdraft damper blades in a common 4" frame.

- Features include:
 - Standard blade and jamb seals for tight closure and low leakage
 - Concealed linkage is standard
 - Optional, factory installed electric, pneumatic and manual actuators may be provided



Humann Elementary School, Omaha, NE



Gas Orange, Syracuse, NY

RUSKIN LOUVERS

Options / Accessories / Services

Need flashing to cap the sides of the opening? Want a special frame configuration to integrate into the wall system? Let Ruskin provide these items for you. Our manufacturing facilities have computer automated shears

and brakes to fabricate special items to your specification. Items such as installation angles, blankoffs and actuators are also available. This provides a single source for all louver-related items on your job and ensures that their finish will match the louver.

With computer color matching at two separate manufacturing facilities, Ruskin can quickly provide

louvers with Kynar coatings that match the surrounding structure. Available finishes include 50% Kynar for standard use and 70% Kynar 500 for monumental applications. Acrodize Hardcoat, another Kynar-based finish, is an excellent alternative to anodizing and has a hard, abrasion-resistant top coat making it a good choice for storefront applications. Anodize and prime coat finishes are also available.

FOR METAL BUILDINGS

The Engineering Department at Ruskin utilizes the latest generation CAD software to quickly produce accurate drawings for submittal upon request. These drawings indicate actual overall dimensions, finish, color and installation detail information for your review and approval.

Let Ruskin be your source for metal building louvers. Our quality products, competitive pricing and dependable service make us an excellent choice for your ventilation requirements.

RUSKIN®

DAMPERS AND LOUVERS
Specified by Many – Equaled by None

3900 Dr. Greaves Rd., Kansas City, MO 64030
(816)761-7476 Fax: (816)765-8955

www.ruskin.com