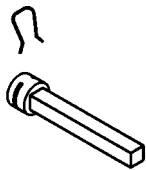
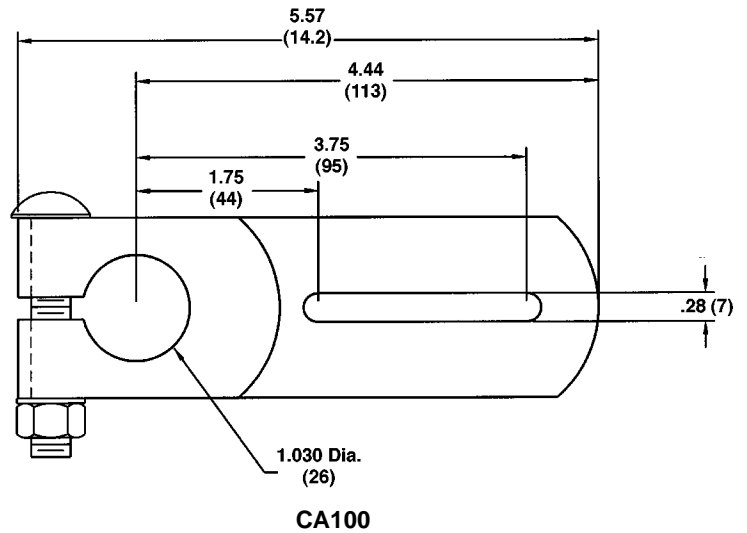
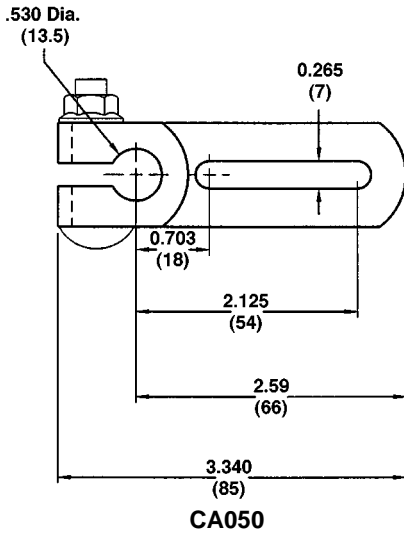
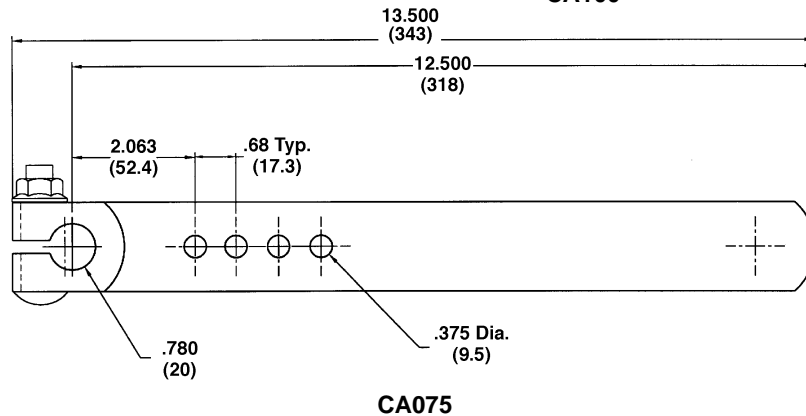


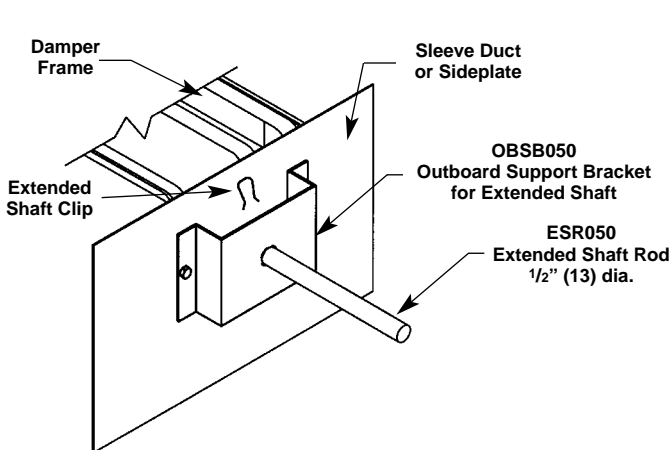
CRANK ARMS, EXTENDED SHAFT AND HAND QUADRANT



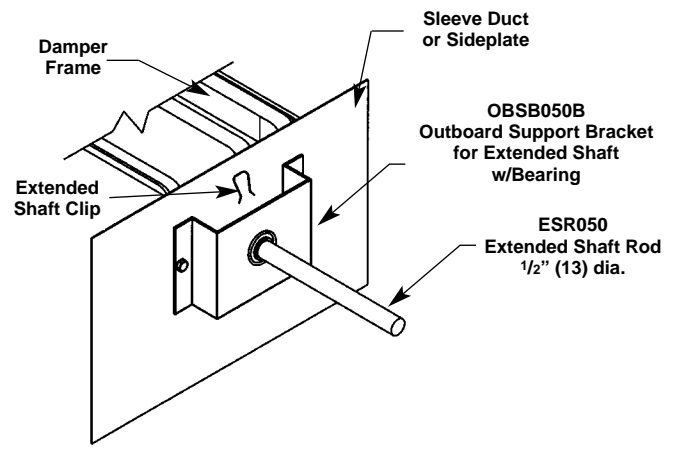
ESS375 W/EXTENDED SHAFT CLIP



EXTENDED SHAFT PARTS AND KIT ESK050, ESR050, OBSB050, OBSB050B



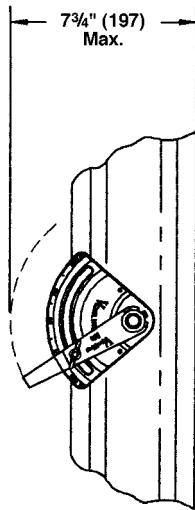
ESK050 includes the ESR050, OBSB050 and extended shaft clip



ESK050B includes the ESR050, OBSB050B and extended shaft clip

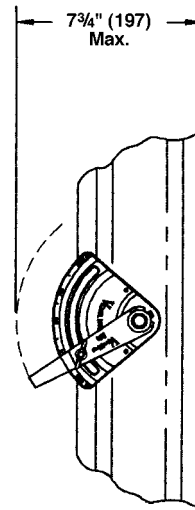
Dimensions shown in parentheses () indicate millimeters.

HAND QUADRANTS
HQR050, HQS375, HDHQ050, HDHQ100



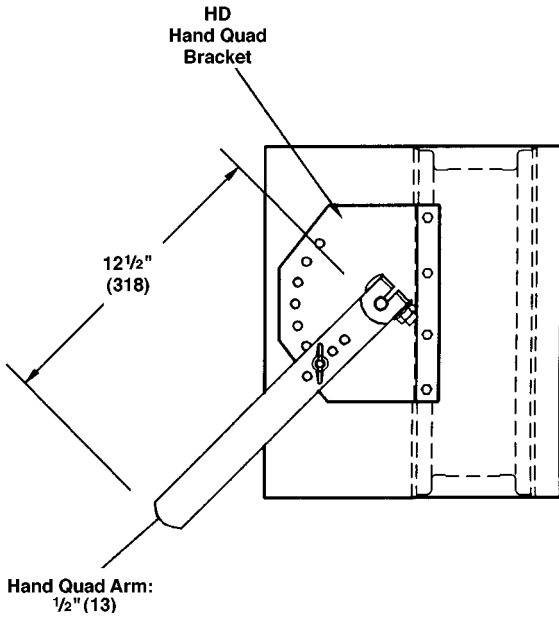
HQR050

For one section 12 1/2 sq. ft. and under w/blade seals
 or one section 25 sq. ft. and under w/o blade seals

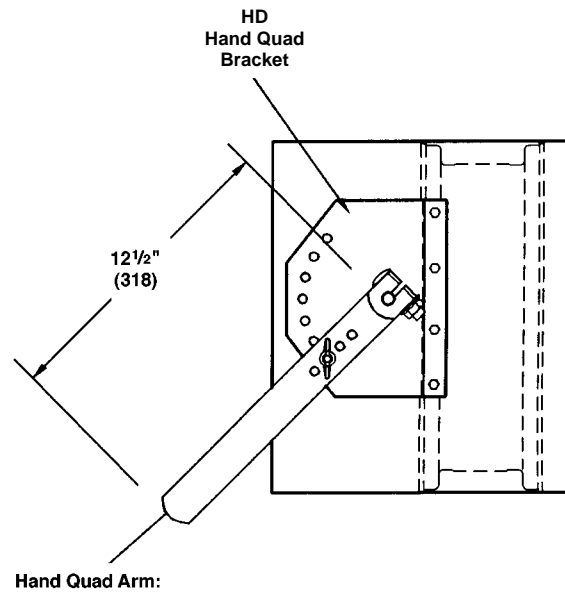


HQS375

For manual balancing dampers only
 one per section required



HDHQ050



HDHQ100

Notes:

1. For two section wide multi-section assemblies 12 1/2 sq. ft. and under with blade seals and/or jamb seals; or 25 sq. ft. without blade and/or jamb seals.

Notes:

1. For multi-section assemblies more than two sections wide regardless of square footage or seal package.
2. Two section wide assemblies over 12 1/2 sq. ft. with blade seals and/or jamb seals; or over 25 sq. ft. without blade seals and/or jamb seals.

ALL HAND QUADS FOR COMMERCIAL DAMPERS ONLY

Dimensions shown in parentheses () indicate millimeters.