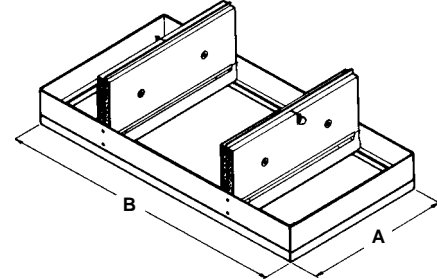


CFD4W CEILING FIRE DAMPER Warnock Hersey Classified Radiation Dampers

APPLICATION

The CFD4W is a Warnock Hersey classified ceiling fire (radiation) damper. It provides protection to penetrations of up to 576 sq. in. (maximum opening size) through fire rated ceilings with fire resistance ratings of 3 hours or less.

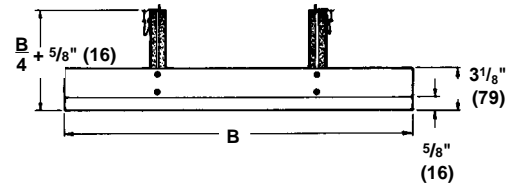


STANDARD CONSTRUCTION

FRAME

20 gauge (.9) galvanized steel. Frame depths are as shown in following chart.

| FRAME STYLE | B DIMENSION | FRAME DEPTH |
|-------------|----------------------------|--|
| Standard | All sizes | 3 ¹ / ₈ " (79) |
| Extended | 14" to 20" (356 to 508) | 6 ⁵ / ₁₆ " (160) |
| | 21" to 24" (533 to 610) | 8 ¹ / ₈ " (203) |



BLADE

22 gauge (.8) galvanized steel, with UL Classified insulation as required.

FUSIBLE LINK

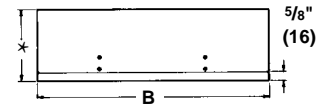
165°F (74°C) is standard. 212°F (100°C) and 285°F (141°C) is available at no additional cost.

MINIMUM SIZE (Inside Dimension)

14"w x 24"h (356 x 607) or 24"w x 14"h (607 x 356).
For smaller sizes see CFD2W and 3W

MAXIMUM UL CLASSIFIED SIZE (Inside Dimension)

576 sq. in. (3716). Maximum A and B dimension 24" (610).



Extended Frame



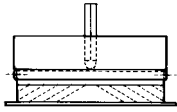
OPTIONS

- VA Volume Adjust to balance airflow.

Dimensions shown in parentheses () indicate millimeters.

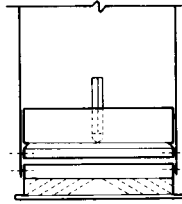
ORDERING INFORMATION

HOW TO ORDER



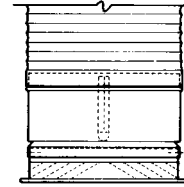
Ductless Installation

Order "actual size" with **standard** frame. Damper installs over diffuser neck.



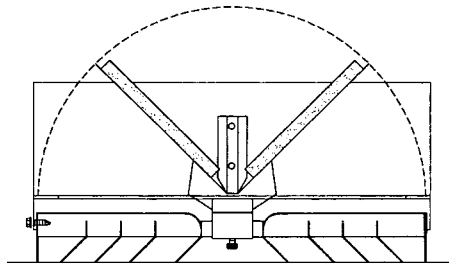
Steel Duct Installation

Order "deduct 1/4" (6)" with **standard** frame. Damper installs inside duct.



Flex Duct Installation

Order "actual size" with **extended** frame. Damper installs over diffuser neck; flex duct installs over damper.



UL Listed Fusible Volume Adjustment Option

The standard, fusible link can be replaced with a simple mechanism that permits adjustment of damper blades to balance airflow. A standard $\frac{3}{16}$ " (5) hex (Allen) wrench is used for adjustment. In fire conditions, the damper closes regardless of volume setting. This feature must be added to the damper at fabrication. The CFD4W requires 2 volume adjustments. 165°F or 212°F (74°C or 100°C) (specify temperature) fusible volume adjustment options are available. **Caution: Volume Adjust hangs below a rectangular damper $1\frac{1}{8}$ " (29).**

RUSKIN[®]

3900 Dr. Greaves Rd.
Kansas City, MO 64030
(816) 761-7476
FAX (816) 765-8955
www.ruskin.com