

SSEGH EGGCRATE BLADE SUNSHADE HORIZONTALLY MOUNTED

STANDARD CONSTRUCTION

EGGCRATE BLADE INFILL

6063T5 extruded aluminum with .125" (3.2) nominal thickness.
Grid can be 2" to 12" (51 to 305) x 2" to 12" (51 x 305) x 1" to 6" (25 to 152) deep as specified.

OUTRIGGERS

Flat, non-tapered aluminum bar. Specify depth. Other outrigger designs are available at additional cost.

FASCIA

Available at additional cost.

INSTALLATION

Installation brackets and hardware by others.

CONSTRUCTION

All welded.

FINISH

Mill.

MINIMUM SIZE

12"w x 12"h (305 x 305).

APPROXIMATE SHIPPING WEIGHT

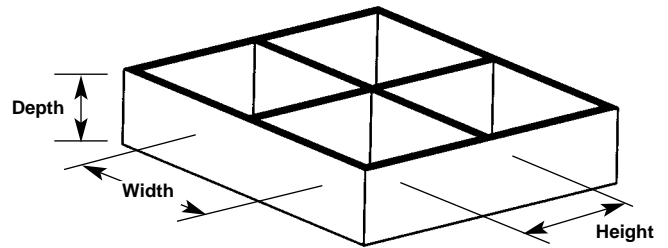
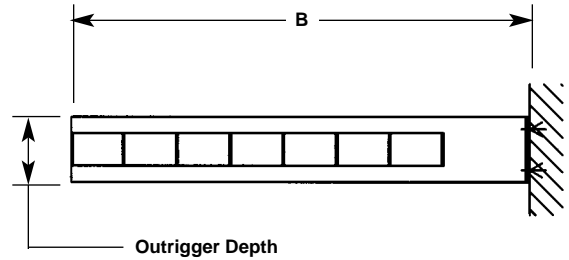
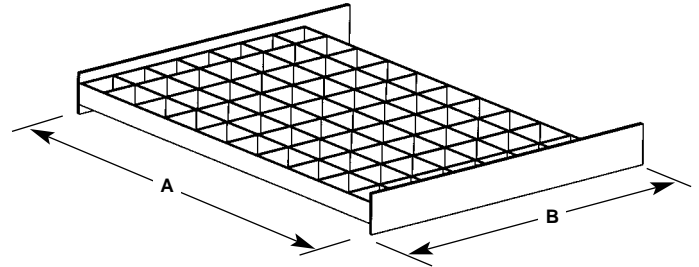
Varies depending on grid size.

MAXIMUM SINGLE SECTION SIZE

Consult factory.

OVERALL

Single sections may be joined together in the field for unlimited overall size. Field assembly and supporting structure are by others.



Eggcrate Grid Dimensions

VARIATIONS

- Alternate blade spacing.
- Alternate blade installation angles.
- Outrigger Options: tapered bar, channel and tube.
- Fascia Options: channel, round and bullnose shapes.
- Installation brackets and hardware are available.
- Selection of finishes: baked enamel (modified fluoropolymer), Kynar, Pearledize 50 & 70, prime coat, clear and color anodize. (Some variation in anodize color consistency is possible.)

All variations are available at additional cost. Consult Ruskin for other special requirements.

Dimensions shown in parentheses () indicate millimeters.

TAG	QTY.	SIZE		EGGCRATE GRID			OUTRIGGER DEPTH	VARIATIONS
		A - WIDE	B - HIGH	WIDE	HEIGHT	DEPTH		
PROJECT				LOCATION				
ARCH./ENGR.				CONTRACTOR				
REPRESENTATIVE				DATE				