

MP2781, MP2781A, MP2814, MP2814A, MP2781-SQ, MP2781A-SQ, MP2814-SQ AND MP2814A-SQ DAMPER ACTUATORS

APPLICATION

The MP2781, MP2781-SQ, MP2781A, MP2781A-SQ, MP2814, MP2814-SQ, MP2814A and MP2814A-SQ are "stall" type actuators. The MP2781, MP2781A, MP2814 and MP2814A are for use on Ruskin back draft dampers while the MP2781-SQ, MP2781A-SQ, MP2814-SQ and MP2814A-SQ are replacement actuators for "older" Ruskin fire/smoke and smoke dampers manufactured prior to 1990. The main difference between the two actuators is the "SQ" version was manufactured with a $\frac{3}{16}$ " (4) square shaft.

SPECIFICATIONS

MOTOR TYPE

Unidirectional shaded pole.

ELECTRICAL REQUIREMENTS

MP2781(SQ), MP2814(SQ)

Voltage 115 volts a.c. 60 hz.

Current: .24 amps running, .27 amps holding

MP2781A(SQ), MP2814A(SQ)

Voltage 24 volts a.c. 60 hz.

Current: 1.15 amps running, 1.5 amps holding

RATED TORQUE

10 in. lbs.

SPEED

1.8 RPM.

SHAFT ROTATION

MP2781(SQ), MP2814(SQ) – Counter clockwise.

MP2781A(SQ), MP2814A(SQ) – Clockwise.

OPERATING TEMPERATURES

Ambient operation to 125°F. Qualified for 30 minutes of operation at 250°F for use with UL classified smoke dampers.

NOTES:

1. External spring required. Actuator is not equipped with its own return spring.
2. Use flex conduit only and maintain 1" (25) clearance around actuator.
3. Dimensions shown in parentheses () indicate millimeters.

FEATURES

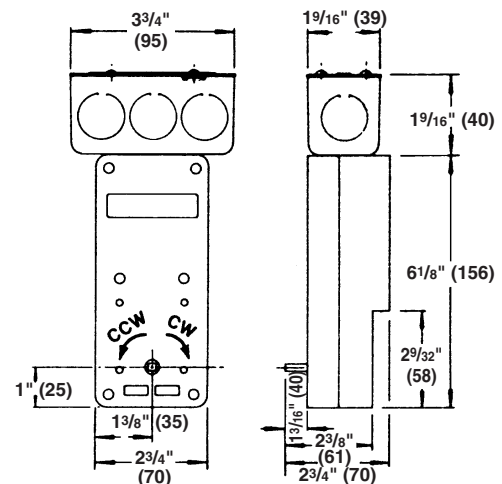
- Die cast aluminum enclosure
- Semi-oiless bearings requiring no maintenance.
- Precision, machine-cut gears.

These actuators are manufactured by:

Multi Products Company
2052 Grove Avenue
Racine, Wisconsin 53405



DIMENSIONS



RUSKIN[®]

3900 Dr. Greaves Rd.
Kansas City, MO 64030
(816) 761-7476
FAX (816) 765-8955
www.ruskin.com