

ADC24-HP AND ADH24-HP ACCESS DOORS FOR HIGH PRESSURE APPLICATIONS

APPLICATION

Ruskin access doors for high pressure offer quick, easy and economical installation wherever high pressure duct access is needed. Manual locks assure tight door closure.

STANDARD CONSTRUCTION

FRAME

22 gage (.8) galvanized steel with seal.

DOOR

24 gage (.7) galvanized steel.

ADC24-HP – Removable, double skin.

ADH24-HP – Hinged, double skin.

HINGE (ADH Models Only)

Continuous piano type.

LOCKS

ADH24-HP – Doors under 16" (406) have three locks, doors

16" (406) and over have six locks.

ADC24-HP – Doors under 16" (406) have four locks, doors 16" (406) and over have eight locks.

MAXIMUM STATIC PRESSURE

Ruskin high pressure access doors have been tested to 10" w.g.

SEALS

Foam gasket.

INSULATION

1" (25) fiberglass.

MINIMUM SIZE

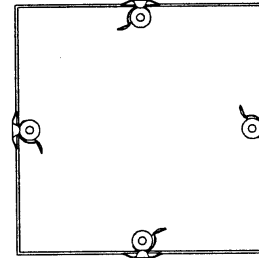
6"w x 6"h (152 x 152).

MAXIMUM SIZE

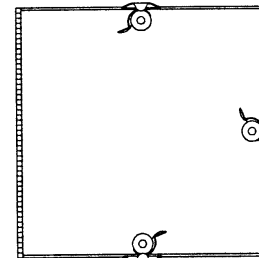
24"w x 24"h (610 x 610).

INSTALLATION

Cut hole 1¹/₈" (28) smaller than door size.



MODEL ADC24-HP
with cam latches



MODEL ADH24-HP
with hinge and cams

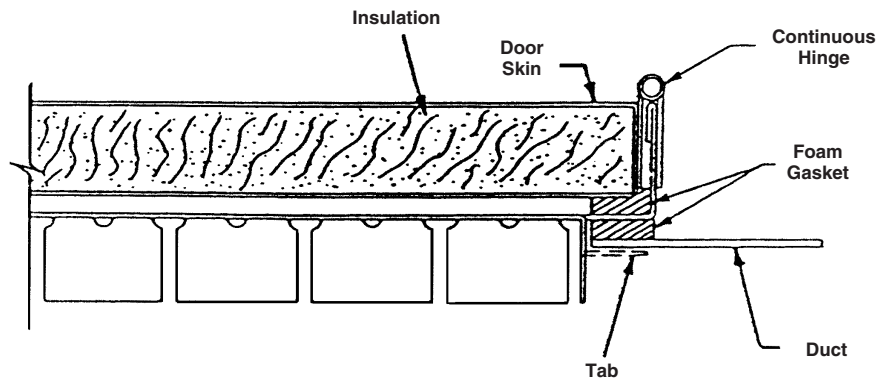
VARIATIONS

- 20 gage (.9) door panels
- Ventlock 100 latches
- Stainless steel construction
- Bronze hinge pins
- Brass cams
- Security chain
- Intermediate sizes between 6" x 6" (152 x 152) and 24" x 24" (610 x 610)

NOTES

1. Dimensions shown in parenthesis () indicate millimeters.
2. Access doors furnished actual size.
3. For doors larger than 24" x 24" (610 x 610) see GPAD.

INSTALLATION



DOOR DETAIL