

**ELF6375DFL DRAINABLE STATIONARY LOUVER  
EXTRUDED ALUMINUM LOUVER  
UL LISTED FOR 50 PSF WINDLOAD  
FLORIDA PRODUCT APPROVAL # FL6068**

**STANDARD CONSTRUCTION**

**FRAME**

6" (152) deep, 6063T5 extruded aluminum. .081"(2.1) nominal wall thickness. Downspouts and caulking surfaces provided.

**BLADES**

6063T5 extruded aluminum. .081" (2.1) nominal wall thickness. Drainable blades are positioned at 37 1/2° angle and spaced approximately 5 29/32" (150) center to center.

**SCREEN**

5/8" x .040" (16x1) expanded, flattened aluminum bird screen in removable frame. Screen adds approximately 1/2" (13) to louver depth.

**FINISH**

Mill.

**WINDLOAD**

±50 psf (2.39 kPA)

**MINIMUM SIZE**

12"w x 12"h (305x305).

**APPROXIMATE SHIPPING WEIGHT**

5 lbs./ ft.<sup>2</sup> (24.4 kg per m<sup>2</sup>)

**MAXIMUM SIZE**

Maximum single ship section size 90"w x 120"h (2286x3048) or 120"w x 90"h (3048x2286). Maximum field assembled size of ship sections is 180"w x 120"h (4572x3048) or 240"w x 90"h (6096x2286). A maximum of two sections may be joined side by side. Single section heights only; **sections cannot be stacked in height.** Openings taller than the maximum louver height will need to be divided into multiple openings with suitable structural members. Structural members are not designed or provided by Ruskin.

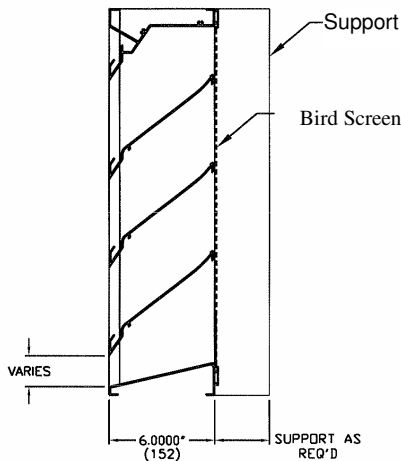
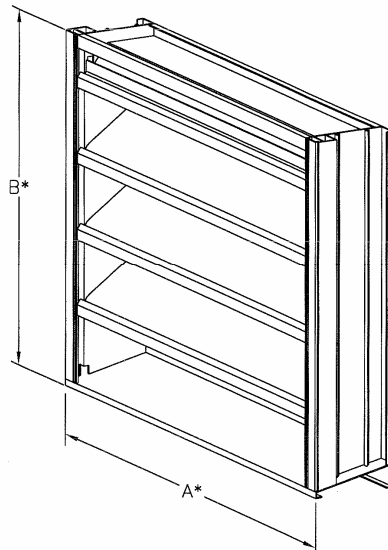
**INSTALLATION**

Must be installed per approved installation method. Refer to the related Installation Instruction sheet for details.

**SUPPORTS**

Factory installed on louvers over 60" wide. Depth varies from 3" (76) to 6" (152) depending on louver size (consult Ruskin for more information).

Consult Ruskin for additional information.



**UL CLASSIFIED as a Wind Resistive Building Component in accordance with ASTM E330-02 for ±50 psf (2.39 kPA) windload. UL File No. R22052.**

**FEATURES**

- Meets 2004 Florida Building Code TAS202-94 requirements ±50 psf windload
- 57% Free Area (48"w x 48" h) [1219x1219].
- Published performance ratings based on testing in accordance with AMCA Publication 511.
- High performance frame system with drainable head collects and removes water to provide excellent water penetrations performance.
- Drain gutter in each blade minimizes water cascade between blades.
- Architecturally styled hidden mullions allowing continuous line appearance up to 120" (3048).
- All aluminum construction for low maintenance and high resistance to corrosion.
- All welded construction.

**VARIATIONS**

Variations to the basic design of the louver are available at additional cost. They include:

- Extended sill.
- Front or rear security bars.
- Filter racks.
- A variety of bird and insect screens.
- Selection of finishes: prime coat, baked enamel (modified fluoropolymer), epoxy, Pearledize 50 & 70, Kynar, clear & color anodize. (Some variation in anodize color consistency is possible.)

Consult Ruskin for other special requirements.

Dimensions in inches, parentheses ( ) indicate millimeters.

\*Units furnished 1/4" (6) smaller than given opening dimensions.

TAG	QTY	SIZE		FRAME	VARIATIONS
		A* - WIDE	B* - HIGH		
<b>PROJECT</b>			<b>LOCATION</b>		
<b>ARCH./ENGR.</b>			<b>CONTRACTOR</b>		
<b>REPRESENTATIVE</b>			<b>DATE</b>		

## SUGGESTED SPECIFICATION

Furnish and install louvers as hereinafter specified where shown on plans or as described in schedules. Louver shall be UL Classified for wind resistant building components in accordance with ASTM E330-02 for  $\pm 50$  psf windload. Louvers shall be stationary drainable type with drain gutters in each blade and downspouts in jambs and mullions. Louvers shall have a minimum of 57% free area based on a 48" wide x 48" high (1219x1219) size. Stationary drainable blades shall be contained within a 6" (152) frame. Louver components (heads, jambs, sills, blades, & mullions) shall be factory assembled by the louver manufacturer. Louver sizes too large for shipping shall be built up by the contractor from factory assembled louver sections to provide overall sizes required. Louver design shall limit span between visible mullions to 10 feet (3) and shall incorporate structural supports required to withstand a windload of 50 lbs. per sq. ft. (.96kPa).

Louvers shall be Ruskin Model ELF6375DFL extruded 6063T5 aluminum alloy construction as follows:

- Frame: 6" (152) deep, .081" (2.1) wall thickness.
- Blades: .081" (2.1) wall thickness. Drainable blades are positioned at 37 1/2° angle and spaced approximately 5 29/32" (150) center to center.
- Screen 5/8" x .040" (16x1) expanded, flattened aluminum bird screen in removable frame
- Finish: Select finish specification from Ruskin Finishes Brochure.

Published louver performance data bearing: a) AMCA Certified Ratings Seal for Air Performance & Water Penetration and b) UL classification information and file number must be submitted for approval prior to fabrication and must demonstrate pressure drop and water penetration equal to or less than the Ruskin model specified.

## PERFORMANCE DATA

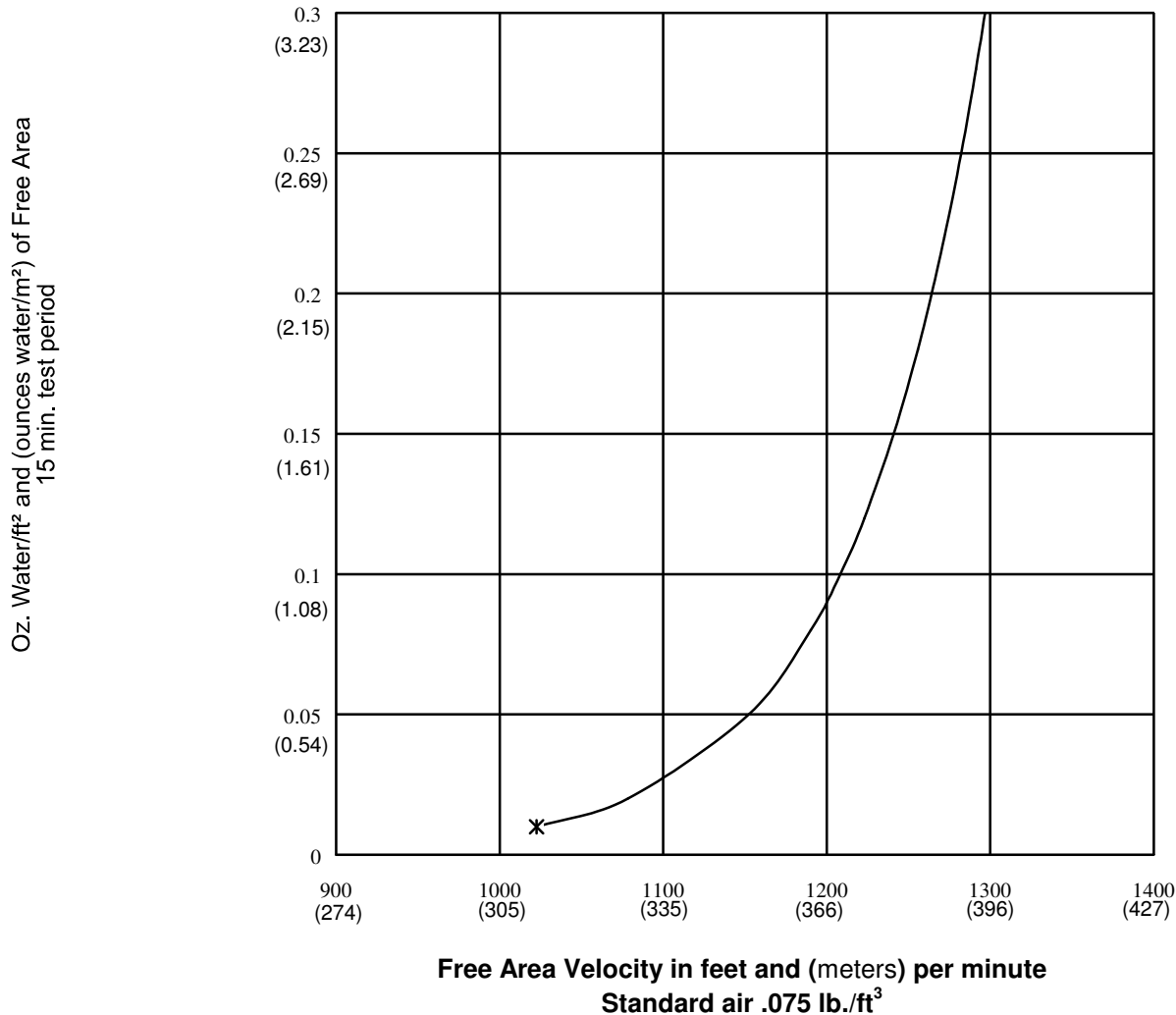
AMCA Standard 500-L provides a reasonable basis for testing and rating louvers. Testing to AMCA Standard 500-L is performed under a certain set of laboratory conditions. This does not guarantee that other conditions will not occur in the actual environment where louvers must operate.

The louver system should be designed with a reasonable safety factor for louver performance. To ensure protection from water carryover, design with a performance level somewhat below maximum desired pressure drop and .01 oz./sq. ft. of water penetration.

### WATER PENETRATION

Test size 48" x 48" (1219x1219)

Beginning point of water penetration at .01 oz./sq. ft. is 1023 fpm (312 m/min.)



## FREE AREA GUIDE

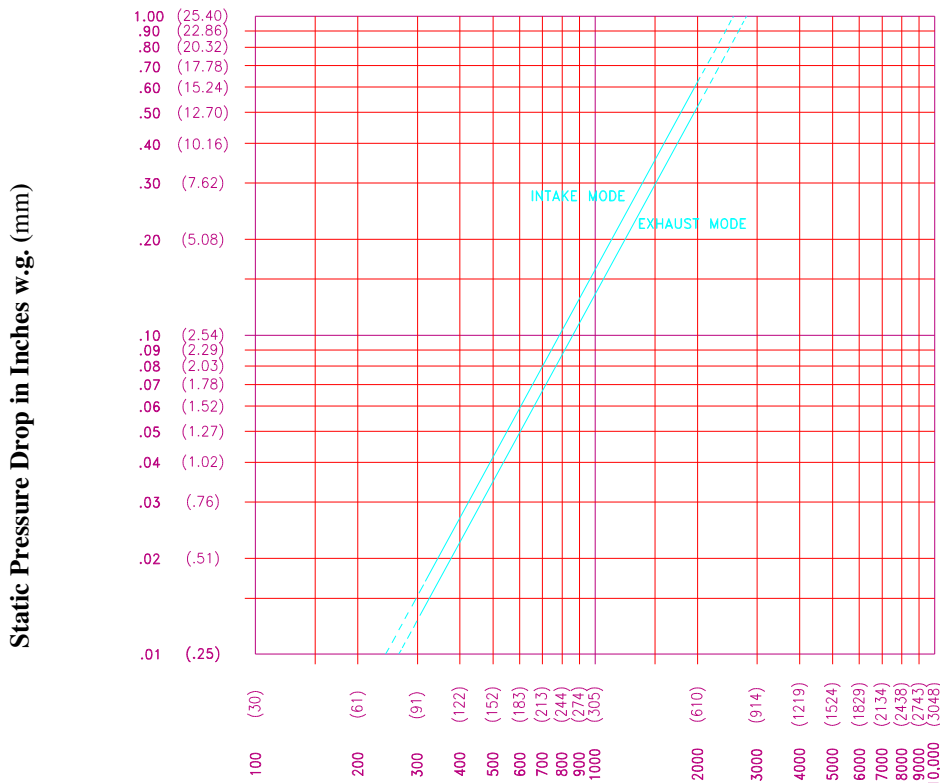
Free Area Guide shows free area in ft<sup>2</sup> and m<sup>2</sup> for various sizes of ELF6375DFL.  
Width - Inches and Meters

Height - Inches and Meters

	12	18	24	30	36	42	48	54	60	66	72	78	84	90	96	102	108	114	120
	0.30	0.46	0.61	0.76	0.91	1.07	1.22	1.37	1.52	1.68	1.83	1.98	2.13	2.29	2.44	2.59	2.74	2.90	3.05
12	0.31	0.49	0.67	0.86	1.04	1.22	1.41	1.59	1.77	1.96	2.14	2.32	2.51	2.69	2.88	3.06	3.25	3.43	3.61
18	0.58	0.93	1.28	1.63	1.98	2.32	2.68	3.03	3.37	3.73	4.08	4.42	4.77	5.13	5.48	5.82	6.18	6.52	6.87
24	0.86	1.38	1.89	2.40	2.92	3.43	3.96	4.47	4.98	5.50	6.02	6.53	7.05	7.57	8.09	8.60	9.12	9.63	10.15
30	1.14	1.82	2.50	3.18	3.87	4.54	5.24	5.92	6.59	7.28	7.97	8.64	9.33	10.01	10.70	11.37	12.06	12.74	13.42
36	1.41	2.26	3.11	3.95	4.80	5.64	6.52	7.35	8.18	9.04	9.89	10.73	11.58	12.44	13.29	14.13	14.98	15.82	16.67
42	1.69	2.70	3.72	4.72	5.75	6.74	7.79	8.79	9.79	10.81	11.83	12.83	13.86	14.88	15.89	16.90	17.92	18.92	19.94
48	1.97	3.15	4.33	5.50	6.69	7.86	9.08	10.24	11.40	12.59	13.78	14.95	16.14	17.33	18.51	19.68	20.87	22.04	23.23
54	2.24	3.59	4.94	6.27	7.63	8.96	10.35	11.67	13.00	14.35	15.71	17.04	18.40	19.75	21.10	22.44	23.79	25.12	26.48
60	2.52	4.03	5.55	7.05	8.57	10.06	11.62	13.12	14.60	16.13	17.65	19.14	20.67	22.19	23.71	25.21	26.73	28.22	29.75
66	2.80	4.47	6.16	7.82	9.51	11.17	12.90	14.56	16.20	17.90	19.59	21.24	22.94	24.63	26.31	27.98	29.67	31.32	33.01
72	3.08	4.92	6.76	8.59	10.45	12.27	14.18	16.00	17.81	19.67	21.53	23.35	25.21	27.07	28.91	30.74	32.60	34.42	36.28
78	3.35	5.36	7.37	9.37	11.40	13.38	15.45	17.44	19.41	21.44	23.47	25.45	27.48	29.51	31.52	33.51	35.54	37.52	39.55
84	3.63	5.80	7.98	10.14	12.34	14.48	16.73	18.88	21.02	23.21	25.41	27.55	29.75	31.94	34.12	36.28	38.48	40.62	42.82
90	3.91	6.25	8.59	10.92	13.28	15.59	18.01	20.32	22.62	24.98	27.35	29.65	32.02	34.38	36.73	39.05	41.41	43.72	46.09

## PRESSURE DROP

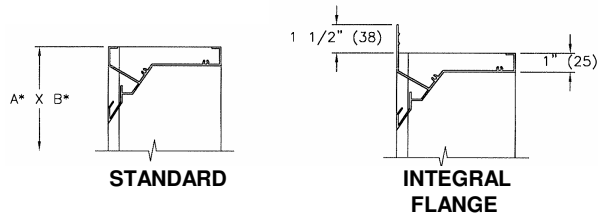
Test size 48" wide x 48" high (1219 x 1219)  
Ratings do not include the effect of a bird screen.



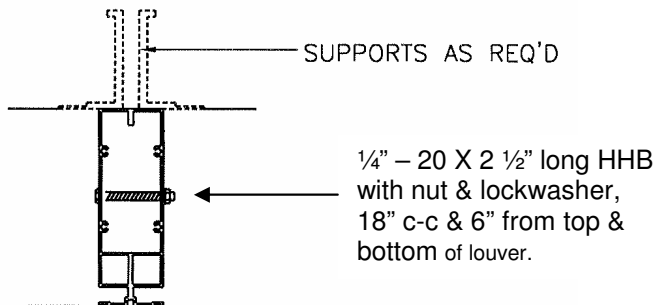
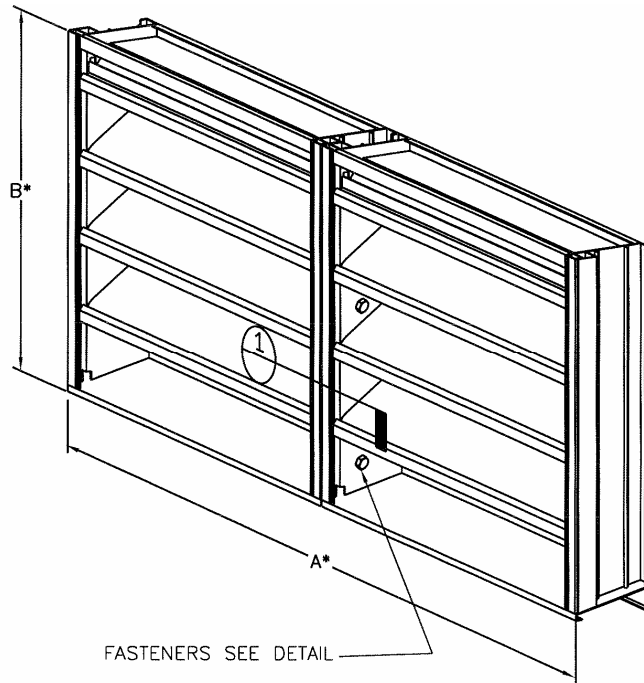
Ruskin Company certifies that the ELF6375DFL louvers shown herein are licensed to bear the AMCA Seal. The ratings shown are based on tests and procedures performed in accordance with AMCA Publication 511 and comply with the requirements of the AMCA Certified Ratings Program. The AMCA Certified Ratings Seal applies to air performance ratings and water penetration ratings only.

Air Velocity in feet (meters) per minute through Free Area

## FRAME CONSTRUCTION



## 2 x 1 ASSEMBLY FIELD SPLICE DETAIL



### 1. SPLICE DETAIL PLAN

**RUSKIN**<sup>®</sup>

3900 Dr. Greaves Rd.  
Kansas City, MO 64030  
(816) 761-7476  
FAX (816) 765-8955  
www.ruskin.com