

ELBD813 AUTOMATIC EXHAUST DUAL COMBINATION LOUVER DAMPER EXTRUDED ALUMINUM

STANDARD CONSTRUCTION

FRAME

ELBD813 - 4" (102) deep, 6063T5 extruded aluminum with .081" (2.1) nominal wall thickness. Caulking surfaces provided.

BLADES

Louver blades: 6063T5 extruded aluminum, .081" (2.1) nominal wall thickness. J-style blades (formerly "weather-proof") are positioned at 45° angle. Blade spacing is approximately 5" (127) center to center.

Backdraft damper blades: .050" (1.3) extruded aluminum.

SCREEN

5/8" x .040" (16 x 1) expanded, flattened aluminum bird screen in removable frame. Screen adds approximately 1/2" (13) to louver depth.

SEALS

Extruded vinyl blade edge seals on rear adjustable blades to provide quiet operation.

FINISH

Mill.

MINIMUM SIZE

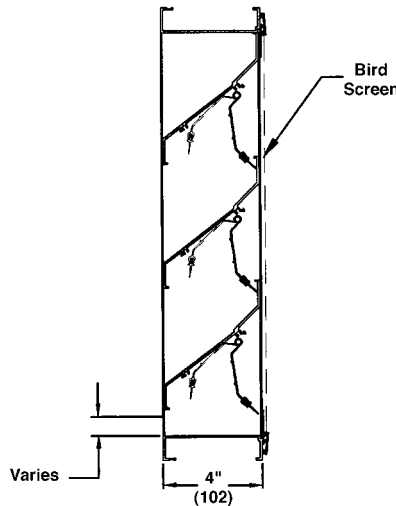
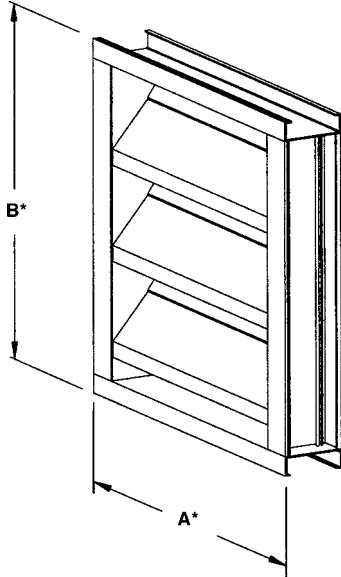
12"w x 12"h (305 x 305).

APPROXIMATE SHIPPING WEIGHT

6 lbs. per sq. ft. (29.3 kg/m²).

MAXIMUM FACTORY ASSEMBLY SIZE

Shall be 48"w x 96"h, 32 sq. ft. (1219 x 2438, 3m²). Louvers larger than the maximum factory assembly size will require field assembly of smaller sections.



FEATURES

The ELBD813 offers:

- All aluminum construction for low maintenance and high resistance to corrosion.
- Approximately 40% free area with backdraft damper blades full open, based on a 48" x 48" (1219 x 1219) size.
- Operable blades start to open at .01" w.g. static pressure and are fully open at .25" w.g. static pressure.

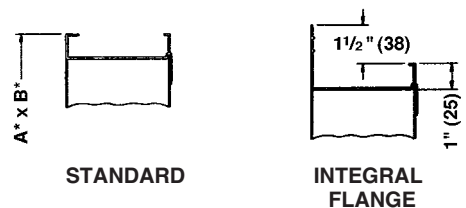
VARIATIONS

Variations to the basic design of this louver are available at additional cost. They include:

- Extended sill.
- Front or rear security bars.
- Filter racks
- Installation angles.
- A variety of bird and insect screens.
- Selection of finishes: prime coat, baked enamel (modified fluoropolymer), epoxy, Pearledize 50 & 70, Kynar, clear and color anodize. (Some variation in anodize color consistency is possible.)

Consult Ruskin for other special requirements.

FRAME CONSTRUCTION

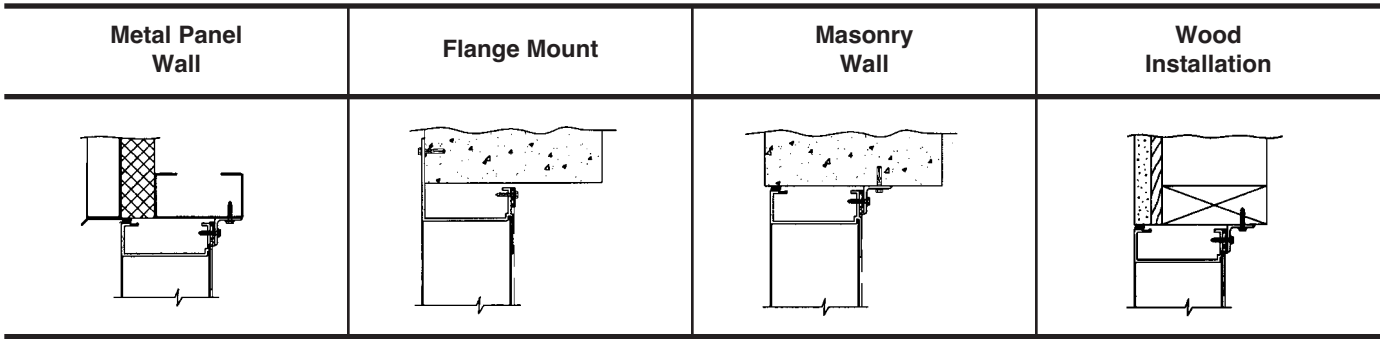


Dimensions in inches, parenthesis () indicate millimeters.

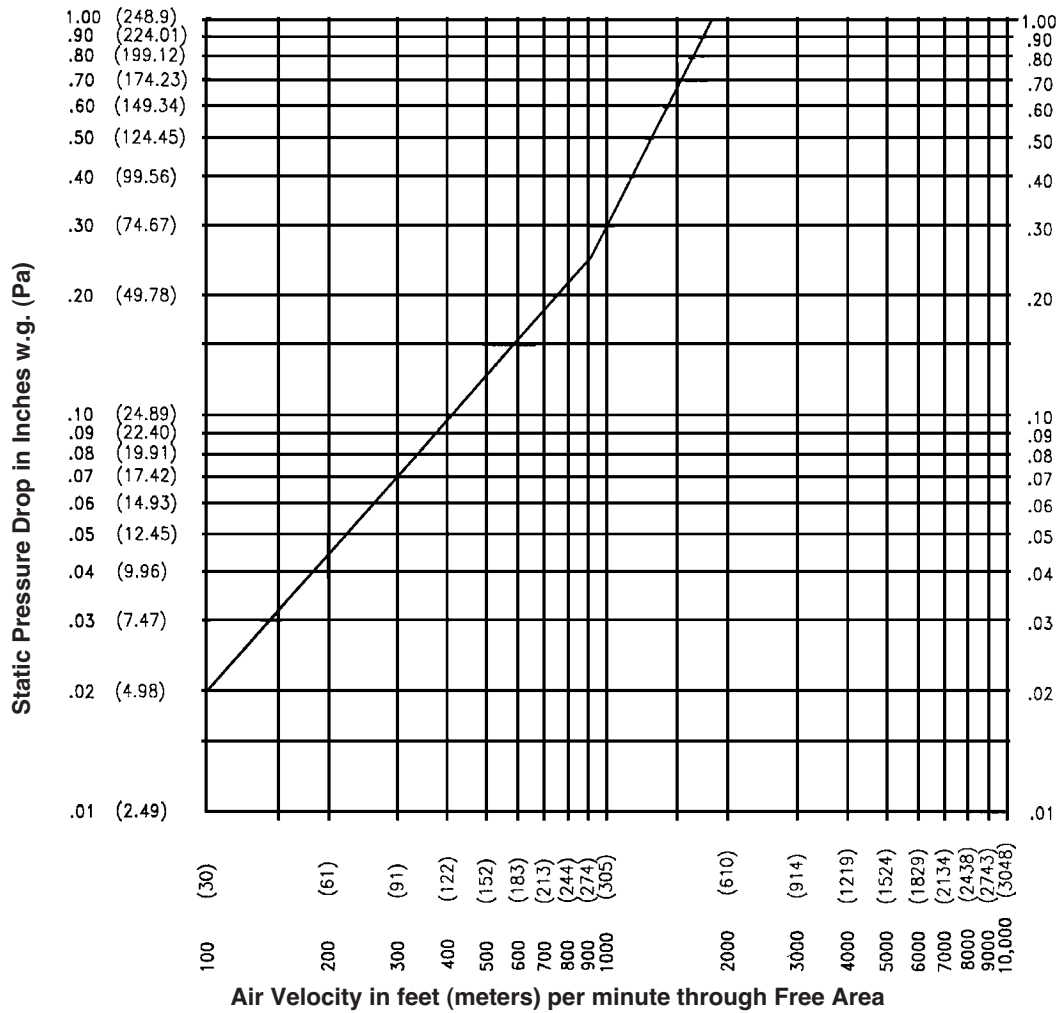
*Units furnished 1/4" (6) smaller than given opening dimensions.

TAG	QTY.	SIZE		FRAME	VARIATIONS
		A*-WIDE	B*-HIGH		
PROJECT			LOCATION		
ARCH./ENGR.			CONTRACTOR		
REPRESENTATIVE			DATE		

TYPICAL INSTALLATION DETAILS



PRESSURE DROP



SUGGESTED SPECIFICATION

Furnish and install louvers as hereinafter specified where shown on plans or as described in schedules. Louvers shall be automatic exhaust dual combination louver damper. Stationary blades with extruded vinyl seals and automatic backdraft blades shall be entirely contained within a 4" (102) frame. Louver components (heads, jambs, sills, blades & mullions) shall be factory assembled by the louver manufacturer. Louver sizes too large for shipping shall be built up by the contractor from factory assembled louver sections to provide overall sizes required. Louver design shall limit single section blade span to 48" (1219) and shall incorporate such other structural supports required to withstand a wind load of 20 lbs. per sq. ft. (.96kPa).

Louvers shall be Ruskin Model ELBD813 construction as follows:

- Frame: .081" (2.1) extruded aluminum.
- Blades: Stationary blades: .081" (2.1) wall thickness.
Automatic backdraft blades: .050" (1.3) extruded aluminum.
- Screen: 5/8" x .040" (16 x 1) expanded, flattened aluminum bird screen in removable frame.
- Finish: Select finish specification from Ruskin/Valspar Finishes Brochure.

Published louver performance data derived from testing in accordance with AMCA 500 must be submitted for approval prior to fabrication and must demonstrate pressure drop equal to or less than the Ruskin model specified.