

## CFDR7-T ROUND CEILING FIRE DAMPERS UL Classified Radiation Dampers for Wood Truss Construction

### APPLICATION

The CFDR7-T is a true round ceiling fire damper to be used with round ceiling diffusers and grilles. The CFDR7-T is UL Classified Ceiling Fire Damper that is UL listed for installation in wood truss floor/ceiling and roof/ceiling designs L528, L558, L574, L586, P533, P545 and P548. The CFDR7-T does not require additional damper insulation to meet UL approved installation requirements. The CFDR7-T is also UL approved for installation with duct connection below the ceiling membrane penetration.

#### Ceiling Diffusers/Grilles

The CFDR7-T is designed to allow up to 2<sup>3</sup>/<sub>8</sub>" (61) grille/diffuser extension into the damper. Steel or non-ferrous grille/diffusers may be used. Non-ferrous grille/diffusers require a plaster flange between the grille/diffuser and the ceiling membrane.

Model CFDR7-T meets the requirements for fire/radiation dampers established by:

- **National Fire Protection Association** NFPA Standards 80, 90A, 92A, 92B, and 101.
- **ICC International Building Codes**
- **CSFM California State Fire Marshal**  
Listing (3225-0245:0123)

### STANDARD CONSTRUCTION

#### FRAME

20 gauge (.9) galvanized steel.

#### BLADE

20 gauge (.9) galvanized steel, with UL classified insulation as required.

#### FUSIBLE LINK

165°F (74°C) is standard. 212°F (100°C) is available at no additional cost.

#### MINIMUM SIZE (Damper Sizes)

5" dia. (127).

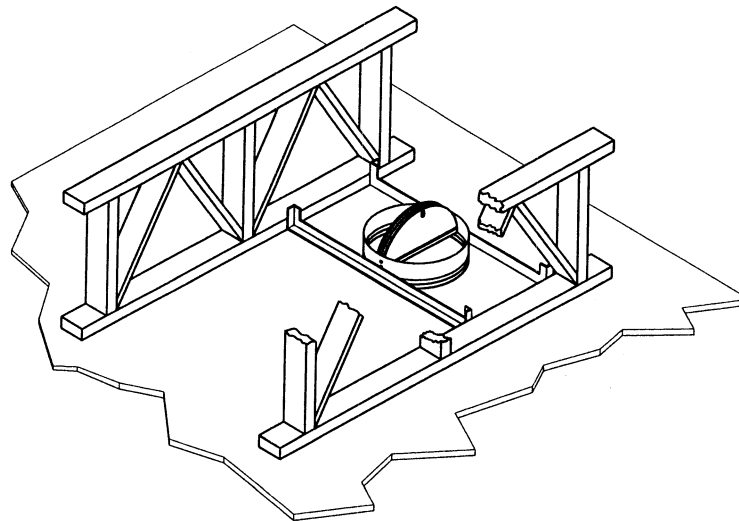
#### MAXIMUM SIZE (Damper Sizes)

18" dia. (457).

Dimensions shown in parentheses ( ) indicate millimeters.

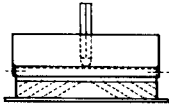
#### UL CLASSIFIED

UL555C Listing R8039



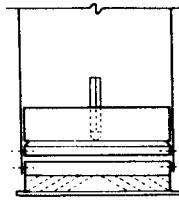
# CFDR7-T CEILING FIRE DAMPERS

## HOW TO ORDER



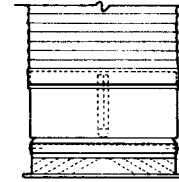
### Ductless Installation

Order "actual size" with standard frame. Damper installs over diffuser neck.



### Steel Duct Installation

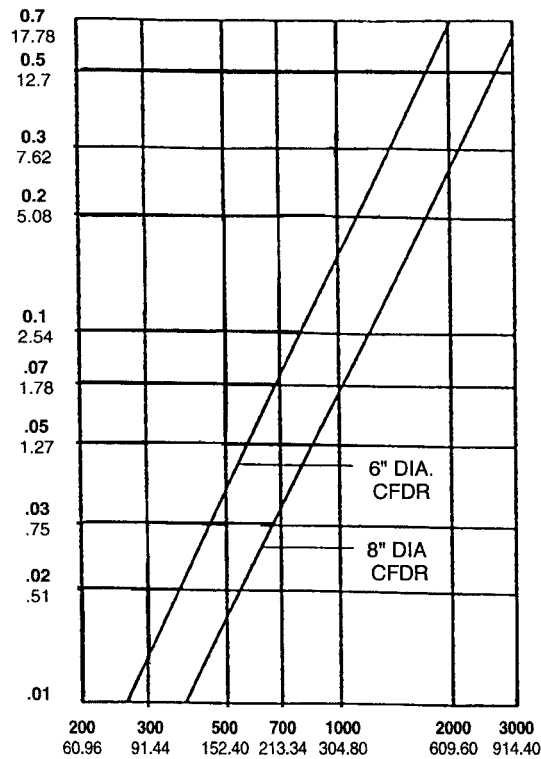
Order "deduct 1/4" (6) with standard frame. Damper installs inside duct.



### Flex Duct Installation

Order "actual size" with **extended** frame. Damper installs over diffuser neck, flex duct installs over damper.

Pressure Drop – Damper Open (Size as noted)



Air Velocity in FEET and METERS per minute through FACE AREA.  
Tested per AMCA Std. 500, Fig. 5.2, ductwork upstream.

**RUSKIN**®

3900 Dr. Greaves Rd.  
Kansas City, MO 64030  
(816) 761-7476  
FAX (816) 765-8955  
www.ruskin.com