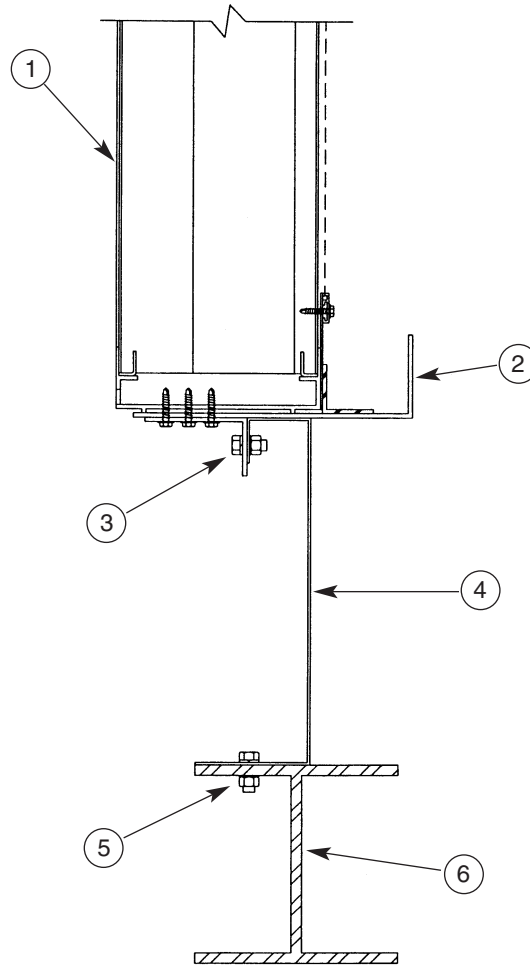


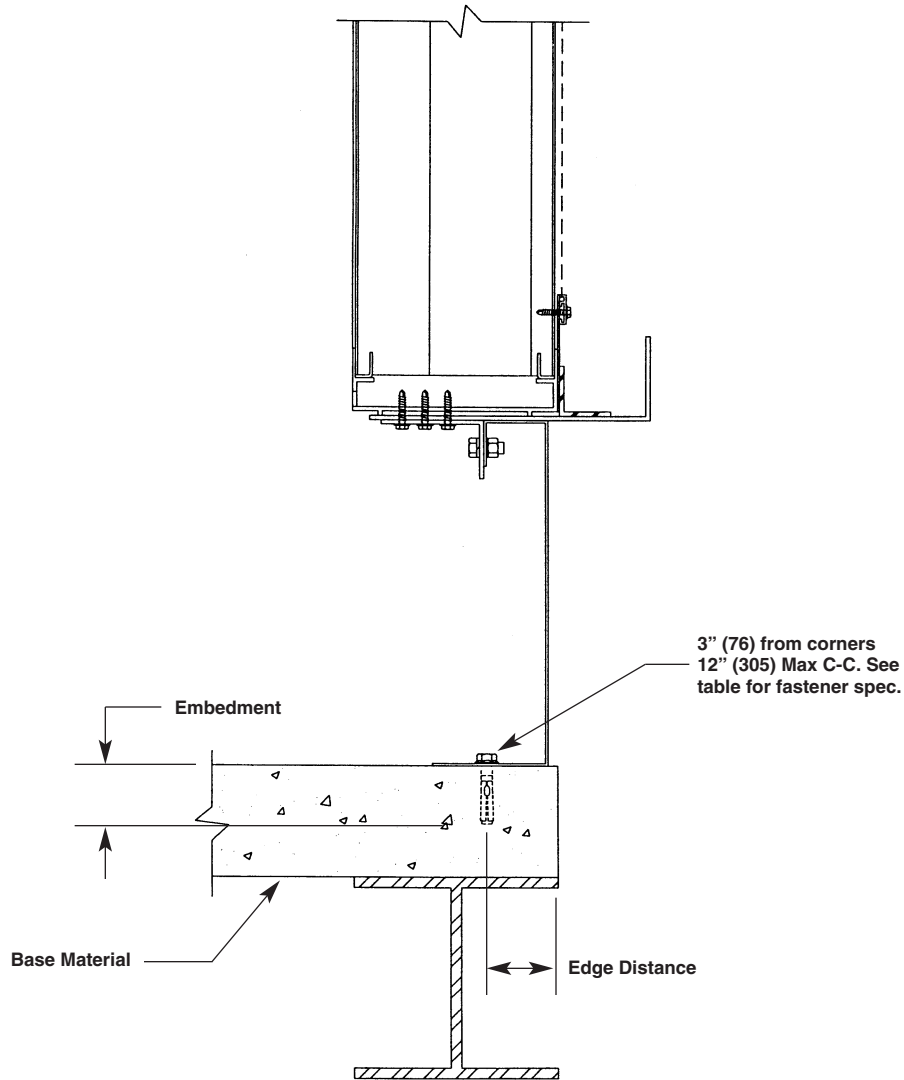
INSTALLATION DETAILS
PHB6625D BOXED CORNER PENTHOUSE
MIAMI-DADE COUNTY, FLORIDA NOTICE OF ACCEPTANCE #08-1003.05 (EXPIRES 11/20/13)



PHB6625D INSTALLATION DETAIL

1. Penthouse louvers.
2. Extended sill base.
3. 3/8" x 1 1/2" HHB w/washer, lock washer, and hex nut mounted 12" on center 3" from ends. Installer to attach through curb and sill support.
4. Steel curb provided by others: curb top width 2" + 0"-1/8", curb base width 3" - 4" (24" max height; min. 14 ga. steel).
5. Fastener provided by others (for other installation methods see Detail 2 and chart).
6. Structure provided by others.

CURB ANCHOR DETAILS - DETAIL 2



Base Material	Fastener Type	Special Requirements
Timber Frame	5/16" Dia. Lag Screw	3" Min. Embedment, 1 1/2" Edge Distance
Steel Decking	3/8" Dia. Self-Tapping Screw	10 ga. Min. Thickness for Base Material
Concrete	3/8" Dia. Hilti Kwik Bolt II Expansion Anchor or Equal	2 1/2" Min. Embedment and Edge Distance, 2,000 psi Min. Concrete

RUSKIN[®]

3900 Dr. Greaves Rd.
Kansas City, MO 64030
(816) 761-7476
FAX (816) 765-8955
www.ruskin.com