

ELF811SH STATIONARY LOUVER EXTRUDED ALUMINUM

STANDARD CONSTRUCTION

FRAME

4" (102) deep, 6063T5 extruded aluminum with .125" (3.2) nominal wall thickness. Caulking slots provided.

BLADES

6063T5 extruded aluminum with .125" (3.2) nominal wall thickness. K-style blades (formerly "stormproof") are positioned at 45° angle and spaced approximately 4 1/2" (114) center to center.

SCREEN

3/4" x .051" (19 x 1) expanded, flattened aluminum bird screen in removable frame. Screen adds approximately 1/2" (13) to louver depth.

FINISH

Mill.

MINIMUM SIZE

12"w x 12"h (305 x 305).

APPROXIMATE SHIPPING WEIGHT

6 lbs./ft.² (30 kg/m²).

MAXIMUM FACTORY ASSEMBLY SIZE

Shall be 75 sq. ft. (7m²) per section, not to exceed 120"w x 90"h (3048 x 2286) or 90"w x 120"h (2286 x 3048).

Louvers larger than the maximum factory assembly size will require field assembly of smaller sections.

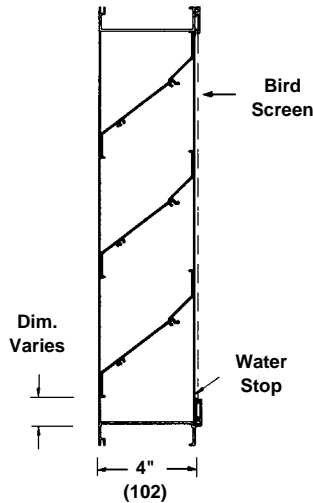
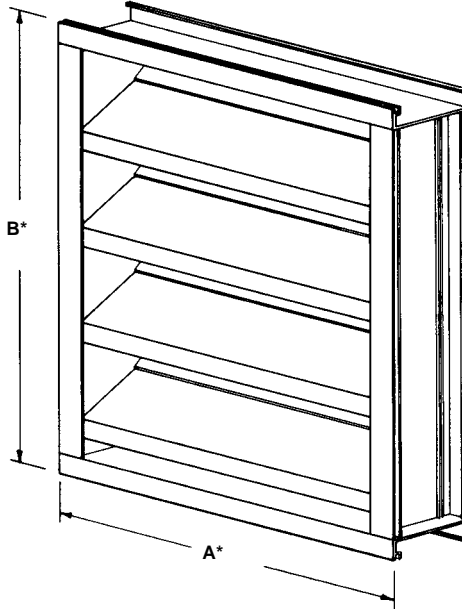
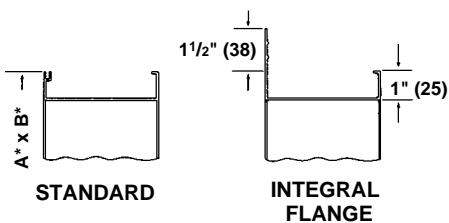
SUPPORTS

Louvers may be provided with rear mounted blade supports that increase overall louver depth depending on louver size, assembly configuration or wind-load.

Consult Ruskin for additional information.

Dimensions in inches, parenthesis () indicate millimeters.

FRAME CONSTRUCTION



FEATURES

The ELF811SH offers:

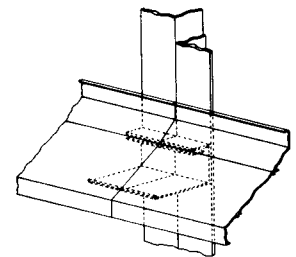
- Architecturally styled hidden mullions for attractive appearance.
- All aluminum construction for low maintenance and high resistance to corrosion.

VARIATIONS

Variations to the basic design of this louver are available at additional cost. They include:

- Extended sill.
- Hinged frame.
- Front or rear security bars.
- Filter racks.
- Installation angles.
- A variety of bird and insect screens.
- Selection of finishes: baked enamel (modified fluoropolymer), epoxy, Kynar, Pearledize, prime coat, clear and color anodize. (Some variation in anodize color consistency is possible).

Consult Ruskin for other special requirements.



Architectural Style
Hidden Mullion

*Units furnished 1/4" (6) smaller than given opening dimensions.

TAG	QTY.	SIZE		FRAME	VARIATIONS
		A*-WIDE	B*-HIGH		
PROJECT ARCH./ENGR. REPRESENTATIVE				LOCATION CONTRACTOR DATE	

FREE AREA GUIDE

Free Area Guide shows free area in ft² and m² for various sizes of ELF811SH.

	12	18	24	30	36	42	48	54	60	66	72	78	84	90	96
12	.17	.27	.37	.47	.57	.68	.78	.88	.98	1.08	1.18	1.28	1.38	1.49	1.59
30	.02	.03	.03	.04	.05	.06	.07	.08	.09	.10	.11	.12	.13	.14	.15
18	.42	.68	.93	1.18	1.44	1.69	1.94	2.20	2.45	2.70	2.96	3.21	3.47	3.72	3.97
46	.04	.06	.09	.11	.13	.16	.19	.23	.25	.27	.30	.32	.35	.37	
24	.61	.98	1.34	1.71	2.08	2.44	2.81	3.17	3.54	3.91	4.27	4.64	5.01	5.37	5.74
61	.06	.09	.12	.16	.19	.23	.26	.29	.33	.36	.40	.43	.47	.50	.53
30	.80	1.28	1.75	2.23	2.71	3.19	3.67	4.15	4.63	5.10	5.58	6.06	6.54	7.02	7.50
76	.07	.12	.16	.21	.25	.30	.34	.39	.43	.47	.52	.56	.61	.65	.70
36	1.05	1.67	2.30	2.93	3.56	4.18	4.81	5.44	6.07	6.69	7.32	7.95	8.58	9.20	9.83
91	.10	.16	.21	.27	.33	.39	.45	.51	.56	.62	.68	.74	.80	.85	.91
42	1.29	2.07	2.84	3.62	4.40	5.17	5.95	6.72	7.50	8.28	9.05	9.83	10.60	11.38	12.16
107	.12	.19	.26	.34	.41	.48	.55	.62	.70	.77	.84	.91	.98	1.06	1.13
48	1.55	2.47	3.40	4.33	5.26	6.18	7.11	8.04	8.97	9.90	10.82	11.75	12.68	13.61	14.53
122	.14	.23	.32	.40	.49	.57	.66	.75	.83	.92	1.01	1.09	1.18	1.26	1.35
54	1.73	2.77	3.81	4.85	5.89	6.93	7.97	9.01	10.05	11.09	12.13	13.17	14.21	15.25	16.29
137	.16	.26	.35	.45	.55	.64	.74	.84	.93	1.03	1.13	1.22	1.32	1.42	1.51
60	1.92	3.07	4.23	5.38	6.53	7.68	8.83	9.99	11.14	12.29	13.44	14.60	15.75	16.90	18.05
152	.18	.29	.39	.50	.61	.71	.82	.93	1.03	1.14	1.25	1.36	1.46	1.57	1.68
66	2.17	3.47	4.77	6.08	7.38	8.68	9.98	11.29	12.59	13.89	15.19	16.49	17.80	19.10	20.40
168	.20	.32	.44	.56	.69	.81	.93	1.05	1.17	1.29	1.41	1.53	1.65	1.77	1.90
72	2.42	3.87	5.32	6.77	8.22	9.67	11.12	12.57	14.02	15.47	16.92	18.37	19.82	21.27	22.72
183	.22	.36	.49	.63	.76	.90	1.03	1.17	1.30	1.44	1.57	1.71	1.84	1.98	2.11
78	2.67	4.27	5.87	7.47	9.08	10.68	12.28	13.88	15.48	17.08	18.68	20.29	21.89	23.49	25.09
198	.25	.40	.55	.69	.84	.99	1.14	1.29	1.44	1.59	1.74	1.89	2.03	2.18	2.33
84	2.86	4.57	6.28	8.00	9.71	11.43	13.14	14.85	16.57	18.28	19.99	21.71	23.42	25.14	26.85
213	.27	.42	.58	.74	.90	1.06	1.22	1.38	1.54	1.70	1.86	2.02	2.18	2.34	2.49
90	3.04	4.87	6.70	8.52	10.35	12.17	14.00	15.83	17.65	19.48	21.30	23.13	24.96	26.78	28.61
229	.28	.45	.62	.79	.96	1.13	1.30	1.47	1.64	1.81	1.98	2.15	2.32	2.49	2.66
96	3.29	5.27	7.25	9.23	11.20	13.18	15.16	17.13	19.11	21.09	23.06	25.04	27.02	28.99	30.97
244	.31	.49	.67	.86	1.04	1.22	1.41	1.59	1.78	1.96	2.14	2.33	2.51	2.69	2.88

HEIGHT - INCHES and METERS

WIDTH - INCHES and METERS

TYPICAL INSTALLATION DETAILS

Masonry Wall	Metal Panel Wall	Glazing Frame
Flange Mount	Wood Installation	Angle Subframe