

## ELM811D ADJUSTABLE LOUVER DRAINABLE BLADE EXTRUDED ALUMINUM

### STANDARD CONSTRUCTION

#### FRAME

4" (102) deep, 6063T5 extruded aluminum with .080" (2) nominal wall thickness. Downspouts and caulking slots provided.

#### BLADES

6063T5 extruded aluminum with .080" (2) nominal wall thickness. Drainable blades are positioned at 45° angle and spaced approximately 5" (127) center to center.

#### SCREEN

3/4" x .051" (19 x 1.3) expanded, flattened aluminum bird screen in removable frame. Screen adds approximately 1/2" (13) to louver depth.

#### LINKAGE

Concealed in frame.

#### BEARINGS

Stainless steel sleeve pressed into frame.

#### AXLES

1/2" (13) plated steel hex.

#### ACTUATOR

Locking louver quadrant.

#### FINISH

Mill.

#### MINIMUM SIZE

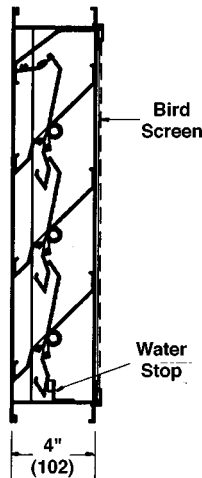
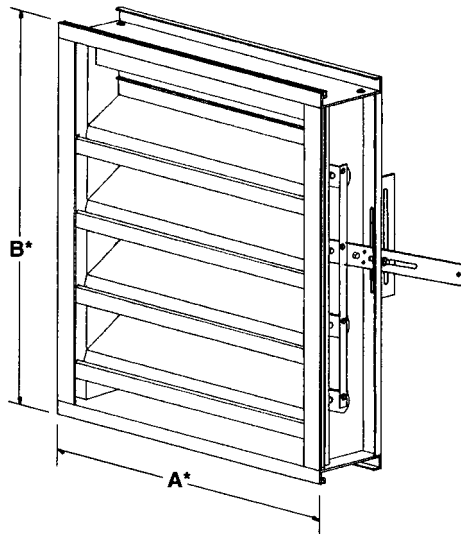
12"w x 12"h (305 x 305).

#### APPROXIMATE SHIPPING WEIGHT

6 lbs. per sq. ft.

#### MAXIMUM FACTORY ASSEMBLY SIZE

Shall be 48"w x 90"h (1219 x 2286) or 90" x 48" (2286 x 1219). Louvers larger than the maximum factory assembly size will require field assembly of smaller sections.



### FEATURES

The ELM811D offers:

- High free area, low water penetration and low pressure drop.
- Ideally suited for air intake and exhaust applications that require tight shutoff.
- Combines architectural styling with performance.
- All aluminum construction for low maintenance and high resistance to corrosion.

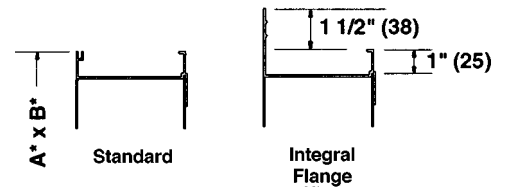
### VARIATIONS

Variations to the basic design of this louver are available at additional cost. They include:

- Extended sill.
- Hinged frame.
- Front or rear security bars.
- Filter racks.
- Blade edge and jamb seals.
- A variety of bird and insect screens.
- Selection of finishes: baked enamel (modified fluoropolymer), epoxy, Kynar, Acrodize, prime coat, integral color and clear anodize. (Some variation in anodize color consistency is possible.)
- Manual, electric or pneumatic actuators.

Consult Ruskin for other special requirements.

### FRAME CONSTRUCTION



Dimensions in inches, parenthesis ( ) indicate millimeters.

\*Units furnished 1/4" (6) smaller than given opening dimensions.

TAG	QTY.	SIZE		FRAME	VARIATIONS
		A"-WIDE	B"-HIGH		
PROJECT ARCH./ENGR. REPRESENTATIVE			LOCATION CONTRACTOR DATE		

# SUGGESTED SPECIFICATION

Furnish and install louvers as hereinafter specified where shown on plans or as described in schedules. Louvers shall be adjustable type entirely contained within a 4" (102) frame. Louver components (heads, jamps, sills, blades & mullions) shall be factory assembled by the louver manufacturer. Louver sizes too large for shipping shall be built up by the contractor from factory assembled louver sections to provide overall sizes required. Louver design shall incorporate structural supports required to withstand a wind load of 20 lbs. per sq. ft. (.96kPa) (equivalent of a 90 mph wind [145 KPH] - specifier may substitute any loading required).

Louvers shall be Ruskin Model ELF811D construction as follows:

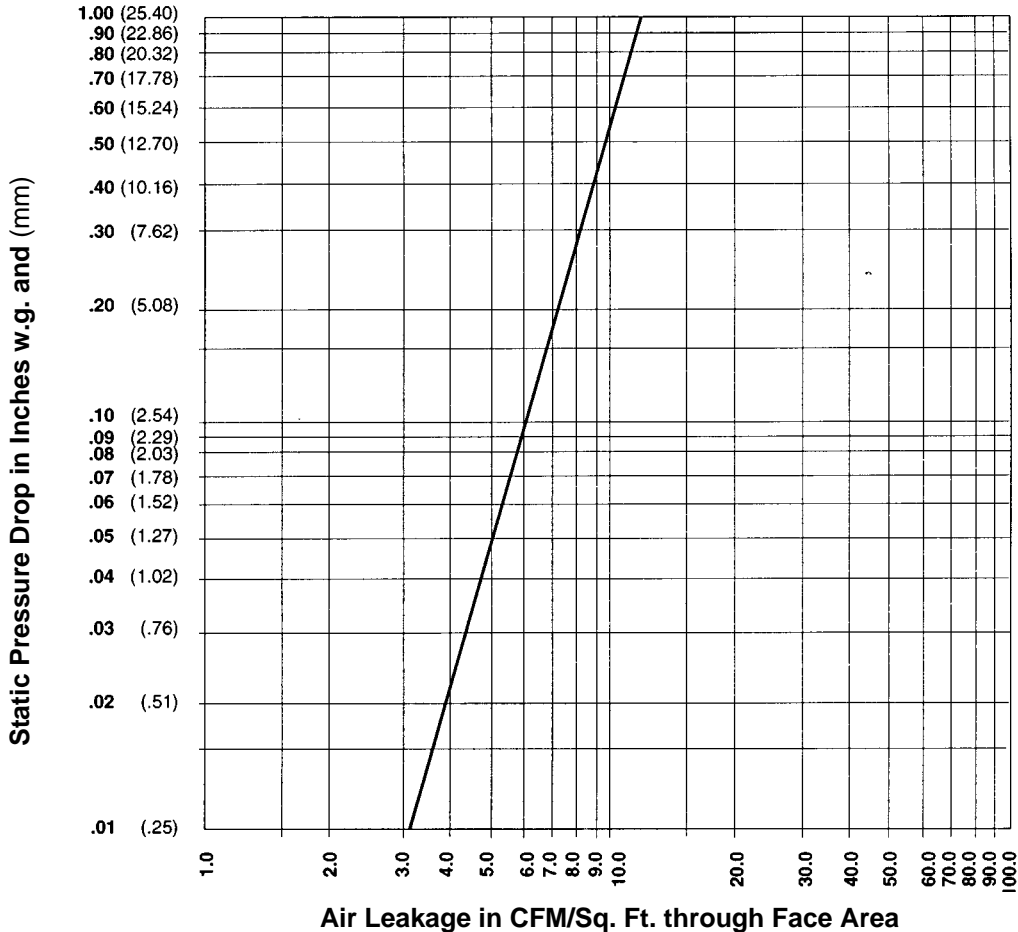
- Frame: .080" (2) wall thickness.
- Blades: .080" (2) wall thickness at 45° angle and spaced approximately 5" (127) center to center.
- Screen: 3/4" x .051" (19 x 1.3) expanded, flattened aluminum bird screen in removable frame.
- Finish: Select finish specification from Ruskin Finishes Brochure.

# PERFORMANCE DATA

AMCA Standard 500 provides a reasonable basis for testing and rating louvers. Testing to AMCA 500 is performed under a certain set of laboratory conditions. This does not guarantee that other conditions will not occur in the actual environment where louvers must operate.

The louver system should be designed with a reasonable safety factor for louver performance. To ensure protection from water carryover, design with a performance level somewhat below maximum desired pressure drop and .01 oz./sq. ft. of water penetration.

**LOUVER LEAKAGE**  
 Test size 48" wide x 48" high (1219 x 1219)



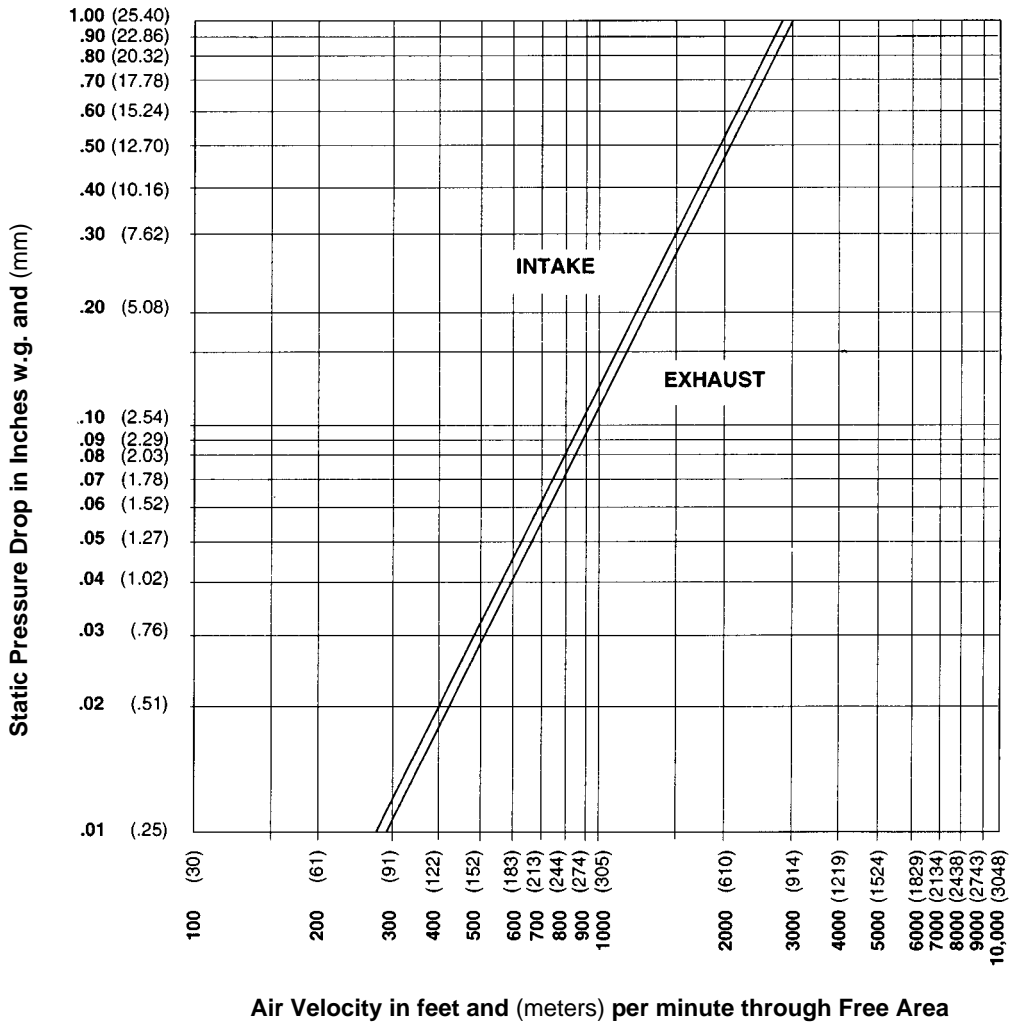
# FREE AREA GUIDE

Free Area Guide shows free area in ft<sup>2</sup> and m<sup>2</sup> for various sizes of ELM811D.

Width – Inches and Meters

Height – Inches and Meters	12		18		24		30		36		42		48		54		60		66		72		78		84		90		96		
	30	76	46	117	61	152	76	193	91	231	107	271	122	311	137	348	152	390	168	428	183	467	196	500	213	543	229	584	244	621	
12	.15	.24	.33	.42	.51	.60	.69	.78	.87	.96	1.05	1.14	1.23	1.32	1.41	1.50	1.59	1.68	1.77	1.86	1.95	2.04	2.13	2.22	2.31	2.40	2.49	2.58	2.67	2.76	
18	.37	.59	.81	1.03	1.25	1.48	1.70	1.92	2.14	2.37	2.59	2.81	3.03	3.26	3.48	3.70	3.92	4.14	4.36	4.58	4.80	5.02	5.24	5.46	5.68	5.90	6.12	6.34	6.56	6.78	
24	.58	.94	1.29	1.65	2.00	2.35	2.71	3.06	3.42	3.77	4.13	4.48	4.83	5.19	5.54	5.89	6.24	6.59	6.94	7.29	7.64	7.99	8.34	8.69	9.04	9.39	9.74	10.09	10.44	10.79	
30	.61	.97	1.34	1.71	2.08	2.45	2.81	3.18	3.55	3.92	4.29	4.66	5.02	5.39	5.76	6.12	6.49	6.86	7.22	7.59	7.95	8.32	8.68	9.05	9.41	9.78	10.14	10.50	10.86	11.22	
36	.82	1.32	1.82	2.32	2.82	3.32	3.82	4.32	4.82	5.32	5.82	6.32	6.82	7.32	7.82	8.32	8.82	9.32	9.82	10.32	10.82	11.32	11.82	12.32	12.82	13.32	13.82	14.32	14.82	15.32	
42	1.04	1.67	2.30	2.94	3.57	4.20	4.83	5.46	6.10	6.73	7.36	7.99	8.62	9.26	9.89	10.52	11.15	11.78	12.41	13.04	13.67	14.30	14.93	15.56	16.19	16.82	17.45	18.08	18.71	19.34	
48	1.26	2.02	2.79	3.55	4.31	5.08	5.84	6.61	7.37	8.13	8.90	9.66	10.43	11.19	11.95	12.71	13.47	14.23	14.99	15.75	16.51	17.27	18.03	18.79	19.55	20.31	21.07	21.83	22.59	23.35	
54	1.47	2.37	3.27	4.16	5.05	5.95	6.85	7.75	8.64	9.54	10.43	11.33	12.23	13.13	14.02	14.92	15.81	16.71	17.60	18.50	19.39	20.29	21.18	22.08	22.97	23.87	24.76	25.66	26.55	27.45	
60	1.50	2.41	3.32	4.23	5.14	6.05	6.96	7.87	8.78	9.69	10.60	11.51	12.42	13.33	14.24	15.14	16.05	16.96	17.87	18.78	19.69	20.60	21.51	22.42	23.33	24.24	25.14	26.05	26.96	27.87	
66	1.71	2.76	3.80	4.84	5.88	6.92	7.96	9.01	10.05	11.09	12.13	13.17	14.22	15.26	16.30	17.34	18.38	19.42	20.46	21.50	22.54	23.58	24.62	25.66	26.70	27.74	28.78	29.82	30.86	31.90	
72	1.93	3.11	4.28	5.45	6.63	7.80	8.97	10.15	11.32	12.50	13.67	14.85	16.02	17.19	18.36	19.53	20.70	21.87	23.04	24.21	25.38	26.55	27.72	28.89	30.06	31.23	32.40	33.57	34.74	35.91	
78	2.15	3.45	4.76	6.07	7.37	8.68	9.98	11.29	12.60	13.90	15.21	16.51	17.82	19.12	20.43	21.73	23.04	24.34	25.64	26.94	28.24	29.54	30.84	32.14	33.44	34.74	36.04	37.34	38.64	39.94	41.24
84	2.37	3.80	5.24	6.68	8.12	9.55	10.99	12.43	13.87	15.31	16.74	18.18	19.62	21.06	22.49	23.93	25.37	26.80	28.24	29.68	31.12	32.56	34.00	35.44	36.88	38.32	39.76	41.20	42.64	44.08	45.52
90	2.39	3.84	5.29	6.74	8.20	9.65	11.10	12.55	14.00	15.45	16.91	18.36	19.81	21.26	22.71	24.16	25.61	27.06	28.51	29.96	31.41	32.86	34.31	35.76	37.21	38.66	40.11	41.56	43.01	44.46	45.91
96	2.61	4.19	5.77	7.36	8.94	10.52	12.11	13.69	15.27	16.86	18.44	20.03	21.61	23.19	24.78	26.36	27.95	29.53	31.12	32.70	34.29	35.87	37.46	39.04	40.63	42.21	43.80	45.38	46.97	48.55	50.14

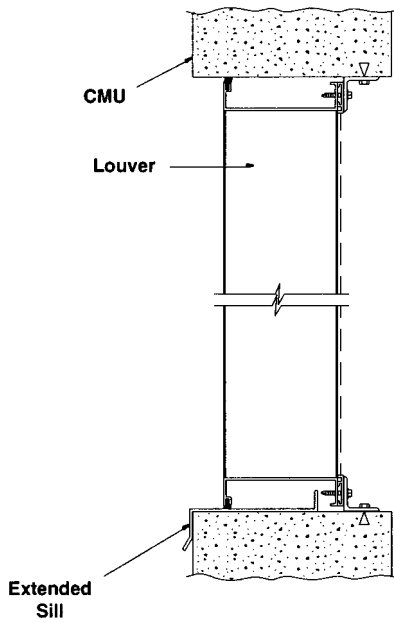
## PRESSURE DROP



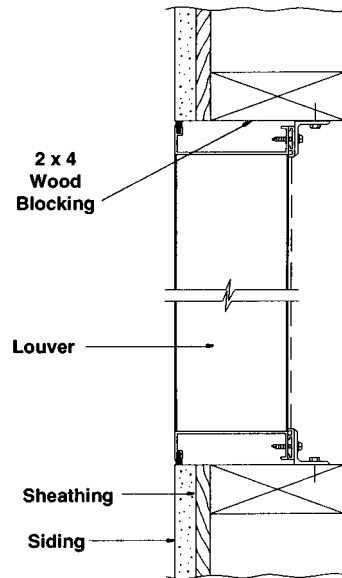
Ratings do not include the effect of a bird screen.

# TYPICAL INSTALLATION DETAILS

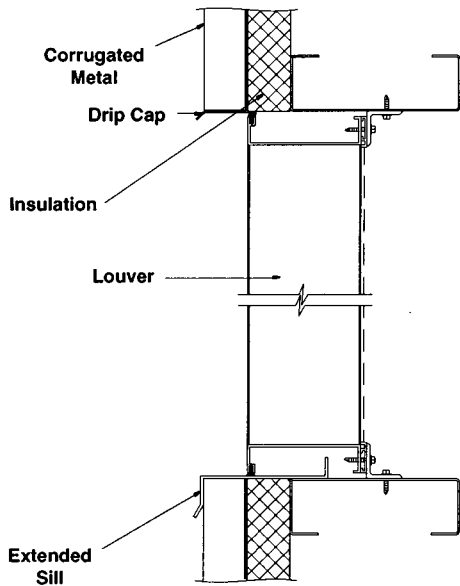
## Masonry Wall



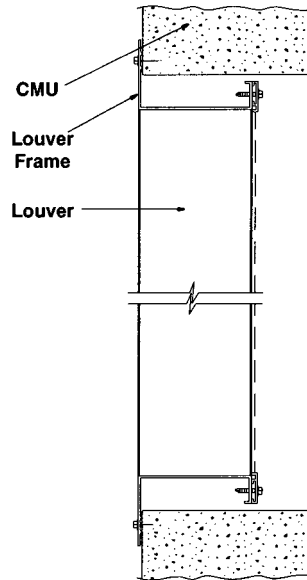
## Wood Installation



## Metal Panel Wall



## Flange Mount



Accessories at additional cost.

# RUSKIN®

3900 Dr. Greaves Rd.  
 Kansas City, MO 64030  
 (816) 761-7476  
 FAX (816) 765-8955