



3900 Dr. Greaves Rd. • Kansas City, MO 64030 • (816) 761-7476 • FAX (816) 765-8955

**ELR STATIONARY LOUVERS  
ROUND AND SEMIROUND SHAPES  
EXTRUDED ALUMINUM**

**STANDARD CONSTRUCTION\***

**FRAME**

6063T6 extruded aluminum. ELR louvers are constructed with standard or flange frames. Drainable head and jambs are not utilized so water penetration may vary from tested performance. When sloped sill frames are standard construction they may be utilized in round top shape (E) and gothic shape (F) configuration ELR shapes only.

**BLADES**

6063T6 extruded aluminum.

**SCREEN**

5/8" x .040" (16 x 1) expanded, flattened aluminum bird screen in removable frame. Screen adds approximately 1/2" (13) to louver depth.

**FINISH**

Mill.

**MINIMUM SIZE**

ELR211(D) 18" (457) diameter.  
All others - 24" (610) diameter.  
Consult Ruskin for smaller requirements.

**MAXIMUM SIZE**

Typically shall be 75 ft<sup>2</sup> (7m<sup>2</sup>) per section, not to exceed 120"w x 90"h (3048 x 2286) or 90"w x 120"h (2286 x 3048).  
Louvers larger than the maximum factory assembly size will require field assembly of smaller sections.

**SUPPORTS**

Louvers may be provided with rear mounted hidden vertical blade supports (HVBS) that increase louver depth. Support depth varies depending on louver size, assembly configuration or windload.

**PERFORMANCE**

Blade styles offered in ELR louvers are only performance tested in square louver configuration. ELR louver performance may differ from comparably sized louver in standard configuration. ELR models are not licensed to bear the AMCA Seal for performance.

**\*See individual louver model spec sheet for more detailed construction information.**

**\*Drainable ELR louvers are fabricated with non-drainable head and jambs. Water performance may differ from test.**

**FEATURES**

ELR models offer:

- Architecturally styled hidden mullions for attractive appearance.
- All aluminum construction for low maintenance and high resistance to corrosion.

**VARIATIONS**

Variations to the basic louver design are available at additional cost. They include:

- Extended sill\*
- Flanged frame
- Hinged frame
- Filter racks
- Front or rear security bars
- A variety of bird and insect screens.
- Selection of finishes: baked enamel (modified fluoropolymer), epoxy, Kynar, Acrodize, prime coat, clear and color anodize. (Some variation in anodize color consistency is possible.)

\* Extended sills on shapes E and F only.

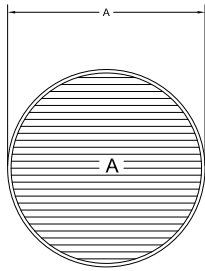
Dimensions in parenthesis ( ) indicate millimeters.

\*Units furnished 1/4" (6) smaller than given opening dimensions.

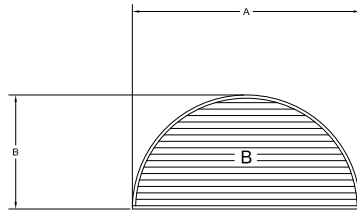
| QTY. | BLADE STYLE | SHAPE |   |   |   |   |   |   |   | SIZE |   |   | VARIATIONS |  |
|------|-------------|-------|---|---|---|---|---|---|---|------|---|---|------------|--|
|      |             | A     | B | C | D | E | F | G | H | A    | B | C |            |  |
|      |             |       |   |   |   |   |   |   |   |      |   |   |            |  |
|      |             |       |   |   |   |   |   |   |   |      |   |   |            |  |
|      |             |       |   |   |   |   |   |   |   |      |   |   |            |  |
|      |             |       |   |   |   |   |   |   |   |      |   |   |            |  |

**PROJECT:**  
**ARCH/ENGR:**  
**REPRESENTATIVE:**

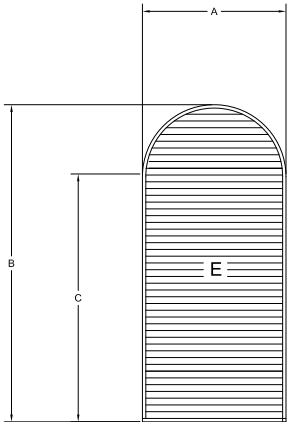
**LOCATION:**  
**CONTRACTOR:**  
**DATE:**



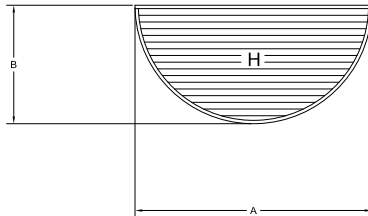
**Round (A)**



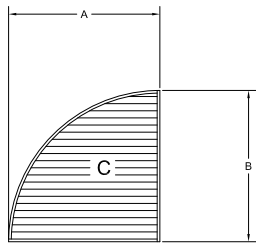
**Top Half Round (B)**



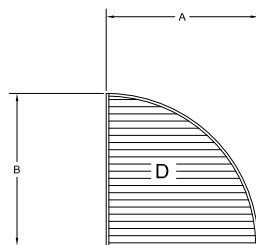
**Round Top (E)**



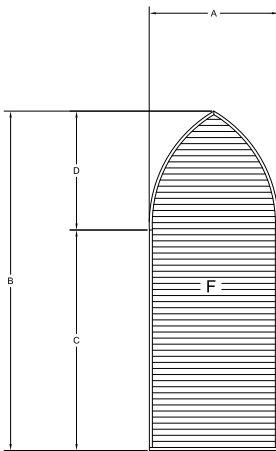
**Bottom Half Round (H)**



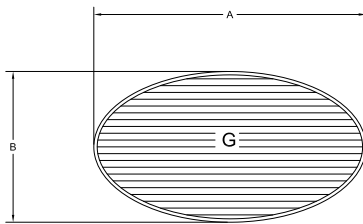
**Left Quarter Round (C)**



**Right Quarter Round (D)**



**Gothic (F)**



**Oval (G)**

| LOUVER MODEL    | FRAME DEPTH |
|-----------------|-------------|
| ELF211          | 2" (51)     |
| ELF211D         | 2" (51)     |
| ELF375X (XH)    | 4" (102)    |
| ELF375DX (DXH)  | 4" (102)    |
| ELF445DX (DXH)  | 4" (102)    |
| ELF40V          | 4" (102)    |
| ELF811DD        | 4" (102)    |
| ELF811SH        | 4" (102)    |
| ELF81S30        | 4" (102)    |
| ELF837          | 4" (102)    |
| ELF6350DMP      | 6" (152)    |
| ELF6375X (XH)   | 6" (152)    |
| ELF6375DX (DXH) | 6" (152)    |
| ELF6811         | 6" (152)    |
| ELF6811S        | 6" (152)    |
| ELF6811DD       | 6" (152)    |
| EME220DD        | 2" (51)     |
| EME420DD        | 4" (102)    |
| EME520DD        | 5" (127)    |
| EME3625         | 3" (76)     |
| EME4625         | 4" (102)    |
| EME6325D        | 6" (152)    |
| EME6625         | 6" (152)    |
| EME6625D        | 6" (152)    |