

EV538 VERTICAL CHEVRON SCREEN

Extruded Aluminum
SIGHTPROOF

STANDARD CONSTRUCTION

BLADES

6063T5 extruded aluminum with .080" (2) nominal thickness, chevron style. Blades are 4⁵/₈" wide x 5³/₈" (117 x 137) deep, spaced as specified between 3³/₈" to 4³/₈" (86 x 111) (4³/₈" (111) is standard. Vertical arrangement is standard.

SUPPORT

As required per wind loading. Consult Ruskin.

FINISH

Mill is standard. Special finishes such as baked enamel (modified fluoropolymer), epoxy, Kynar, Pearledize, integral color and clear anodize. (Some variation in anodize color consistency is possible).

MINIMUM SIZE

16"w x 12"h (406 x 305).

APPROXIMATE SHIPPING WEIGHT

5 lbs. per sq. ft. (25 kg per m²).

MAXIMUM FACTORY ASSEMBLY SIZE

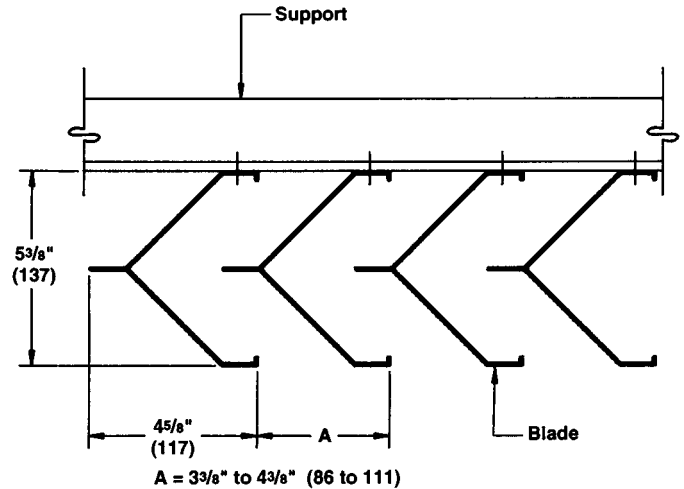
Shall be 75 sq. ft. (7m²) per section, not to exceed 120" wide and 90" high (3048 and 2286) or 90" wide and 120" high (2286 and 3048).

Screens larger than the maximum factory assembly size will require field assembly of smaller sections.

FEATURES

The EV538 design features:

- Variable blade spacing allows for high free area, added economy, or a sight proof design.
- Architecturally styled, hidden supports for attractive appearance.
- All aluminum construction for lightweight, low maintenance, and high resistance to corrosion.



PLAN VIEW

SUGGESTED SPECIFICATION

Furnish and install sightproof screens as described in schedules. Screen components shall be factory assembled by manufacturer. Sizes too large for shipping shall be built up by the contractor from factory assembled sections to provide overall sizes required. Design shall incorporate blade supports required to withstand a wind load of 20 lbs. per sq. ft. (96 kPa) (equivalent of a 90 mph wind [145 KPH] – specifier may substitute any loading required) when attached to structural supports supplied by others.

Screens shall be Ruskin Model EV538 6063T5 extruded aluminum alloy construction as follows:

Blades: .080" (2) nominal thickness, chevron style, 4⁵/₈" wide x 5³/₈" deep (117 x 137), spaced at (specify) between 3³/₈" to 4³/₈" [86 to 111]).

Fasteners: Anchorage shall be concealed and not visible on the exterior face of the screen.

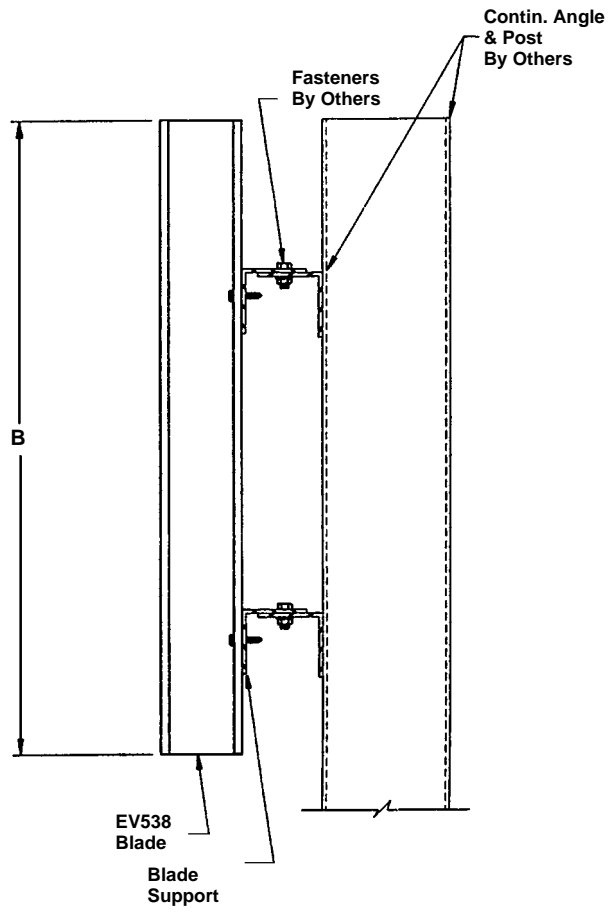
Finish: Select finish specification from Ruskin Finishes Brochure.

Dimensions in parenthesis () indicate millimeters.

Units are furnished actual size.

QTY.	SIZE		A- BLADE SPACING	VARIATIONS
	WIDE	HIGH		
PROJECT ARCH./ENGR. REPRESENTATIVE			LOCATION CONTRACTOR DATE	

TYPICAL INSTALLATION DETAIL



RUSKIN[®]

3900 Dr. Greaves Rd.
Kansas City, MO 64030
(816) 761-7476
FAX (816) 765-8955
www.ruskin.com