

ELF375DXD DRAINABLE STATIONARY LOUVER

MIAMI-DADE APPROVED

MIAMI-DADE COUNTY, FLORIDA NOTICE OF ACCEPTANCE NUMBER: 15-0923.05 (Expires 1/3/18)
Florida Product Approval #FL10234.1

STANDARD CONSTRUCTION

FRAME

4" (102) deep, 6063T5 extruded aluminum with .081" (2.1) nominal wall thickness. Downspouts and caulking slots provided.

BLADES

6063T5 extruded aluminum, .081" (2.1) nominal wall thickness. Drainable blades are positioned at 37¹/₂° angle and spaced approximately 5³/₃₂" (129) center to center.

SCREEN

⁵/₈" x .040" (16 x 1) expanded, flattened aluminum bird screen in removable frame. Screen adds approximately 1/2" (13) to louver depth.

FINISH

Mill.

APPROXIMATE SHIPPING WEIGHT

6 lbs./ft.² (29.3 kg/m²).

MINIMUM SIZE

12"w x 12"h (305 x 305).

MAXIMUM SIZE

79¹⁵/₁₆"w x 120"h (2031 x 3048) factory assembly, unlimited width x 120"h (3048) field assembly. Louvers larger than the maximum factory assembly size will require field assembly of smaller sections.

INSTALLATION

The ELF375DXD must be installed per the appropriate installation detail. Reference the appropriate separate installation instruction sheets.

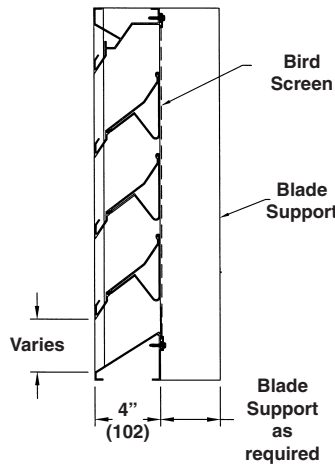
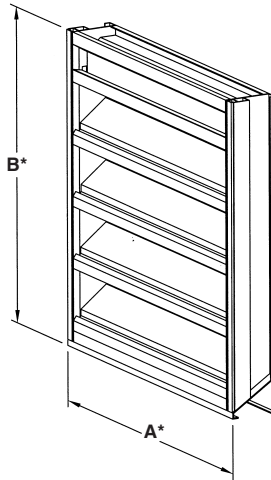
BLADE SUPPORTS

Factory installed on louvers over 28" (635) wide. Support depth is 3" (76) on louvers 60" (1524) tall and under. Support depth is 6" (152) on louvers over 60" (1524) tall.

RECYCLED CONTENT

10% Post Consumer.
30% Pre Consumer, Post Industrial.

Dimensions in inches, parenthesis () indicate millimeters.



FEATURES

- Approved for use in open structures with provisions to manage weather infiltration (wet rooms).
- Maximum windload ±130 PSF (6.22 kPa).
- High performance frame system with drainable head collects and removes water to provide excellent water penetration performance.
- Drain gutter in each blade minimizes water cascade between blades.
- 49% Free Area in 48" x 48" (1.2 x 1.2) size.
- Published performance ratings based on testing in accordance with AMCA Publication 511.
- Aluminum construction for low maintenance and high resistance to corrosion.
- All welded construction.

VARIATIONS

Variations to the basic design of these louvers are available at additional cost. They include:

- Extended sill.
- Front or rear security bars.
- Filter racks.
- A variety of bird and insect screens.
- Optional finishes available at additional cost: prime coat, baked enamel (modified fluoropolymer), epoxy, Pearledize, Kynar, clear and color anodize. (Some variation in anodize color consistency is possible.)

Consult Ruskin for other special requirements.

*Units furnished 1/2" (13) smaller than given opening dimensions.

TAG	QTY.	SIZE		FRAME	WALL DEPTH	VARIATIONS
		A*-WIDE	B*-HIGH			
PROJECT				LOCATION		
ARCH./ENGR.				CONTRACTOR		
REPRESENTATIVE				DATE		

MIAMI-DADE COUNTY HURRICANE STRUCTURAL TEST PERFORMANCE

SIZES TESTED: 240¹/₁₆"w x 120"h (6098 x 3048) and 240¹/₁₆"w x 60"h (6098 x 1524)

TAS 201-94 LARGE MISSILE IMPACT TEST

MISSILE TYPE	VELOCITY IN FT/SEC (M/SEC)	IMPACTS
9 lb (4kg) Southern Pine 2" x 4" (51 x 102)	50 (15.24)	7

TAS 202-94 UNIFORM STATIC AIR PRESSURE TEST

LOAD IN PSF (kPA)	LOAD DURATION	LOUVER RECOVERY
+111 (+5.3)	30 seconds	100%
-111 (-5.3)	30 seconds	100%
+148 (+7.1)	30 seconds	100%
-148 (-7.1)	30 seconds	100%
+222 (+10.6)	30 seconds	100%
-222 (-10.6)	30 seconds	100%

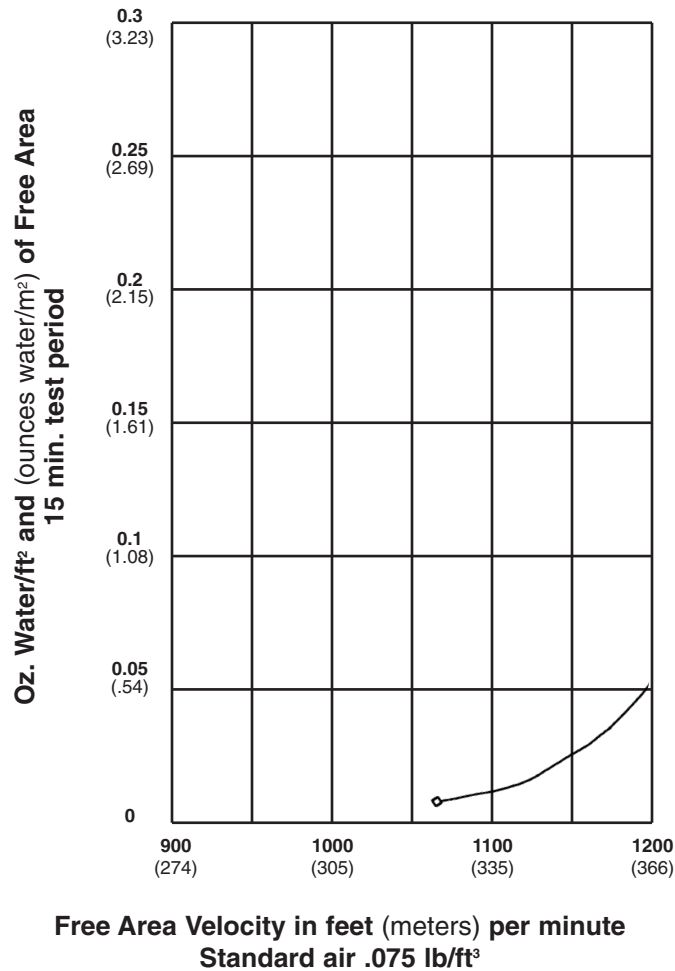
TAS 203-94 CYCLIC WIND PRESSURE TEST

CYCLES	LOAD IN PSF (kPA)	LOAD DURATION CYCLE	LOUVER RECOVERY
600	+74 (+3.54)	1 to 3 seconds	100%
600	-74 (-3.54)	1 to 3 seconds	100%
70	+88.8 (+4.25)	1 to 3 seconds	100%
70	-88.8 (-4.25)	1 to 3 seconds	100%
1	+192.4 (+9.21)	1 to 3 seconds	100%
1	-192.4 (-9.21)	1 to 3 seconds	100%

WATER PENETRATION

Test size 48" wide x 48" high (1219 x 1219)

Beginning point of water penetration at .01 oz./sq. ft. is 1055 fpm (322 m/min).

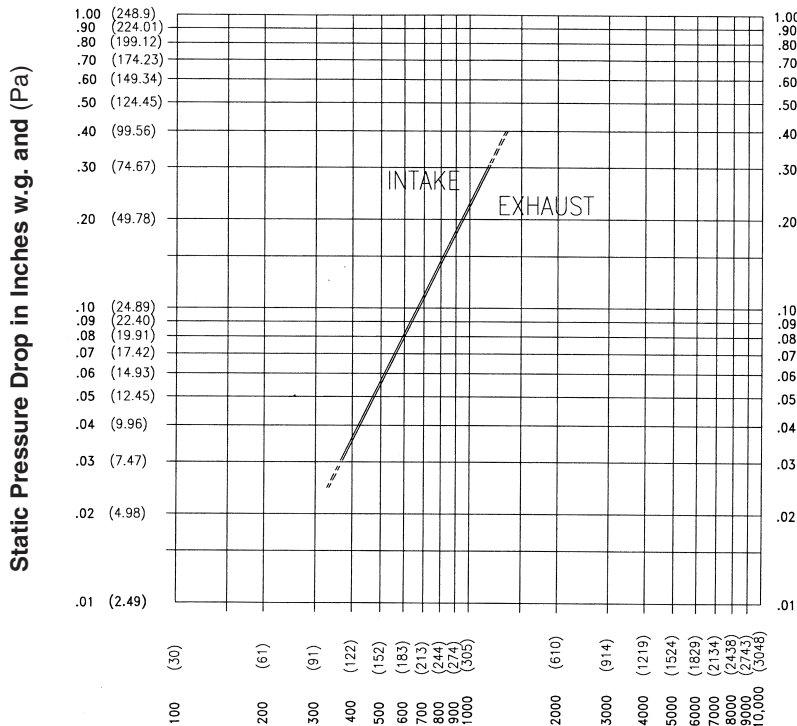


FREE AREA GUIDE

Free Area Guide shows free area in ft² and m² for various sizes of ELF375DXD.
Width – Inches and Meters

	12		18		24		30		36		42		48		54		60		66		72		78		80		
	0.30	0.46	0.61	0.76	0.91	1.07	1.22	1.37	1.52	1.68	1.83	1.98	2.03	2.19	2.34	2.49	2.64	2.79	2.94	3.09	3.24	3.39	3.54	3.69	3.84	3.99	
12	0.16	0.36	0.57	0.78	0.99	1.20	1.41	1.62	1.82	2.03	2.24	2.45	2.52	0.30	0.01	0.03	0.05	0.04	0.09	0.11	0.13	0.15	0.17	0.19	0.21	0.23	0.23
18	0.28	0.65	1.02	1.39	1.76	2.13	2.50	2.87	3.24	3.62	3.99	4.36	4.48	0.46	0.03	0.06	0.09	0.13	0.16	0.20	0.23	0.27	0.30	0.34	0.37	0.41	0.42
24	0.40	0.93	1.47	2.00	2.53	3.07	3.60	4.13	4.67	5.20	5.73	5.60	5.78	0.61	0.04	0.09	0.14	0.19	0.24	0.29	0.33	0.38	0.43	0.48	0.53	0.52	0.54
30	0.52	1.22	1.91	2.61	3.30	4.00	4.70	5.39	6.09	6.78	7.48	7.30	7.54	0.76	0.05	0.11	0.18	0.24	0.31	0.37	0.44	0.50	0.57	0.63	0.70	0.68	0.70
36	0.62	1.44	2.27	3.09	3.92	4.74	5.57	6.40	7.22	8.05	8.87	9.70	9.97	0.91	0.06	0.13	0.21	0.29	0.36	0.44	0.52	0.59	0.67	0.75	0.83	0.90	0.93
42	0.74	1.73	2.72	3.70	4.69	5.68	6.67	7.65	8.64	9.63	10.62	11.60	11.93	1.07	0.07	0.16	0.25	0.34	0.44	0.53	0.62	0.71	0.80	0.90	0.99	1.08	1.11
48	0.86	2.01	3.16	4.31	5.46	6.61	7.76	8.91	10.06	11.21	12.36	13.51	13.90	1.22	0.08	0.19	0.29	0.40	0.51	0.61	0.72	0.83	0.94	1.04	1.15	1.26	1.29
54	0.98	2.30	3.61	4.92	6.23	7.55	8.86	10.17	11.48	12.80	14.11	15.42	15.86	1.37	0.09	0.21	0.34	0.46	0.58	0.70	0.82	0.95	1.07	1.19	1.31	1.43	1.47
60	1.11	2.58	4.06	5.53	7.01	8.48	9.96	11.43	12.90	14.38	15.85	17.33	17.82	1.52	0.10	0.24	0.38	0.51	0.65	0.79	0.93	1.06	1.20	1.34	1.47	1.61	1.66
66	1.20	2.81	4.41	6.02	7.62	9.23	10.83	12.43	14.04	15.64	17.25	18.85	19.39	1.68	0.11	0.26	0.41	0.56	0.71	0.86	1.01	1.16	1.31	1.45	1.60	1.75	1.80
72	1.33	3.09	4.86	6.63	8.39	10.16	11.93	13.69	15.46	17.23	18.99	20.76	21.35	1.83	0.12	0.29	0.45	0.62	0.78	0.94	1.11	1.27	1.44	1.60	1.77	1.93	1.99
78	1.45	3.38	5.31	7.23	9.16	11.09	13.02	14.95	16.88	18.81	20.74	22.67	23.31	1.98	0.13	0.31	0.49	0.67	0.85	1.03	1.21	1.39	1.57	1.75	1.93	2.11	2.17
84	1.57	3.66	5.75	7.84	9.94	12.03	14.12	16.21	18.30	20.39	22.49	24.58	25.27	2.13	0.15	0.34	0.53	0.73	0.92	1.12	1.31	1.51	1.70	1.90	2.09	2.29	2.35
90	1.69	3.94	6.20	8.45	10.71	12.96	15.21	17.47	19.72	21.98	24.23	26.49	27.24	2.29	0.16	0.37	0.58	0.79	1.00	1.21	1.41	1.62	1.83	2.04	2.25	2.46	2.53
96	1.81	4.23	6.65	9.06	11.48	13.89	16.31	18.73	21.14	23.56	25.98	28.39	29.20	2.44	0.17	0.39	0.62	0.84	1.07	1.29	1.52	1.74	1.97	2.19	2.42	2.64	2.72
102	1.91	4.46	7.00	9.55	12.0	14.64	17.19	19.73	22.28	24.82	27.37	29.92	30.76	2.59	0.18	0.41	0.65	0.89	1.12	1.36	1.60	1.84	2.07	2.31	2.55	2.78	2.86
108	2.03	4.74	7.45	10.16	12.87	15.57	18.28	20.99	23.70	26.41	29.12	31.82	32.73	2.74	0.19	0.44	0.69	0.94	1.20	1.45	1.70	1.95	2.20	2.46	2.71	2.96	3.04
114	2.15	5.02	7.89	10.77	13.64	16.51	19.38	22.25	25.12	27.99	30.86	33.73	34.69	2.90	0.20	0.47	0.73	1.00	1.27	1.54	1.80	2.07	2.34	2.60	2.87	3.14	3.23
120	2.27	5.31	8.34	11.37	14.41	17.44	20.47	23.51	26.54	29.57	32.61	35.64	36.65	3.05	0.21	0.49	0.78	1.06	1.34	1.62	1.90	2.19	2.47	2.75	3.03	3.31	3.41

PRESSURE DROP



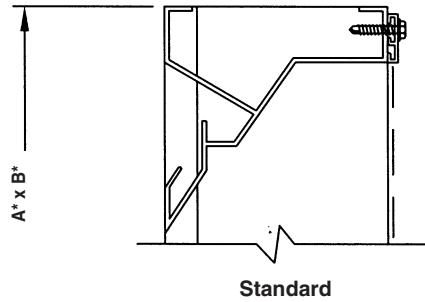
Ratings do not include the effect of a bird screen.



Ruskin Manufacturing Company certifies that the ELF375DXD Louvers shown herein are licensed to bear the AMCA Seal. The ratings shown are based on tests and procedures performed in accordance with AMCA Publication 511 and comply with the requirements of the AMCA Certified Ratings Program. The AMCA Certified Ratings Seal applies to air performance ratings and water penetration ratings only.

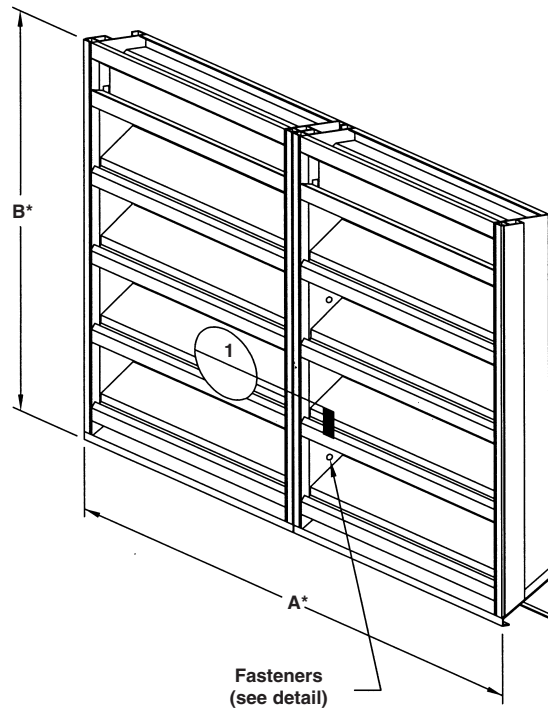
Air Velocity in feet and (meters) per minute through Free Area

FRAME CONSTRUCTION



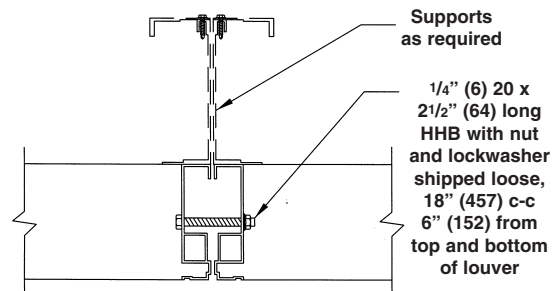
Standard

MULTI SECTION FIELD SPLICE DETAIL



GENERAL NOTES:

1. Reference separate Installation Instruction sheets for installation details. Each frame style has a distinct installation method that must be compiled for Miami-Dade and Florida Approval. It is the responsibility of the installing contractor to properly install the louvers per the appropriate detail.
2. On special orders, Ruskin may provide submittal and/or shop drawings. Reference these drawings for additional installation information.
3. Louvers may be provided with hidden vertical blade supports (HVBS) that increase overall installation depth by several inches. Consult Ruskin Louver Engineering for exact HVBS depth.
4. Louvers wider than the maximum single section width will be shipped in multiple sections and will require field assembly.



1. SPLICE DETAIL PLAN

RUSKIN[®]

3900 Dr. Greaves Rd.
Kansas City, MO 64030
(816) 761-7476
FAX (816) 765-8955
www.ruskin.com