

GFL800D STATIONARY LOUVER EXTRUDED ALUMINUM

STANDARD CONSTRUCTION

FRAME

4" (102) deep, 6063T5 extruded aluminum with .080" (2) nominal wall thickness. Box or integral flange frames are available with integral downsouts. Caulking surfaces provided on box frame.

BLADES

6063T5 extruded aluminum with .063" (1.6) nominal wall thickness. Drainable blades are positioned at 45° angle and spaced approximately 5" (127) center to center.

SCREEN

3/4" x .051" (19 x 1.3) expanded, flattened aluminum bird screen in removable frame. Aluminum 1/2" x .063" mesh bird or 18-16 mesh insect screens are also available. Screen adds approximately 1/2" (13) to louver depth.

FINISH

Mill.

INSTALLATION ANGLES

1 1/2" x 1 1/2" x 1/8" thick x 2" long aluminum clip angles with holes and two #10 self drilling screws (clip to louver) provided loose (clip to wall fasteners not included). Install clips 6" max. from ends and at 24" max. between for 20 psf windload.

MINIMUM SIZE

12"w x 12"h (305 x 305).

APPROXIMATE SHIPPING WEIGHT

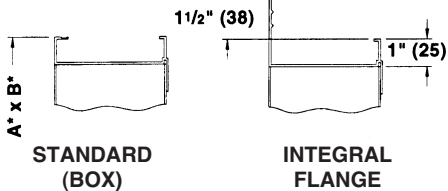
4 lbs./ft.² (20 kg/m²).

MAXIMUM SIZE

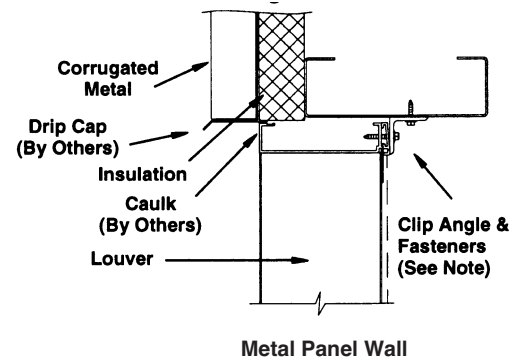
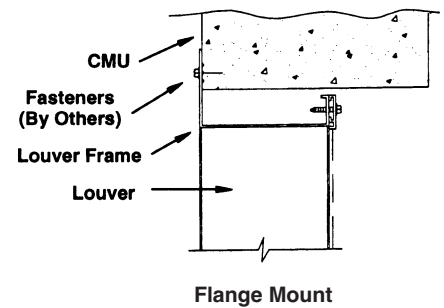
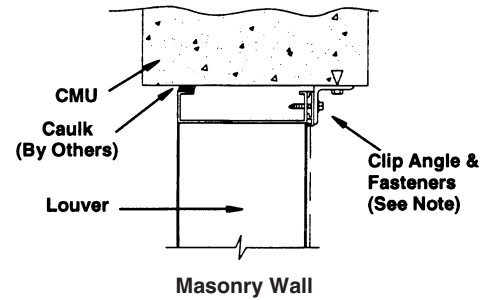
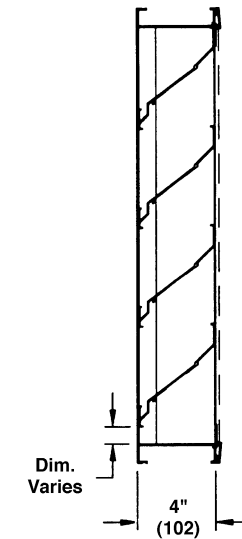
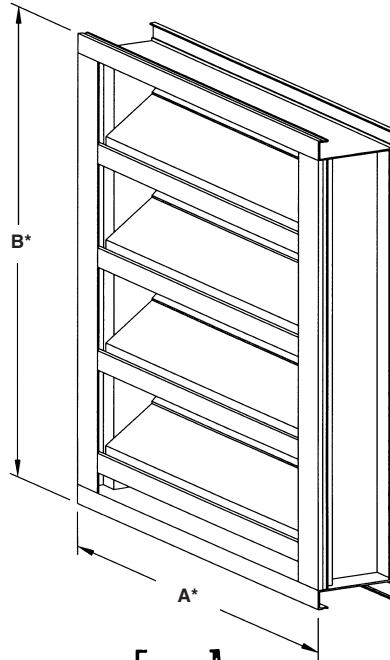
60"w x 60"h (1524 x 1524).

FRAME CONSTRUCTION

(Specify one)



Dimensions in parenthesis () indicate millimeters.



*Units furnished 1/4" (6) smaller than given opening dimensions.

TAG	QTY.	SIZE*		FRAME	VARIATIONS
		A-WIDE	B-HIGH		
PROJECT ARCH./ENGR. REPRESENTATIVE				LOCATION CONTRACTOR DATE	

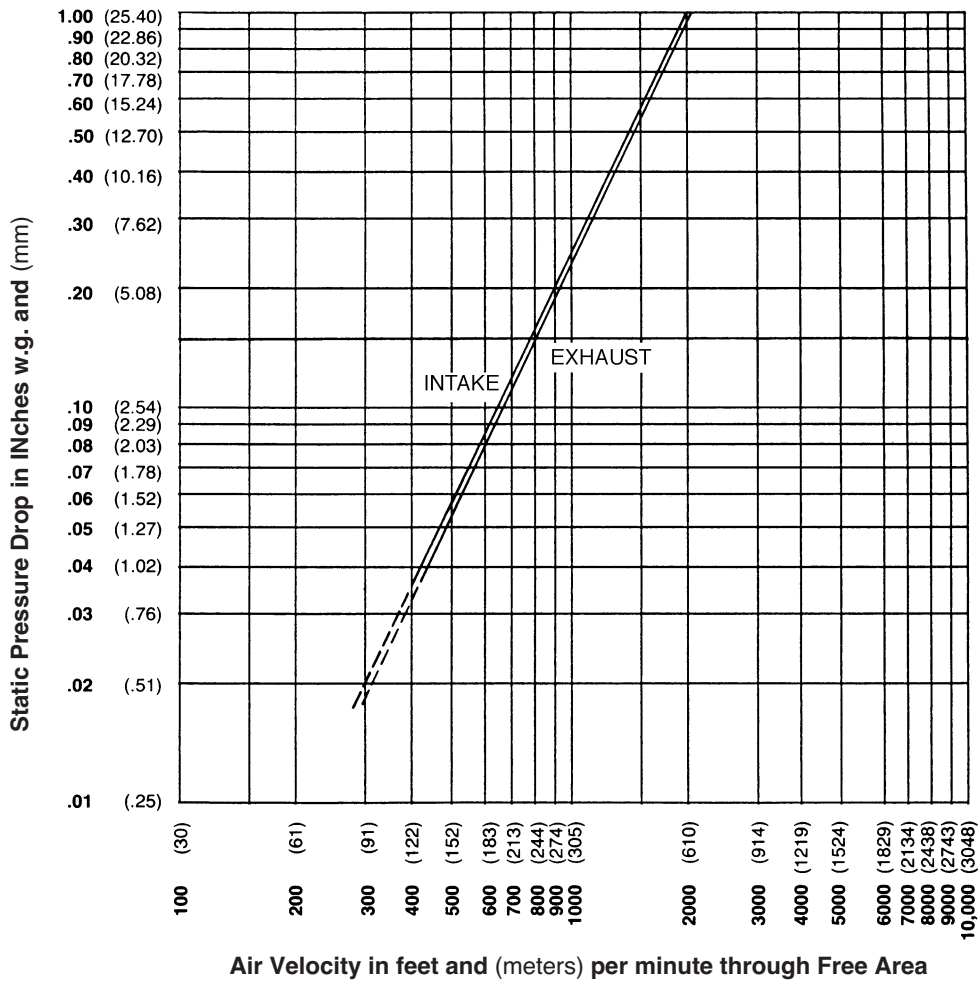
FREE AREA GUIDE

Free Area Guide shows free area in ft² and m² for various sizes of GFL800D.

Height – Inches and Meters	12	18	24	30	36	42	48	54	60
	0.30	0.46	0.61	0.76	0.91	1.07	1.22	1.37	1.52
12	.17	.27	.38	.48	.58	.69	.79	.90	1.00
0.30	.02	.03	.04	.04	.05	.06	.07	.08	.09
18	.43	.69	.95	1.20	1.46	1.72	1.98	2.24	2.49
0.46	.04	.06	.09	.11	.14	0.16	.18	.21	.23
24	.69	1.11	1.52	1.93	2.35	2.76	3.18	3.59	4.01
0.61	.06	.10	.14	.18	.22	0.26	.30	.33	.37
30	.95	1.52	2.09	2.66	3.23	3.81	4.38	4.95	5.52
0.76	.09	.14	.19	.25	.30	0.35	.41	.46	.51
36	1.21	1.94	2.67	3.39	4.12	4.85	5.58	6.30	7.03
0.91	.11	.18	.25	.32	.38	0.45	.52	.59	.65
42	1.25	2.04	2.83	3.62	4.41	5.20	5.99	6.78	7.57
1.07	.12	.19	.26	.34	.41	0.48	.56	.63	.70
48	1.58	2.52	3.47	4.42	5.36	6.31	7.26	8.20	9.15
1.22	.15	.23	.32	.41	.50	0.59	.67	.76	.85
54	1.84	2.94	4.04	5.15	6.25	7.35	8.46	9.56	10.66
1.37	.17	.27	.38	.48	.58	0.68	.79	.89	.99
60	2.10	3.36	4.62	5.88	7.14	8.40	9.66	10.91	12.17
1.52	.20	.31	.43	.55	.66	0.78	.90	1.01	1.13

Width – Inches and Meters

PRESSURE DROP



3900 Dr. Greaves Rd.
 Kansas City, MO 64030
 (816) 761-7476
 www.ruskin.com