

XP500 FEMA LOUVER CHEVRON BLADE FEMA 361 GRILLE

STANDARD CONSTRUCTION

FRAME

2" x 5 1/2" x 2" (51 x 140 x 51) channel 1/4" (6) Thick Extruded Aluminum.

BLADES

3" x 3" x 1/4" (75 x 75 x 6) Thick Chevron Style Extruded Aluminum.

BIRD SCREEN

5/8" x .040" (16 x 1.) expanded flattened aluminum bird screen in removable frame. Screen adds approximately 1/2" (13) to louver depth. Screen required to meet spawling component to FEMA 361 standards.

FINISH

Mill.

MINIMUM SIZE

12"w x 12"h (305 x 305).

APPROXIMATE SHIPPING WEIGHT

13 lbs. per sq. ft. (193.5 kg/m²)

MAXIMUM SHIPPING SECTION SIZE

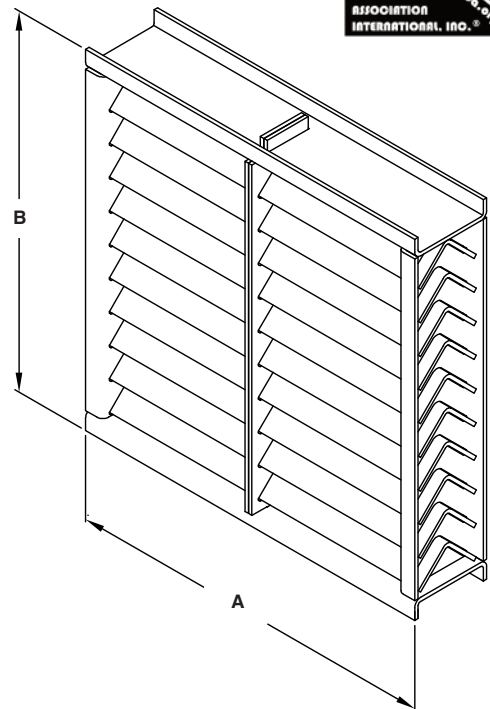
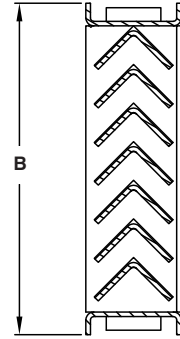
For 300 psf 48"w x 78"h (1220 x 1982)
For 230 psf 48"w x 90"h (1220 x 2286)
For 200 psf 48"w x 96"h (1220 x 2439)

MAXIMUM OVERALL ASSEMBLY SIZE

Unlimited width x one section tall.

FEATURES

- Louver complies with FEMA 361 Design and Construction for Community Shelters, Zone IV criteria, 250 MPH wind, 15 lb. 2x4 impact at 100 mph for Tornado's.
- Louver complies with FEMA 361 Design and Construction for Community Shelters, Zone IV criteria, 230 MPH wind, 15 lb. 2x4 impact at 100 mph for Hurricanes.
- Louver mounted externally in combination with wall louver or by itself internally (See attached).
- 46% Free Area.
- Optional finishes available at additional cost: prime coat, 50% and 70% PVDF (modified fluoropolymer), epoxy, Acrodize.
- This product is Listed to applicable UL Standards and Requirements.



Dimensions in inches, parenthesis () indicate millimeters.

*Units furnished 1/4" (6) smaller than given opening.

TAG	QTY.	SIZE		VARIATIONS
		A*-WIDE	B*-HIGH	
PROJECT		LOCATION		
ARCH./ENGR.		CONTRACTOR		
REPRESENTATIVE		DATE		

FREE AREA GUIDE

Free Area Guide shows free area in ft² and m² for various sizes of XP500.

Width – Inches and Meters

	12	18	24	30	36	42	48
	0.30	0.46	0.61	0.76	0.91	1.07	1.22
12	0.27	0.44	0.62	0.67	0.85	1.02	1.19
	0.30	0.03	0.04	0.06	0.06	0.08	0.09
18	0.50	0.81	1.12	1.23	1.54	1.85	2.17
	0.46	0.05	0.08	0.10	0.11	0.14	0.17
24	0.69	1.13	1.57	1.72	2.16	2.59	3.03
	0.61	0.06	0.11	0.15	0.16	0.20	0.24
30	0.94	1.54	2.13	2.33	2.93	3.52	4.12
	0.76	0.09	0.14	0.20	0.22	0.27	0.33
36	1.19	1.94	2.69	2.94	3.70	4.45	5.20
	0.91	0.11	0.18	0.25	0.27	0.34	0.41
42	1.44	2.35	3.26	3.56	4.47	5.37	6.28
	1.07	0.13	0.22	0.30	0.33	0.41	0.50
48	1.67	2.72	3.78	4.13	5.19	6.24	7.29
	1.22	0.16	0.25	0.35	0.38	0.48	0.58
54	1.85	3.02	4.19	4.58	5.75	6.92	8.09
	1.37	0.17	0.28	0.39	0.43	0.53	0.64
60	2.10	3.43	4.75	5.19	6.52	7.85	9.17
	1.52	0.20	0.32	0.44	0.48	0.61	0.73
66	2.35	3.83	5.31	5.81	7.29	8.77	10.26
	1.68	0.22	0.36	0.49	0.54	0.68	0.81
72	2.60	4.23	5.87	6.42	8.06	9.70	11.34
	1.83	0.24	0.39	0.55	0.60	0.75	0.90
78	2.84	4.64	6.44	7.03	8.83	10.63	12.42
	1.98	0.26	0.43	0.60	0.65	0.82	0.99
84	3.07	5.00	6.94	7.59	9.52	11.46	13.40
	2.13	0.28	0.46	0.64	0.70	0.88	1.06
90	3.26	5.31	7.37	8.06	10.11	12.17	14.23
	2.29	0.30	0.49	0.68	0.75	0.94	1.13
96	3.50	5.72	7.93	8.67	10.88	13.10	15.31
	2.44	0.33	0.53	0.74	0.81	1.01	1.22

Height – Inches and Meters

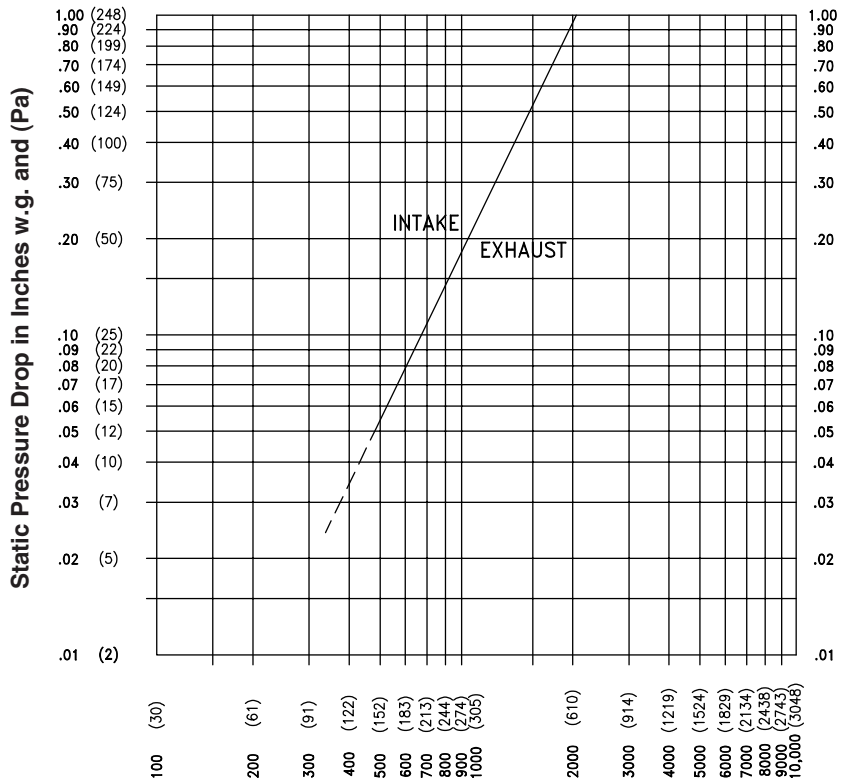
WATER PENETRATION

Test size 48" w x 48" h (1219 x 1219)
Beginning point of water penetration at
.01 oz./sq. ft. is 652 fpm (199 m/min).



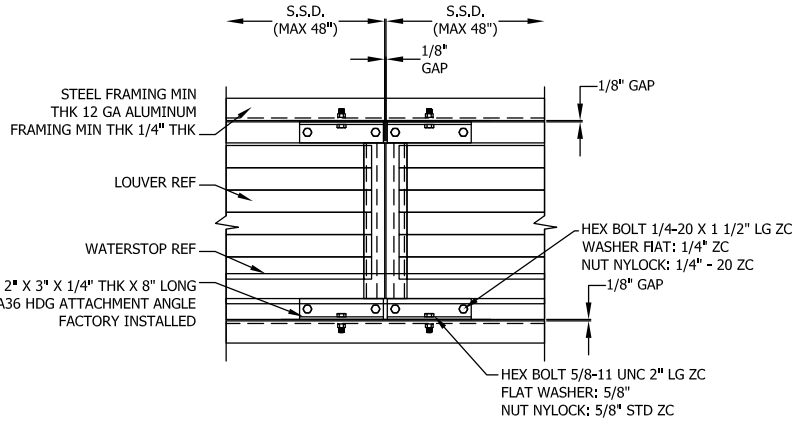
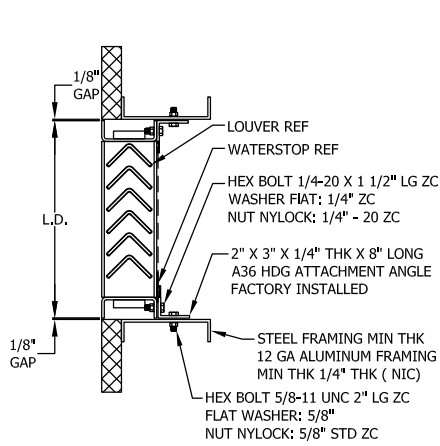
Ruskin Company certifies that the XP500 Louvers shown herein are licensed to bear the AMCA Seal. The ratings shown are based on tests and procedures performed in accordance with AMCA Publication 511 and comply with the requirements of the AMCA Certified Ratings Program. The AMCA Certified Ratings Seal applies to air performance ratings and water penetration ratings only.

PRESSURE DROP DATA

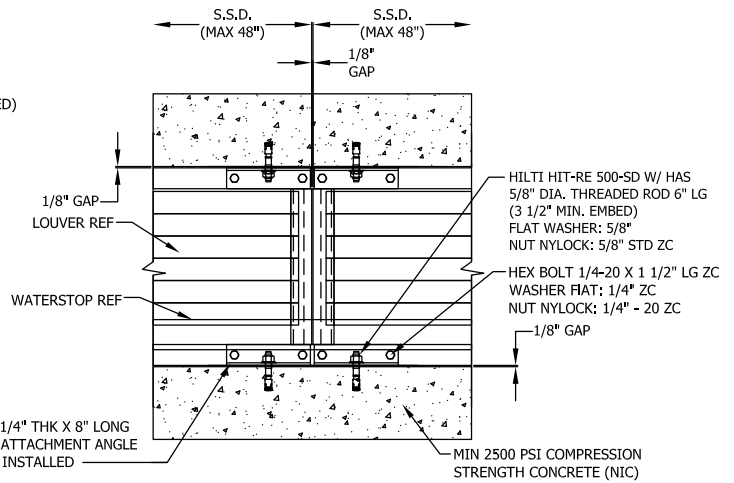
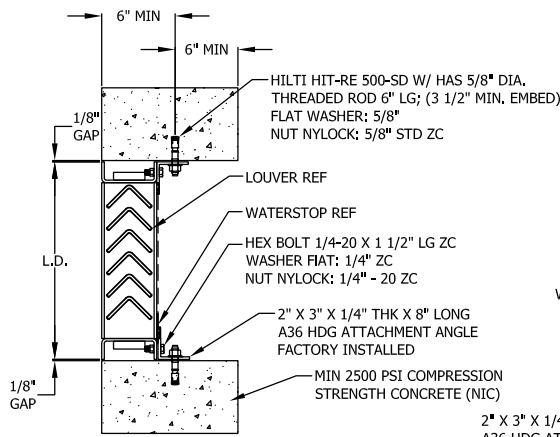


Air Velocity in feet (meters) per minute through Free Area
(Data corrected to standard air density and AMCA figure or figures tested to 5.5)

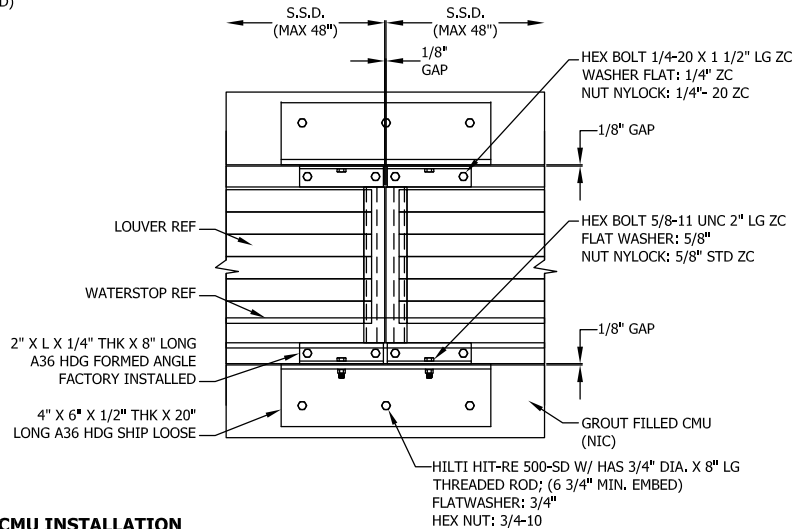
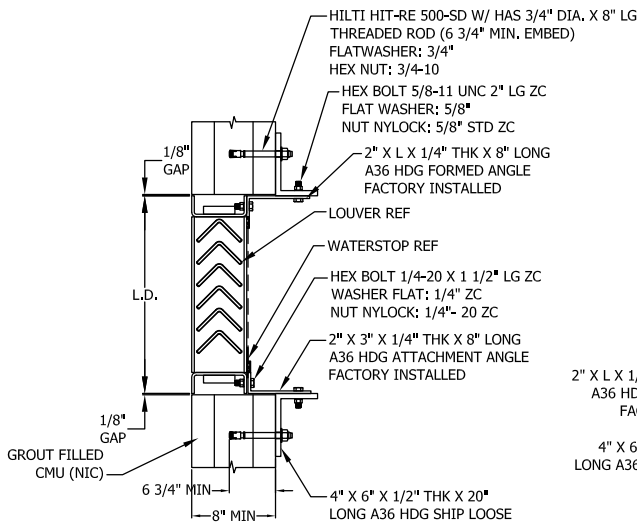
INSTALLATION DETAILS



STEEL INSTALLATION



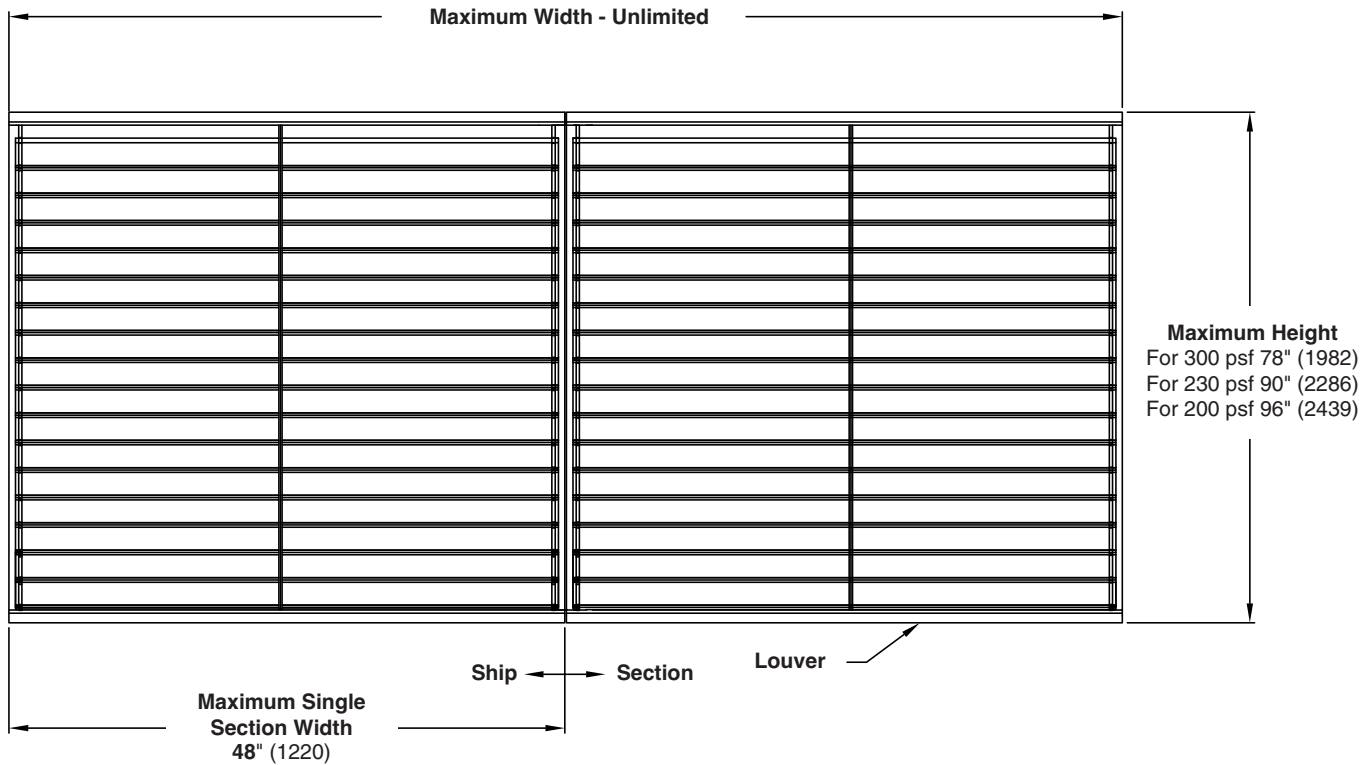
CONCRETE INSTALLATION



CMU INSTALLATION

CONSTRUCTION INFORMATION

SHIP SECTION INFORMATION



1. Reference separate installation instruction sheets for installation details. It is the responsibility of the installing contractor to properly install the louvers per the appropriate detail.
2. On special orders, Ruskin may provide submittal and/or shop drawings. Reference these drawings for additional installation information.
3. Louvers wider than the maximum single section width will be shipped in multiple sections and will require field assembly. Field assembly is not by Ruskin.

RUSKIN[®]

3900 Dr. Greaves Rd.
Kansas City, MO 64030
(816) 761-7476
FAX (816) 765-8955
www.ruskin.com