

**RUSKIN®**



*Replacement Parts Catalog*

# Table of Contents

This catalog offers Damper customers an easy to use buying guide for miscellaneous Ruskin Damper parts. The Damper part prices in this catalog do include freight within the contiguous 48 states. Please refer to the table of contents below to determine where to find complete details on products, pricing, and ordering. If the part you need is not found on the following pages, please call Ruskin at 816-761-7476 or your local Ruskin representative for additional information.

Miscellaneous Parts	3
Jackshaft Assembly (Detail Drawing)	4
Jackshaft Parts Descriptions & List Prices	5
Jackshaft Parts Miscellaneous	6
Jackshaft Kits	7
Fuse Link Accessories	8
Miscellaneous Blade Seal Pricing	10
Motor Bracket Prices	11
Blade Position Indicators	12
Economizer Controls	13

**PLEASE CONTACT RUSKIN OR YOUR LOCAL RUSKIN REPRESENTATIVE FOR DISCOUNT MULTIPLIER INFORMATION.**

**ATTENTION:** A \$35.00 net handling charge will be added to each order totaling less than \$50.00 net.

The performance specifications are nominal and conform to acceptable industry standards. For applications at conditions beyond these specifications, consult the local Ruskin representative. Ruskin Company shall not be liable for damages resulting from misapplication or misuse of its products.

*\*All stated specifications are subject to change without notice or obligation.*

# Miscellaneous Parts

## MODEL – ESS375



3/8" Square x 3-1/2" Long  
Extended Shaft with Spring Clip

## MODEL – ESR050



Extended Shaft  
1/2" Diameter x 6" Long

## MODEL – OBSB050



Outboard Support Bracket  
for Extended Shaft

## MODEL – OBSB050B



Outboard Support Bracket  
with Bearing for Extended Shaft

## MODEL – OBSB0502



2" Deep Outboard Support  
Bracket for Extended Shaft

## MODEL – SC2532



Spring Clip for Extended Shaft

## MODEL – ESK050



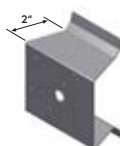
Extended Shaft Kit Includes:  
ESR050, OBSB050, SC2532

## MODEL – ESK050B



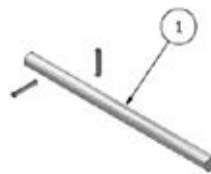
Extended Shaft Kit  
with Bearing Includes:  
ESR050, OBSB050B, SC2532

## MODEL – CDRST0B2

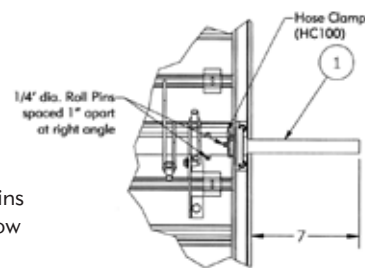


2" Stand Off Bracket  
for Round Dampers

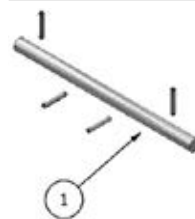
## MODEL – JSA075E



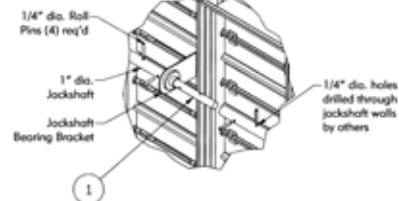
Jackshaft Extension  
3/4" Diameter x 12" Long  
Solid Bar Includes 2 Roll Pins  
Used for 1" Diameter Hollow  
Jackshafts Only  
(Holes drilled in field by others)



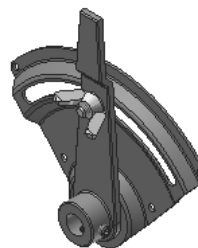
## MODEL – JSA075S



Jackshaft Splice  
3/4" Diameter x 12" Long  
Solid Bar Includes 4 Roll Pins  
(Holes drilled in field by others)



## MODEL – HQR050



Galvanized Steel Hand Quadrant  
for 1/2" Diameter Shaft

## MODEL – HQRSS050

Stainless Steel Hand Quadrant  
for 1/2" Diameter Shaft

## MODEL – HDHQ050

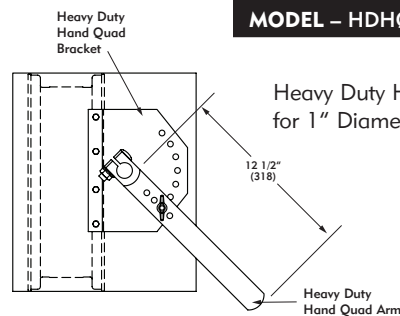
Heavy Duty Hand Quad Arm for 1/2" Diameter Shaft

## MODEL – HDHQ075

Heavy Duty Hand Quad Arm  
for 3/4" Diameter Shaft

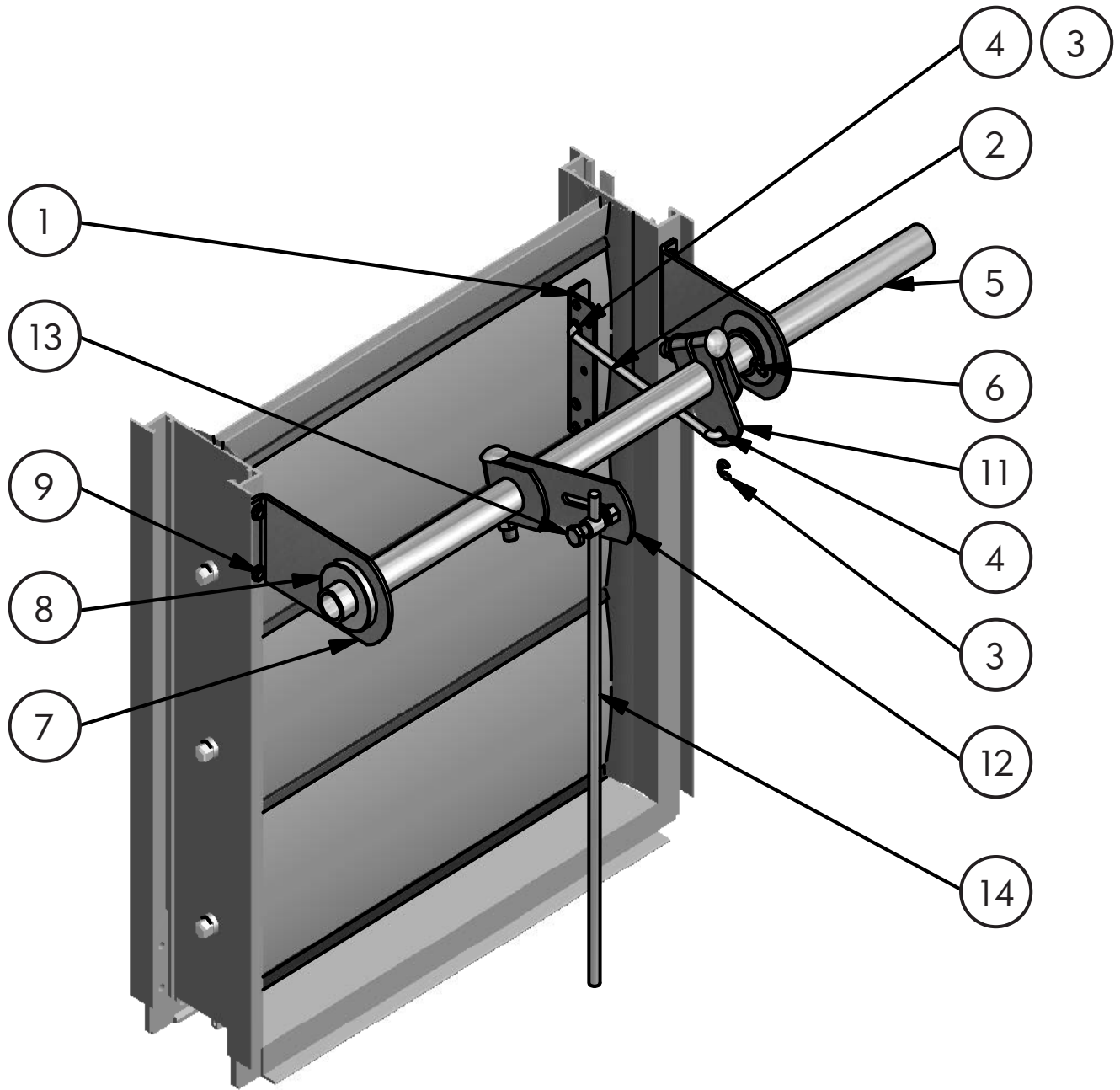
## MODEL – HDHQ100

Heavy Duty Hand Quad Arm  
for 1" Diameter Shaft



\*All stated specifications are subject to change without notice or obligation.

# Jackshaft Assembly



*\*All stated specifications are subject to change without notice or obligation.*

## Jackshaft Parts for Field Installation

DES	PART #	DESCRIPTION
1a	3VGBB	Triple V-Groove Blade Bracket (CD35, 36, 44, 45, 46 & 51)
1b	AFLBB	Airfoil Blade Bracket (CD50 & CD60)
2a	TR2393	Tie Rod
2b	TR20013	* Tie Rod 5.92" Long
3	E-25	Roto Clip (Minimum order of 25 when not purchased as a Jackshaft Kit)
4	NL4L2FF	Nyliner 4L2-FF (Minimum order of 25 when not purchased as a Jackshaft Kit)
—	3VGBBASY	Triple V-Groove Blade Bracket Assembly: Includes 1a thru 4 above
—	AFLBBASY	Airfoil Blade Bracket Assembly: Includes 1b thru 4 above
5a	JS050	Jackshaft 1/2" Diameter
5b	JS100	Jackshaft 1" Diameter
6a	HC050	Hose Clamp 1/2" Diameter Jackshaft HC8 (Minimum order of 25 when not purchased as a Jackshaft Kit)
6b	HC100	Hose Clamp 1" Diameter Jackshaft HC16 (Minimum order of 25 when not purchased as a Jackshaft Kit)
7a	JSBB05S	Jackshaft Bearing Bracket 1/2" Short (2-1/8" to centerline of jackshaft)
7b	JSBB05T	Jackshaft Bearing Bracket 1/2" Tall (3-3/4" to centerline of jackshaft)
7c	JSBB10S	Jackshaft Bearing Bracket 1" Short (2-1/8" to centerline of jackshaft)
7d	JSBB10T	* Jackshaft Bearing Bracket 1" Tall (3-3/4" to centerline of jackshaft)
7e	JSBB10ET	Jackshaft Bearing Bracket 1" Extra Tall (6" to centerline of jackshaft)
8a	KB050	Kendale Bearing 1/2" Diameter
8b	KB100	Kendale Bearing 1" Diameter
9	10TEKS	#10 – 16 x 3/4" Large TEK Screws (Minimum order of 25)
10	NFBN5389	Nylon Flange Bearing N5389 used only on triple v-groove blades without add on blade bracket (Minimum order of 25 when not purchased as a Jackshaft Kit)
11a	050LCA	1/2" Diameter Linkage Control Arm Assembly (Includes #10 above)
11b	100LCA	1" Diameter Linkage Control Arm Assembly (Includes #10 above)
12a	CA050	Crank Arm Slotted for 1/2" Diameter Jackshaft
12b	CA075	Crank Arm for 3/4" Diameter Jackshaft Adaptor
12c	CA100	Crank Arm Slotted for 1" Diameter Jackshaft
13a	BJ312	Balljoint for 5/16" Diameter Pushrod
13b	BJ375	Balljoint for 3/8" Diameter Pushrod
14a	PR312`	Pushrod 5/16" Diameter
14b	PR375	Pushrod 3/8" Diameter

\*These parts are to be used on jackshafts for direct/internally mounted actuators with 1" Diameter jackshafts.

\*All stated specifications are subject to change without notice or obligation.

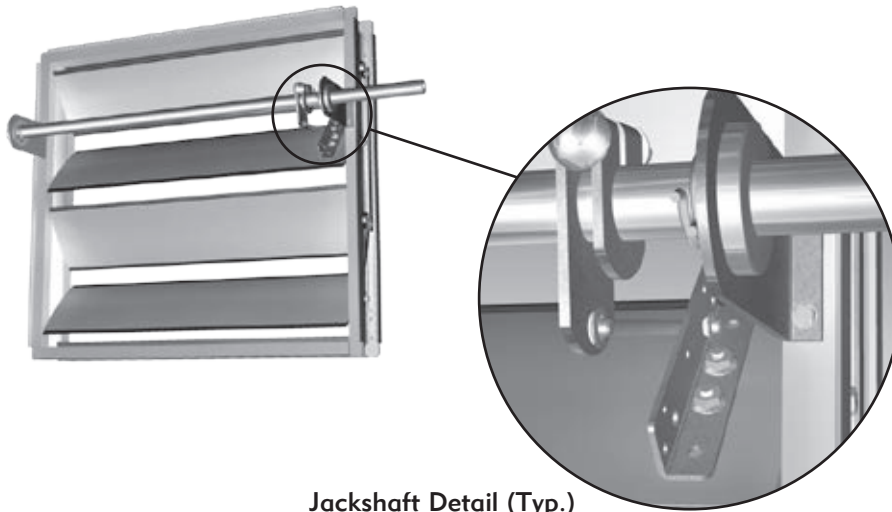
# Miscellaneous Jackshaft Parts

<b>1a</b>	<b>3VGBB</b>	<b>1b</b>	<b>AFLBB</b>	<b>2a</b>	<b>TR2393</b> 4.97" Long	<b>2b</b>	<b>TR20013</b> 5.92" Long	<b>3</b>	<b>E25</b>
<b>4</b>	<b>NL4L2FF</b>	<b>—</b>	<b>3VGBBASY</b>	<b>—</b>	<b>AFLBBASY</b>	<b>5a</b>	<b>JS050</b> 1/2" Diameter	<b>5b</b>	<b>JS100</b> 1" Diameter
<b>6a</b>	<b>HC050</b> 1/2" Diameter	<b>6b</b>	<b>HC100</b> 1" Diameter	<b>7a</b>	<b>JSBB05S</b> 2-1/8	<b>7b</b>	<b>JSBB05T</b> 3-3/4	<b>7c</b>	<b>JSBB10S</b> 2-1/8
<b>7d</b>	<b>JSBB10T</b> 3-3/4	<b>7e</b>	<b>JSBB10ET</b> 6	<b>8a</b>	<b>KB050</b> 1/2" Diameter	<b>8b</b>	<b>KB100</b> 1" Diameter	<b>9</b>	<b>10TEKS</b>
<b>10</b>	<b>NFBN5389</b>	<b>11a</b>	<b>050LCA</b>	<b>11b</b>	<b>100LCA</b>	<b>12a</b>	<b>CA050</b>	<b>12b</b>	<b>CA075</b>
<b>12c</b>	<b>CA100</b>	<b>13a</b>	<b>BJ312</b> For 5/16" Diameter Rod	<b>13b</b>	<b>BJ375</b> For 3/8" Diameter Rod	<b>14a</b>	<b>PR312</b> 5/16" Diameter Rod	<b>14b</b>	<b>PR375</b> 3/8" Diameter Rod

\*All stated specifications are subject to change without notice or obligation.

# Jackshaft Kits

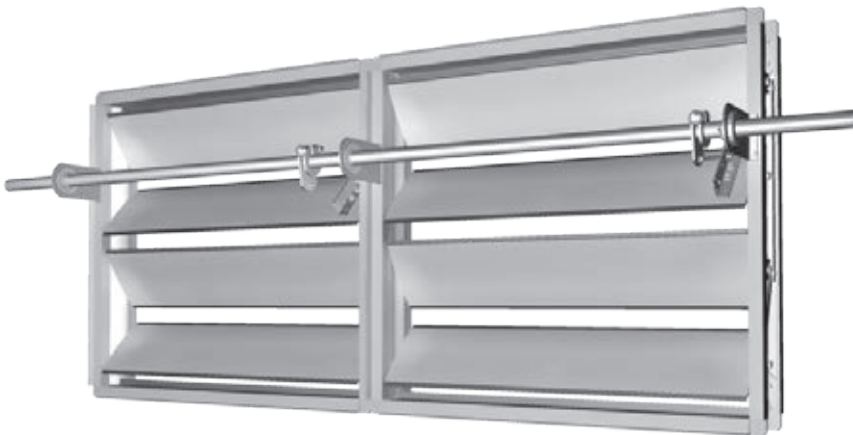
## JS1X1 Jackshaft Kit



JS1X1 3VG 1/2" DIA  
JS1X1 AFL 1/2" DIA  
JS1X1 3VG 1" DIA  
JS1X1 AFL 1" DIA  
Jackshaft is 66" long

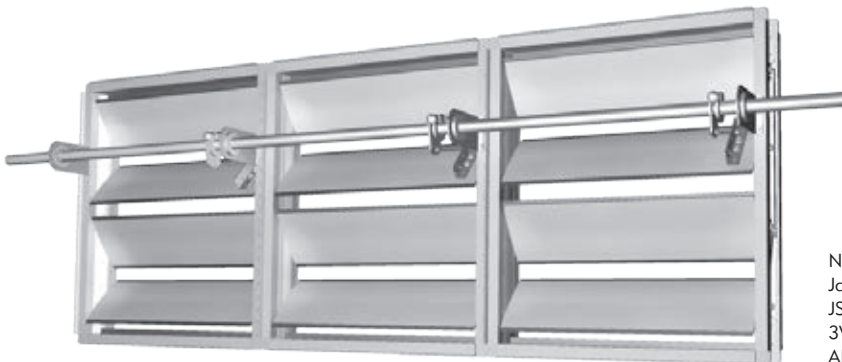
Jackshaft Detail (Typ.)

## JS2X1 Jackshaft Kit



JS2X1 3VG 1/2" DIA  
JS2X1 AFL 1/2" DIA  
JS2X1 3VG 1" DIA  
JS2X1 AFL 1" DIA  
Jackshaft is 108" long

## JS3X1 Jackshaft Kit



JS3X1 3VG 1" DIA  
JS3X1 AFL 1" DIA

Note:  
Jackshaft is 156" long  
JS3X1 kit not available with 1/2' diameter jackshaft.  
3VG = Tipple V-Groove Blade Damper (CD36)  
AFL= Air Foil Blade Damper (CD60)

*\*All stated specifications are subject to change without notice or obligation.*

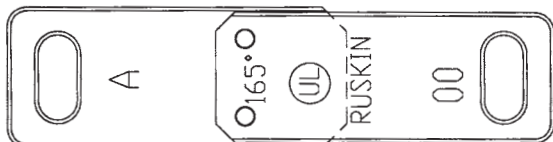
# Fuse Link Accessories

## Fuse Link Accessories for IBD, CFD, FD, and FSD Models

**FUSE LINK** — Specify 165°F, 212°F, or 285°F (74°C, 100°C or 141°C)

### MODEL – FLIA\*\*\*

**Issue A Link**  
All (D)IBD Curtain Type Fire Dampers  
Excluding IBDT Series



### MODEL – FLIJ\*\*\*

**J Link**  
All CFD Ceiling Fire Dampers  
All PFL's (Pneumatic Fuse Links)



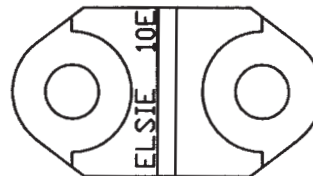
### MODEL – FLIB\*\*\*

**Issue B Link**  
For IBDT Curtain Type Fire Dampers  
For FDR25 Round Fire Dampers  
Also may be used as a replacement  
on CFD Ceiling Fire Dampers



### MODEL – FLIE\*\*\*

**Issue E Link**  
FD35 and FD36  
Multiple Blade Fire Dampers

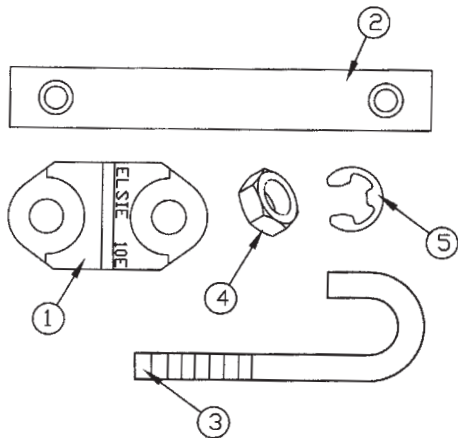


**FUSE LINK** — Specify 165°F, 212°F, or 285°F (74°C, 100°C or 141°C)

### MODEL – FDLA\*\*\*

#### FD Fuse Link Assembly

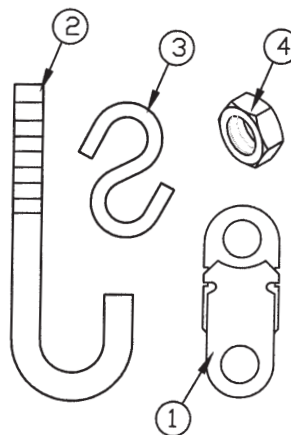
1. Issue 'E' Fuse Link
2. Link Bar
3. (2) 'S' Hooks
4. (2) 1/4-20 Nuts
5. (2) 'E' Clips



### MODEL – FDLA\*\*\*

#### FDR Fuse Link Assembly

1. Issue 'B' Fuse Link
2. 'J' Bolt
3. (2) 'S' Hooks
4. (2) 1/4-20 Nuts



\*\*\* = Temperature 165°F, 212°F, or 285°F. Temperature must be provided when ordering. EX: FDLA 165

\*All stated specifications are subject to change without notice or obligation.



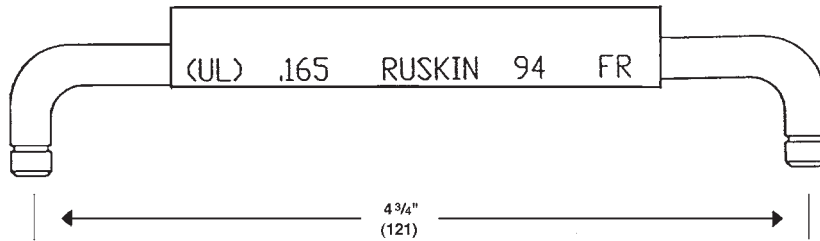
# Fuse Link Accessories

## Fuse Link Accessories for IBD, CFD, FD, and FSD Models

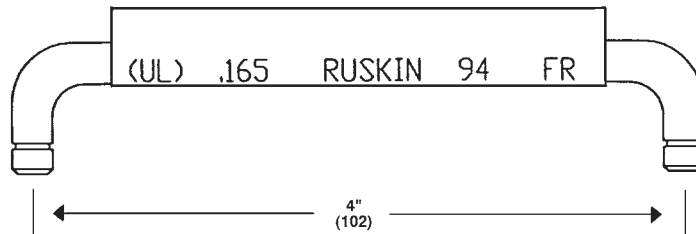
### 4935 FUSIBLE ROD (NO LONGER USED)

Specify 165°F or 212°F (74°C or 100°C) for all FSD Series Combination Fire Smoke Damper models (excluding FSDR25) manufactured prior to 1996  
Refer to EFL or PFL spec sheets for dampers manufactured after 1996.

#### MODEL – FR49354\*\*\*



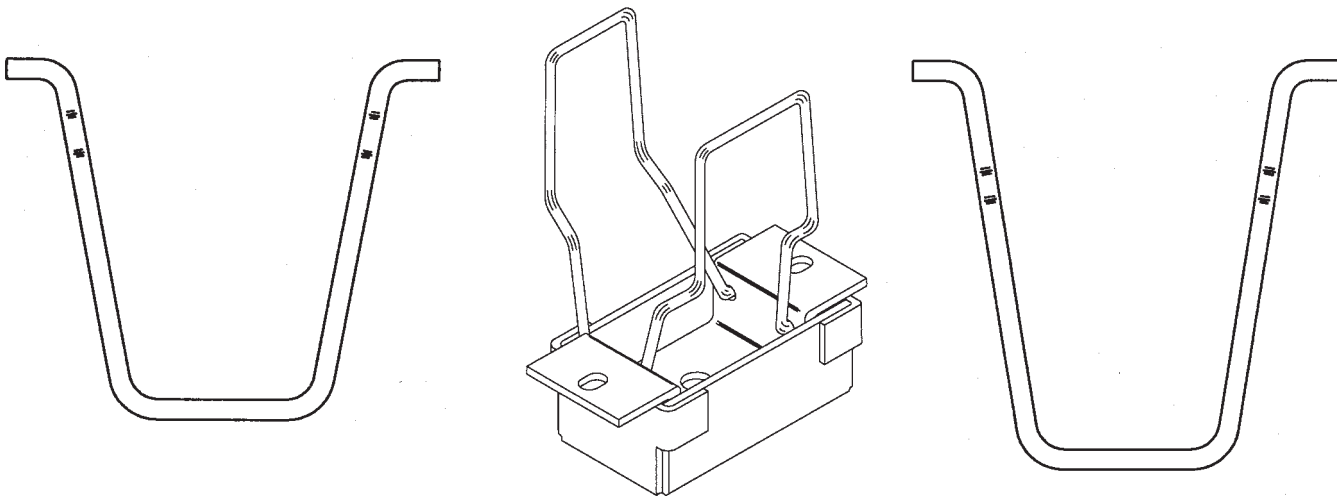
#### MODEL – FR49354\*\*\*



### VOLUME ADJUST

Specify 165°F or 212°F (74°C or 100°C) option for all Ceiling Fire Dampers (CFD's)

#### MODEL – VOLADJ\*\*\*



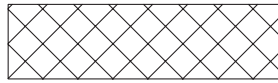
Lift arms are shown actual size.

\*\*\* = Temperature 165°F, 212°F, or 285°F. Temperature must be provided when ordering. EX: FR49354 285

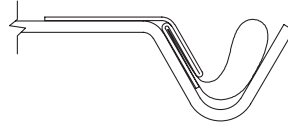
\*All stated specifications are subject to change without notice or obligation.

# Miscellaneous Blade Seals

## Blade Seals & Blade Stop Replacements



AA



A



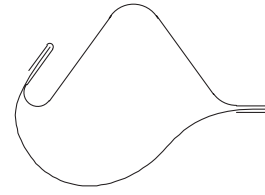
B



C



D



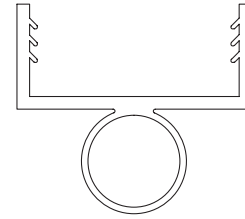
E



F



G



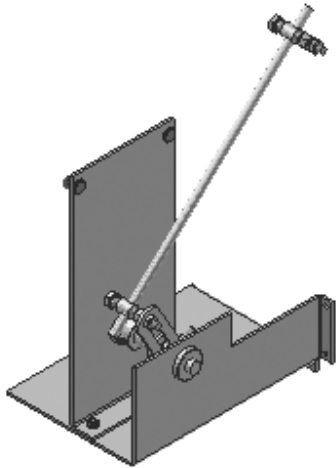
I

DESIGNATION	RUSKIN PART #	DESCRIPTION
AA	POLY 35	3/16" X 1/2" Polyurethane Foam Seals for CD45 and CD35
AA	NEOP35	3/16" X 1/2" Neoprene Seals for CD45 and CD35
A	PVC36	PVC Coated Fiberglass Seal for CD46 and CD36
E	SIL36	Silicone Coated Fiberglass Seal for CD46, CD36
C	SANPBOB60	Santoprene for Parallel and Opposed Bladed CD60
C	SILPBOB60	Silicone for Parallel and Opposed Blade CD60
F	SANBS6050	Santoprene Blade Stop for CD60, CD50, CD40, CD40X2
C	SANPBOB50	Santoprene for Parallel and Opposed Bladed CD50, 40 and 40X2
D	SANPBOBT150	Santoprene for Parallel and Opposed Blade CDT150/BF
B	SANBST150	Santoprene Blade Stop Seal for CDT150/BF
I	VNLTRIMT150	Vinyl Trim Blade Seal for CDT150/BF
C	SILPBOB50	Silicone Parallel and Opposed Blade CD50
B	SILBS50	Silicone Blade Stop Seal for CD50
G	SILFSD60	Blade Stop for Opp & Par CD60 w/Silicone Seals

\*All stated specifications are subject to change without notice or obligation.

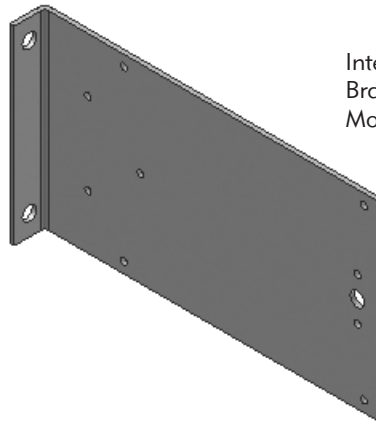
# Actuator Brackets

## MODEL – MBH2000IN



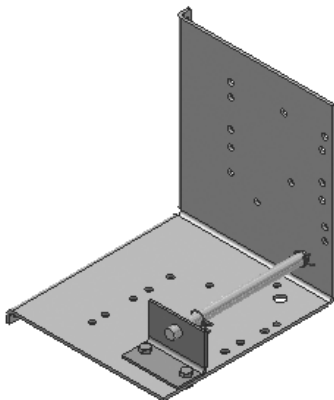
Internal Mount  
Bracket for:  
H2000, H2024,  
MS8209, MS4209  
Actuators

## MODEL – MBBELGAIN



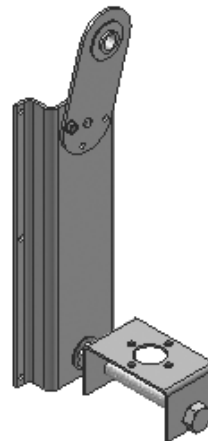
Internal Mount  
Bracket for Direct  
Mount Actuators

## MODEL – UMBPIN



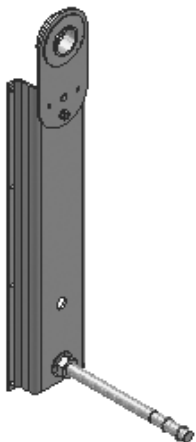
Internal Mount  
Bracket for: 331-4827,  
331-2961, 331-3060  
Pneumatic Actuators

## MODEL – MBP4827OUT



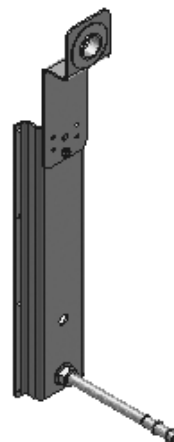
External Mount  
Bracket for: 331-4827  
Pneumatic Actuators

## MODEL – MBP2961OUT



External Mount  
Bracket for: 331-2961  
Pneumatic Actuator

## MODEL – MBP3060OUT

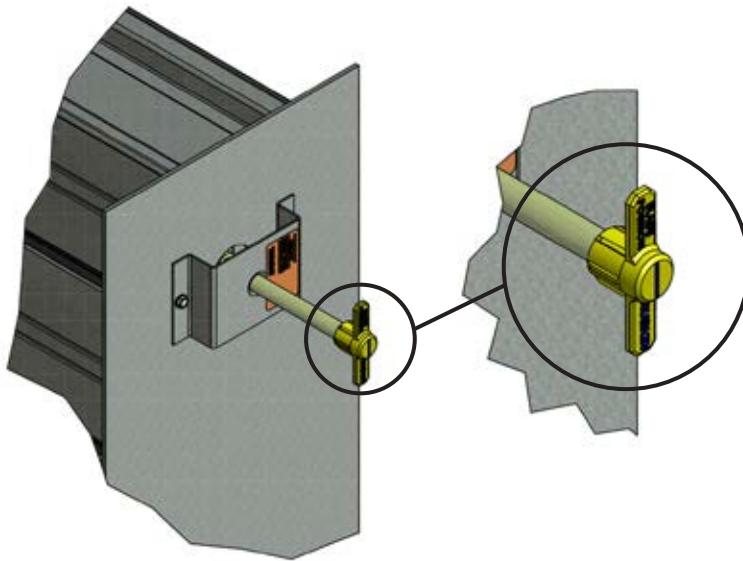


External Mount  
Bracket for: 331-3060  
Pneumatic Actuator

*\*All stated specifications are subject to change without notice or obligation.*

# Blade Position Indicators

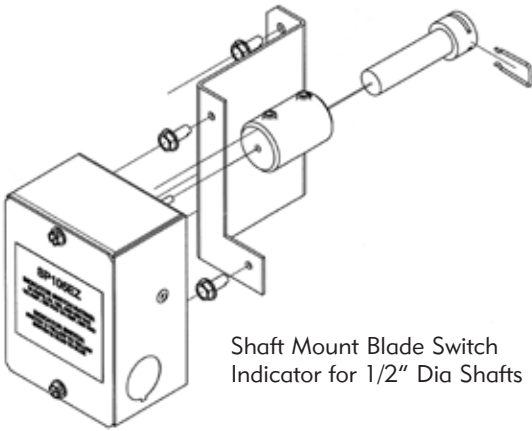
## MODEL – RBPI100



Ruskin Blade Position Indicator  
Fits on 1/2" Dia, 3/8" Sq  
and 1" Dia Shafts

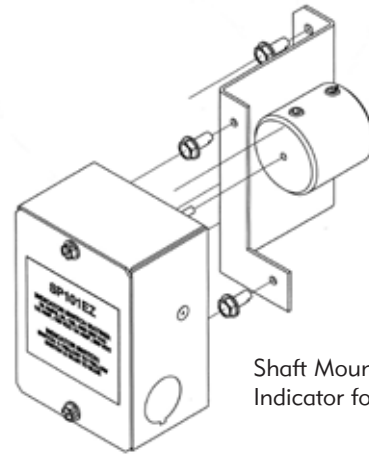


## MODEL – SP105



Shaft Mount Blade Switch  
Indicator for 1/2" Dia Shafts

## MODEL – SP101



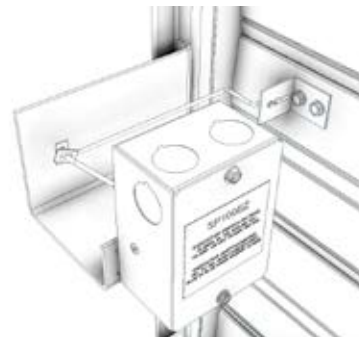
Shaft Mount Blade Switch  
Indicator for 1" Dia Shafts

## MODEL – SP100EZ



Blade Mount  
Switch Indicator  
(Switch Only)

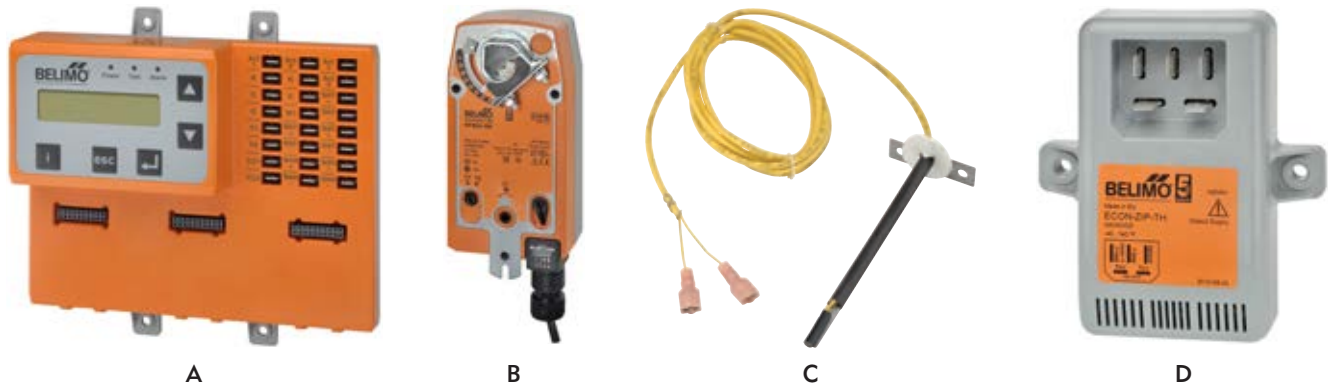
## MODEL – SP100FK



Blade Mount  
Switch Indicator  
Kit w/Brackets  
and Hardware

\*All stated specifications are subject to change without notice or obligation.

# Economizer Controls



The pictures above represent the standard replacement parts for Ruskin model CD60ECON Economizer. The CD60ECON controls are provided by Belimo to Ruskin specifications and are modular in design, facilitating a “plug and play” installation. The economizer control logic board (A) includes an extended temperature LCD display, with on board help, providing information through every step of the setup process. Through automated fault detection and diagnostics, the logic board troubleshoots faults, initiates alarms, and reconfigures for best operation. The standard economizer control package provides the most common economizer functions; two stages of mechanical cooling, integrated cooling, four change-over strategies for free cooling, and damper position feedback. Ruskin furnishes and mounts actuators (B) specific to the application and factory commissioning is performed prior to shipping. It is paramount that the CD60ECON actuators are replaced with the same “RUS” series model. Likewise, the enthalpy sensor (D) and temperature sensor (C) complete the package and should be replaced with the same parts. If the CD60ECON is ordered with the standard dry bulb sensors (C) and it becomes necessary to use a single or dual enthalpy control strategy, contact Ruskin for support prior to ordering replacement parts.

MODEL	SYMBOL	DESCRIPTION
ECON-LB	A	Economizer control logic board
LF24SR-RUS	B1	Economizer actuator damper area up to 6 sq. ft.
NFB24-SR-RUS	B2	Economizer actuator damper area up to 18.5 sq. ft.
AFB24-SR-RUS	B3	Economizer actuator damper area up to 30 sq. ft.
ECON-DBS	C	O.A., R.A., and S.A. 10K Temperature Sensor
ECON-ES	D	O.A., and R.A. Enthalpy sensor

### Parts required for dry bulb control sequence

(Item A) Economizer control logic board, (item B) “RUS” series SR actuator (exact model and quantity based on damper area), and 3 (item C) 10K temperature sensors. Locate one sensor in the O.A., one in the R.A. flow and one in the mixed supply air location.

### Parts required for single enthalpy control sequence

(Item A) Economizer control logic board, (item B) “RUS” series SR actuator (exact model and quantity based on damper area), 1 (item D) Enthalpy sensor (located at O.A. location) and 1 (item C) 10K temperature sensor located in the mixed supply air location.

### Parts required for dual enthalpy control sequence

(Item A) Economizer control logic board, (item B) “RUS” series SR actuator (exact model and quantity based on damper area), 2 (item D) Enthalpy sensors (one at O.A. location and one at R.A. location) and 1 (item C) 10K temperature sensor located in the mixed supply air location.

*\*All stated specifications are subject to change without notice or obligation.*

***RUSKIN***<sup>®</sup>

***Air & Sound Control***  
***Specified by Many – Equaled by None***

3900 Dr. Greaves Rd., Kansas City, MO 64030  
(816) 761-7476 Fax (816) 765-8955  
Email: [ruskin@ruskin.com](mailto:ruskin@ruskin.com)