



3900 Dr. Greaves Rd.
Kansas City, MO 64030
(816) 761-7476
FAX (816) 765-8955
www.ruskin.com

**FIELD ASSEMBLY
AND
INSTALLATION INSTRUCTIONS
FOR
EXTRUDED ALUMINUM
STATIONARY LOUVERS**

TABLE OF CONTENTS

Pg.	Description
2&3	Instructions
4	Visible Mullion Exploded Drawing
5	Architectural Style Exploded Drawing
6	Vertical Visible Mullion Bolted Connection 70-020143-00B
7	Vertical Frame Connection (2" x 4" Plates) 70-020258-00B
8	Horizontal Visible Mullion Connection 70-020904-00B
9	Horiz./Vert. Visible Mullion Connection 70-020300-00B
10	Blade Support (HVBS) Splice 70-020163-00B
11	Architectural Vertical Mullion Connection 70-020162-00B
12	Architectural Horiz./Vert. Mullion Connection 70-020164-00B
13	Perimeter Frame Splice 70-020165-00B
14	Recessed Vertical Mullion Connection 60-021807-00B
15	Extended Sill Joint Detail 60-021808-00B
16	Typical Louvered Door Detail 60-021338-00B

FIELD ASSEMBLY AND INSTALLATION INSTRUCTIONS FOR EXTRUDED ALUMINUM STATIONARY BLADE LOUVERS

This booklet is provided to offer basic assembly and installation instructions for standard Ruskin extruded aluminum stationary blade louvers. While these instructions should be useful for most standard models and applications, "special" louver designs or installation conditions may not be covered. If job-specific submittal/shop drawings were generated for the order, refer to them for special field assembly and installation details. Ruskin louvers are designed to withstand 20 psf windloads unless otherwise instructed. Since Ruskin louvers may be installed in a variety of substrates, installation fasteners to anchor the louver to the substrate are typically not designed or provided by Ruskin. Consult the Engineer of Record on your project for the size, type and quantity of fasteners required.

RECEIVING/INSPECTION

Upon delivery, inspect shipping containers and contents closely. If shipping containers are damaged, contents could also be damaged. Note any damage on trucker's delivery receipt. Contact the freight company within 24 hours for inspection. All products are shipped f.o.b. Ruskin plant; receiver of the shipments is responsible for filing freight claims with the freight company.

STORAGE

Store in an orderly manner at a safe location away from construction traffic, material, etc. to prevent damage. Cover with plastic sheeting to protect from excessive moisture, dirt and debris.

DRAWING EXPLANATION

This booklet contains several drawings that are provided for use in field assembly of multiple section louvers. Field assembly generally consists of joining frames and hidden vertical blade supports (HVBS) together. The style of construction dictates what type and how many of these joint connections are required. Ruskin extruded stationary blade louvers are constructed in two typical construction types: Visible Mullion and Architectural Style. Visible Mullion construction is typical with most drainable blade models. This construction utilizes perimeter frames and side frames on all louver sections. They may or may not have intermediate top and bottom frames on all sections. Architectural Style construction is typical with most non-drainable models. This construction utilizes frames only at the perimeter of the louver. Frames are not used on intermediate section joints. Both construction types typically utilize intermediate HVBS members within individual sections for windload support.

After the assembly and installation sections, exploded views of Visible Mullion and Architectural Style construction louvers with detail drawing callouts are provided. Following the exploded drawings are the detail drawings they reference which depict the louver frame and HVBS connections required for each. Identify which type of louver construction applies to your order and utilize the appropriate details to assemble the louvers.

PRE-ASSEMBLY

1. Remove louvers and accessories from shipping containers and inspect for damage. Single section units will be shipped fully assembled. Multiple section units will be shipped in shipping sections to be assembled at the job site. Large multiple section units may be packaged in more than one shipping crate. Reference the crate identification tags and bill of lading to determine crate contents. Care must be taken when handling components. Lift louver sections carefully by the supports or frames; avoid lifting by the louver blades. Do not apply excessive force to any one point of the section. Lift at multiple points, if necessary, to avoid deformation or racking of components.
2. Inspect louvers and components after removal from containers. Verify that all components and fasteners are accounted for. Use the exploded drawings and details found in this booklet to identify parts. Report any shortages immediately to the Ruskin plant that manufactured the louver(s).
3. Inspect the openings that the louvers will be installed in. Verify that the openings are square and that the unit will fit prior to installation. Check available installation depth for possible HVBS interference. **IF HVBS must be notched or modified for installation, secure the HVBS to a suitable substrate as close to the modification as possible to maintain structural integrity.** Contact your local Ruskin representative if you have questions pertaining to this or other field modifications.

SINGLE SECTION INSTALLATION

1. Install head and/or extended sill flashing in opening, if applicable (fasteners not provided by Ruskin). Caulk the heads of penetrating fasteners and any flashing joints.
2. If perimeter clip or continuous angles are utilized in installation, locate and anchor them in the opening.
3. Place the louver assembly in the opening.
4. Using shims, level the louver assembly both horizontally and vertically in the opening (shims are not provided by Ruskin). Position the louver in the opening so that the desired sealant joint will be maintained around the perimeter.
5. When louver is level and in proper position, install fasteners through the installation angles into the louver. If the louver is to be installed with fasteners through the frames into substrate or with glazing adapters into window frames, make these connections now.
6. After louver is secured, install backer rod and sealant around louver perimeter (backer rod and sealant is not provided by Ruskin).

MULTIPLE SECTION ASSEMBLY/INSTALLATION

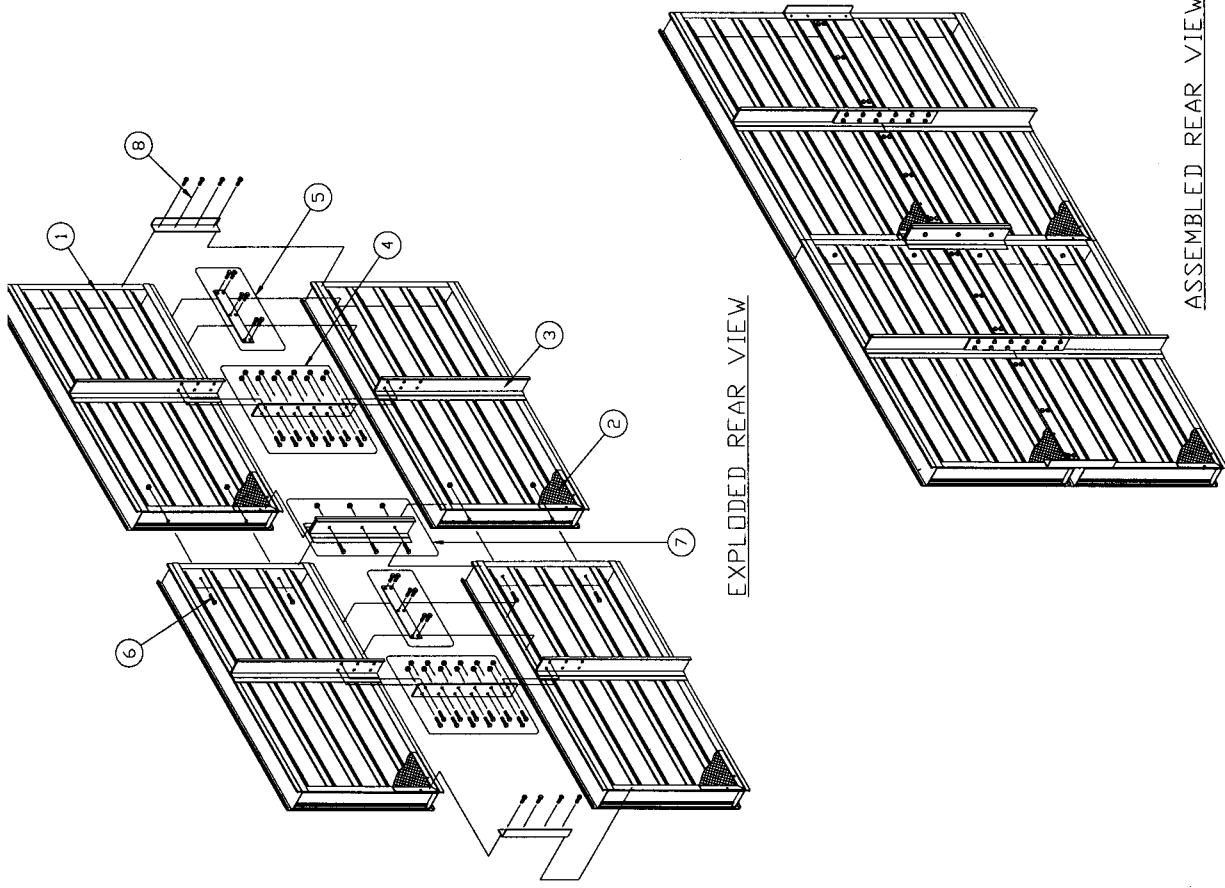
1. Install head and/or extended sill flashing in opening, if applicable (fasteners not provided by Ruskin). Long lengths of flashing will be provided in sections. Apply a continuous bead of caulk at heads of penetrating fasteners and any section seam where moisture could seep.
2. Locate loose-shipped hardware required for louver assembly.
3. Position the louver sections face down on a level, non-abrasive surface in the configuration they will be assembled in. Reference the tag numbers on each section to ensure the sections are in the correct order.
4. Fasten the sections together at the frame and HVBS joints. Refer to appropriate exploded and detail drawings in this booklet for splice hardware identification and location.
5. If perimeter clip or continuous angles are utilized in installation, locate and anchor them in the opening.
6. Carefully lift the assembled louver and place it in the opening. **Be careful to lift by frames and HVBS members only; do not lift by louver blades.**
7. Using shims, level the louver assembly both horizontally and vertically in the opening (shims are not provided by Ruskin). Position the louver in the opening so that the desired sealant joint will be maintained around the perimeter.
8. On architectural style units, check blade alignment at the vertical joints. Loosen section-connecting hardware and adjust the position of the sections as required to achieve good blade-to-blade alignment. When alignment is complete, tighten all section-connecting hardware.
9. When louver is level and in proper position, install fasteners through the installation angles into the louver. If the louver is to be installed with fasteners through the frames into substrate or by glazing adapters into window frames, make these connections now.
10. After louver is secured, install backer rod and sealant around louver perimeter (backer rod and sealant is not provided by Ruskin). Also apply backer rod and sealant at section joints where possible.

LEGEND

- ① LOUVER SECTION
- ② BIRD OR INSECT SCREEN (PARTIAL VIEW)
- ③ HIDDEN VERTICAL BLADE SUPPORT (H.V.B.S.)
- ④ HVBS SPLICE PLATE & FASTENERS, REF. DETAIL 163
- ⑤ HORIZONTAL FRAME SPLICE PLATE & FASTENERS, REF. DETAIL 904
- ⑥ VISIBLE VERTICAL MULLION SPLICE BOLT & NUT, REF. DETAIL 143 (SEE NOTES BELOW)
- ⑦ VISIBLE VERTICAL MULLION SPLICE MEMBER & FASTENERS (2 X 2 ASSEMBLY ONLY), REF. DETAIL 300
- ⑧ PERIMETER FRAME SPLICE ANGLE & FASTENERS (BY OTHERS) REF. DETAIL 165

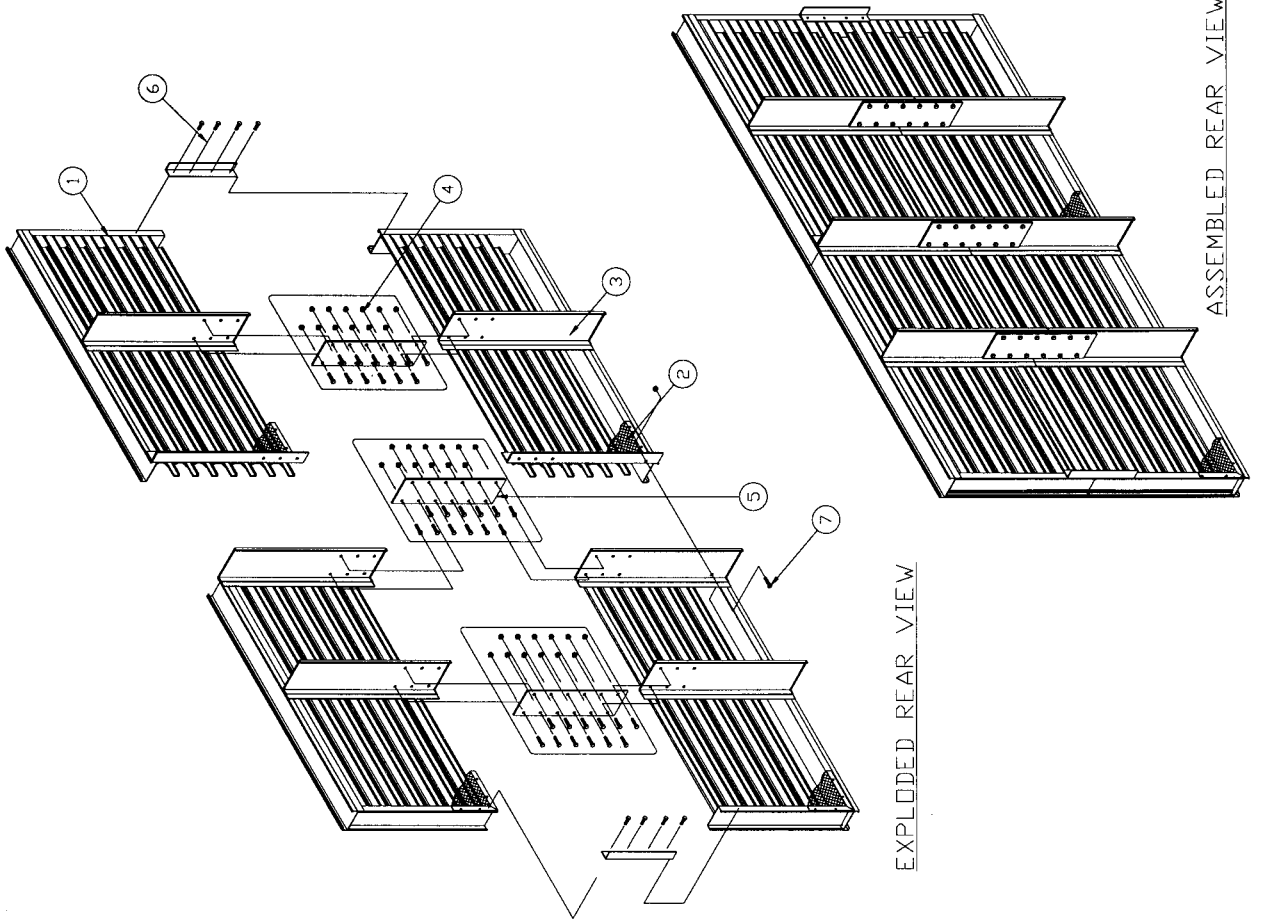
NOTES

- 1) THE DETAIL NUMBERS REFERENCED ABOVE CORRESPOND WITH THE LAST THREE(3) DIGITS IN THE APPLICABLE DETAIL DRAWINGS IN THIS BOOKLET.
EXAMPLE: 163 ABOVE = DWG. #70-020163-00B
- 2) FOR LOUVERS WITH BLADE CENTER TO CENTER SPACING OF 2' OR LESS, AND ALL CHEVRON STYLE MODELS, FRAME SPLICE PLATES & FASTENERS (REF. DETAIL 258) WILL BE PROVIDED IN PLACE OF MULLION SPLICE BOLTS.



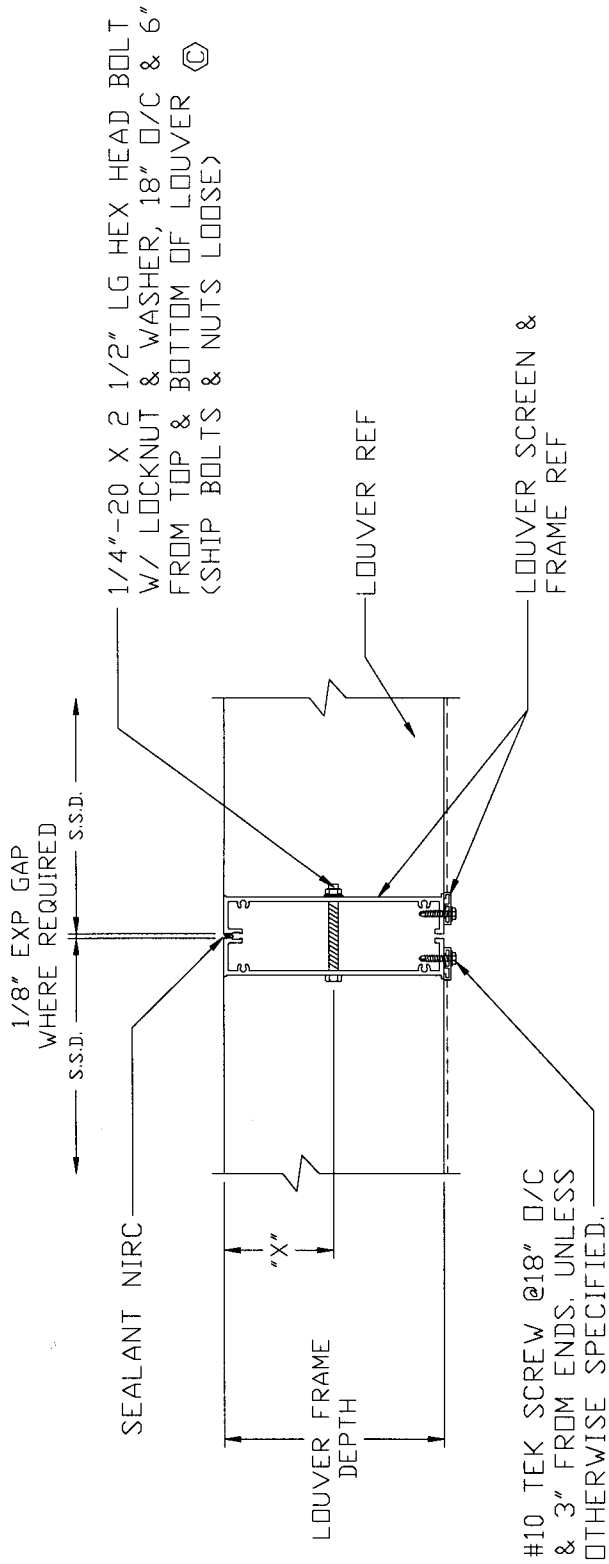
LEGEND

- ① LOUVER SECTION
- ② BIRD OR INSECT SCREEN (PARTIAL VIEW)
- ③ HIDDEN VERTICAL BLADE SUPPORT (H.V.B.S.)
- ④ HVBS SPLICE PLATE & FASTENERS, REF. DETAIL 163
- ⑤ HVBS VERTICAL & HORIZONTAL SPLICE PLATE & FASTENERS, REF. DETAIL 164.
- ⑥ PERIMETER FRAME SPLICE. ANGLE & FASTENERS (BY OTHERS) REF. DETAIL 165
- ⑦ ARCHITECTURAL JOINT CONNECTION BOLT, REF. DETAIL 162



NOTES

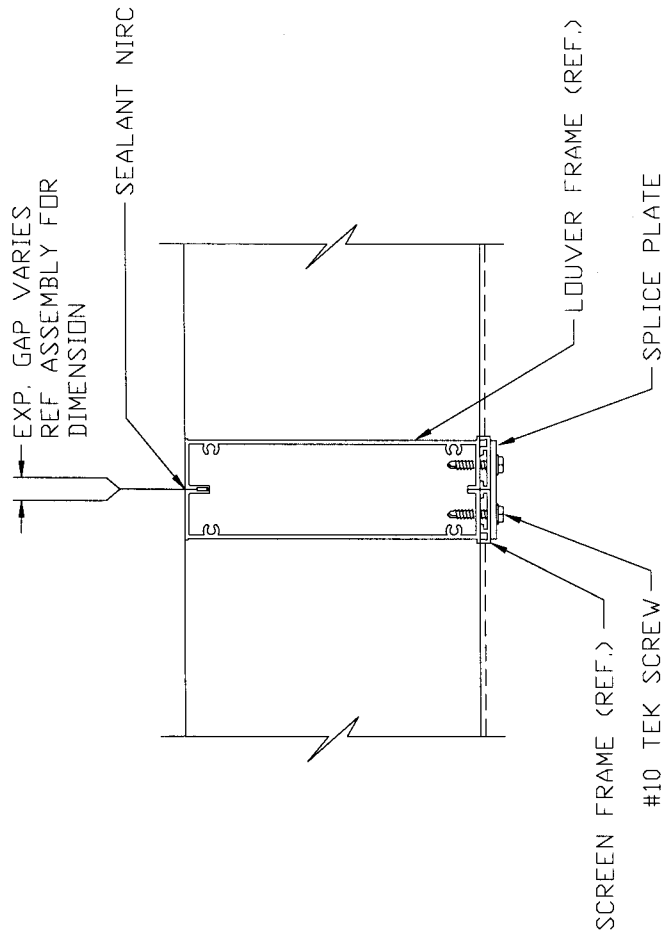
- 1) THE DETAIL NUMBERS REFERENCED ABOVE CORRESPOND WITH THE LAST THREE(3) DIGITS IN THE APPLICABLE DETAIL DRAWINGS IN THIS BOOKLET.
EXAMPLE: 163 ABOVE = DWG. #70-020163-00B
- 2) FOR LOUVERS WITH BLADE CENTER TO CENTER SPACING OF 2" OR LESS, AND ALL CHEVRON STYLE MODELS, FRAME SPLICE PLATES & FASTENERS (REF. DETAIL 258) WILL BE PROVIDED IN PLACE OF MULLION SPLICE BOLTS.



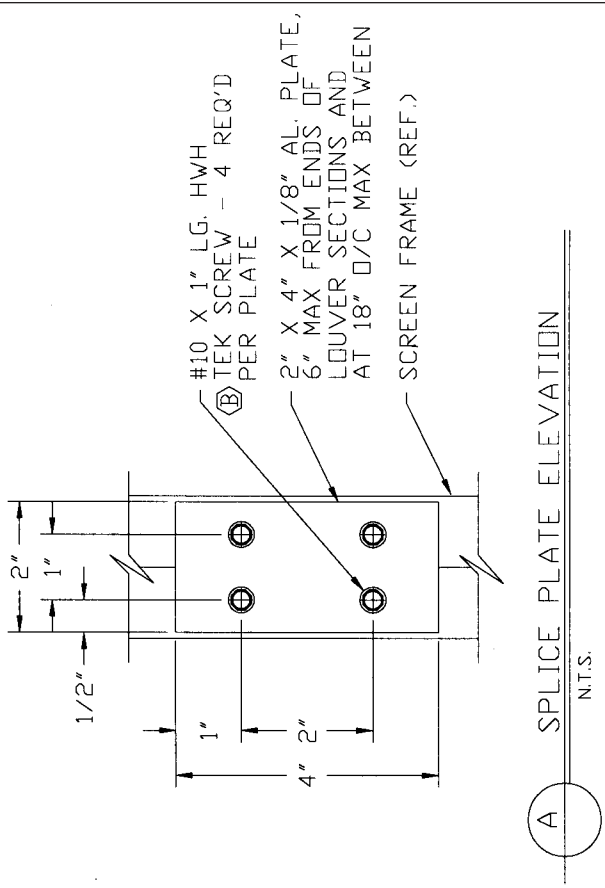
#10 TEK SCREW @18" O/C & 3" FROM ENDS, UNLESS OTHERWISE SPECIFIED.

REV. WHIZNUT TO BE LOCKNUT & WASHER	JKS	G.L.	JKS	9/11/98
REV'D JAMB FRAMES	GSL	VMA	DLH	2/17/95
ADDED TEK SCREW SPEC. *	DLH	GSL	VMA	1-3-95
CHANGE LETTER	DWN. BY:	CHK'D. BY:	APPV'D. BY:	DATE:
RUSKIN Mfg.				
air handling specialties				
3900 DR. GREAVES RD. GRANDVIEW, MO 64030				
TITLE				
EXTRUDED LOUVER				
VERTICAL MULLION				
BOLTED CONNECTION				
PLOT SCALE				DWG. CERTIFIED
NONE				BY: _____
DWG. NO.				DATE: _____
70-020143-00B				

DWN. BY:	CHK. BY:	APPV'D. BY:
JAL	VMA	LH
DATE: 10-7-92	DATE: 03-15-93	DATE: 03-16-93



1 PLAN VIEW
N.T.S.



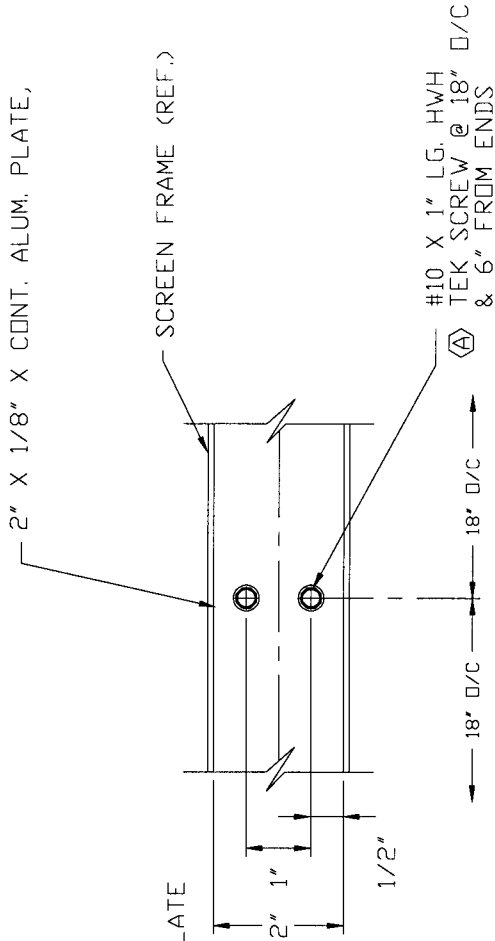
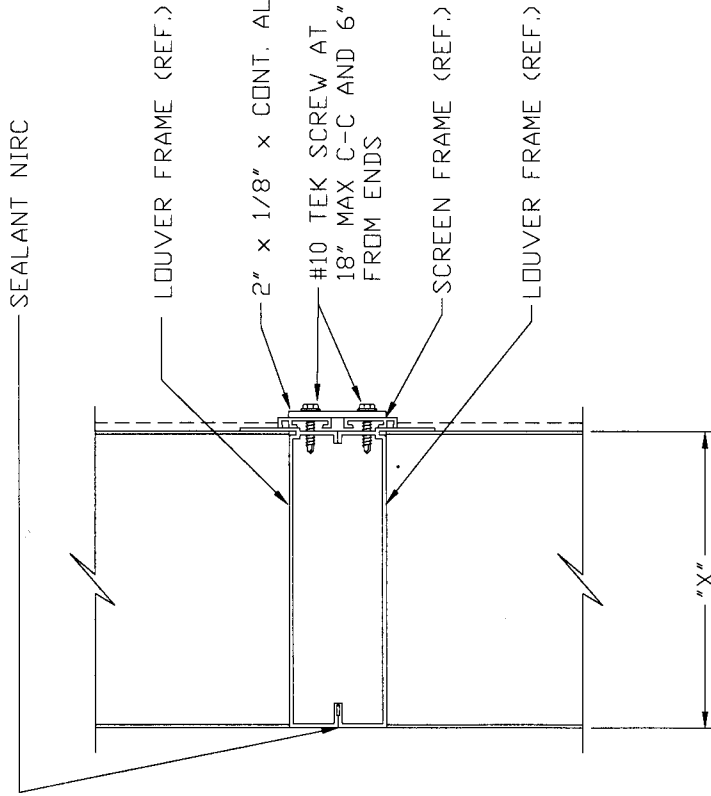
A SPLICE PLATE ELEVATION
N.T.S.

NOTES

- SCREWS MUST NOT INTERFERE WITH MOVABLE BLADE LINKAGE ON ADJUSTABLE LOUVERS.

CHANGE LETTER	REV. NOTE	GW			
A	REV'D LOUVER FRAMES	GSL			
	REVISION DESCRIPTION	DWN. BY:	CHK'D. BY:	APPV'D. BY:	DATE
	RUSKIN Mfg. air handling specialties 3900 DR. GREAVES RD. GRANDVIEW MD 64030				
TITLE	EXTRUDED LOUVER FRAME CONNECTION DETAIL	PLT. SCALE	NONE	DWG. CERTIFIED BY:	DATE:
		DWG. NO.			
					70-020258-00B

DWN. BY:	JAL	CHK. BY:	VMA	APPV'D. BY:	LH
DATE:	11-30-92	DATE:	3-15-93	DATE:	3-16-93



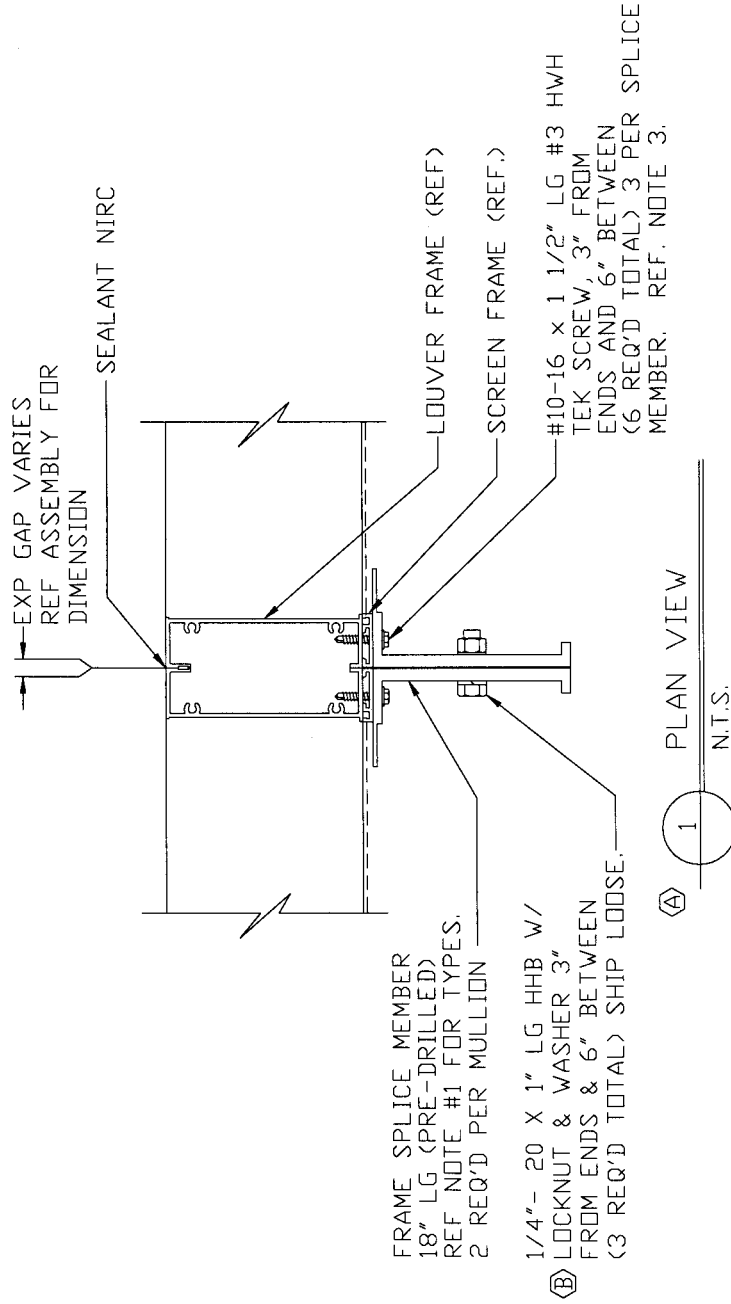
1A SPLICE PLATE ELEVATION
N.T.S.

1 VERTICAL SECTION
N.T.S.

NOTE:

1. DIMENSION "X" = LOUVER FRAME DEPTH.

CHANGE LETTER	REV. NOTE	GW	APPR'D. BY:	DATE:
(A)				
	REVISION DESCRIPTION	DWN. BY:	APPR'D. BY:	DATE:
	RUSKIN Mfg Grandview, MO			
	PROPRIETARY INFORMATION	PLOT SCALE	DWG. CERTIFIED BY:	DATE:
	TITLE	NONE		
	EXTRUDED LOUVER HORIZONTAL MULLION CONNECTION DETAIL	DWG. NO.		
		70-020904-00B		

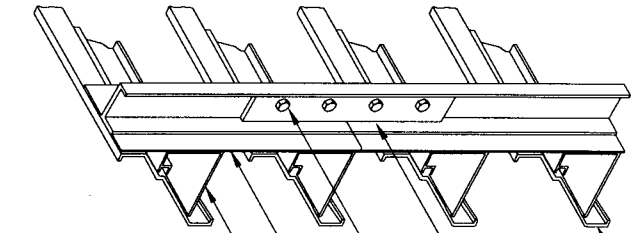


① PLAN VIEW
N.T.S.

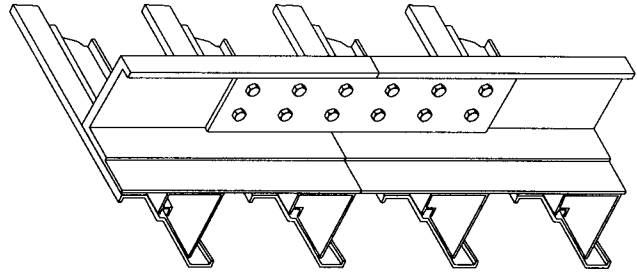
NOTES:

- ① 1. 2- 2" X 2" X 1/4" ALUM SUPPORT SPLICE ANGLES FOR 1 1/4", 1 1/2" & 2" DP. LOUVERS, 2- 70-020087-00B SUPPORT SPLICE CHANNELS FOR 3" & 4" DP. LOUVERS, AND 2- 70-020059-00B SUPPORT SPLICE CHANNELS FOR 5" & 6" DP. LOUVERS.
2. INSTALLER MUST REMOVE THE FACTORY INSTALLED SCREEN FRAME SCREWS PRIOR TO INSTALLING SPLICE MEMBERS.
3. ON MOVABLE LOUVERS LOCATE SCREWS TO AVOID INTERFERENCE W/CONCEALED LINKAGE.

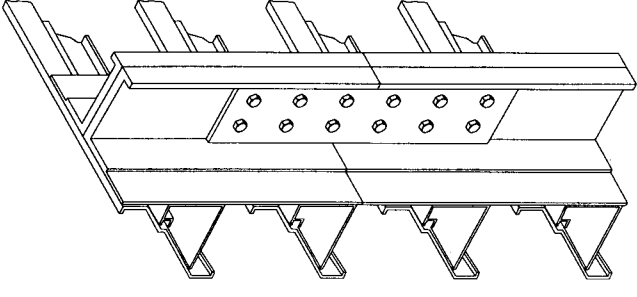
②	REV. SERRATED FLG. NUT TO BE LOCKNUT & WASHER	KDH	G.L.	JKS	9/11/98
③	REV'D FRAMES & SPLICE SUPPORTS	GSL	VMA	DLH	2/17/95
CHANGE LETTER	REVISION DESCRIPTION	DWN. BY:	CHK'D. BY:	APPV'D. BY:	DATE:
RUSKIN Mfg. air handling specialties 3900 DR. GREAVES RD. GRANDVIEW, MD. 64030		PLOT SCALE		DWG. CERTIFIED	
TITLE		NONE		BY: _____ DATE: _____	
EXTRUDED LOUVER VISIBLE MULLION SPLICE DETAIL		DVG. NO.		70-020300-00B	



TEE HVBS SPlice



SINGLE CHANNEL HVBS SPlice



DOUBLE CHANNEL HVBS SPlice

- BLADE BRACE (REF)
- HIDDEN VERTICAL BLADE SUPPORT(S)
- HEX HEAD BOLT W/ LOCKNUT & WASHER
- SPlice PLATE (SHIP LOOSE)

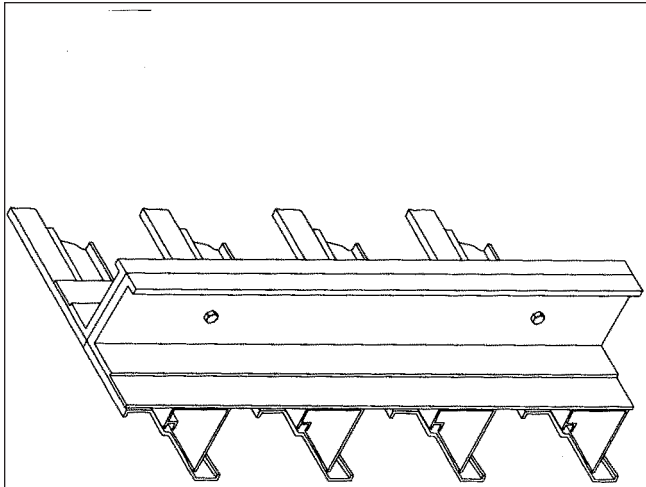
LOUVER BLADE (REF)

NOTES

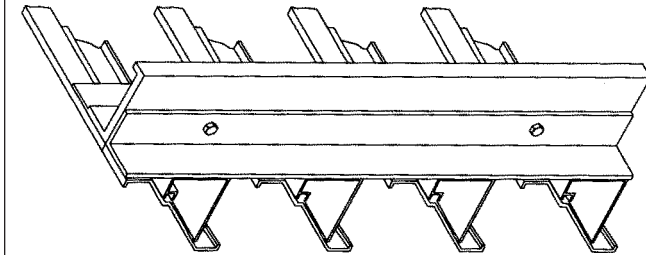
1. HVBS = HIDDEN VERTICAL BLADE SUPPORT.
2. REF ORDER OR DWGS FOR HVBS TYPE, OR INSPECT LOUVER ASSEMBLIES.
- REF DETAIL DWGS BELOW FOR SPlice PLAN VIEW AND SPlice PLATE PART DWGS.

BLADE SUPPORT (HVBS) TYPE	DETAIL DWG #
(1) 70-020097-00B 3" TEE	70-020166-00B
(1) 70-020088-00B 3" CHANNEL	70-020167-00B
(1) 70-020087-00B 4" CHANNEL	70-020168-00B
(1) 70-020059-00B 6" CHANNEL	70-020169-00B
(2) 70-020088-00B 3" CHANNELS	70-020170-00B
(2) 70-020087-00B 4" CHANNELS	70-020171-00B
(2) 70-020059-00B 6" CHANNELS	70-020172-00B
3" & 4" CHANNELS	70-020173-00B
3" & 6" CHANNELS	70-020174-00B
4" & 6" CHANNELS	70-020175-00B

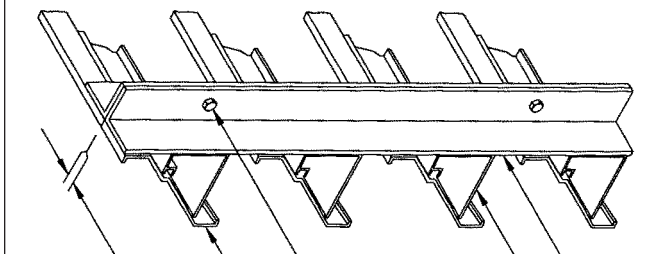
(B)	REV. FLANGENUT TO BE LOCKNUT & WASHER	JKS	G.L.	JKS	9/11/98
(A)	REV'D TITLE BLOCK & REMV'D DWG 70-020255-00B	JKS	G.L.	VMA	2/20/95
CHANGE LETTER	REVISION DESCRIPTION	DWN BY:	CHK'D BY:	APPV'D BY:	DATE
RUSKIN Mfg Air Handling specialties 3900 DR. GREAVE'S RD. GRANDVIEW MO 64030		PLOT SCALE		DWG. CERTIFIED	
TITLE		NONE		BY: DATE:	
1X2 VERT ARCH STYLED SPlice CONFIG. FOR EXTRUDED LOUVERS		DWG. NO.		70-020163-00B	



DOUBLE CHANNEL HVBS



SINGLE CHANNEL HVBS



ANGLE HVBS

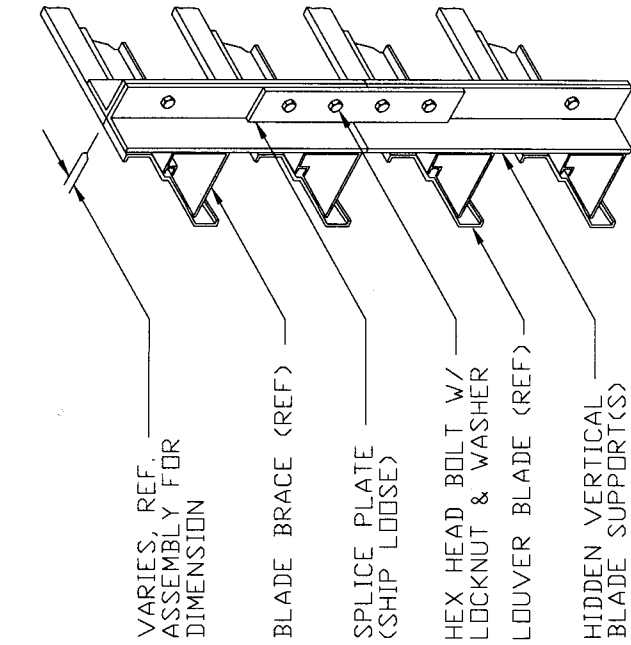
- VARIES, REF. ASSEMBLY FOR DIMENSION
- LOUVER BLADE (REF)
- 1/4"-20 X 1" HEX HEAD BOLT W/ LOCKNUT & WASHER, 3" MAX FROM TOP AND BOTTOM OF LOUVER SECTIONS & AT 18" O/C MAX BETWEEN
- BLADE BRACE (REF)
- HIDDEN VERTICAL BLADE SUPPORT(S) (& ANGLE WHERE REQ, SEE NOTE 2)

NOTES

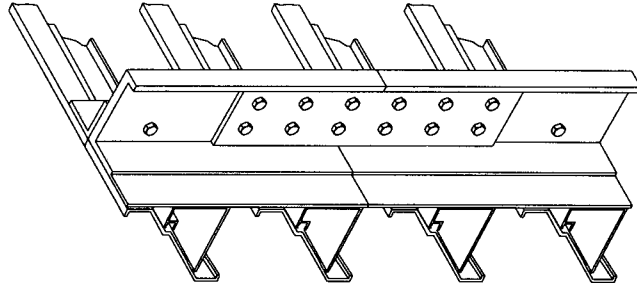
1. HVBS = HIDDEN VERTICAL BLADE SUPPORT.
2. REF ORDER OR DWGS FOR HVBS TYPE, OR INSPECT LOUVER ASSEMBLIES. REF DETAIL DWGS BELOW FOR BOLT LOCATION DIMENSIONS (PLANT ONLY).
3. LOUVERS WITH SINGLE ANGLE OR CHANNEL HVBS SHALL HAVE AN ANGLE ON ONE SIDE OF THE SHIP SECTION TO CONNECT WITH HVBS.
4. PLACE EXPANSION GAP SHIMS BETWEEN HVBS MEMBERS AND/OR ANGLES AT SHIP SECTIONS WHERE REQ. (SHIMS BY OTHERS)

BLADE SUPPORT (HVBS) TYPE	DETAIL DWG #
2" X 2" 1/8" ALUM ANGLE	70-020466-00B
(1) 70-020088-00B 3" CHANNEL	70-020177-00B
(1) 70-020087-00B 4" CHANNEL	70-020178-00B
(1) 70-020059-00B 6" CHANNEL	70-020179-00B
(2) 70-020088-00B 3" CHANNELS	70-020180-00B
(2) 70-020087-00B 4" CHANNELS	70-020181-00B
(2) 70-020059-00B 6" CHANNELS	70-020182-00B
3" & 4" CHANNELS	70-020183-00B
3" & 6" CHANNELS	70-020184-00B
4" & 6" CHANNELS	70-020185-00B

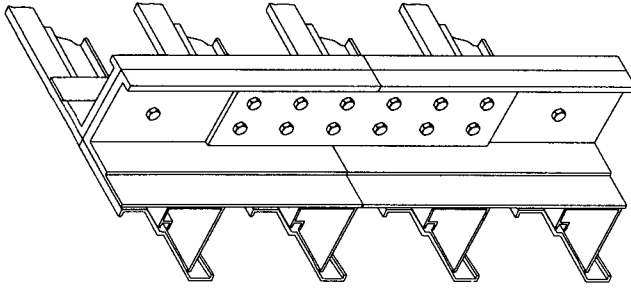
(B)	REV. WHIZNUT TO BE LOCKNUT & WASHER	JKS	G.L.	JKS	9/11/98
(A)	REV'D TITLE & REM'D DWG 176 & ADDED DWG 466	JKS	G.L.	VMA	2/20/95
CHANGE LETTER	REVISION DESCRIPTION	DWN. BY:	CHK'D. BY:	APPV'D. BY:	DATE
RUSKIN Mfg. 617 Potomac Specialties 2900 DR. GRAVES RD. GRANDVIEW, MD. 64030 TITLE		PLOT SCALE		DWG. CERTIFIED	
		NONE		BY: DATE:	
				DWG. NO.	
2X1 HORIZ ARCH STYLED SPLICE CONFIG FOR EXTRUDED LOUVERS		70-020162-00B			



ANGLE HVBS



SINGLE CHANNEL HVBS



DOUBLE CHANNEL HVBS

(B)

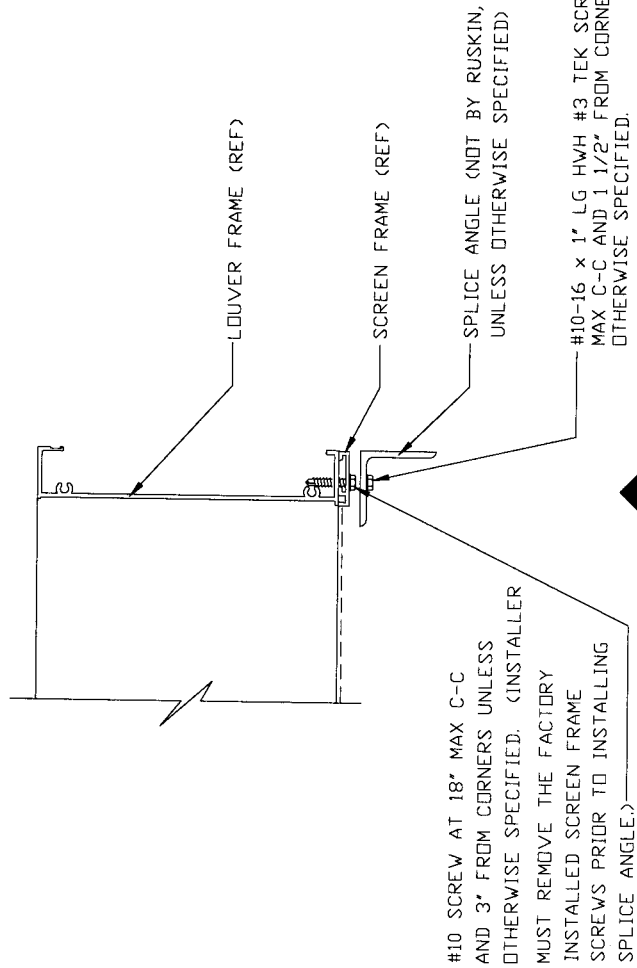
NOTES

1. HVBS = HIDDEN VERTICAL BLADE SUPPORT.
2. REF ORDER OR DWGS FOR HVBS TYPE, OR INSPECT LOUVER ASSEMBLIES. REF DETAIL DWGS BELOW FOR BOLT LOCATION DIMENSIONS (PLANT ONLY).
3. LOUVERS WITH SINGLE ANGLE OR CHANNEL HVBS SHALL HAVE AN ANGLE ON ONE SIDE OF THE SHIP SECTION TO CONNECT WITH HVBS.
4. PLACE EXPANSION GAP SHIMS BETWEEN HVBS MEMBERS AND/OR ANGLES AT SHIP SECTIONS WHERE REQ. (SHIMS BY OTHERS)

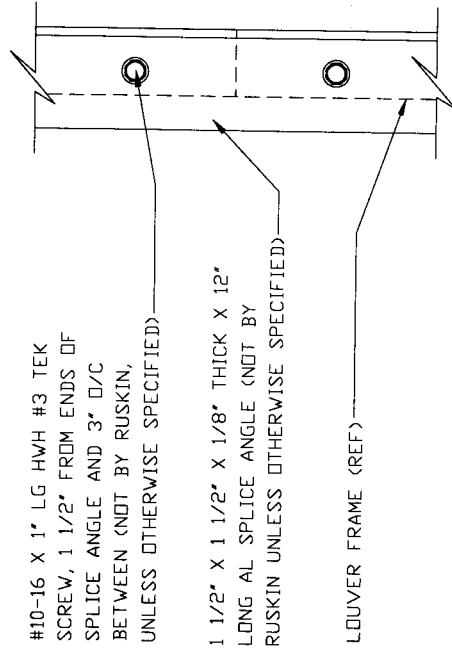
BLADE SUPPORT (HVBS) TYPE	DETAIL DWG #
(1) 70-020088-00B 3" CHANNEL	70-020273-00B
(1) 70-020087-00B 4" CHANNEL	70-020274-00B
(1) 70-020059-00B 6" CHANNEL	70-020275-00B
(2) 70-020088-00B 3" CHANNELS	70-020276-00B
(2) 70-020087-00B 4" CHANNELS	70-020277-00B
(2) 70-020059-00B 6" CHANNELS	70-020278-00B
3" & 4" CHANNELS	70-020279-00B
3" & 6" CHANNELS	70-020280-00B
4" & 6" CHANNELS	70-020281-00B

(A)

CHANGE LETTER	REVISION DESCRIPTION	DWN. BY:	CHK'D. BY:	APPV'D. BY:	DATE
(B)	REV. FLANGENUT TO BE LOCKNUT & WASHER	JKS	G.L.	JS	9/11/98
(A)	REV'D TITLE BLOCK & REMV'D DWG 70-020272-00B	JKS	G.L.	VMA	2/20/95
RUSKIN Mfg. <i>air handling specialties</i> 3900 DR. GREAVES RD. GRANDVIEW, MD. 64030.					
TITLE: 2X2 HORIZ/VERT ARCH STYLED SPLICE CONFIG FOR EXTRUDED LOUVERS					
DWG. NO.: 70-020164-00B					



1 PLAN VIEW
N.T.S.

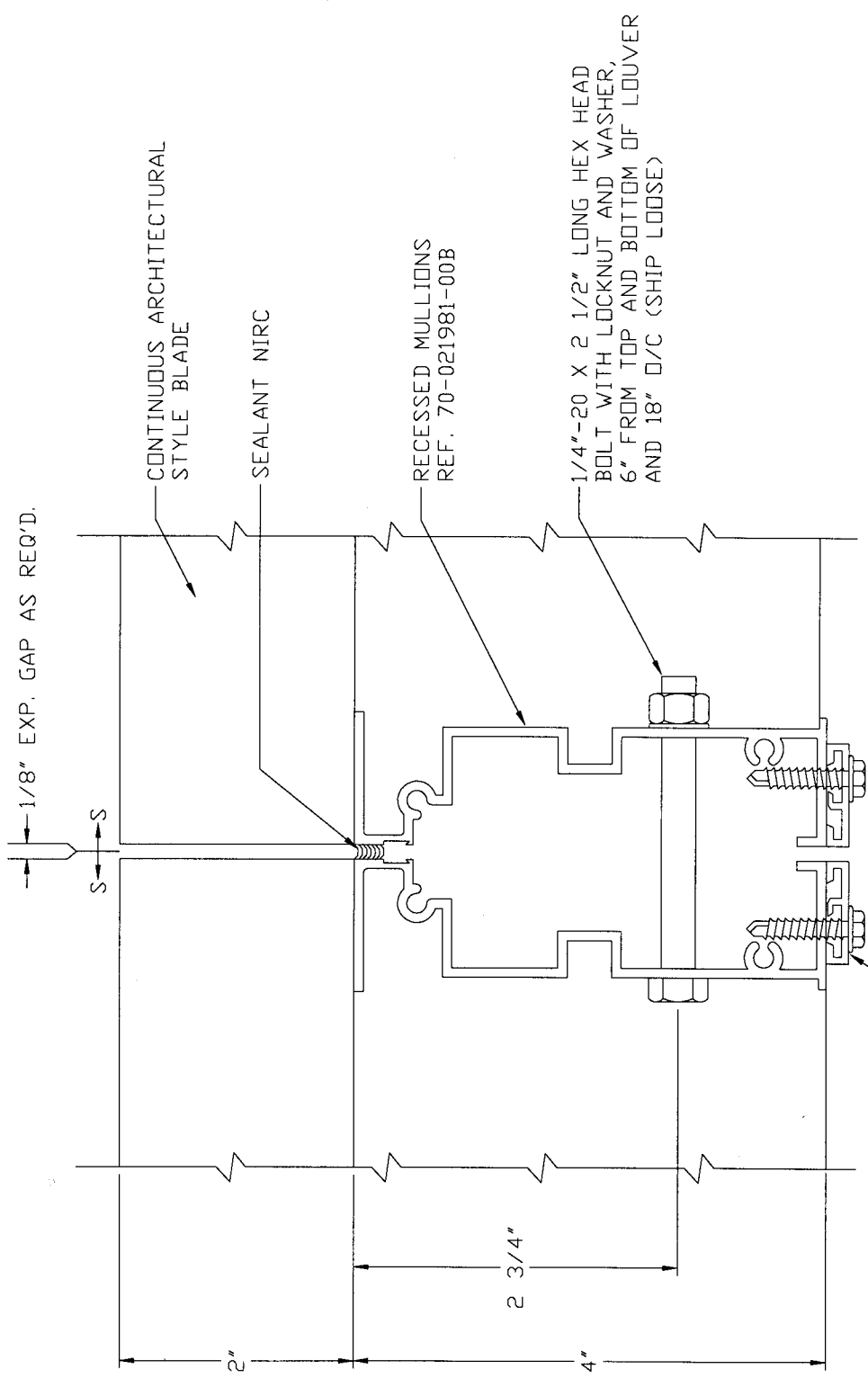


A SPLICE ANGLE ELEVATION
N.T.S. SCREEN AND SCREEN FRAME
NOT SHOWN FOR CLARITY

NOTES:

1. INSTALLER MUST REMOVE THE FACTORY INSTALLED SCREEN FRAME SCREWS PRIOR TO INSTALLING SPLICE ANGLE.

(C)	REV'D SPLICE ANGLE LENGTH	GSL	VMA	JKS	3-31-97
(B)	REV'D LOUVER FRAME	GSL	VMA		2-20-95
(A)	ADDED TEK SCREW CALL-OUT	DLH	GSL	VMA	1-3-95
CHANGE LETTER	REVISION DESCRIPTION	DWN BY:	CHK'D BY:	APPV'D BY:	DATE
	RUSKIN Mfg. <i>air handling specialties</i> 3900 DR. GREAVES RD. GRANDVIEW, MO. 64030				
TITLE		PLOT SCALE		DWG. CERTIFIED	
EXTRUDED LOUVER FRAME SPLICE DETAIL		NONE		BY: DATE:	
		DVG. NO.		70-020165-00B	



1/8" EXP. GAP AS REQ'D.

CONTINUOUS ARCHITECTURAL
STYLE BLADE

SEALANT NIRC

RECESSED MULLIONS
REF. 70-021981-00B

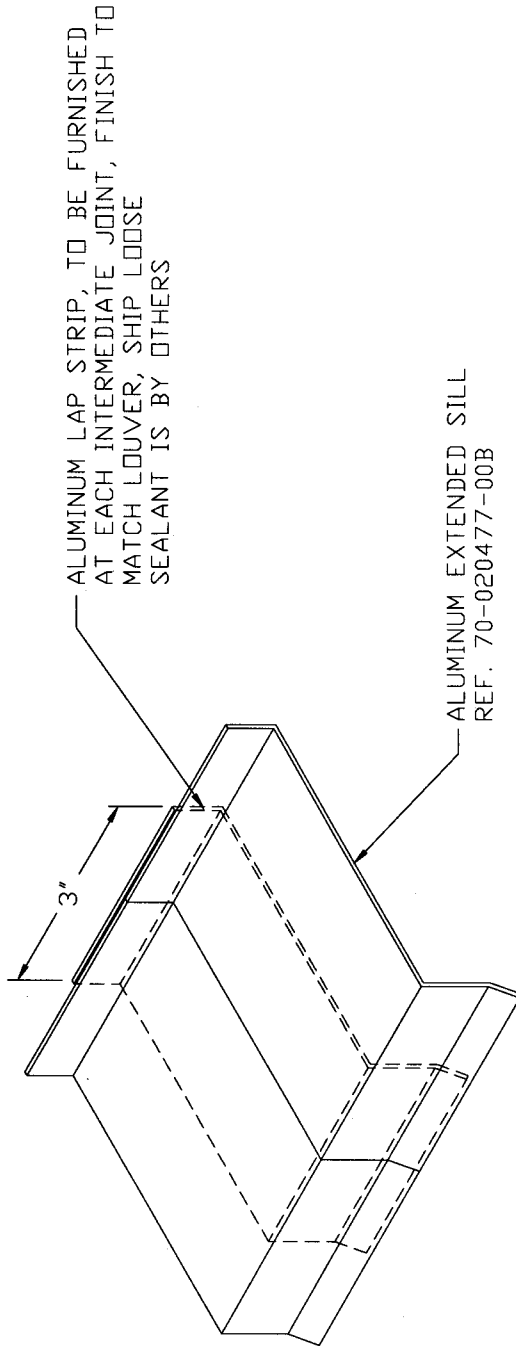
1/4"-20 X 2 1/2" LONG HEX HEAD
BOLT WITH LOCKNUT AND WASHER,
6" FROM TOP AND BOTTOM OF LOUVER
AND 18" O/C (SHIP LOOSE)

LOUVER SCREEN FRAME AS REQ'D.
ATTACH WITH #10 TEK SCREWS,
3" FROM ENDS AND 18" O/C
UNLESS OTHERWISE SPECIFIED

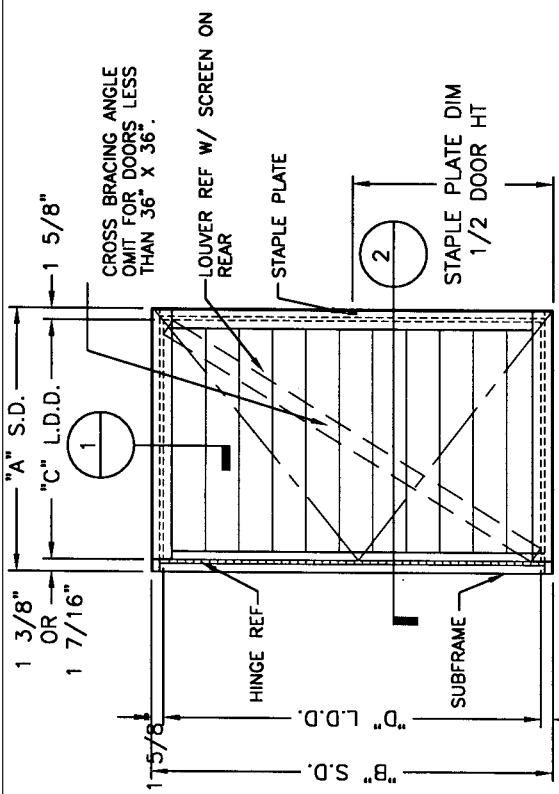
CHANGE LETTER	REVISION DESCRIPTION	DWN. BY:	CHK'D. BY:	APPV'D. BY:	DATE
	RUSKIN Mfg. air handling specialties 3900 DR. GRAVES RD. GREENVIEW, MD. 64030				
	TITLE	DVG. NO. 60-021807-00B			
	ELF6425DD LOUVER RECESSED MULLIONS CONNECTION DETAIL	DVG. NO. 60-021807-00B			

DWN. BY: GW	CHK. BY:	APPV'D. BY:
DATE: 1-4-02	DATE:	DATE:

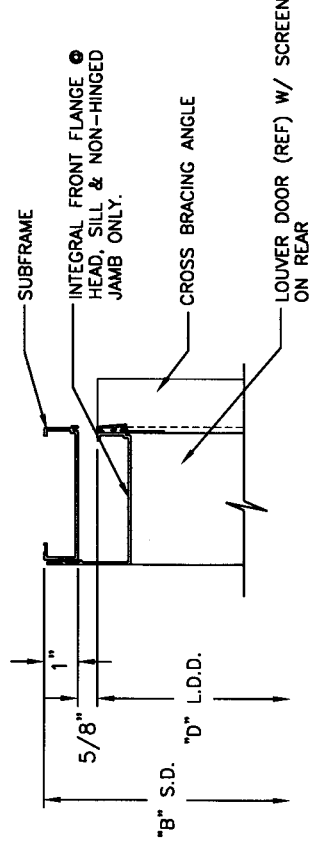
PLOT SCALE	DWG. CERTIFIED
1" = 1"	BY: DATE:



DWN. BY: GW DATE: 1-4-02	CHK. BY: GW DATE:	APPV'D. BY: GW DATE:	APPV'D. BY: GW DATE:	DWN. BY:	CHK'D. BY:	APPV'D. BY:	DATE:
CHANGE LETTER				REVISION DESCRIPTION			
RUSKIN <i>Mfg</i> Grandview, MO PROPRIETARY INFORMATION				PLOT SCALE NONE			
TITLE EXTENDED SILL INSTALLATION DETAIL AT JOINT				DWG. NO. 60-021808-00B			



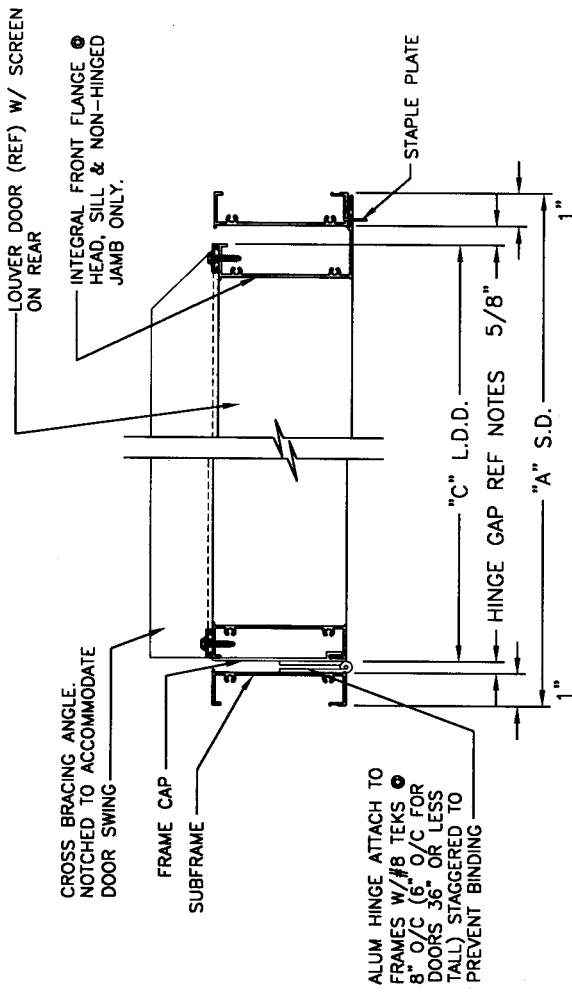
DOOR ASSEMBLY
NTS
FRONT VIEW



HEAD DETAIL (SILL SIM)
NTS

NOTES:

- 1) DIMENSIONS SHOWN ARE ACTUAL SIZE.
- 2) CONTRACTOR TO VERIFY SIZE & CONFIGURATION PRIOR TO FABRICATION
- 3) IF LOUVER DOOR IS ADJACENT TO STATIONARY LOUVER SECTIONS, THEN BLADES IN LOUVER DOOR ARE TO ALIGN W/ FIXED LOUVER SECTIONS
- 4) MIRC = NOT IN RUSKINS CONTRACT
S.D. = SUBFRAME DIMENSION
L.D.D. = LOUVER DOOR DIMENSION



HORIZONTAL SECTION
NTS

HINGE NOTE:

- 1A) FOR DOORS THAT ARE 48" TALL. HINGE GAP = 3/8"
 - 1B) FOR DOORS THAT ARE 49" TO 72" TALL. HINGE GAP = 3/8"
 - 1C) FOR DOORS THAT ARE 73" TO 96" TALL. HINGE GAP = 7/16"
- FOR INSTALLATION WELD THESE HINGES IN ADDITION TO SCREWING.
MAXIMUM LOUVER DOOR WIDTH = 36" WIDE. IF DOOR IS TO BE WIDER THAN 36", THEN THE ORDER MUST GO THROUGH ENGINEERING

CHANGE LETTER	REVISION DESCRIPTION	CHK'D. BY:	APP'D. BY:	DATE
RUSKIN Mfg. PROPRIETARY INFORMATION	Grandview, MO			
STANDARD EXT. LVR DOOR W/ HINGE ON LEFT FRONT (HINGE ON RIGHT OPP)		DWC. CERTIFIED		
TITLE		DWC. NO.		
RUSKIN Mfg. PROPRIETARY INFORMATION		60-021338-01B		
NONE		DATE:		
PLOT SCALE		DATE:		
DWN. BY: JAL		DATE: 3-6-02		
CHK. BY:		DATE:		
APP'D. BY:		DATE:		