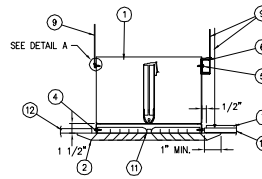


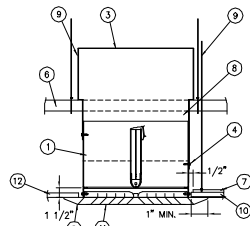
INSTALLATION 1
DUCTLESS RETURN AND
FLEX DUCT SUPPLY



DUCTLESS AND FLEX DUCT SUPPLY

- | ITEM | DESCRIPTION |
|------|--|
| 1. | DAMPER |
| 2. | GRILLE FRAME (20 GA. MIN.) |
| 3. | DUCT (WHERE SHOWN) |
| 4. | #8 SHEET METAL SCREW |
| 5. | #10 SHEET METAL SCREW |
| 6. | 16 MSG X 1 1/2" CHANNEL |
| 7. | CEILING GRID (UL CLASSIFIED) |
| 8. | DUCT DROP (WHERE SHOWN) |
| 9. | 12 SWG STEEL WIRE |
| 10. | ACOUSTICAL LAY-IN PANELS (UL CLASSIFIED) |
| 11. | DIFFUSER OR GRILLE CORE (METALLIC OR NON-METALLIC) |
| 12. | RIGID GYPSUM WALL BOARD CEILING (UL CLASSIFIED) |

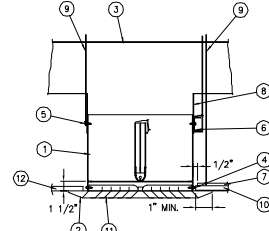
INSTALLATION 2
DAMPER WITH DUCT SUPPORT



STEEL DUCT WITH DUCT SUPPORT

- | ITEM | DESCRIPTION |
|------|--|
| 1. | DAMPER |
| 2. | GRILLE FRAME (20 GA. MIN.) |
| 3. | DUCT |
| 4. | #8 SHEET METAL SCREW |
| 5. | #10 SHEET METAL SCREW |
| 6. | 16 MSG X 1 1/2" CHANNEL |
| 7. | CEILING GRID (UL CLASSIFIED) |
| 8. | DUCT DROP |
| 9. | 12 SWG STEEL WIRE |
| 10. | ACOUSTICAL LAY-IN PANELS (UL CLASSIFIED) |
| 11. | DIFFUSER OR GRILLE CORE (METALLIC OR NON-METALLIC) |
| 12. | RIGID GYPSUM WALL BOARD CEILING (UL CLASSIFIED) |

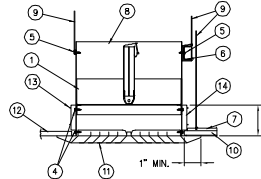
INSTALLATION 3
DUCT WITH DAMPER SUPPORT
(RECTANGULAR DAMPER ONLY)



STEEL DUCT WITH DAMPER SUPPORT

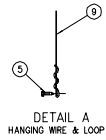
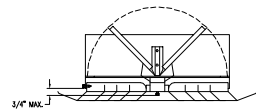
- | ITEM | DESCRIPTION |
|------|--|
| 1. | DAMPER |
| 2. | GRILLE FRAME (20 GA. MIN.) |
| 3. | DUCT |
| 4. | #8 SHEET METAL SCREW |
| 5. | #10 SHEET METAL SCREW |
| 6. | 16 MSG X 1 1/2" CHANNEL |
| 7. | CEILING GRID (UL CLASSIFIED) |
| 8. | DUCT DROP |
| 9. | 12 SWG STEEL WIRE |
| 10. | ACOUSTICAL LAY-IN PANELS (UL CLASSIFIED) |
| 11. | DIFFUSER OR GRILLE CORE (METALLIC OR NON-METALLIC) |
| 12. | RIGID GYPSUM WALL BOARD CEILING (UL CLASSIFIED) |

INSTALLATION 5
ASSEMBLY HEIGHT

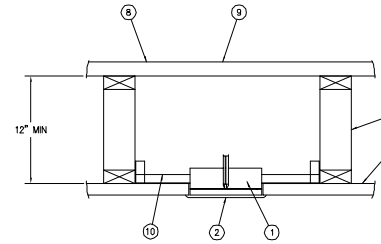


- | ITEM | DESCRIPTION |
|------|---|
| 1. | DAMPER |
| 2. | GRILLE FRAME (20 GA. MIN.) |
| 3. | DUCT (WHERE SHOWN) |
| 4. | #8 SHEET METAL SCREW |
| 5. | #10 SHEET METAL SCREW |
| 6. | 16 MSG X 1 1/2" CHANNEL |
| 7. | CEILING GRID (UL CLASSIFIED) |
| 8. | DUCT DROP (WHERE SHOWN) |
| 9. | 12 SWG STEEL WIRE |
| 10. | ACOUSTICAL LAY-IN PANELS (UL CLASSIFIED) |
| 11. | DIFFUSER OR GRILLE CORE (METALLIC OR NON-METALLIC) |
| 12. | RIGID GYPSUM WALL BOARD CEILING (UL CLASSIFIED) |
| 13. | 16 SWG STEEL WIRE |
| 14. | THERMAL BLANKET INSULATION-REFRACTORY CERAMIC FIBER |

INSTALLATION 4
VOLUME ADJUSTMENT CONTROL

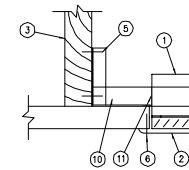


INSTALLATION 6
WOOD TRUSS WITH GYPBOARD CEILING

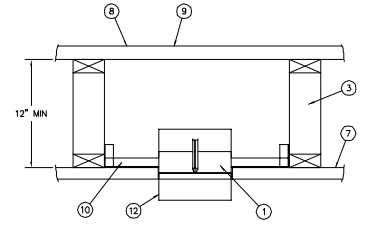


- | ITEM | DESCRIPTION |
|------|---|
| 1. | DAMPER |
| 2. | GRILLE FRAME (STEEL OR ALUM) |
| 3. | WOOD FRAMING MEMBER OR JOIST |
| 4. | #8 SHEET METAL SCREW |
| 5. | #6 PENNY NAIL OR #8 SCREW |
| 6. | 3/16\" DIA STEEL RIVET |
| 7. | 5/8\" GYPSUM WALLBOARD |
| 8. | FLOOR CONSTRUCTION |
| 9. | FLOOR CONSTRUCTION |
| 10. | 1\" X 1/2\" 20GA MIN GALV MOUNTING ANGLE |
| 11. | 1\" X 1/2\" X 3\" 20GA MIN GALV MOUNTING CLIP |
| 12. | 3\" GALVANIZED COLLAR (OPTIONAL) |

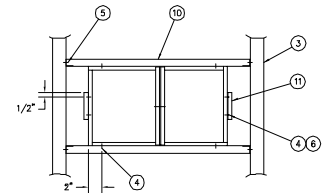
MOUNTING DETAIL



INSTALLATION 7
DAMPER IN SLEEVE FOR
DUCT PENETRATION



INSTALLATION 6A



INSTALLATION 6B

