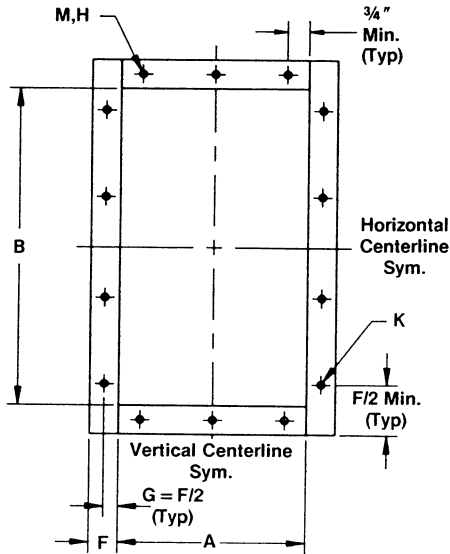


STANDARD BOLT HOLE PATTERN DATA

SQUARE AND RECTANGULAR DAMPERS



F = 2" Standard (1 1/2" - 3" Optional)
 H = No. of Bolt Holes (6" Center to Center)
 K = No. of Bolt Holes (6" Center to Center)
 M = Hole Dimension (7/16" Diameter Standard)

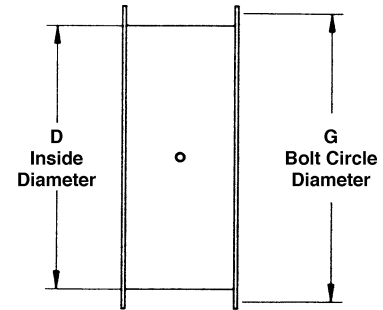
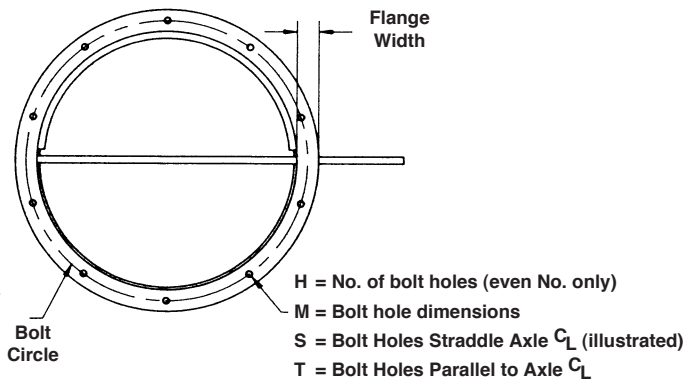
NOTES:

- ① When H or K are one hole, locate hole on centerline.
- ② To calculate "H" & "K" on damper with standard construction (2" flanges):

$$"H" = \frac{A - 1.5}{6} \quad "K" = \frac{B + 2}{6}$$

Drop any decimal and add one (1) to determine number of holes.

ROUND DAMPERS



Standard Bolt Circle = Damper Diameter + Flange Width + 1/4".

DAMPER DIA.		H NO. OF HOLES	H HOLE/SLOT DIMENSIONS	DEGREES BETWEEN HOLES
ABOVE	THROUGH			
4" & above	6"	4	3/8"	90
6"	10"	6	3/8"	60
10"	14"	8	3/8"	45
14"	20"	10	3/8" x 1/2"	36
20"	28"	12	3/8" x 1/2"	30
28"	36"	16	3/8" x 1/2"	22 1/2
36"	42"	18	9/16" x 11/16"	20
42"	48"	20	9/16" x 11/16"	18
48"	58"	24	9/16" x 11/16"	15
58"	72"	30	9/16" x 11/16"	12

Bolt hole pattern data shown on this sheet for square, rectangular, and round dampers indicates standard construction. When clearly specified, Ruskin can provide nonstandard bolt hole sizes and patterns to meet your varying requirements.