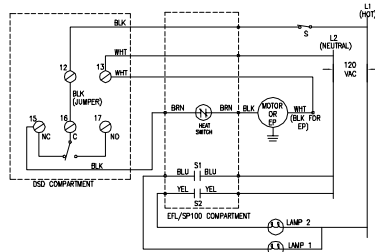


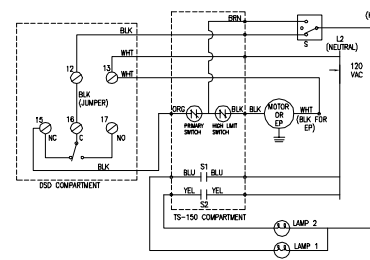
- NOTES:
1. WIRING DIAGRAM IS FOR 120VAC.
 2. FOR 220VAC USE TERMINALS 12 & 14.
 3. FOR 24VAC USE TERMINALS 1 & 2.
 4. SWITCH BY OTHERS.
 5. CONSULT DETECTOR MANUFACTURER'S INSTALLATION INSTRUCTIONS FOR FIELD AND OTHER WIRING INFORMATION.

FACTORY INSTALLED DUCT DETECTORS ON DAMPERS WITH EFL



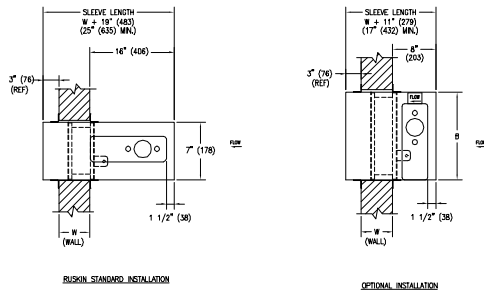
- NOTES:
1. WIRING DIAGRAM IS FOR 120VAC.
 2. FOR 220VAC USE TERMINALS 12 & 14.
 3. FOR 24VAC USE TERMINALS 1 & 2.
 4. SWITCH BY OTHERS.
 5. LAMPS BY OTHERS OR WITH MCP (ORDERED SEPARATELY).
 6. CONSULT DETECTOR MANUFACTURER'S INSTALLATION INSTRUCTIONS FOR FIELD AND OTHER WIRING INFORMATION.

FACTORY INSTALLED DUCT DETECTORS ON DAMPERS WITH EFL/SP100

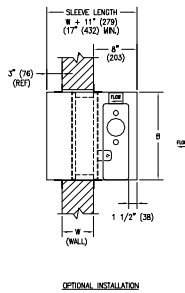


- NOTES:
1. WIRING DIAGRAM IS FOR 120VAC.
 2. FOR 220VAC USE TERMINALS 12 & 14.
 3. FOR 24VAC USE TERMINALS 1 & 2.
 4. SWITCH BY OTHERS.
 5. LAMPS BY OTHERS OR WITH MCP (ORDERED SEPARATELY).
 6. CONSULT DETECTOR MANUFACTURER'S INSTALLATION INSTRUCTIONS FOR FIELD AND OTHER WIRING INFORMATION.

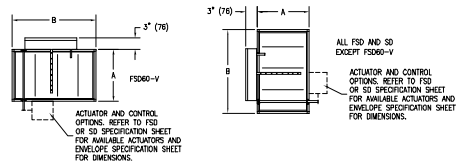
FACTORY INSTALLED DUCT DETECTORS ON DAMPERS WITH TS150



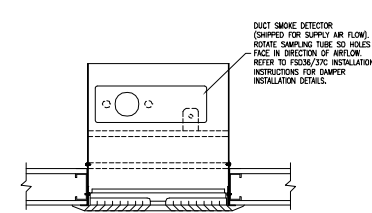
RUSKIN STANDARD INSTALLATION



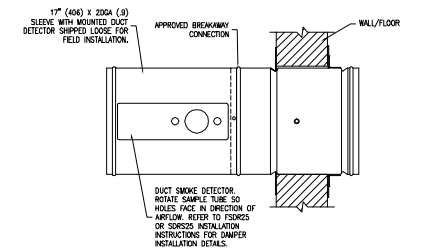
OPTIONAL INSTALLATION



ENVELOPE DETAIL FOR DSD



FACTORY INSTALLATION DETAILS FOR FSD36/37C



FACTORY INSTALLATION DETAILS FOR FSDR25 AND SDRS25