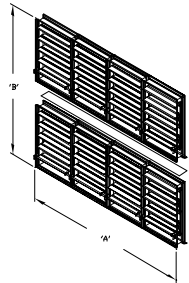


MAX UL CLASSIFIED SIZE  
 FSD60 06, 60-106, 3706, 3606, 3506, 3406

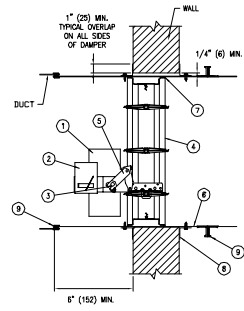


"A" = 126" (3200) FOR FSD3606  
 "A" = 120" (3048) FOR FSD406, 3506, 3706, 60 06, 60-106  
 "B" = 122" (3099) FOR FSD3606  
 "B" = 96" (2440) FOR FSD606, 60-106  
 "B" = 90" (2286) FOR FSD406, 3506, 3706

14 GAGE (2) X DAMPER  
 "X" DIMENSION X 5" (127) WIRE REINFORCING PLATE

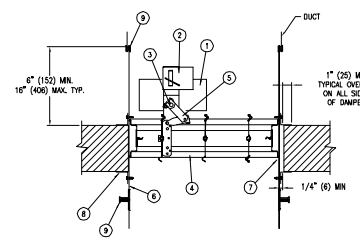
VERTICAL INSTALLATION

- ITEM DESCRIPTION
- ACTUATOR (LOCATION MAY VARY), DAMPER MAY BE SUPPLIED WITHOUT ACTUATOR INSTALLED. RUSKIN'S UL LISTED FIRE DAMPER ACTUATORS MAY BE FIELD INSTALLED IF PROPERLY LABELED. SEE ACTUATOR INSTALLATION INSTRUCTIONS FOR FIELD MOUNTING OF DAMPER ACTUATORS.
  - OPTIONAL THROSTAT OR SP100
  - AUXILIARY OPERATING JACK SHAFT
  - DAMPER
  - OVER CENTER LOCK
  - SLEEVE
  - CAULKING MATERIAL (MAY BE ON EITHER SIDE OF DAMPER FRAME)
  - PTMA OR CONVENTIONAL MOUNTING ANGLES
  - S-JOINT/DUCT MATE, SLEEVE TO DUCT



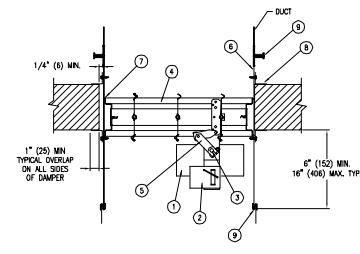
TYPICAL AIRFOIL INSTALLATION

HORIZONTAL INSTALLATION



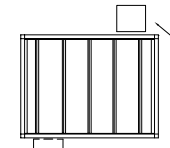
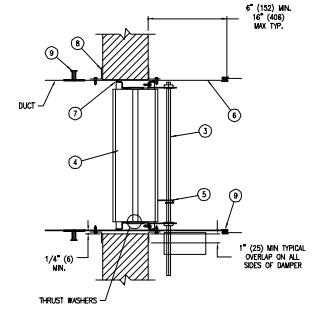
ACTUATOR ABOVE FLOOR

FSD-34, 35, 36 & 37



ACTUATOR BELOW FLOOR

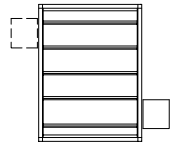
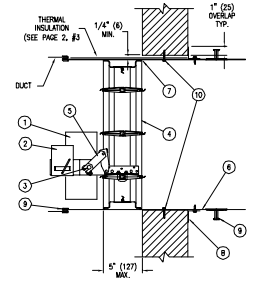
FSD60 OBV VERTICAL INSTALLATION (ONLY)



FSD-60V MOTOR LOCATIONS

THIS ACTUATOR LOCATION REQUIRES NON OIL-IMMERSED ACTUATORS ONLY (MA220, 223, 230, NF120, AND NF24).

FSD60 OUT OF WALL INSTALLATION



FSD-60 MOTOR LOCATIONS