

METAL STUD CONSTRUCTION WALL
VERTICAL INSTALLATION, DUCT CONNECTION TO DAMPER
(TOP VIEW)

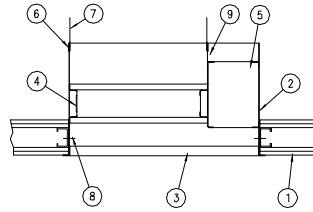


FIGURE 1

METAL STUD CONSTRUCTION WALL
VERTICAL INSTALLATION, DUCT CONNECTION TO SLEEVE
(TOP VIEW)

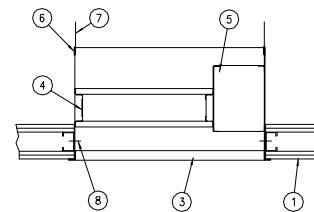


FIGURE 2

- | ITEM. | DESCRIPTION |
|-------|--|
| 1. | UL RATED WALL ASSEMBLY |
| 2. | FIRE/SMOKE DAMPER SLEEVE |
| 3. | STEEL FRAMED GRILLE WITH ALUMINUM OR STEEL CORE (WITH OR W/O OBD) BY OTHERS |
| 4. | FIRE/SMOKE DAMPER |
| 5. | ACCESS CABINET |
| 6. | S-JOINT/DUCT MATE, SLEEVE TO DUCT (TYP) |
| 7. | DUCT |
| 8. | #10 SCREWS, 12" C-C (TYP) |
| 9. | ACCESS CABINET REAR PANEL, ANGLED TO ALLOW DUCT CONNECTION (BY RUSKIN, USE IS OPTIONAL DEPENDING ON FIGURE 1 OR FIGURE 2 APPLICATION). |

MASONRY CONSTRUCTION WALL
VERTICAL INSTALLATION, DUCT CONNECTION TO DAMPER
(TOP VIEW)

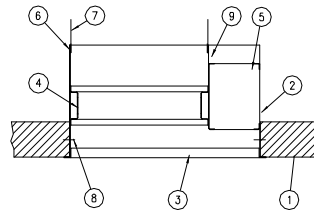


FIGURE 1

MASONRY CONSTRUCTION WALL
VERTICAL INSTALLATION, DUCT CONNECTION TO SLEEVE
(TOP VIEW)

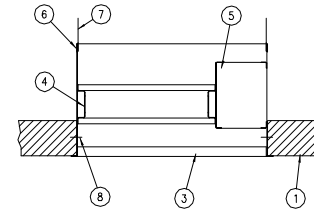
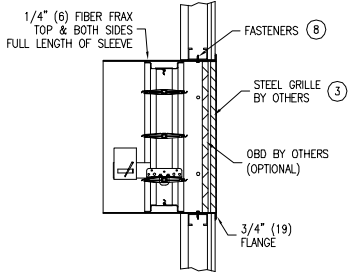
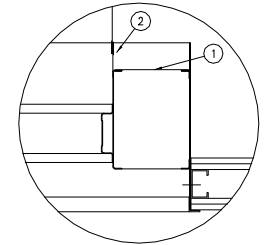


FIGURE 2

- | ITEM. | DESCRIPTION |
|-------|--|
| 1. | MASONRY WALL ASSEMBLY |
| 2. | FIRE/SMOKE DAMPER SLEEVE |
| 3. | STEEL FRAMED GRILLE WITH ALUMINUM OR STEEL CORE (WITH OR W/O OBD) BY OTHERS |
| 4. | FIRE/SMOKE DAMPER |
| 5. | ACCESS CABINET |
| 6. | S-JOINT/DUCT MATE, SLEEVE TO DUCT (TYP) |
| 7. | DUCT |
| 8. | #10 SELF TAPPING CONCRETE ANCHORS 12" C-C (TYP) |
| 9. | ACCESS CABINET REAR PANEL, ANGLED TO ALLOW DUCT CONNECTION (BY RUSKIN, USE IS OPTIONAL DEPENDING ON FIGURE 1 OR FIGURE 2 APPLICATION). |



TYPICAL FSD60FA INSTALLATION
WITH OPTIONAL OBD



- | ITEM. | DESCRIPTION |
|-------|--|
| 1. | ACCESS CABINET |
| 2. | ACCESS CABINET REAR PANEL, ANGLED TO ALLOW DUCT CONNECTION (BY RUSKIN, USE IS OPTIONAL DEPENDING ON FIGURE 1 OR FIGURE 2 APPLICATION). |