

BVC100 CAST ALUMINUM BRICK VENTS

STANDARD CONSTRUCTION

FRAME

#356 aluminum casting. Frame depth is 4".

BLADES

#356 aluminum casting. Blades overlap for optimum visual screening.

SCREEN

7 x 7 mesh aluminum insect screen.

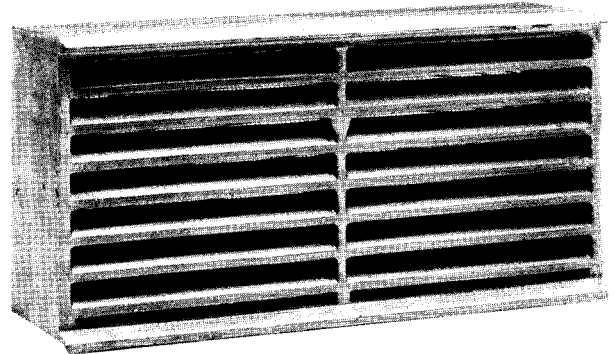
FINISH

Mill with asphaltum paint on parts built into masonry.

STANDARD SIZES

- | | |
|---|--|
| 8" x 2 ¹ / ₄ " | 16 ¹ / ₂ " x 2 ³ / ₈ " |
| 8 ¹ / ₄ " x 4 ¹⁵ / ₁₆ " | 16" x 4" |
| 8" x 7 ⁷ / ₈ " | 16" x 4 ¹⁵ / ₁₆ " |
| 12" x 2 ³ / ₄ " | 16" x 6" |
| 12" x 3 ¹ / ₂ " | 16" x 7 ³ / ₄ " |
| 12" x 5" | |
| 12" x 7 ³ / ₄ " | |

Special sizes are not available.



(See back of page for dimensions.)

FEATURES

Ruskin's BVC100 brick vents offer superior venting. Standard features include:

- Minimum 39% free area for desired venting.
- A high, rear water stop gives optimum water penetration protection with drip at casting top and bottom to prevent water staining or spawling of brick.
- All aluminum construction for long life and corrosion resistance.

VARIATIONS

A selection of finishes are available at additional cost:

- .063 aluminum duct to 18" in length.
- Baked enamel in snow white, black, statuary bronze, or brick red.
- Colors and finishes to match Ruskin louvers (Consult Ruskin).

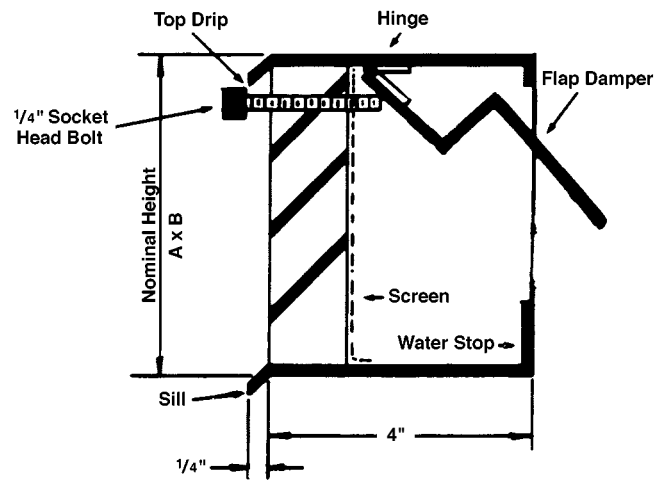
SUGGESTED SPECIFICATION

Furnish and install where indicated on drawings Ruskin brick vents Model BVC100. Frame and blade construction shall be #356 cast aluminum with asphaltum paint coating on parts to be built into masonry. Vents are supplied with 7 x 7 mesh aluminum insect screen. Finish shall be mill (or other as specified).

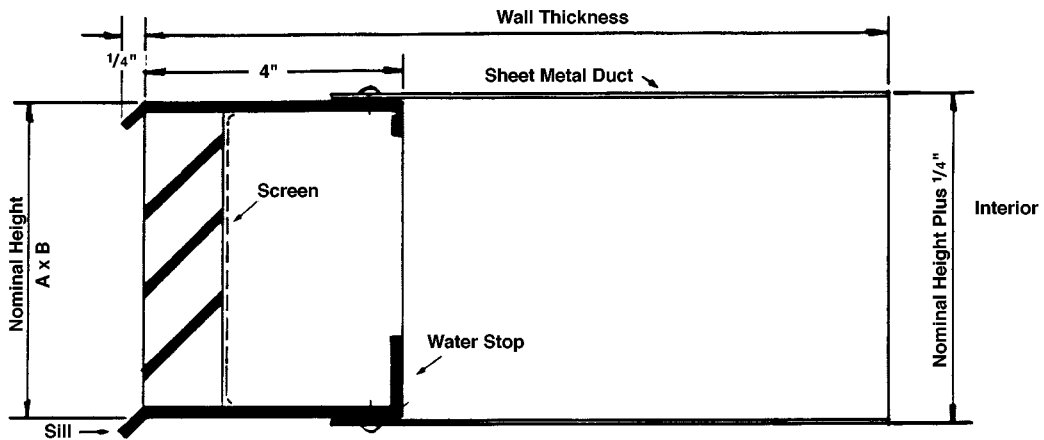
QTY.	SIZE		VARIATIONS
	A-WIDE	B-HIGH	
JOB CONTRACTOR		LOCATION	

BVC100 BRICK VENT OPTIONS

Exterior Key Operated Flap Damper Option



Straight Duct Option To 18" in Length



RUSKIN[®]

3900 Dr. Greaves Rd.
Kansas City, MO 64030
(816) 761-7476
FAX (816) 765-8955
www.ruskin.com