

## MCP10, MCP104, MCP20 and MCP204 MASTER CONTROL PANELS

### APPLICATION

These master control panels are for use in dynamic smoke management systems containing combination fire smoke dampers equipped with the Ruskin TS-150 FireStat.

### FEATURES

The MCP10 with ten control stations and the MCP20 with 20 control stations offer completely enclosed lights, switches and wiring terminals located within and protected by a hinged, lockable cover with viewing windows. Damper position indicator lights are replaceable and are red for a closed damper and green for an open damper. MCP10 and MCP20 are for 120 VAC applications while the MCP104 and 204 are for 24 VAC applications.

The switcher used on the MCP10/104 and MCP20/204 are three position with the following options:

**NORMAL position** – The damper functions as a fire damper by remaining open until closed by elevated temperatures. The damper may also be closed by smoke detector signal, fan interlock contact, etc.

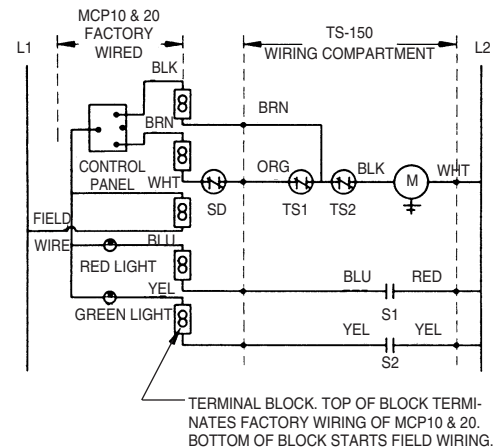
**CLOSED position** – The damper closes and remains closed regardless of any sensor signal.

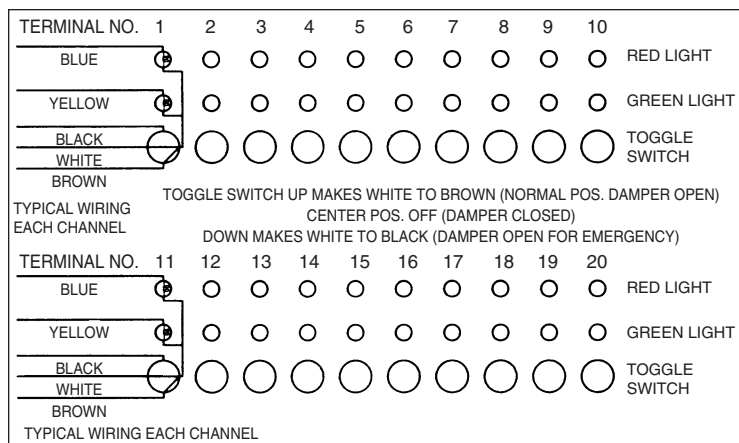
**OPEN position** – The damper opens and remains open until any optional sensor signals the damper to close and lock.



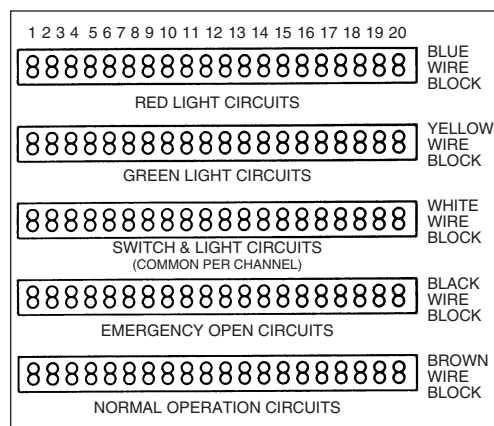
MCP20 shown

- M - Electric Actuator or EP Switch
- TS1 - Primary Temp. Sensor
- TS2 - High Limit Temp. Sensor
- S1 - Damper Position Indication Switch, closed when damper is closed.
- S2 - Damper Position Indication Switch, closed when damper is open.
- SD - Smoke Detector (optional, by others)





**CONTROL PANEL LAYOUT  
FOR MCP10 AND MCP20**



**TERMINAL PANEL LAYOUT  
FOR MCP10 AND MCP20**