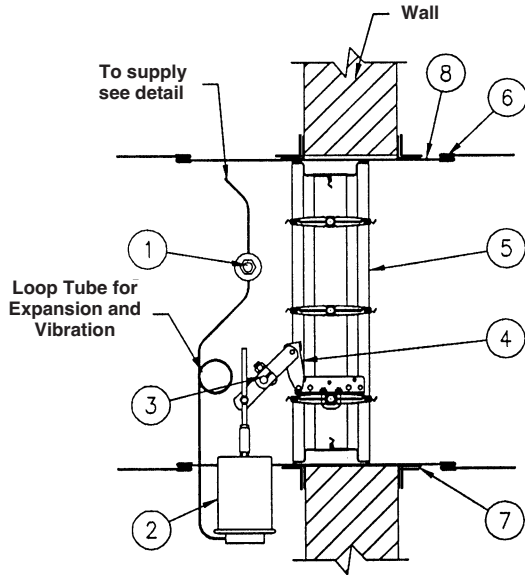
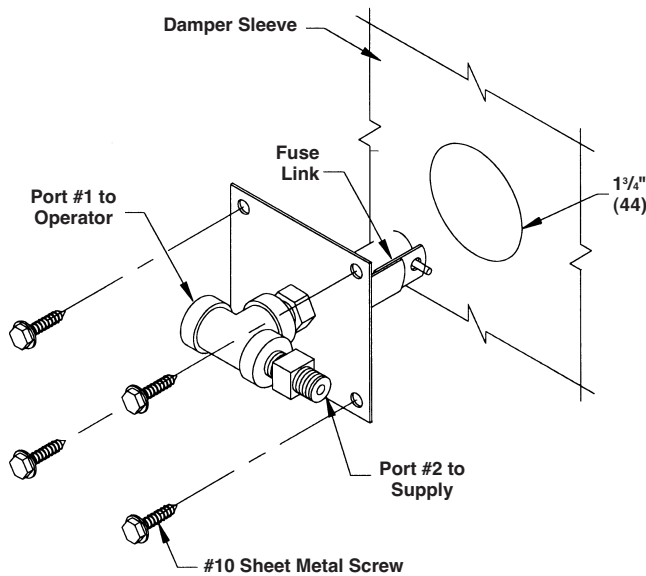


PFL PNEUMATIC FUSE LINK OPERATION INSTRUCTIONS SUPPLEMENT



- | ITEM | DESCRIPTION |
|------|--|
| 1. | Pneumatic Fuse Link (PFL) |
| 2. | Pneumatic Actuator |
| 3. | Auxiliary Shaft |
| 4. | Over-Center Lock |
| 5. | Damper Frame |
| 6. | Sleeve to Duct Connection (by others) |
| 7. | FAST, PFMA or conventional mounting angles |
| 8. | Sleeve |

SWITCH PIPING DETAIL



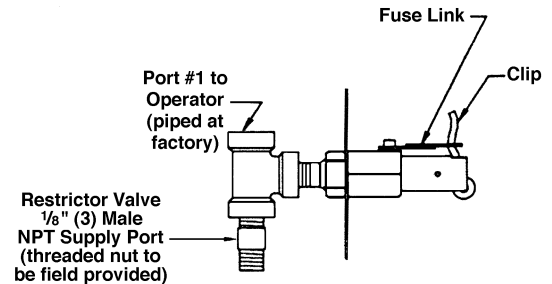
APPLICATION

The PFL is a UL Classified heat responsive device used in conjunction with Ruskin fire and smoke dampers. The PFL is **standard** on all fire and smoke dampers ordered with pneumatic actuators. Fire and smoke dampers ordered with pneumatic actuators may be ordered with the EFL and an EP (electric/pneumatic) switch. The PFL closes and locks the damper via a standard replaceable fuse link when temperatures in excess of 165°F (74°C), 212°F (100°C), or 285°F (141°C) are detected. **The PFL must be installed at the factory and cannot be added in the field.**

OPERATION

When the fusible link melts, air from the actuator is exhausted to close damper. The supply air continues to exhaust at the following rates:

PSI	10	15	20	25	30
EXHAUST RATE CFM	.37	.47	.52	.55	.62



Pneumatic actuators to be piped per local codes.

Electric actuators to be wired per the National Electric Code (NEC) and local codes. See actuator for wiring diagrams.



SEE COMPLETE MARKING
ON PRODUCT