

EFL/SP100 ELECTRIC RESETTABLE "FUSE" LINK AND SWITCH PACKAGE OPERATION INSTRUCTIONS SUPPLEMENT

APPLICATION

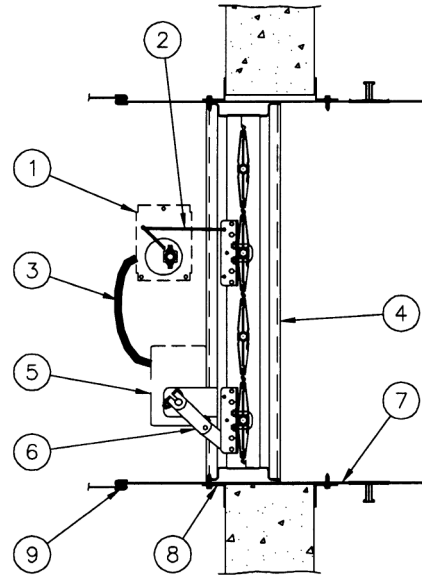
The EFL/SP100 is a UL Classified heat responsive device and position indicator switches (combined as a single unit) used in conjunction with Ruskin fire/smoke dampers. The EFL is **standard** on all fire/smoke dampers ordered with electric actuators. The EFL/SP100 will be provided when an electric actuator and separate SP100 position indicator switches are ordered. The EFL closes and locks the damper when temperatures exceed 165°F (74°C) or 212°F (100°C) or 250°F (121°C) or 350°F (177°C) depending on model ordered and installed. **The EFL/SP100 must be factory installed and cannot be added in the field. Replacement EFL/SP100's may be field installed with the approval of the local authority.**

OPERATION

Fire Conditions – When temperatures in excess of 165°F (74°C), 212°F (100°C), 250°F (121°C) or 350°F (177°C) are detected, the damper will close and lock. Upon cessation of fire conditions the damper can be reopened by pressing the reset button located on the EFL/SP100 assembly. The SP100 will allow for indication of damper position during fire conditions.

Smoke Conditions – When smoke is detected (detector optional) the damper will close and lock until the smoke signal ceases (or smoke detector resets). The system will then reset and the damper will open. The SP100 will allow for indication of damper position during smoke conditions.

- The damper may be closed at any time by placing the control switch (optional) in the CLOSED position.
- If the EFL/SP100 is tripped accidentally or during system testing, the EFL/SP100 must be reset by pressing the RESET button located on the EFL/SP100 assembly.
- Refer to the appropriate damper installation instructions for details on damper installation.



ITEM DESCRIPTION

1. EFL/SP100 System
2. Adjustable Connecting Rod
3. Flex Conduit
4. Damper Frame
5. Actuator or EP Switch

ITEM DESCRIPTION

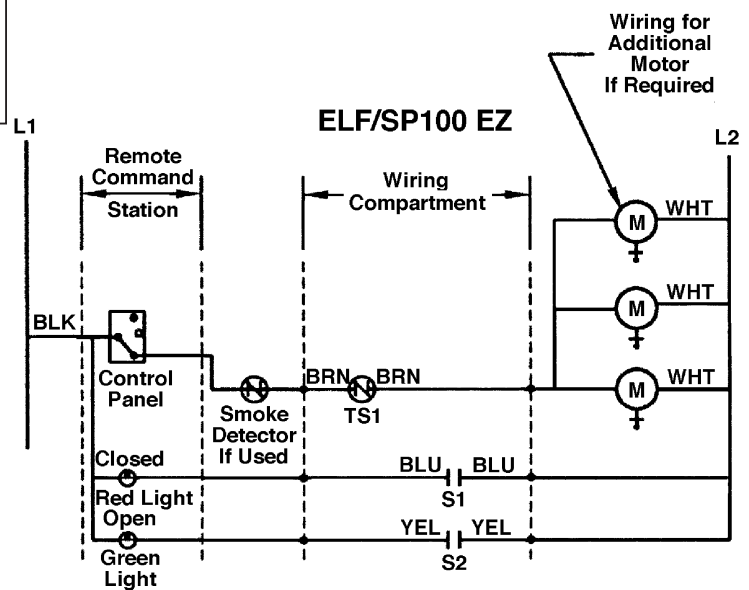
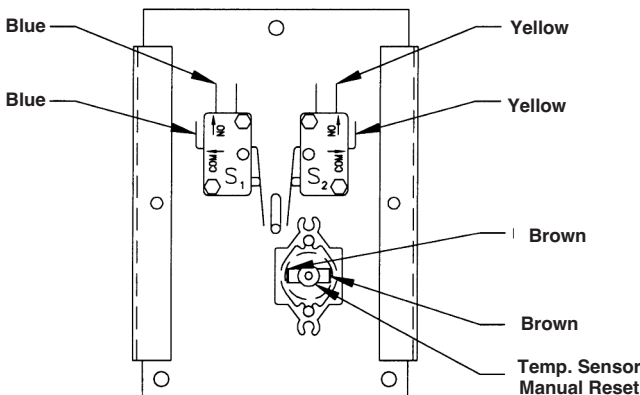
6. Over-Center Lock
7. Damper Sleeve
8. PFMA or conventional mounting angles
9. Sleeve to Duct Connection (by others)



SEE COMPLETE MARKING ON PRODUCT

Pneumatic actuators to be piped per local codes.
Electric actuators to be wired per the National Electric Code (NEC) and local codes. See actuator for wiring diagrams.

S1 and S2 Switch AMP Ratings: 15 AMPS, 24, 125 or 250 VAC 1/2 AMP, 125 VDC, 1/4 AMP, 250 VDC



DESCRIPTION

- M – Electric Actuator or EP Switch
- TS1 – Temp. Sensor
- S1 – Position Indicator Switch (Closed)
- S2 – Position Indicator Switch (Open)