

### Hess Tower Case Study, Houston, TX

#### Architect

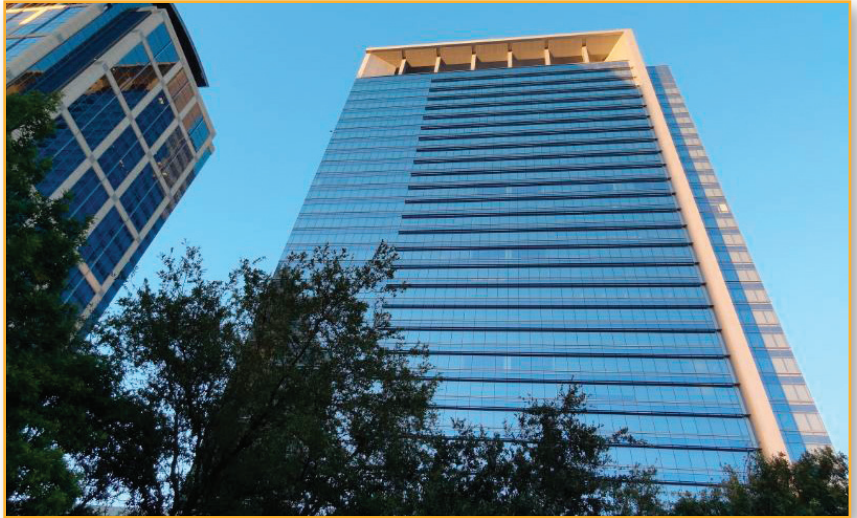
Gensler

#### Contractor

NOW Specialties, Inc.

#### Ruskin Architectural Products

EME745 Wind Driven Rain Resistant Louvers  
(See back page for mechanical products  
in Hess Tower)



## SITUATION

Hess Tower is a 29 story, 844,000 sq. ft. mixed use building containing commercial office, retail and dining space with an adjacent parking garage. It's located in Houston's Inner Loop East area adjacent to Discovery Green park, a 12 acre urban green space for outdoor activities, concerts and other entertainment events. Originally named Discovery Tower, it was renamed in 2009 for the Hess Corporation, its current lessee. It was formally completed in 2010 and is Houston's first downtown LEED Platinum office building.

*"Discovery Tower, now known as Hess Tower, was a very challenging project for NOW due to several obstacles. No access to the backside of the majority of the louvers as well as having to deal with multiple penetrations and architectural accent fins as an integral part of the louvers were the most notable. Ruskin did an outstanding job in engineering a blind attachment using interlocking aluminum zee clips as well as coordinating louver blade leave outs for both architectural fin attachment and blank off plates for current and future piping penetrations. Overall the project was a success and the Ruskin louvers added a great functional and architectural feature to this monumental project."*

Dan Ozuna  
Co-owner of NOW Specialties

## RUSKIN'S CHALLENGE

Being a high-profile building in downtown Houston, the aesthetic design was a critical component to the success of the project. The architectural design incorporated a significant amount of architectural louvers in the lower elevations. The louvers needed to provide HVAC airflow in some areas with protection against rain penetration in storm conditions. Other areas were to be inactive with blankoff panels on their interior. All louvers, whether active and inactive, needed to have the same exterior appearance with consistent transitions from one area to the next. The louvers required custom fabrication for various features such as pipe penetrations, mitered corners, door openings and decorative architectural fins. Being in a hurricane-prone area, the louvers had to stand up to the high velocity winds that can occur in the area. Additionally, many of the areas of louver installations were inaccessible from the rear which required those louvers to be installed and fastened entirely from the exterior.

## RUSKIN SOLUTION

Ruskin and its sales representative, **Steve Bryan** of **ADW Corporation**, partnered with NOW Specialties to successfully complete this LEED® Platinum Certified project. ADW and NOW provided vital information on field conditions and adjoining construction to Ruskin's project management team. This enabled our engineers to precisely design the complex louver system and its custom installation details.

The louver model selected for this prestigious project was the EME745. Its Wind Driven Rain (WDR) rating as well as its architectural continuous blade design was the perfect product for this demanding application. The two-piece

(continued)

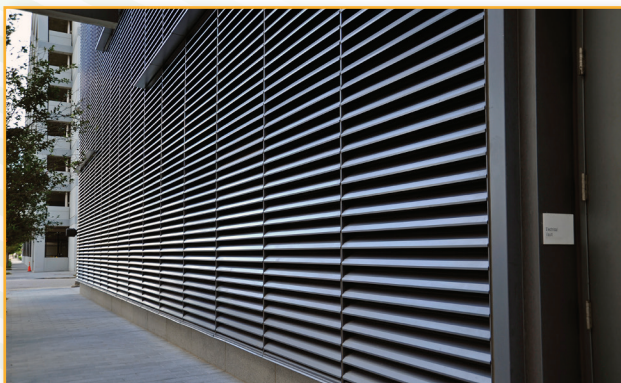
## RUSKIN SOLUTION *(continued)*

louver construction includes an exterior 4" deep stationary louver with hidden mullions and a rear 3" deep vertical VVDR louver that provides excellent weather protection for HVAC intakes. The two louvers are factory combined prior to shipment to the jobsite. Integral to the model is a special design for inactive areas. To keep the clean lines of the exterior louver, the 3" louver is replaced with a solid blank-off panel to block weather & humidity.

Ruskin's Geneva, Alabama production facility fabricated the louvers & delivered to the jobsite in coordination with NOW's installation schedule. Ruskin's in-house painting facility is state-of-the-art that not only shortens the lead time to the job site, but includes a 20-year standard warranty for painted finishes. For Hess Tower, the louvers were coated with Ruskin's Pearldize 70 finish (70% Floropolymer) in a custom Meteor Gray pearlescent color. Due to the extensive custom fabrication and installation requirements, a team effort was needed to successfully design, build and supply the louvers.

## SUMMARY

Ruskin is very proud of its contribution to the Hess Tower project. The louver system is a key element in the building's form and function. With innovative products, comprehensive project design and management services and unmatched quality in fabrication, Ruskin is prepared to tackle any architectural challenge. That is why Ruskin is Specified by Many, Equaled by None!



# RUSKIN®

GO GREEN  GO RUSKIN



## MECHANICAL PRODUCTS DETAIL

Ruskin also provided several mechanical products on this project sold by **Mike Buller** of **DistribAire, Inc.** in Houston.

### Design Engineer

Wylie Consulting Engineers

### Shell/Core Mechanical Contractor

Letsos Company

### Tenant Build-Out Mechanical Contractor

Way Engineering LTD

### Life Safety Products

FSD60 and DIBD2



Ruskin's FSD60 airfoil series dampers are the gold standard for low pressure drop Life Safety Dampers. Class 1 leakage ratings accompany a wide range of installation solutions like

- Modulating Airflow Control
- Balancing Airflow in Ducts
- Shaft Minimal Sleeve Lengths
- Out of Wall/Floor
- Grille Styles
- Vertical Blades
- Front Access

For Hess Tower, our FSD60 dampers also included an integral switch package that will allow the facility to monitor and maintain damper position.

### Sound Attenuation Products

DM60



These five foot silencers were selected to eliminate the noise coming from the generator room. Selections like this are made easy using our FREE sound analysis program called ASAP. Logon today at [www.ruskin.com/sound/](http://www.ruskin.com/sound/)

