

DLD-1506

Drum Diffuser



APPLICATION

The Ruskin DLD series supply diffuser systems are designed to provide an air distribution system with the benefit of having directional air control. The system is ideal for open ceiling applications that need single point supply air with long throws. The Drum Louver allows you to "spot" the air where you need it most.

FEATURES

- ▶ Lightweight aluminum construction
- ▶ Drum louver diffusers for high installations
- ▶ Internal precision tuned DLD air deflector (standard)
- ▶ Built in duct cap with hanging duct supports

DIMENSIONAL DATA

Ruskin Model#	A	B	C	Grill Size	Weight
DLD-1506	24.625	22.500	9.000	15 x 6	47 LBS

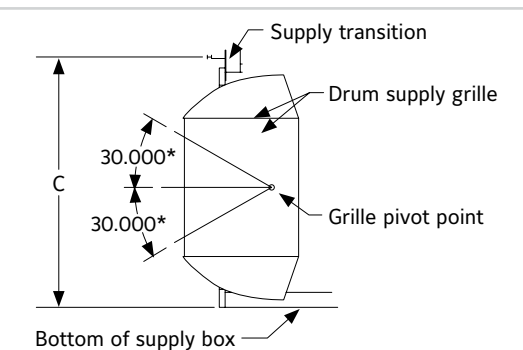
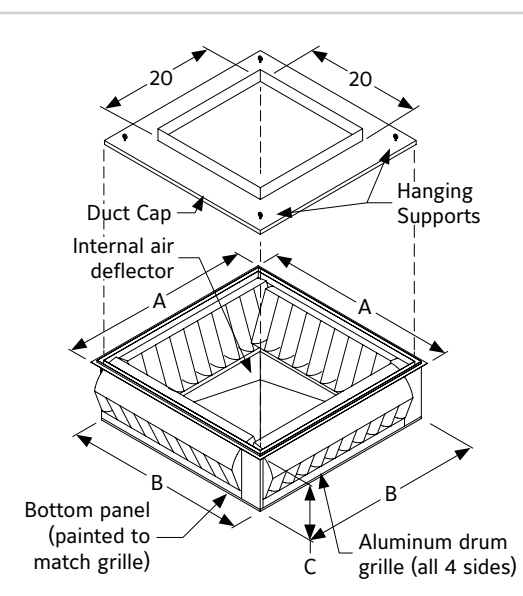
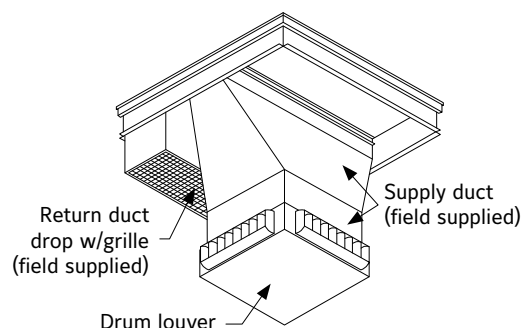
ENGINEERING DATA

Ruskin Model#	CFM	30° Deflection			0° Deflection			Grill Color	Duct Cap
		Noise	Static	Throw	Noise	Static	Throw		
DLD-1506	1200-2000	<30	.420	12-16	<25	.29	16-20	Aluminum/Gray	Included

RECOMMENDED SPECIFICATION

Drum Louver diffuser shall be aluminum construction and provide minimum 30 degree vertical adjustment with full horizontal blade adjustment to deliver single point supply air for large space applications. Manufacturers published data sheet shall include CFM rating, noise, static, and throw information. Drum louver shall be in all respects equivalent to Ruskin model DLD. Critical: Drum louver shall incorporate a standard DLD precision tuned internal air deflector to ensure quite even airflow to all sides with low pressure drop.

TYPICAL INSTALLATION



LINKS TO IMPORTANT DOCUMENTS

Document Title
Limited Warranty Document



3900 Doctor Greaves Road
Grandview, MO 64030
Website: www.ruskin.com
Phone: (816) 761-7476