

ELF6375DXD

(100PSF Option)
Installation Guide



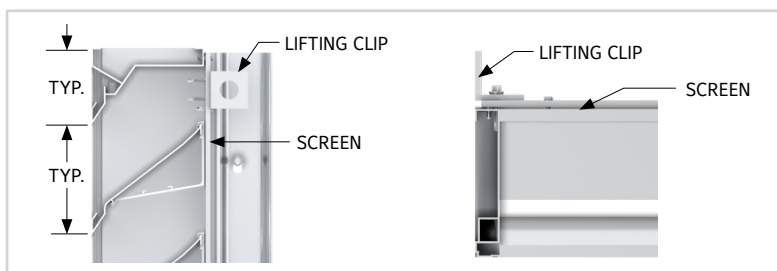
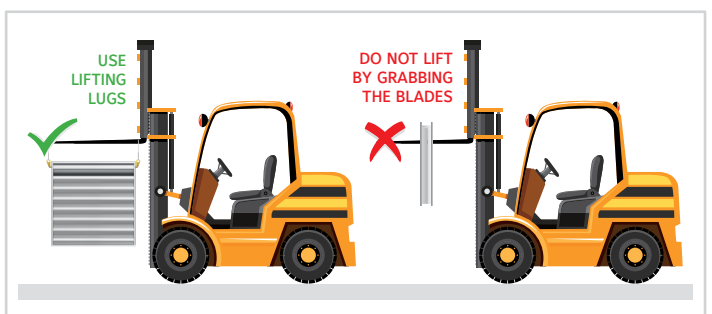
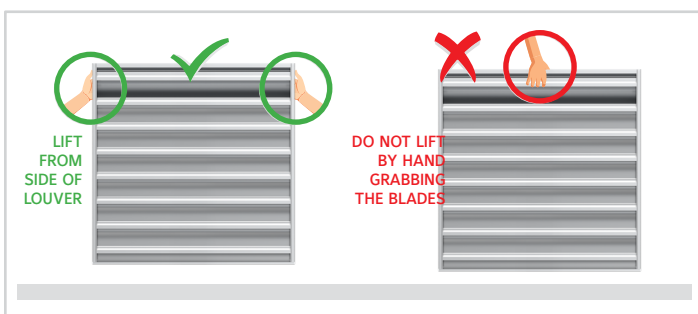
PRE-ASSEMBLY INSTRUCTIONS:

1. Remove louvers & accessories from shipping containers & inspect for damage. Single section units will be shipped fully assembled. Multi-section units will be shipped in shipping sections to be assembled at the job site. Large multi section units may be packaged in more than one shipping crate.
2. Care must be taken when handling components. Lift louver sections carefully by the supports or frames. Avoid lifting by louver blades. Do not apply excessive force to any point of the section. Lift at multiple points, if necessary to avoid deformation or racking of components.
3. Inspect louvers & components after removal from containers. Verify that all components & fasteners are accounted for. Report any shortages immediately to Ruskin manufacturing.
4. Inspect the openings that the louvers will be installed in. Verify that the openings are square & that the unit will fit prior to installation.
5. Contact your local Ruskin representative if you have questions pertaining to this installation or other field modifications.
6. Ensure that you have received ship loose parts & a box with hardware.

ASSEMBLY PROCEDURE:

1. If installing an extended sill (with end dams) in the opening. Install the sill pan in between the sections if the louver is single section wide & multi-section high. Install sill pan with lap strips if the louver is multi section wide & high. (As shown in exploded detail) make sure to apply sealant at the location where gutters meet prior to installation of louvers.
2. Locate ship loose hardware required for louver multi-section Assemblies.
3. Position the louver sections faced down on a level, non-abrasive surface in the configuration they will be assembled in. Reference the tag numbers on each section to ensure the sections are in correct order.
4. Refer to appropriate exploded details for splice hardware identification & location. Now fasten the sections together at frames, support splices. (Supports are pre-drilled at plant for ease).
5. If perimeter clips or continuous angles are to be installed, locate & anchor them in the opening. (Reference clip angle installation guide for instructions).
6. Level the louver assembly both horizontally & vertically in the opening using shims. (Shims not provided by Ruskin).
7. Position the louver in the opening so that the desired sealant joint will be maintained around the perimeter of louver.
8. After louver is secured, install backer rod & sealant around louver perimeter. (Sealant not provided by Ruskin).

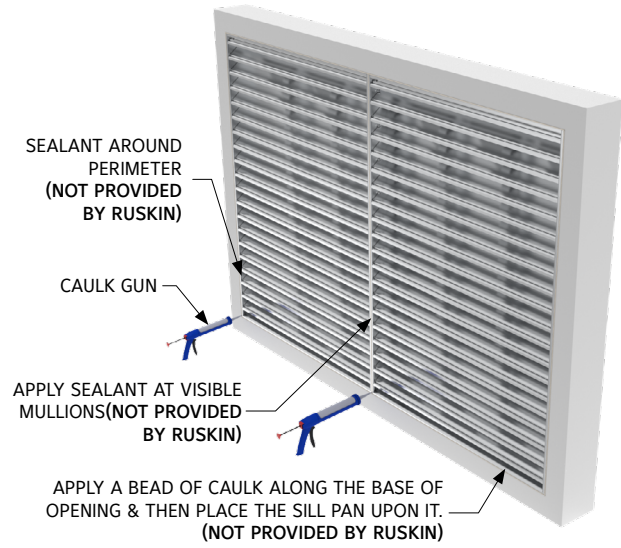
LOUVER LIFTING INSTRUCTIONS



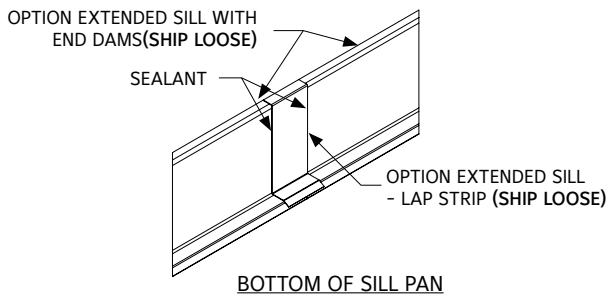
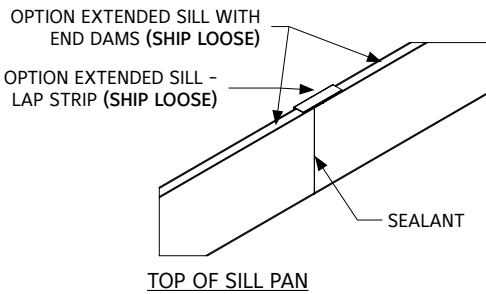
2X1 MULTI SECTION INSTALLATION



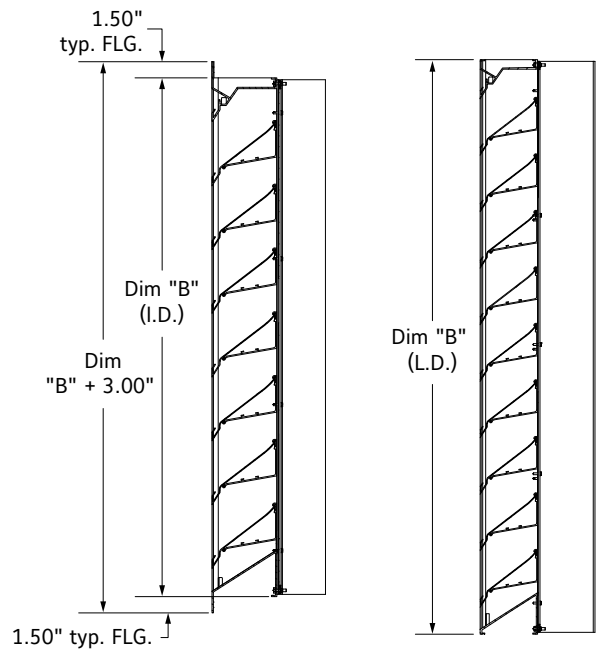
2X1 MULTI SECTION EXPLODED VIEW
ISOMETRIC REAR VIEW



MULTI SECTION LOUVER ASSEMBLY
ISOMETRIC FRONT VIEW (SEALANT / CAULK INFORMATION)

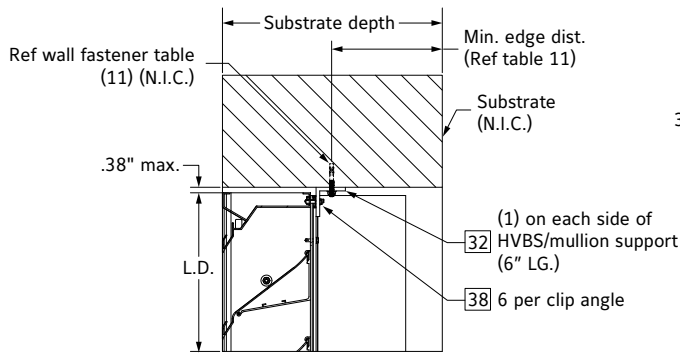
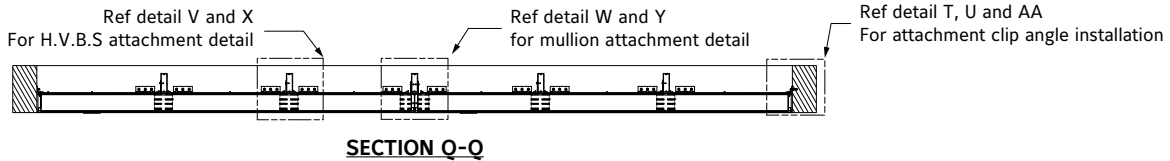


DETAIL A
MULTI LAP STRIP SEALANT INFO.



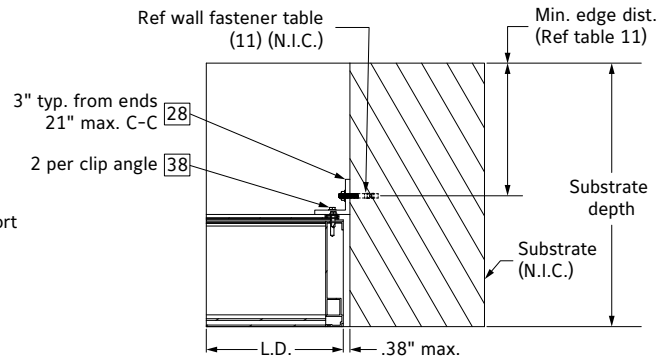
SECTION D-D

SECTION F-F



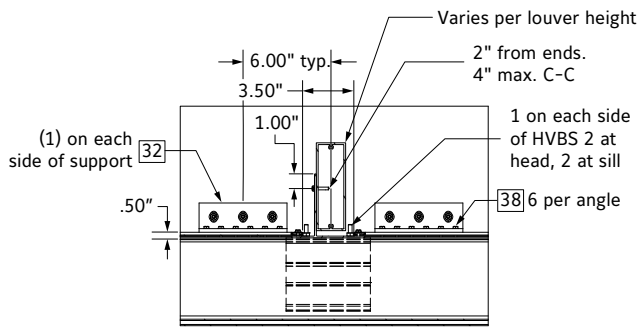
DETAIL R

Attachment Clip Angle Installation @ Head Frame
(Wood/Metal/Concrete)
(Sill frame shown similar)



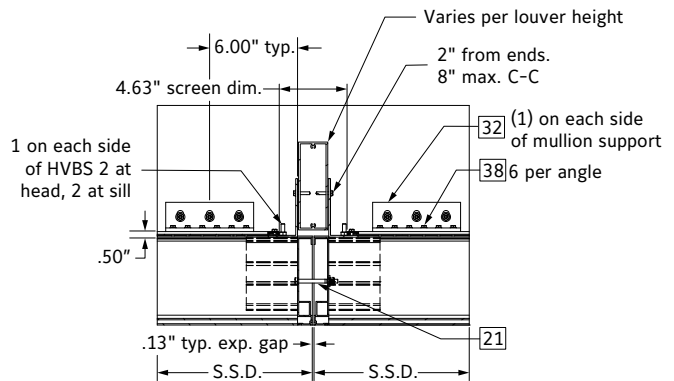
DETAIL T

Attachment Clip Angle Installation @ Jamb Frame
(Wood/Metal/Concrete/12"CMU)



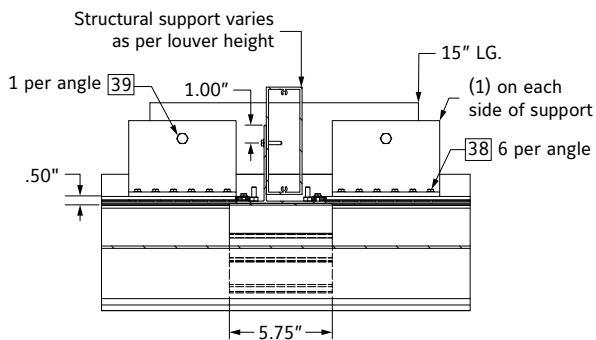
DETAIL V

H.V.B.S. Connection Detail
(Wood/Metal/Concrete)



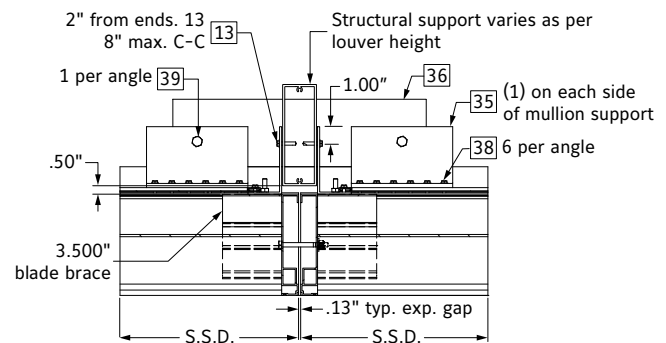
DETAIL W

Mullion Connection Detail
(Wood/Metal/Concrete)



DETAIL X

HVBS Connection Detail @ CMU

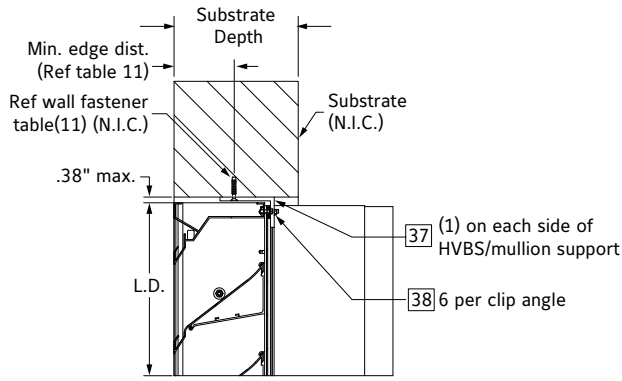


DETAIL Y

Mullion Connection Detail @ CMU

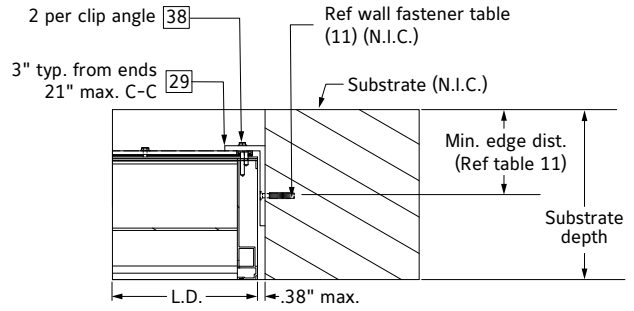
*See table 2 for wall type and wall depth requirement for Standard or Reverse Angle Installation

100PSF UNLIMITED WIDTH BY 90" TALL MULLION MID SPAN CONNECTION DETAILS



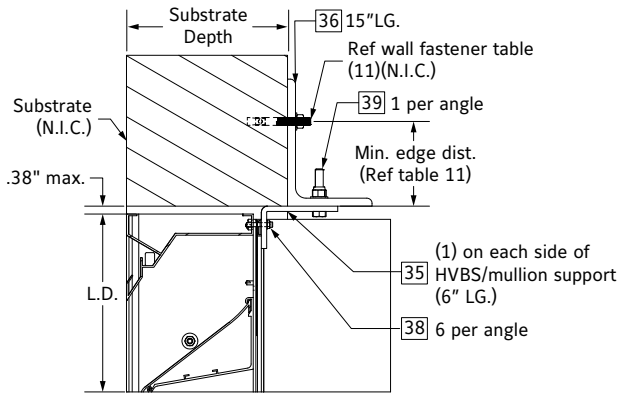
DETAIL S

Reverse Clip Angle Installation @ Head Frame
(Wood/Metal/Concrete)
(Sill frame shown similar)



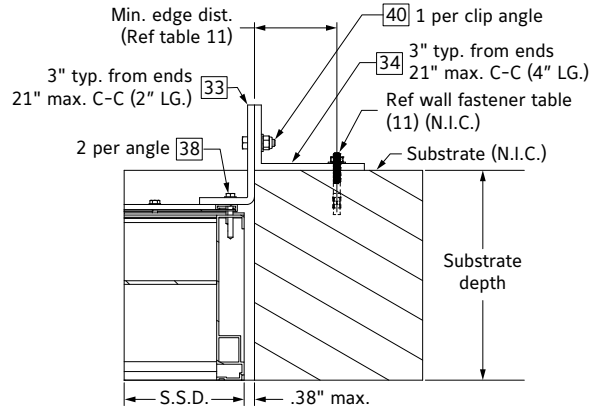
DETAIL U

Reverse Clip Angle Installation @ Jamb Frame
(All substrates except 6" CMU)



DETAIL Z

Attachment Clip Angle Installation @ Head Frame CMU only
(Sill frame shown similar)



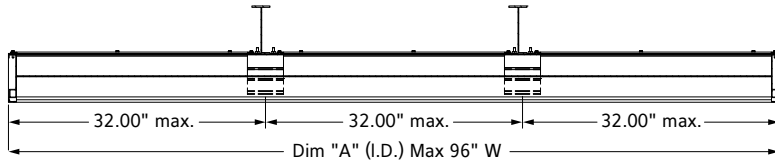
DETAIL AA

Double Angle Installation @ Jamb Frame
(Grout Filled CMU)

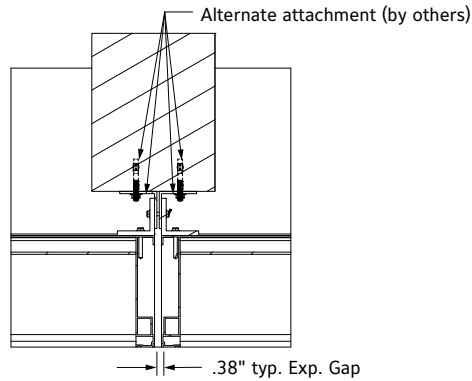
TABLE 13 - ELF6375DXD - DEFAULT INSTALLATION TYPE - PERIMETER INSTALL

SUBSTRATE TYPE	WALL DEPTH RANGE	INSTALL TYPE	LOCATION	REFERENCE SHEET	SUBSTRATE TYPE	WALL DEPTH RANGE	INSTALL TYPE	LOCATION	REFERENCE SHEET	
WOOD	6" - 9 1/2"	REVERSE ANGLE	HEAD/SILL	DETAIL S	GROUT FILLED CMU	6"	DOUBLE ANGLE	HEAD/SILL	DETAIL Z	
			JAMBS	DETAIL U				JAMBS	DETAIL AA	
	> 9 1/2"	STANDARD ANGLE	HEAD/SILL	DETAIL R			> 6" - 11"	DOUBLE ANGLE	HEAD/SILL	DETAIL Z
			JAMBS	DETAIL T					JAMBS	DETAIL U
STEEL & ALUMINUM	6" - 8"	REVERSE ANGLE	HEAD/SILL	DETAIL S	> 11"	DOUBLE ANGLE	HEAD/SILL	DETAIL Z		
			JAMBS	DETAIL U			JAMBS	DETAIL T		
	> 8"	STANDARD ANGLE	HEAD/SILL	DETAIL R		DOUBLE ANGLE	HEAD/SILL	DETAIL Z		
			JAMBS	DETAIL T			JAMBS	DETAIL T		
CONCRETE	6" - 9 1/2"	REVERSE ANGLE	HEAD/SILL	DETAIL S	> 11"	DOUBLE ANGLE	HEAD/SILL	DETAIL Z		
			JAMBS	DETAIL U			JAMBS	DETAIL T		
	> 9 1/2"	STANDARD ANGLE	HEAD/SILL	DETAIL R		DOUBLE ANGLE	HEAD/SILL	DETAIL Z		
			JAMBS	DETAIL T			JAMBS	DETAIL T		

100PSF UNLIMITED WIDTH X UNLIMITED HEIGHT



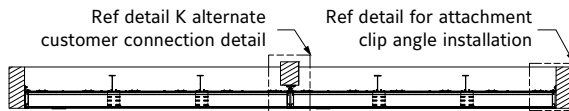
SECTION G-G



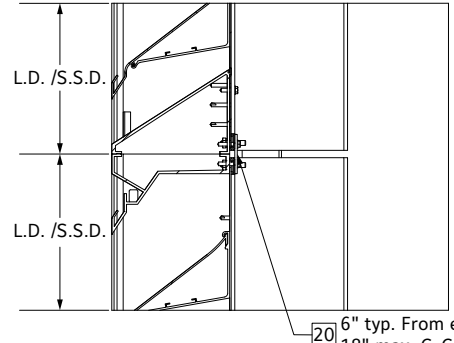
DETAIL K

Alternate Customer Connection Detail
(Screen not shown for clarity)

Note: for heights over 90" tall, multisection assemblies are required to have an additional structure provided by other. The design of that structure will be the responsibility of the engineer of record

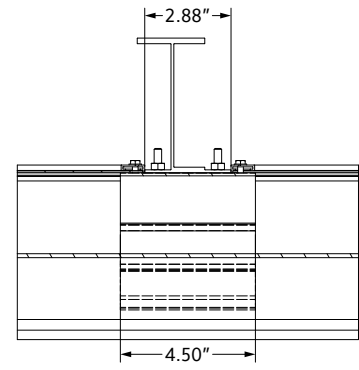


SECTION J-J

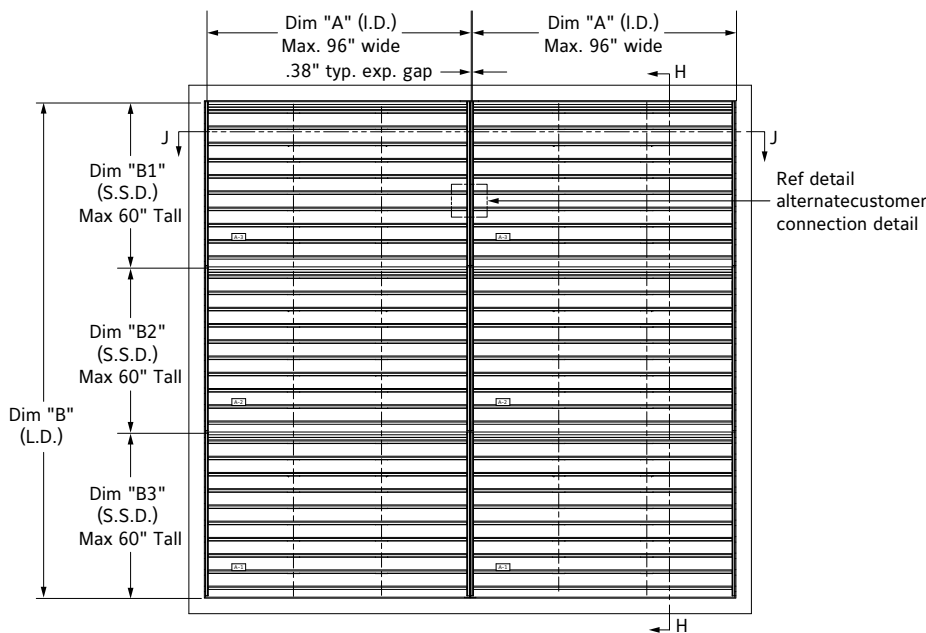


DETAIL Q

Horizontal mullion connection detail
(Bolt attaching at head/sill not shown for clarity)

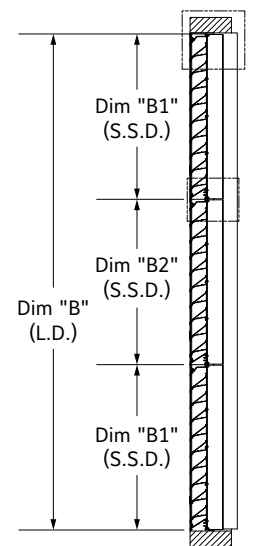


DETAIL J



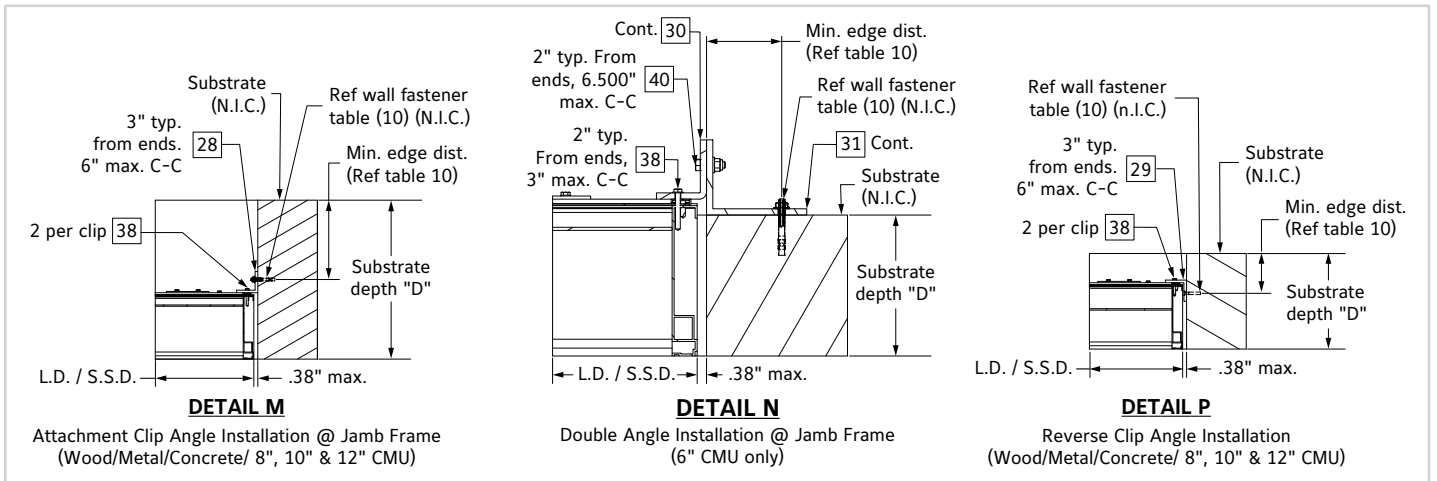
ASSEMBLY "B" - 100PSF WINDLOAD - JAMB ONLY ATTACHMENT

Max. Ship Section - 96.000" W X 60.000" H



SECTION H-H

100PSF UNLIMITED WIDTH X UNLIMITED HEIGHT



TABLE

ELF6375DXD - PARTS LIST FOR STANDARD CONSTRUCTION

ITEM #	DESCRIPTION	REF. DWG.	PART #
13	SCR 10 X 1.0 HWH TEK	-	380430941
20	SPL KIT 2 X 4 X .125 PLATE W/4 #10 X 1 TEK	85-021546-00B	360437326
21	FSNR KIT 3/8-16 X 3.00" LG. BOLT FW LOCKNUT	-	360500675
28	CLIP ANG 2 X 2 X 1/4 X 2 LG AL (W/2 .25 X .63 SLOTS)	85-022012-00B	360502443
29	CLIP ANG 2 X 4 X .25 X 2 LG CNTR SUNK	TBD	TBD
30	CLIP ANGLE - CMU INSTALL - FORMED, CONT.	85-023257-00B	800501158
31	CLIP ANGLE - CMU INSTALL, 4 X 3 X 1/4 THK. X CONT.	85-023258-00B	342379M00
32	ALTERNATE ATTACHMENT CLIP ANGLE, 6" LG.	85-023260-00B	36523600
33	CLIP ANGLE - CMU INSTALL - FORMED, 2" LG	85-023250-00B	VARIES
34	CLIP ANGLE - CMU INSTALL, 4 X 3 X 1/4 THK. X 4" LG.	85-023253-00B	36523500
35	CLIP ANGLE - CMU INSTALL - FORMED, 6" LG	85-023252-00B	VARIES
36	STRUCTURAL ANGLE - CMU INSTALL, 6 X 4 X 3/8 THK. X 15" LG.	85-023251-00B	36523000
37	CLIP ANG 2 X 4 X .25 X 6" LG CNTR SUNK	TBD	TBD
38	SCR 10 X 1.5 HWH TEK	-	380430830
39	FSNR KIT 3/8-16 X 2" LG BOLT FW LOCKNUT	-	360437319
40	FSNR KIT 1/4-20 X 1.5" LG BOLT FW LOCKNUT	-	360437314

TABLE

TABLE 10 - ELF6375DXD 100PSF - WALL FASTENER TABLE (N.I.C.) UNLIMITED BY UNLIMITED - JAMB ONLY CONNECTION

SUBSTRATE TYPE	MIN. SUBSTRATE REQUIREMENTS	FASTENER TYPE	MIN. EMBEDMENT	MIN. EDGE DISTANCE (STANDARD/ REVERSE)	MIN. WALL DEPTH	
					STANDARD ANGLE	REVERSE ANGLE
WOOD	SPECIFIC GRAVITY = 0.4	1/4" Ø BOLT, A307 WASHER & LOCKNUT	N/A	2 1/2"	9 1/2"	6"
STEEL & ALUMINUM	STEEL - MIN. 14 GA ALUM. - MIN. 1/8" THICK	1/4" Ø A307 BOLT OR TEK SCREW	N/A	1"	8"	6"
CONCRETE	3000 PSI MIN. COMPRESSIVE STRENGTH	1/4" Ø X 2 1/4" HILTI KWIK CON II+ W / WASHER	1 3/4"	2 1/2"	9 1/2"	6"
GROUT FILLED CMU (SINGLE ANGLE)	ASTM C-90 BLOCK, 1500 PSI GROUT COMP. STRENGTH.	1/4" Ø X 2 1/2" HILTI KWIK HUS EZ W / WASHER	1 5/8"	4"	11"	8"
GROUT FILLED CMU (DOUBLE ANGLE)	ASTM C-90 BLOCK, 1500 PSI GROUT COMP. STRENGTH	1/4" Ø X 1 1/4" HILTI KWIK CON II+	1"	3"	6"	-

TABLE 11 - ELF6375DXD 100PSF - WALL FASTENER TABLE (N.I.C.) UNLIMITED WIDTH BY 90" H - PERIMETER CONNECTION

SUBSTRATE TYPE	MIN. SUBSTRATE REQUIREMENTS	LOCATION	FASTENER TYPE	MIN. EMBEDMENT	MIN. EDGE DISTANCE (STANDARD/ REVERSE)	MIN. WALL DEPTH	
						STANDARD ANGLE	REVERSE ANGLE
WOOD	SPECIFIC GRAVITY = 0.4	JAMB	1/4" Ø BOLT, WASHER & LOCKNUT	N/A	2 1/2"	9 1/2"	6"
		HEAD/SILL	3/8" Ø A307 BOLT, WASHER & LOCKNUT	N/A	2 1/2"	9 1/2"	6"
STEEL & ALUMINUM	STEEL - MIN. 14 GA ALUM. - MIN. 1/8" THICK	JAMB	1/4" Ø A307 BOLT OR TEK SCREW	N/A	1"	8"	6"
		HEAD/SILL	3/8" Ø A307 BOLT, LOCKNUT & 1" WASHER	N/A	1"	8"	6"
CONCRETE	3000 PSI MIN. COMPRESSIVE STRENGTH	JAMB	1/4" Ø X 2 1/4" HILTI KWIK CON II+ W / WASHER	1 3/4"	2 1/2"	9 1/2"	6"
		HEAD/SILL	3/8" Ø HILTI KWIK BOLT TZ EXPANSION ANCHORS	2 1/2"	3 1/2"	10 1/2"	6 1/2"
GROUT FILLED CMU (SINGLE ANGLE)	ASTM C-90 BLOCK, 1500 PSI GROUT COMP. STRENGTH.	JAMB (SINGLE ANGLE)	1/4" Ø X 2 1/2" HILTI KWIK HUS EZ W / WASHER	1 5/8"	4"	11"	8"
		JAMB (DOUBLE ANGLE)	1/4" Ø X 1 1/4" HILTI KWIK CON II+ (2) PER CLIP	1"	3"	6"	-
		HEAD/SILL	3/8" Ø HILTI KWIK BOLT III EXPANSION ANCHORS	2 1/2"	4"	6"	-

TABLE

TABLE 12 - ELF6375DXD - DEFAULT INSTALLATION TYPE - JAMB ONLY INSTALL

SUBSTRATE TYPE	WALL DEPTH RANGE	INSTALL TYPE	REFERENCE SHEET
WOOD	6" - 9 1/2"	REVERSE ANGLE	DETAIL P
	> 9 1/2"	STANDARD ANGLE	DETAIL M
STEEL & ALUMINUM	6" - 8"	REVERSE ANGLE	DETAIL P
	> 8"	STANDARD ANGLE	DETAIL M
CONCRETE	6" - 9 1/2"	REVERSE ANGLE	DETAIL P
	> 9 1/2"	STANDARD ANGLE	DETAIL M
GROUT FILLED CMU	6" - 8"	DOUBLE ANGLE	DETAIL N
	> = 8" - 11"	REVERSE ANGLE	DETAIL P
	> 11"	STANDARD ANGLE	DETAIL M

i LINKS TO IMPORTANT DOCUMENTS

Document Title

Limited Warranty Document



3900 Doctor Greaves Road
Grandview, MO 64030
Website: www.ruskin.com
Phone: (816) 761-7476