



3900 Dr. Greaves Rd. • Kansas City, MO 64030 • (816) 761-7476 • FAX (816) 765-8955

**XP500 FEMA LOUVER  
CHEVRON BLADE FEMA 361 GRILLE**

**STANDARD CONSTRUCTION**

**FRAME**

2" x 5 1/2" x 2" (51 x 140 x 51) channel 1/4" (6) Thick Extruded Aluminum.

**BLADES**

3" x 3" x 1/4" (75 x 75 x 6) Thick Chevron Style Extruded Aluminum.

**BIRD SCREEN**

5/8" x .040" (16 x 1.) expanded flattened aluminum bird screen in removable frame. Screen adds approximately 1/2" (13) to louver depth. Screen required to meet spawling component to FEMA 361 standards.

**FINISH**

Mill.

**MINIMUM SIZE**

12"w x 12"h (305 x 305).

**APPROXIMATE SHIPPING WEIGHT**

13 lbs. per sq. ft. (193.5 kg/m<sup>2</sup>)

**MAXIMUM SHIPPING SECTION SIZE**

For 300 psf 48"w x 78"h (1220 x 1982)

For 230 psf 48"w x 90"h (1220 x 2286)

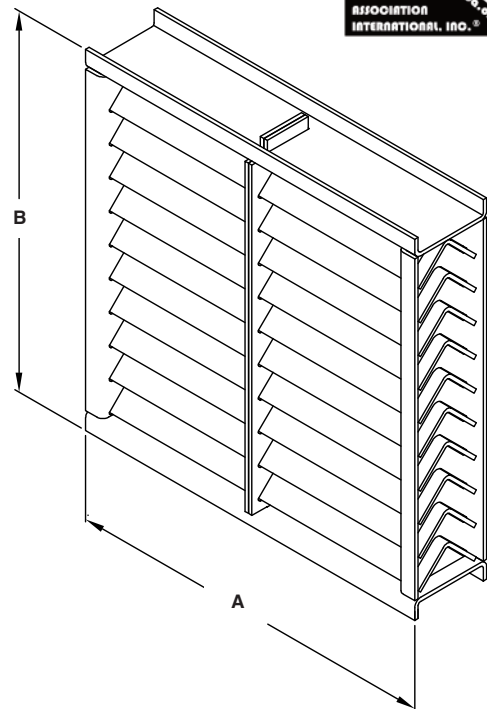
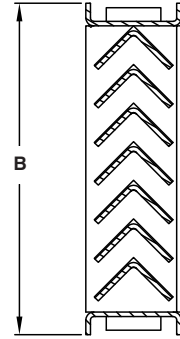
For 200 psf 48"w x 96"h (1220 x 2439)

**MAXIMUM OVERALL ASSEMBLY SIZE**

Unlimited width x one section tall.

**FEATURES**

- Louver complies with FEMA 361 Design and Construction for Community Shelters, Zone IV criteria, 250 MPH wind, 15 lb. 2x4 impact at 100 mph for Tornado's.
- Louver complies with FEMA 361 Design and Construction for Community Shelters, Zone IV criteria, 230 MPH wind, 15 lb. 2x4 impact at 100 mph for Hurricanes.
- Louver mounted externally in combination with wall louver or by itself internally (See attached).
- 46% Free Area.
- Optional finishes available at additional cost: prime coat, 50% and 70% PVDF (modified fluoropolymer), epoxy, Acrodize.
- This product is Listed to applicable UL Standards and Requirements.



Dimensions in inches, parenthesis ( ) indicate millimeters.

\*Units furnished 1/4" (6) smaller than given opening.

TAG	QTY.	SIZE		VARIATIONS
		A*-WIDE	B*-HIGH	
<b>PROJECT</b>		<b>LOCATION</b>		
<b>ARCH./ENGR.</b>		<b>CONTRACTOR</b>		
<b>REPRESENTATIVE</b>		<b>DATE</b>		

# FREE AREA GUIDE

Free Area Guide shows free area in ft<sup>2</sup> and m<sup>2</sup> for various sizes of XP500.

Width – Inches and Meters

Height – Inches and Meters	12	18	24	30	36	42	48
	0.30	0.46	0.61	0.76	0.91	1.07	1.22
12	0.27	0.44	0.62	0.67	0.85	1.02	1.19
0.30	0.03	0.04	0.06	0.06	0.08	0.09	0.11
18	0.50	0.81	1.12	1.23	1.54	1.85	2.17
0.46	0.05	0.08	0.10	0.11	0.14	0.17	0.20
24	0.69	1.13	1.57	1.72	2.16	2.59	3.03
0.61	0.06	0.11	0.15	0.16	0.20	0.24	0.28
30	0.94	1.54	2.13	2.33	2.93	3.52	4.12
0.76	0.09	0.14	0.20	0.22	0.27	0.33	0.38
36	1.19	1.94	2.69	2.94	3.70	4.45	5.20
0.91	0.11	0.18	0.25	0.27	0.34	0.41	0.48
42	1.44	2.35	3.26	3.56	4.47	5.37	6.28
1.07	0.13	0.22	0.30	0.33	0.41	0.50	0.58
48	1.67	2.72	3.78	4.13	5.19	6.24	7.29
1.22	0.16	0.25	0.35	0.38	0.48	0.58	0.68
54	1.85	3.02	4.19	4.58	5.75	6.92	8.09
1.37	0.17	0.28	0.39	0.43	0.53	0.64	0.75
60	2.10	3.43	4.75	5.19	6.52	7.85	9.17
1.52	0.20	0.32	0.44	0.48	0.61	0.73	0.85
66	2.35	3.83	5.31	5.81	7.29	8.77	10.26
1.68	0.22	0.36	0.49	0.54	0.68	0.81	0.95
72	2.60	4.23	5.87	6.42	8.06	9.70	11.34
1.83	0.24	0.39	0.55	0.60	0.75	0.90	1.05
78	2.84	4.64	6.44	7.03	8.83	10.63	12.42
1.98	0.26	0.43	0.60	0.65	0.82	0.99	1.15
84	3.07	5.00	6.94	7.59	9.52	11.46	13.40
2.13	0.28	0.46	0.64	0.70	0.88	1.06	1.24
90	3.26	5.31	7.37	8.06	10.11	12.17	14.23
2.29	0.30	0.49	0.68	0.75	0.94	1.13	1.32
96	3.50	5.72	7.93	8.67	10.88	13.10	15.31
2.44	0.33	0.53	0.74	0.81	1.01	1.22	1.42

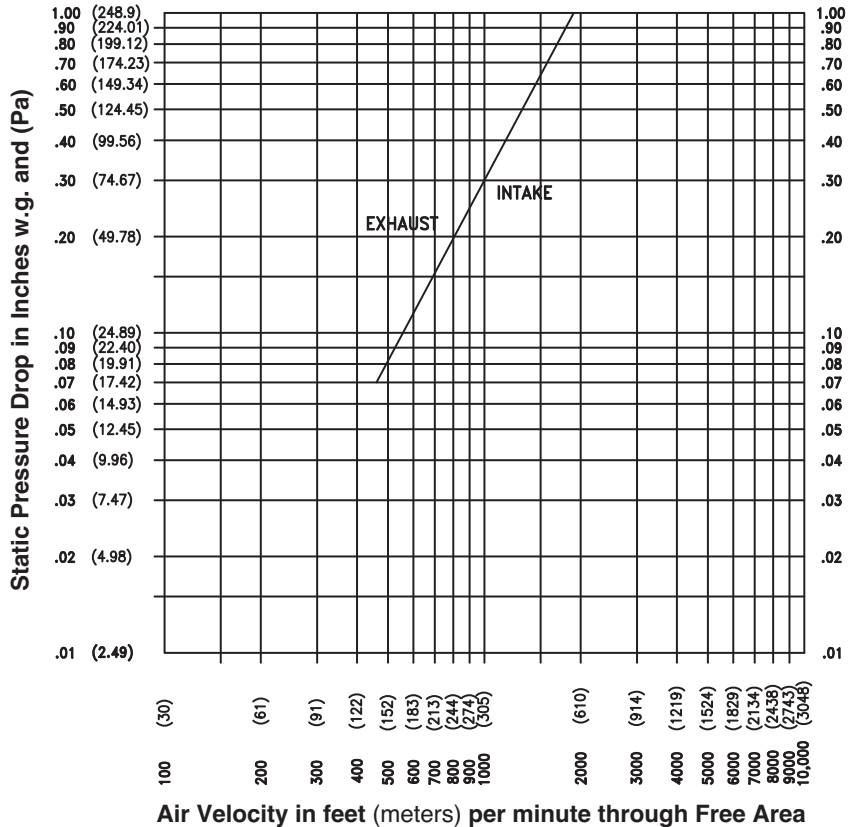
## WATER PENETRATION

Test size 48" w x 48" h (1219 x 1219)  
Beginning point of water penetration  
at .01 oz./sq. ft. is 535 fpm (163 m/s).

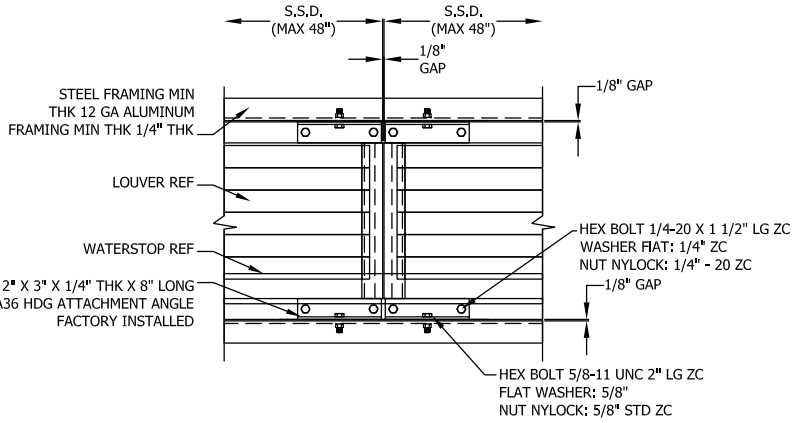
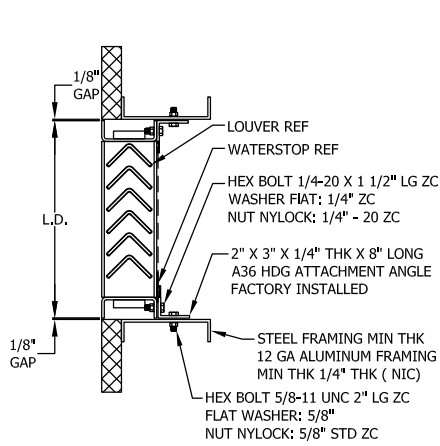


Ruskin Manufacturing Company certifies that the XP500 Louvers shown herein are licensed to bear the AMCA Seal. The ratings shown are based on tests and procedures performed in accordance with AMCA Publication 511 and comply with the requirements of the AMCA Certified Ratings Program. The AMCA Certified Ratings Seal applies to air performance ratings and water penetration ratings only.

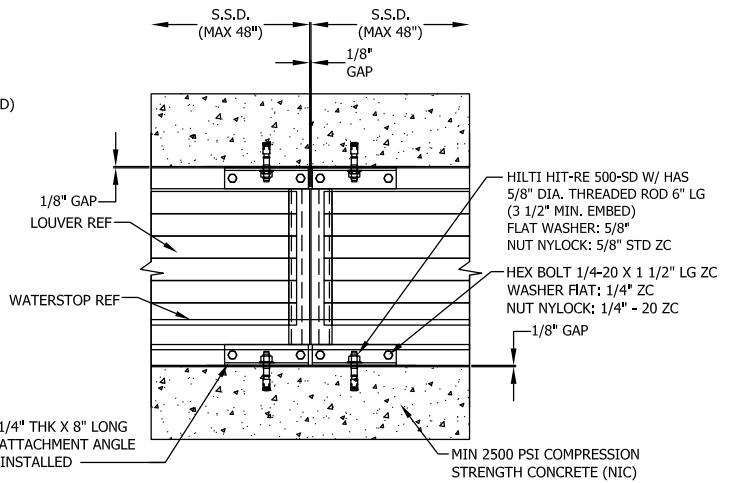
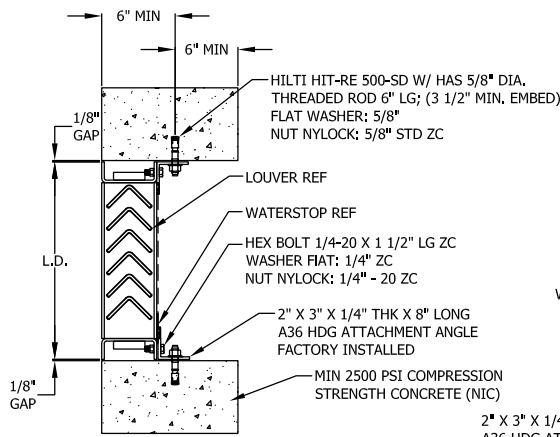
## PRESSURE DROP DATA



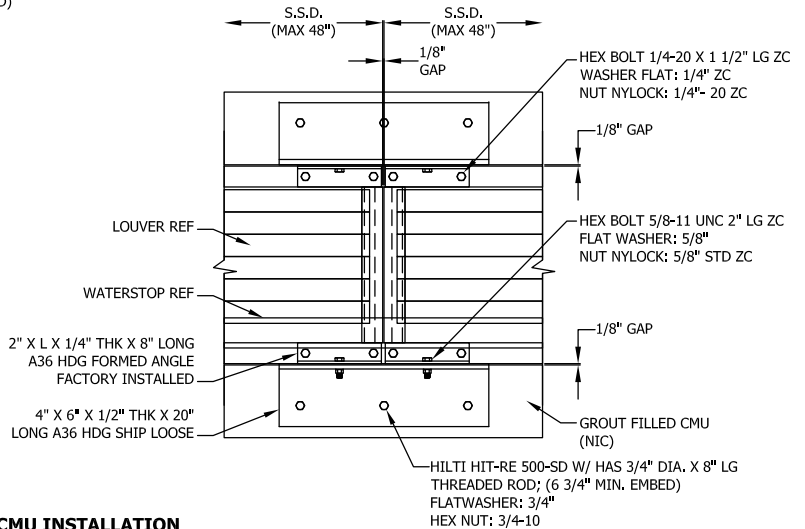
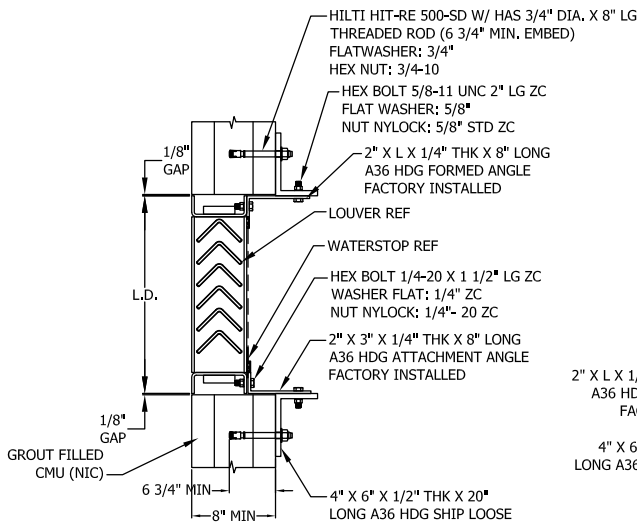
# INSTALLATION DETAILS



## STEEL INSTALLATION



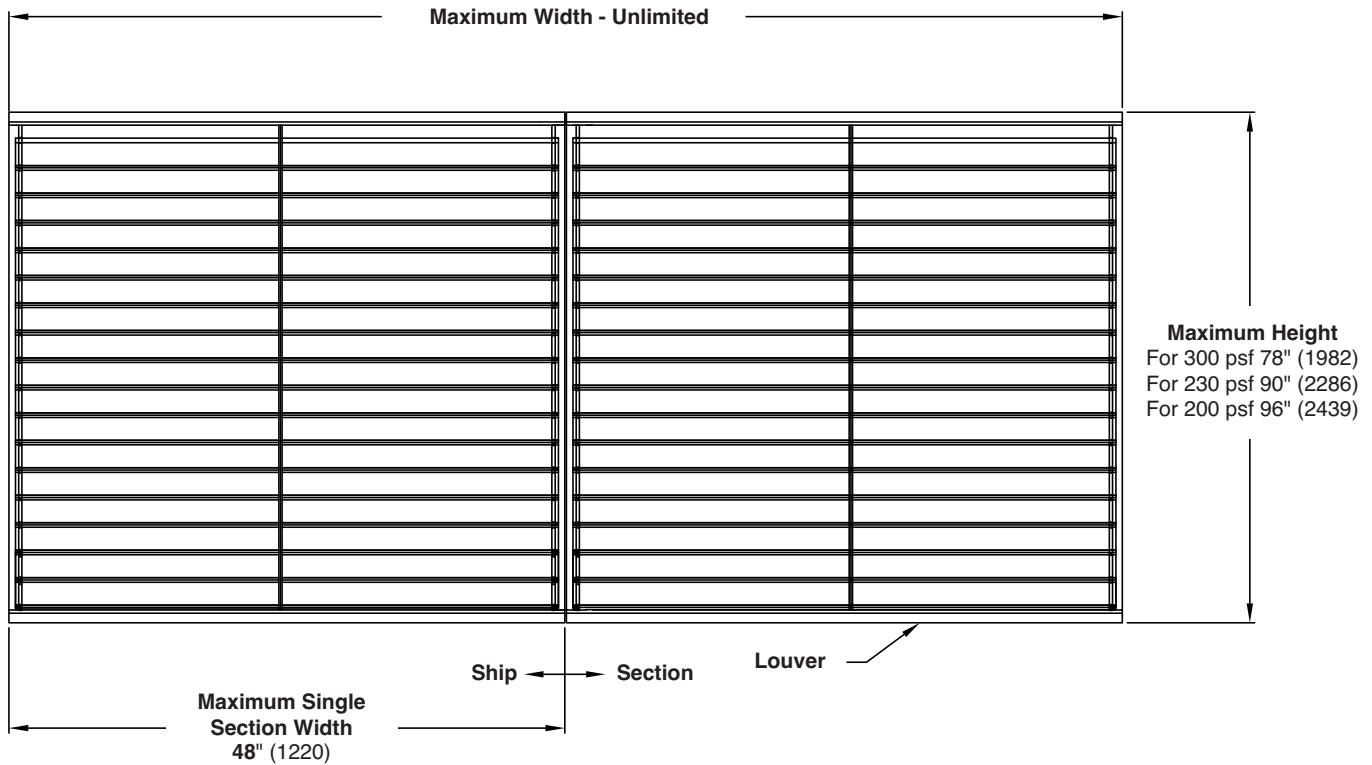
## CONCRETE INSTALLATION



## CMU INSTALLATION

# CONSTRUCTION INFORMATION

## SHIP SECTION INFORMATION



1. Reference separate installation instruction sheets for installation details. It is the responsibility of the installing contractor to properly install the louvers per the appropriate detail.
2. On special orders, Ruskin may provide submittal and/or shop drawings. Reference these drawings for additional installation information.
3. Louvers wider than the maximum single section width will be shipped in multiple sections and will require field assembly. Field assembly is not by Ruskin.



3900 Dr. Greaves Rd.  
Kansas City, MO 64030  
(816) 761-7476  
FAX (816) 765-8955  
www.ruskin.com