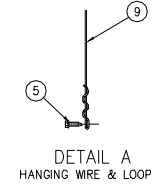
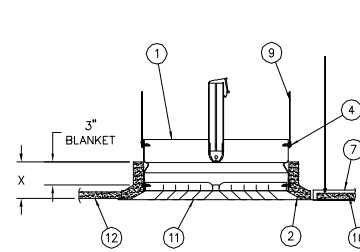
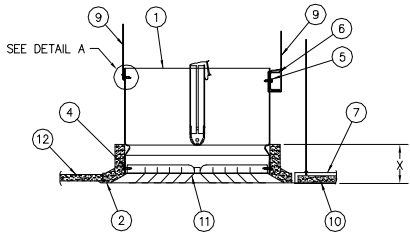


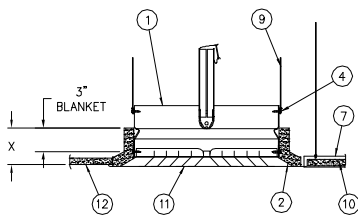
INSTALLATION 3
STANDARD ASSEMBLY HEIGHTS
DAMPERS LESS THAN 12" DIA OR 113 SQ IN



INSTALLATION 4
STANDARD ASSEMBLY HEIGHTS
DAMPERS LARGER THAN 12" DIA. OR 113 SQ IN



INSTALLATION 5
EXTENDED ASSEMBLY HEIGHTS
DAMPERS LARGER THAN 12" DIA. OR 113 SQ IN



| ITEM | DESCRIPTION |
|------|---|
| 1. | DAMPER |
| 2. | GRILLE FRAME (STEEL) |
| 3. | DUCT (STEEL FOR INSTALLATION USING DUCT SUPPORT, METALLIC OR NON-METALLIC FOR INSTALLATION 2 USING DAMPER SUPPORT) |
| 4. | #8 SHEET METAL SCREW, 3/16" STEEL RIVETS OR 1/4" TACKWELDS |
| 5. | #10 SHEET METAL SCREW |
| 6. | 16 MSG X 1 1/2" CHANNEL |
| 7. | CEILING GRID (UL CLASSIFIED) |
| 8. | DUCT DROP (STEEL FOR INSTALLATION USING DUCT SUPPORT, METALLIC OR NON-METALLIC FOR INSTALLATION 2 USING DAMPER SUPPORT) |
| 9. | 12 SWG STEEL WIRE |
| 10. | ACOUSTICAL LAY-IN PANELS (UL CLASSIFIED) |
| 11. | DIFFUSER OR GRILLE CORE (METALLIC OR NON-METALLIC) |
| 12. | RIGID GYPSUM WALL BOARD CEILING |
| 13. | 16 SWG STEEL WIRE |

