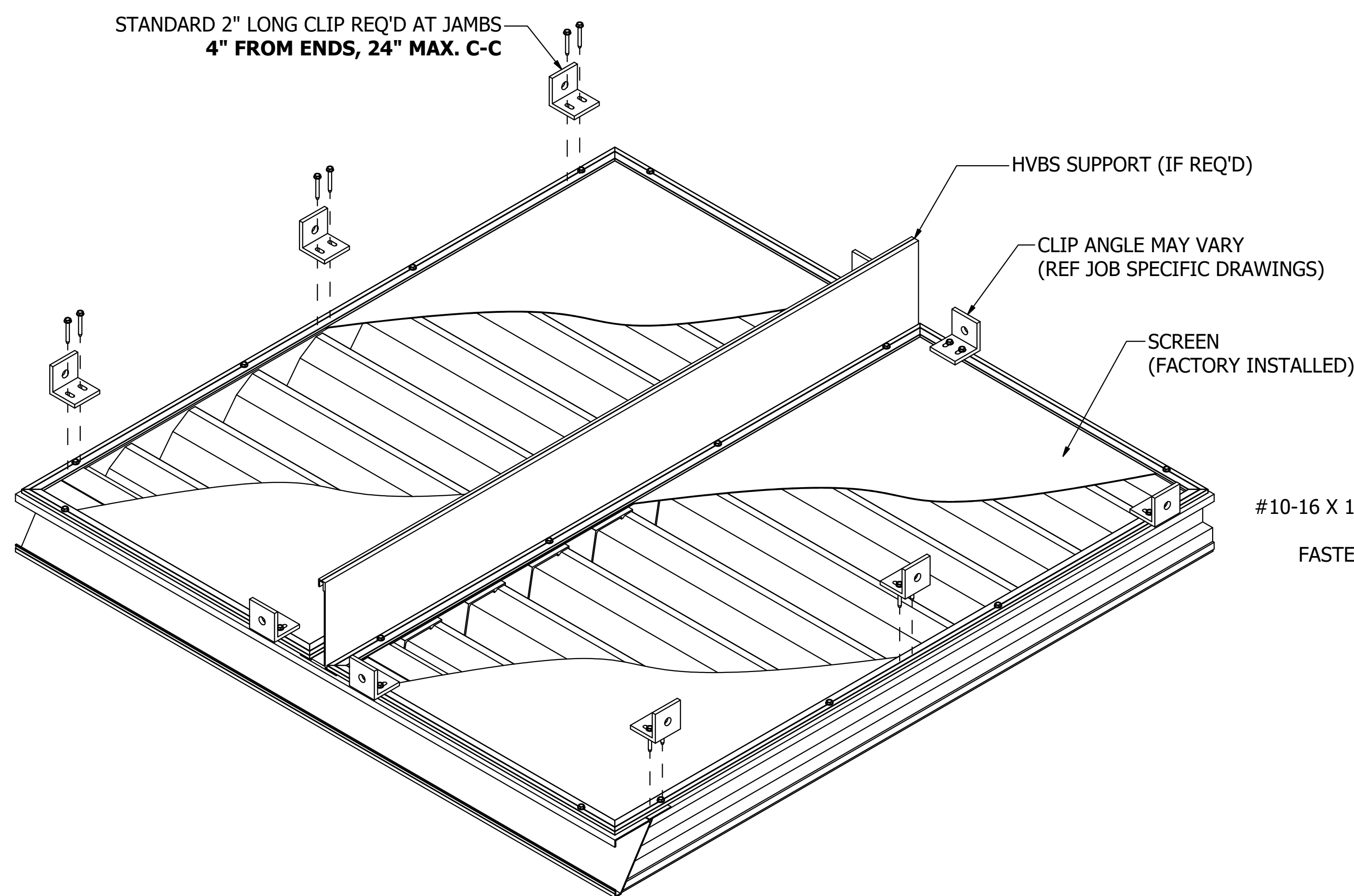
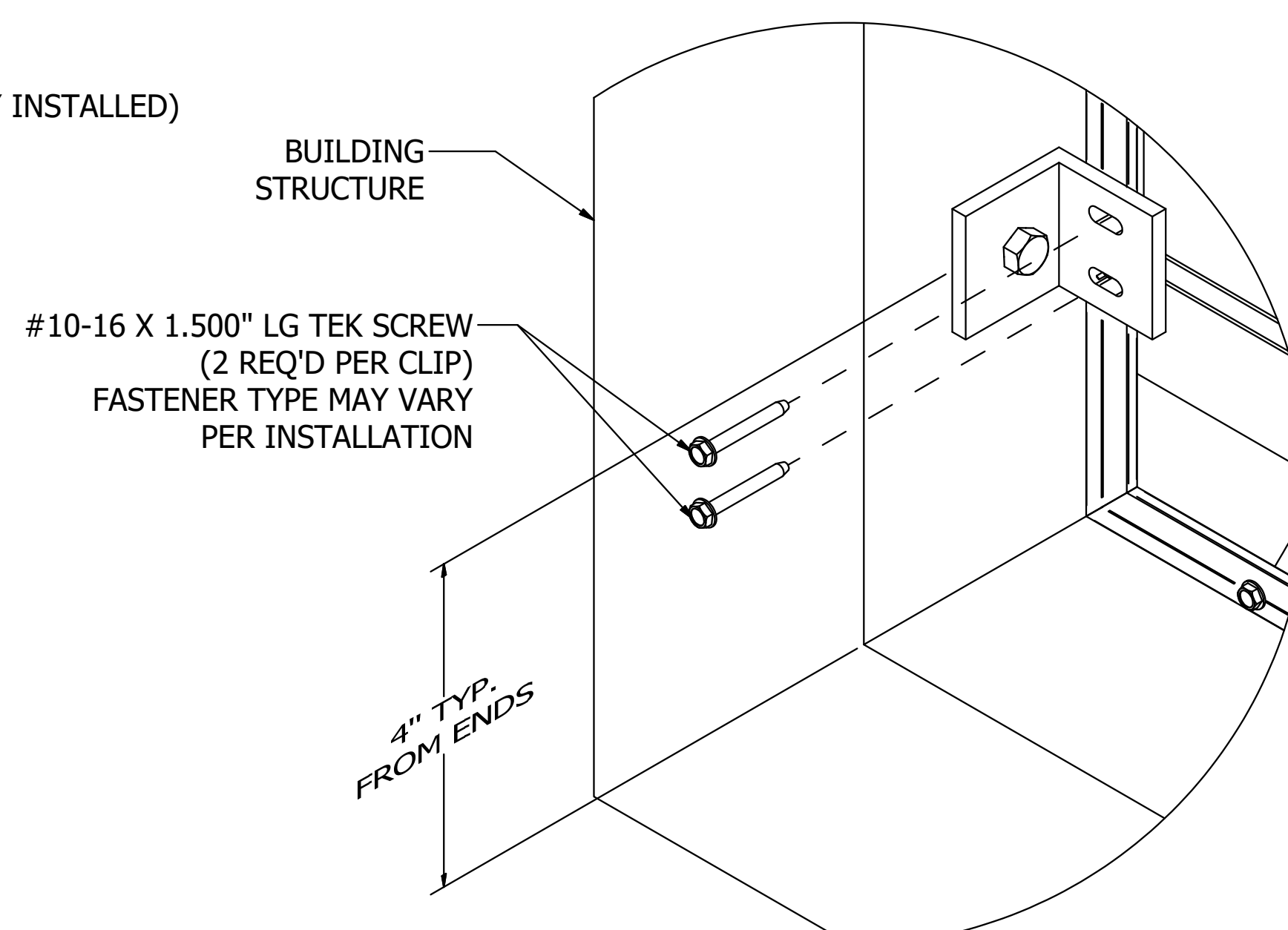


**CLIP ANGLE INSTALLATION - HORIZONTAL BLADE LOUVERS
(WITHOUT HVBS SUPPORT)**



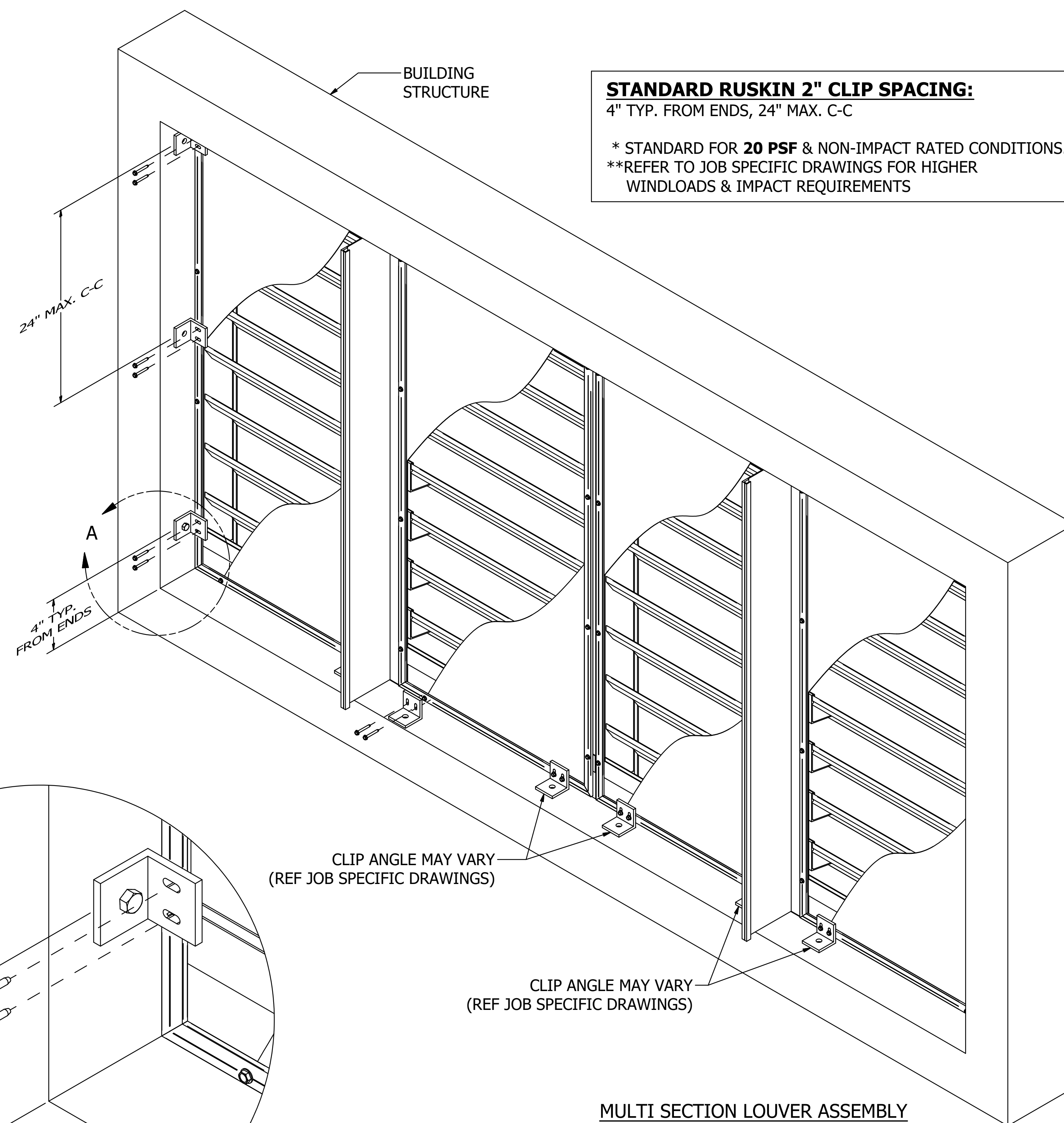
**CLIP ANGLE INSTALLATION - HORIZONTAL BLADE LOUVERS
(WITH HVBS SUPPORT)**



**DETAIL A
CLIP ANGLE INSTALLATION DETAIL**

ASSEMBLY PROCEDURE:

1. MAKE SURE YOU RECIEVED A **SHIP LOOSE KIT** WITH CLIP ANGLES, FASTENERS (REFERENCE BOX MARKED HARDWARE) & CLIP ANGLE INSTALLATION GUIDE
2. REFER TO SHOP DRAWINGS TO DETERMINE SET BACK OF CLIP ANGLES ON JAMB/HEAD/SILL IN RELATION TO WALL.
3. NOW MEASURE SET BACK DISTANCE OF CLIP ANGLES FROM WALL AND DRILL HOLES INTO WALL AS NEEDED.
4. ATTACH CLIP ANGLES TO WALL WITH SUBSTRATE FASTENERS. (SUBSTRATE FASTENERS NOT PROVIDED BY RUSKIN)
5. NOW PLACE LOUVER SECTION INTO OPENING.
6. SHIM AROUND LOUVER PERIMETER TO PROVIDE PROPER CLEARANCE/DEDUCT AS MENTIONED IN SHOP DRAWINGS.
7. ONCE CLEARANCE SPECIFICATIONS ARE MET, USE HOLES PROVIDED IN CLIP ANGLE TO DRILL PILOT HOLES IN JAMB.
8. NOW FASTEN JAMB TO CLIP ANGLES WITH FASTENERS AS PROVIDED BY RUSKIN (SHIP LOOSE KIT)
9. REFER SHOP DRAWINGS TO ATTACH CLIPS AT HVBS & MULLION SUPPPORTS.



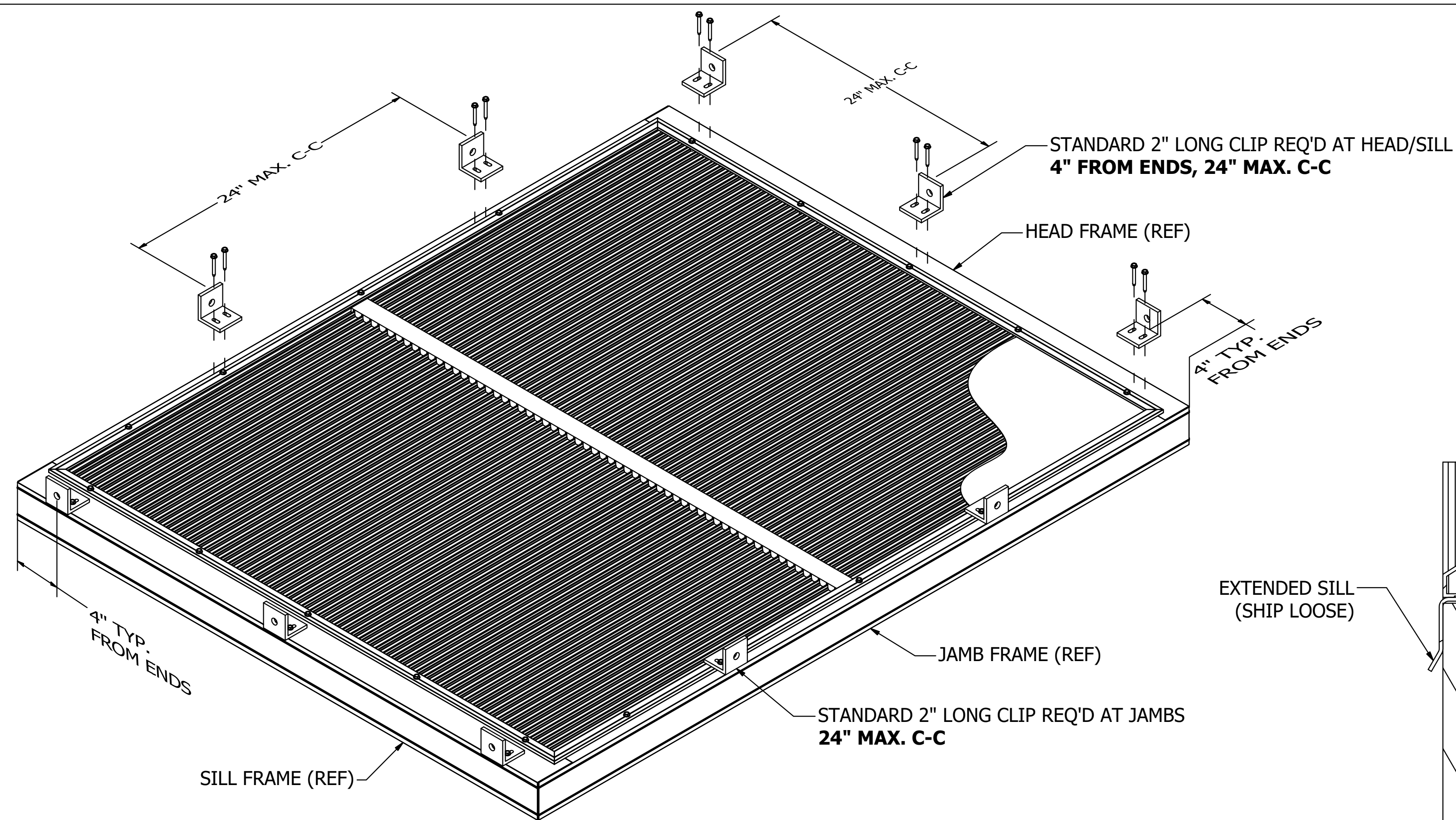
STANDARD RUSKIN 2" CLIP SPACING:

4" TYP. FROM ENDS, 24" MAX. C-C

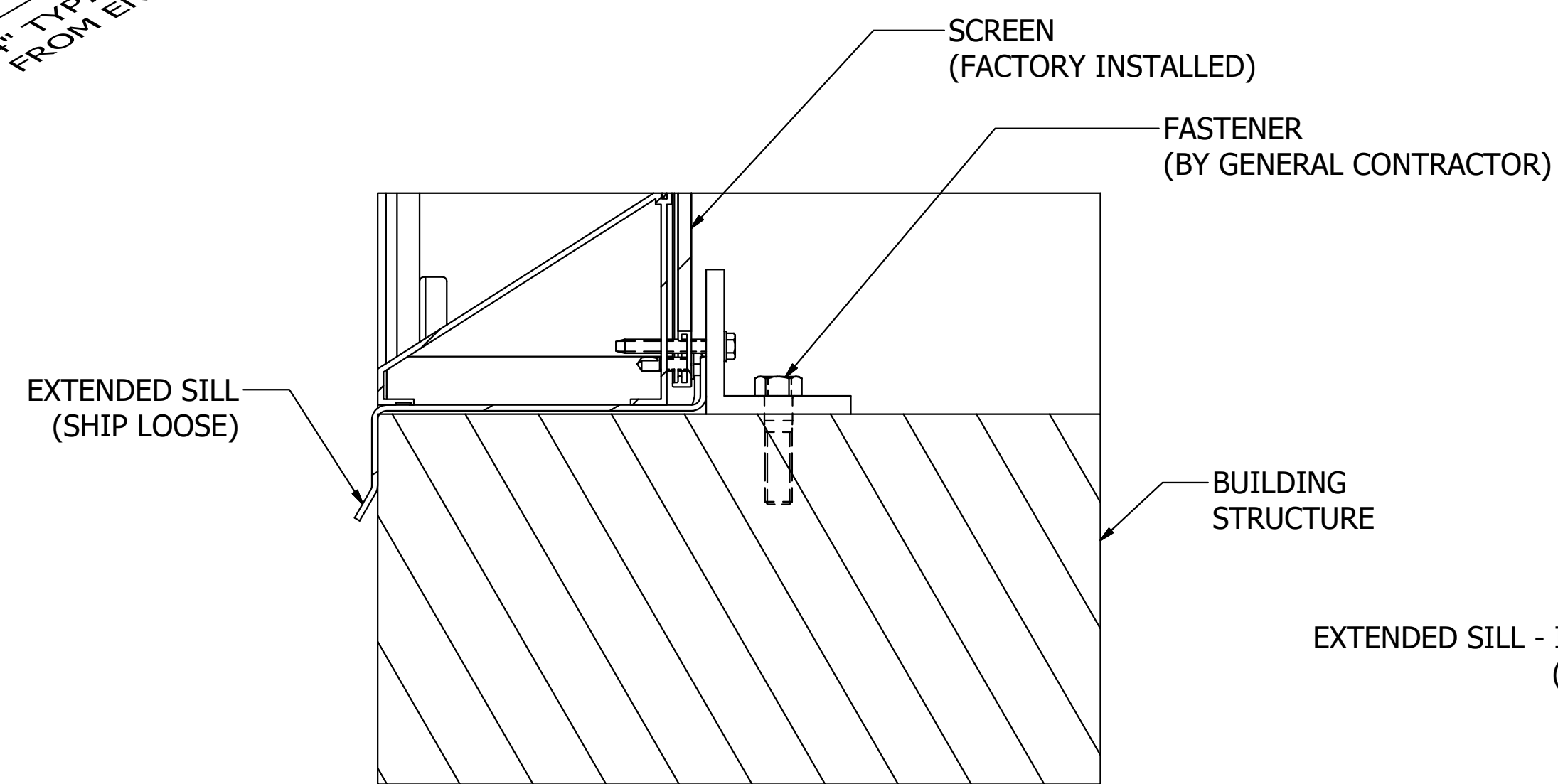
* STANDARD FOR **20 PSF** & NON-IMPACT RATED CONDITIONS.
**REFER TO JOB SPECIFIC DRAWINGS FOR HIGHER
WINDLOADS & IMPACT REQUIREMENTS

**MULTI SECTION LOUVER ASSEMBLY
(SHOWN AS 2X1)**

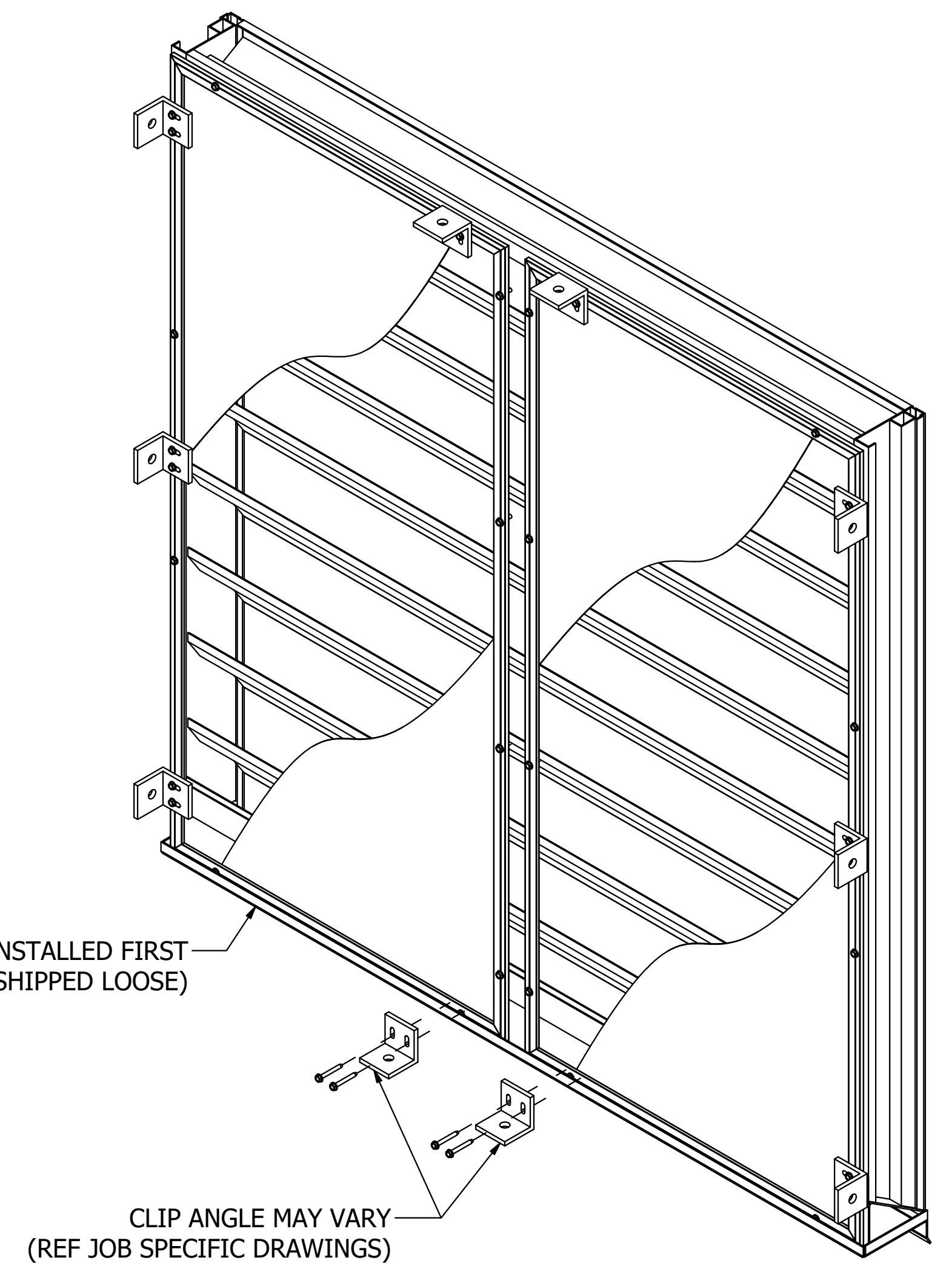
AUTHOR	NS	8/30/2019	 3900 Doctor Greaves Rd, Grandview, MO 64030 PROPRIETARY AND CONFIDENTIAL
CHECKED	WRT	9/5/2019	
APPROVED	WRT	9/6/2019	
MATERIAL			
			PRODUCT
			TITLE
			STANDARD CLIP ANGLE INSTALLATION GUIDE
			SIZE
			D
			DWG NO
			60-022526-00D
			REV
			SCALE
			NONE
			INVENTOR
			SHEET 1 OF 2



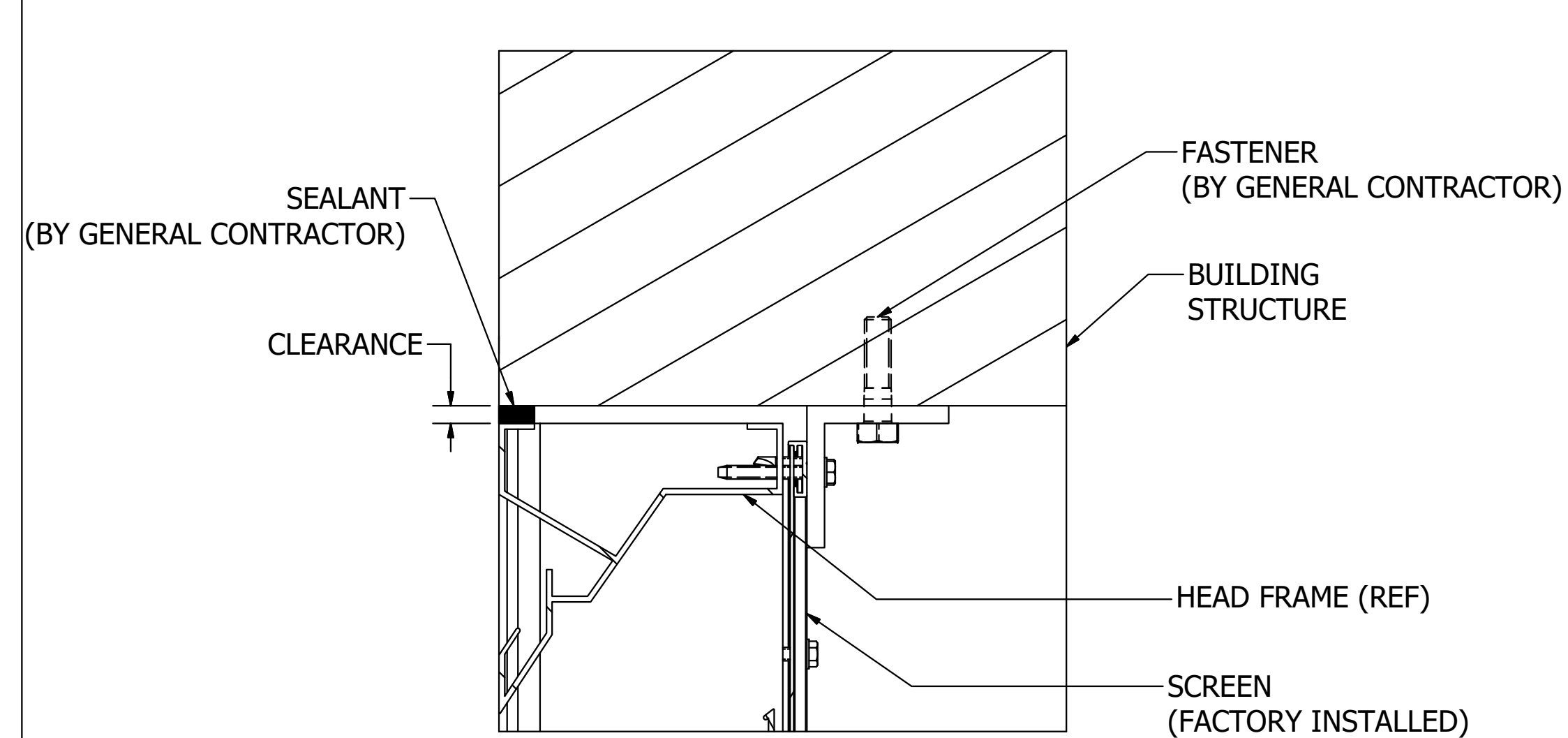
CLIP ANGLE INSTALLATION - VERTICAL BLADE LOUVERS



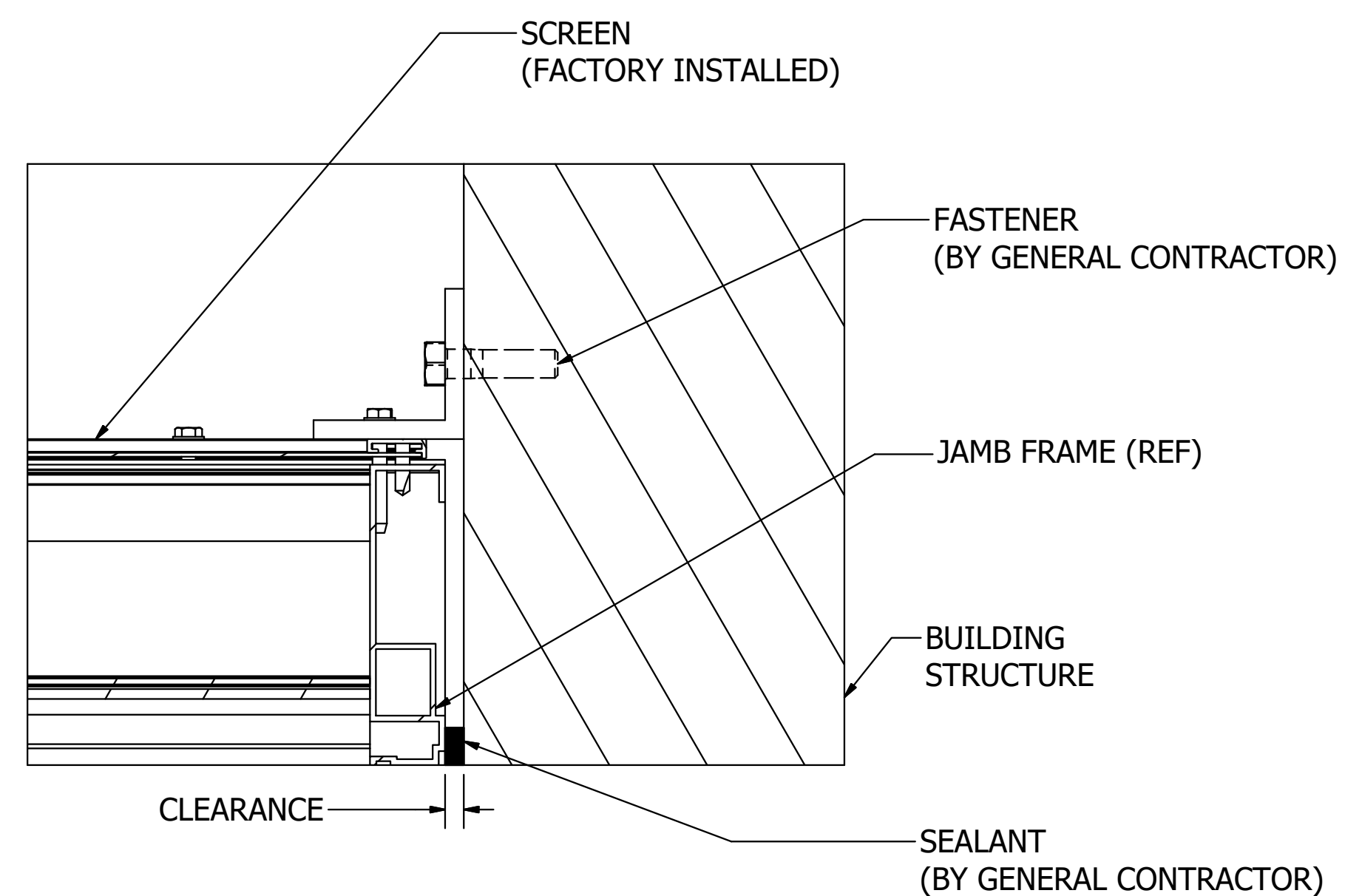
CLIP ANGLE INSTALLATION W EXTENDED SILL



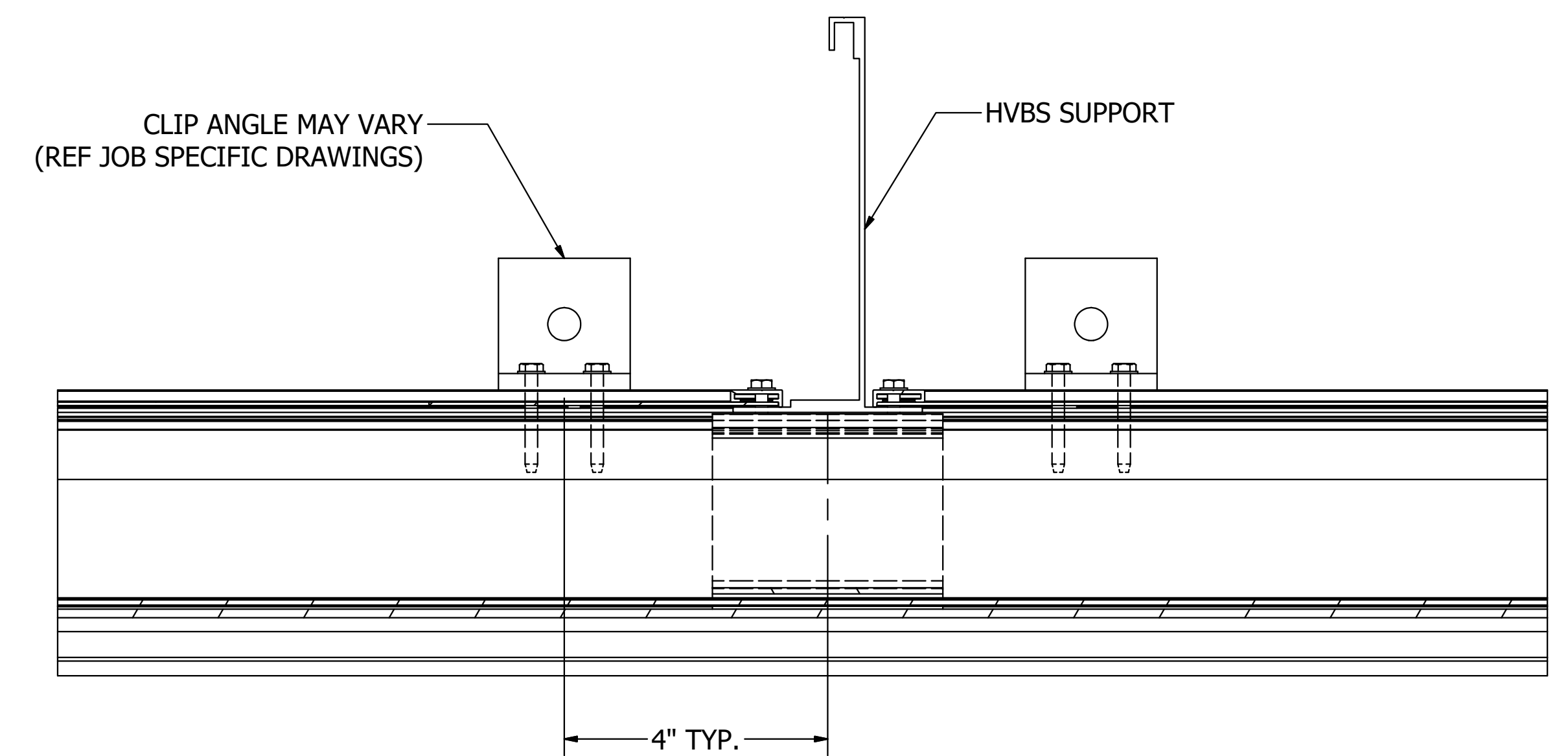
CLIP ANGLE INSTALLATION W EXTENDED SILL
(SUPPORTS NOT SHOWN FOR CLARITY)



CLIP ANGLE INSTALLATION @ HEAD/SILL



CLIP ANGLE INSTALLATION @ JAMBS



CLIP ANGLE INSTALLATION @ SUPPORTS

AUTHOR	NS	8/30/2019	 3900 Doctor Greaves Rd, Grandview, MO 64030 PROPRIETARY AND CONFIDENTIAL
CHECKED	WRT	9/5/2019	
APPROVED	WRT	9/6/2019	
MATERIAL			
TITLE			STANDARD CLIP ANGLE INSTALLATION GUIDE
SIZE	D	DWG NO	60-022526-00D
SCALE	NONE	INVENTOR	SHEET 2 OF 2