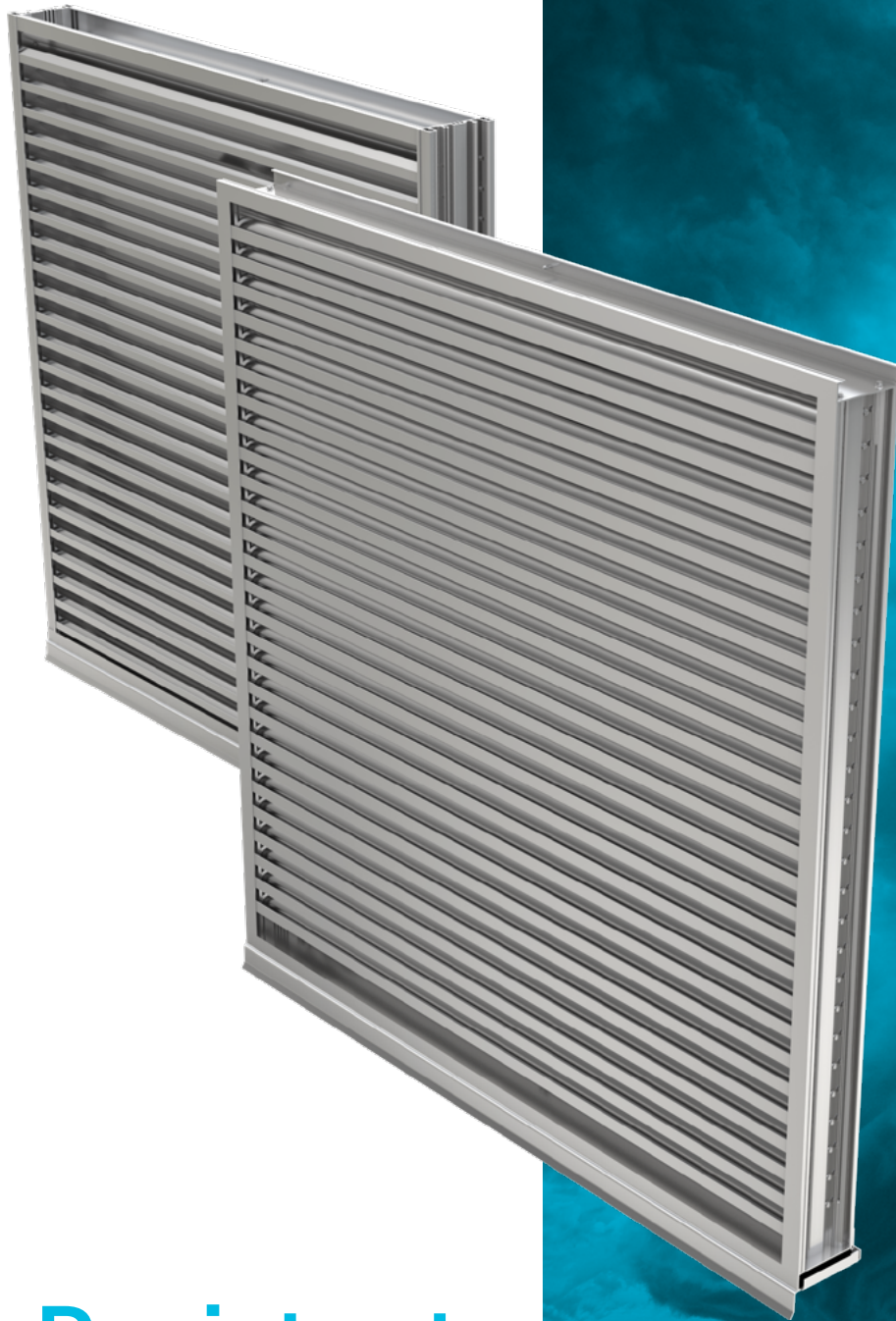


EME420DDE / EME520DDE

RUSKIN
AUTHORITY IN AIR CONTROL



**Impact Resistant
Louvers**

WIND-DRIVEN, RAIN RESISTANT

The **Ruskin® EME420DDE and EME520DDE** wind-driven rain resistant louvers are qualified to the Air Movement and Control Association (AMCA) 540 Missile Level E Impact Test (55 mph impact). The models are ideal for applications located in hurricane-prone regions along the U.S. Atlantic and Gulf of Mexico coasts, and Hawaii and Puerto Rico. These models also meet AMCA550 (high velocity, wind-driven rain) standards when combined with a CD50, CD40 or SD60 damper model.

FEATURES - EME420DDE

- ▶ Horizontal architectural blades minimize the penetration of wind-driven rain, reducing damage and additional operating expenses
- ▶ AMCA certified wind-driven rain results
- ▶ Published performance ratings based on testing in accordance with AMCA Publication 511
- ▶ 40% Free Area
- ▶ AMCA 540 Listed (Enhanced Protection)
- ▶ AMCA 550 Listed with damper in closed position

FEATURES - EME520DDE

- ▶ Closely spaced horizontal blades minimize the penetration of wind-driven rain, reducing damage and additional operating expenses
- ▶ Tested in the AMCA 500-L Wind-Driven Rain Penetration Test
- ▶ Published performance ratings based on testing in accordance with AMCA Publication 511
- ▶ 47% Free Area
- ▶ Excellent pressure drop performance
- ▶ AMCA 540 Listed (Enhanced Protection)
- ▶ AMCA 550 Listed with damper in closed position
- ▶ Florida Building Code Approval FL# 22554.1

EME420DDE



EME520DDE



HIGH VELOCITY RAIN
RESISTANT WITH BLADES
FULLY CLOSED AND
IMPACT RESISTANT LOUVER
Enhanced Protection Level E
See www.AMCA.org for all certified or listed products

This label does not imply
AMCA endorses performance
certification



EME420DDE/EME520DDE
Flyer04/20