

MCPB/MCP1.5

Test Switches Installation Supplement



APPLICATION

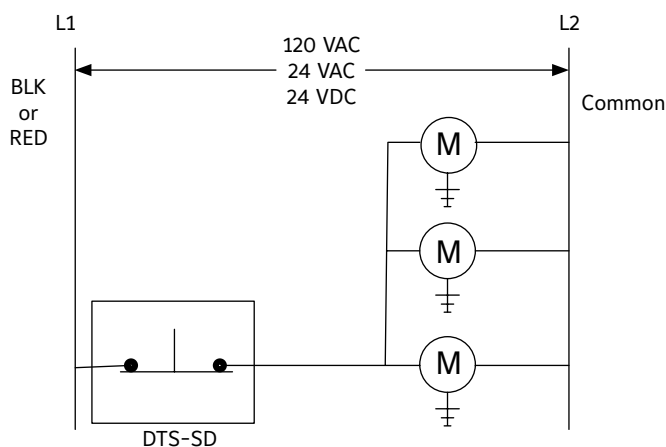
The MCPB is a momentary push button test switch and the MCP1.5 is toggle type "on/off" test switch. They are available as options to Ruskin fire/smoke dampers and smoke dampers. The MCPB and MCP1.5 enable easy maintenance by allowing the dampers to be tested and cycled by simply moving the toggle switch or holding the push button down. One MCPB or MCP1.5 is required per closure device.



MCPB

MCP1.5

WIRING DIAGRAM



Pneumatic actuators to be piped per local codes.
Electric actuators to be wired per the National
Electric Code (NEC) and local codes.
See actuator for wiring diagrams.

i LINKS TO IMPORTANT DOCUMENTS

Document Title

Limited Warranty Document



3900 Doctor Greaves Road
Grandview, MO 64030
Website: www.ruskin.com
Phone: (816) 761-7476