

# CFD7

## Installation Supplement

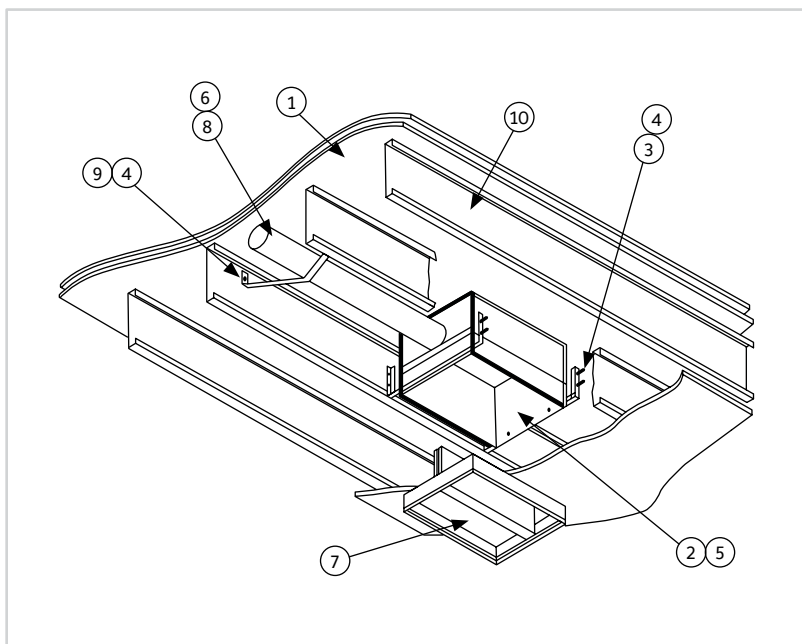
### Ceiling Design L524



## APPLICATION

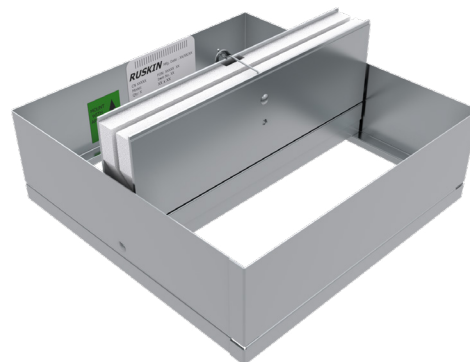
Ceiling fire dampers maintain the integrity of the fire resistive ceiling assembly. The floor/ceiling designs L524 is illustrated in the current UL Fire Resistance Directory.

ITEM	DESCRIPTION
1	Floor or roof assembly
2	Steel box minimum 24 gauge
3	3/4" x 3/4" 20 gauge mounting angle
4	Minimum #8 sheet metal screw or rivet
5	1/2" thick Thermal Blanket (all sides and top)
6	16 SWG steel wire, steel clamp or nylon zip tie
7	Ceiling damper assembly
8	Duct (if required)
9	24 gauge x 1" wide duct support on 24" centers
10	Steel joist



### NOTE:

- CFD's are shipped from the factory with the blades in the closed position. The fusible link must be installed to hold the blades in the open position at the time of installation.
- Screws, bolts, rivets, etc, **MUST NOT INTERFERE WITH BLADE OPERATION.**
- The ceiling damper and its components must be installed and supported as illustrated.
- Dimensions shown in parentheses ( ) indicate millimeters.



**Model CFD7 meets the requirements for fire/radiation dampers established by:**

- ▶ **National Fire Protection Association**  
NFPA Standards 80, 90A, 92A, 92B, and 101.
- ▶ **ICC International Building Codes**
- ▶ **CSFM California State Fire Marshal**  
Listing (3225-0245:0123)



SEE COMPLETE  
MARKING ON PRODUCT

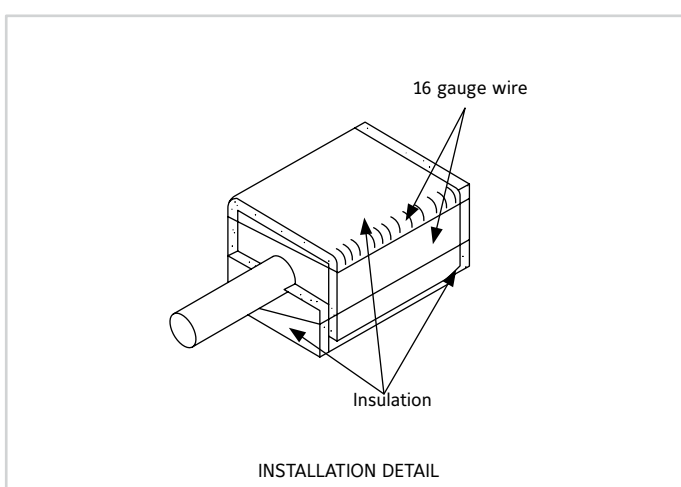
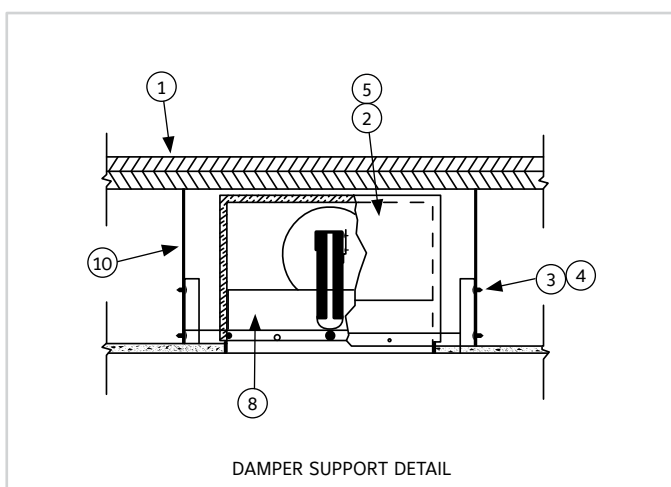
**UL CLASSIFIED**  
UL555C Listing R8039

## INSTALLATION

- ▶ Ceiling penetration should be located in between floor/ceiling or ceiling/roof joist. The opening in the gypsum board should have no gaps larger than 1/16" (1.5) between the damper frame and the gypsum board.
- ▶ Attach the 16 ga. x 1 1/2" (38) steel channels to the steel joist with #18 SWG wire (item #11).
- ▶ Support the damper by tying the #18 SWG wire to the steel channel. Then loop the other end of the wire around #8 screw into the bottom of the damper.
- ▶ Wrap the damper assembly with 1/2" (13) thick Thermal Blanket (supplied by Ruskin). Secure the thermal blanket to the damper with minimum of 16 SWG steel wire or steel clamp (supplied by others).

ITEM	DESCRIPTION
1	Floor or roof assembly
2	Steel box minimum 24 gauge
3	3/4" x 3/4" 20 gauge mounting angle
4	Minimum #8 sheet metal screw or rivet
5	1/2" thick Thermal Blanket (all sides)

ITEM	DESCRIPTION
6	16 SWG steel wire, steel clamp or nylon zip tie
7	Ceiling damper assembly
8	Duct (if required)
9	24 gauge x 1" wide duct support on 24" centers
10	Steel joist



### NOTE:

- Installation without the insulation does not provide protection of the opening. Insulation must cover surfaces as shown.
- See CFD7 Installation Instructions for optional field installed sleeve.

## LINKS TO IMPORTANT DOCUMENTS

Document Title
Quick Select Sheet
Product Data/submittals



3900 Doctor Greaves Road  
Grandview, MO 64030  
Website: [www.ruskin.com](http://www.ruskin.com)  
Phone: (816) 761-7476