

CFD7

Installation Supplement

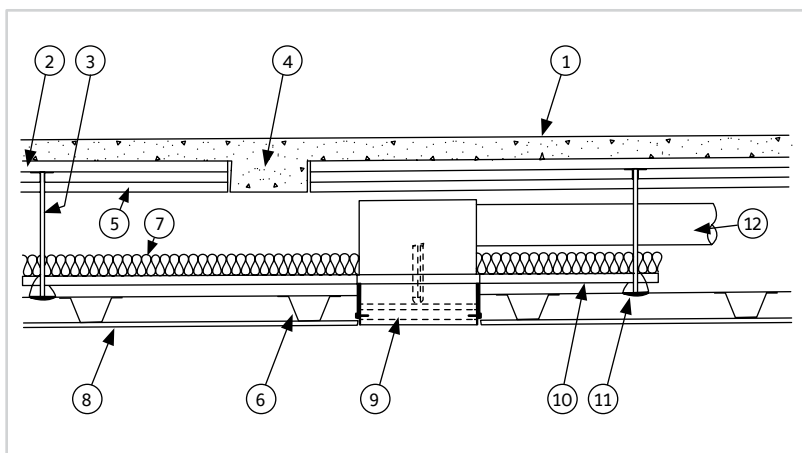
Ceiling Design G548



APPLICATION

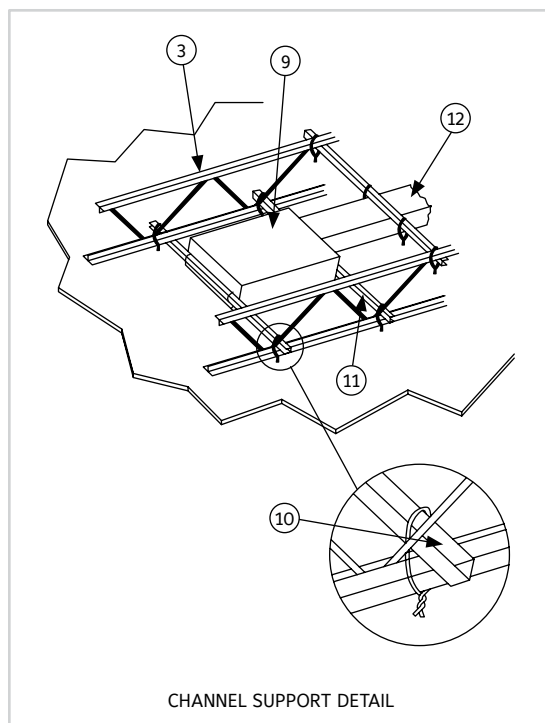
Ceiling fire dampers maintain the integrity of the fire resistive ceiling assembly. The floor/ceiling design G548 is illustrated in the current UL Fire Resistance Directory.

ITEM	DESCRIPTION
1	Normal Weight Concrete
2	Steel Floor and Form Units
3	Steel Joist
4	Isolation-Beam (Not Shown)
5	Horizontal Bridging
6	Furring Channels
7	Batts and Blankets
8	Gypsum Board
9	CFD7
10	Steel Channel 16 ga x 1 1/2" (38)
11	#18 SWG Wire
12	Duct with duct support on 24" centers (Note 3)
13	#8 Screw
14	#16 SWG Wire
15	1/2" (13) thick Thermal Blanket



NOTE:

- CFD's are shipped from the factory with the blades in the closed position. The fusible link must be installed to hold the blades in the open position at the time of installation.
- Screws, bolts, rivets, etc, **MUST NOT INTERFERE WITH BLADE OPERATION.**
- Duct to be supported by steel channel and 18 ga. wire or 18 ga. wire connected from tabs on deck. 24" (610) maximum center to center.
- Dimensions shown in parentheses () indicate millimeters.



Model CFD7 meets the requirements for fire/radiation dampers established by:

- **National Fire Protection Association**
NFPA Standards 80, 90A, 92A, 92B, and 101.
- **ICC International Building Codes**
- **CSFM California State Fire Marshal**
Listing (3225-0245:0123)



SEE COMPLETE
MARKING ON PRODUCT

UL CLASSIFIED

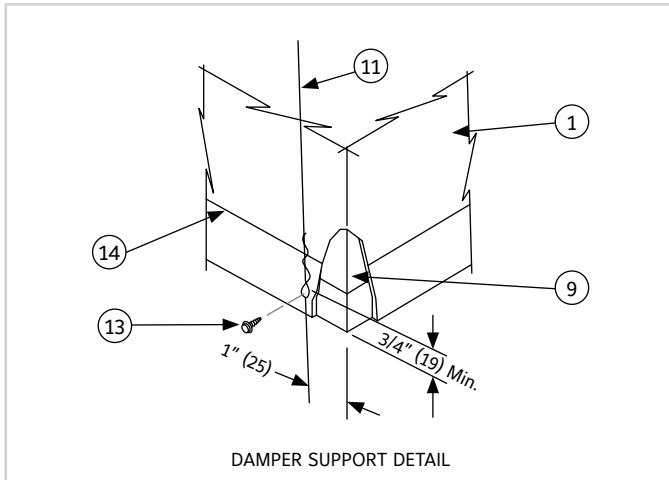
UL555C Listing R8039

INSTALLATION

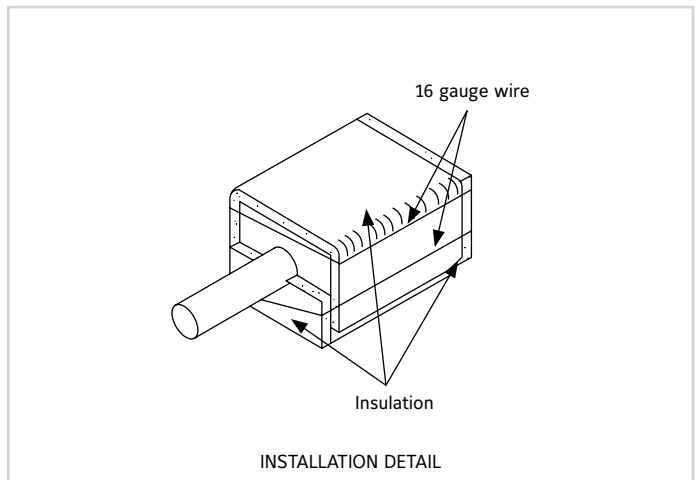
- ▶ Ceiling penetration should be located in between floor/ceiling or ceiling/roof joist. The opening in the gypsum board should have no gaps larger than 1/16" (1.5) between the damper frame and the gypsum board.
- ▶ Attach the 16 ga. x 1 1/2" (38) steel channels to the steel joist with #18 SWG wire (item #11).
- ▶ Support the damper by tying the #18 SWG wire to the steel channel. Then loop the other end of the wire around #8 screw into the bottom of the damper.
- ▶ Wrap the damper assembly with 1/2" (13) thick thermal blanket (supplied by Ruskin). Secure the thermal blanket to the damper with minimum of 16 SWG steel wire or steel clamp (supplied by others).

ITEM	DESCRIPTION
1	Normal Weight Concrete
2	Steel Floor and Form Units
3	Steel Joist
4	Isolation-Beam (Not Shown)
5	Horizontal Bridging
6	Furring Channels
7	Batts and Blankets
8	Gypsum Board

ITEM	DESCRIPTION
9	CFD7
10	Steel Channel 16 ga x 1 1/2" (38)
11	#18 SWG Wire
12	Duct with duct support on 24" centers (Note 3)
13	#8 Screw
14	#16 SWG Wire
15	1/2" (13) thick Thermal Blanket



DAMPER SUPPORT DETAIL



INSTALLATION DETAIL

NOTE:

- Installation without the insulation does not provide protection of the opening. Insulation must cover surfaces as shown.
- See CFD7 Installation Instructions for optional field installed sleeve.

i LINKS TO IMPORTANT DOCUMENTS

Document Title
Quick Select Sheet
Product Data/submittals



3900 Doctor Greaves Road
Grandview, MO 64030
Website: www.ruskin.com
Phone: (816) 761-7476