

ADC24-HP & ADH24-HP

High Pressure Doors



APPLICATION

Ruskin access doors for high pressure offer quick, easy and economical installation wherever high pressure duct access is needed. Manual locks assure tight door closure.

STANDARD CONSTRUCTION

Frame	22 gage (.8) galvanized steel with seal
Door	24 gage (.7) galvanized steel
Hinge (ADH models only)	Plated steel continuous piano type
Cam locks	Plated steel - see note 4 for quantity per door
Seals	Foam gasket
Insulation	1" (25) fiberglass

DOOR CONSTRUCTION

ADC24-HP	Removable, double skin
ADH24-HP	Hinged, double skin

DOOR SIZES

Minimum size	6"w x 6"h (152 x 152)
Maximum size	24"w x 24"h (610 x 610)

MAXIMUM OPERATIONAL RATINGS

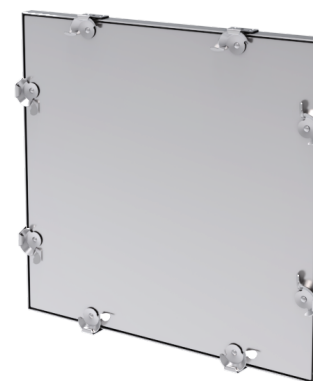
Maximum Static Pressure	Ruskin high pressure access doors have been tested to 10" w.g.
-------------------------	--

INSTALLATION

Cut hole 1 1/8" (28) smaller than door size



ADH24-HP



ADC24-HP



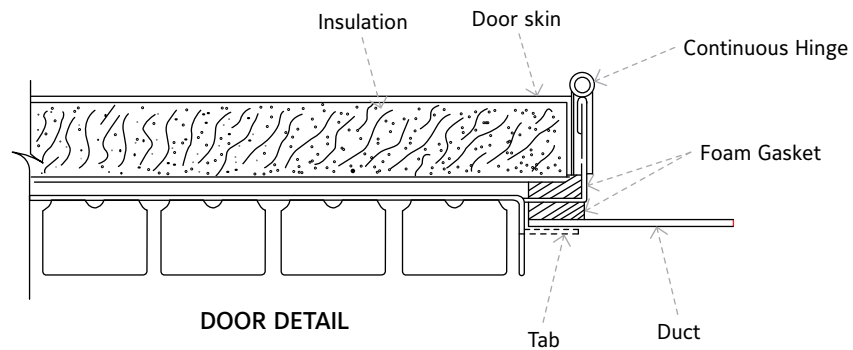
VARIATIONS

- ▶ Additional Cam Locks
- ▶ Stainless Steel Cam Locks
- ▶ Brass Plated Cam Locks
- ▶ Ventlock 100 latches
- ▶ 304 Stainless steel construction
- ▶ 20 gage (.9) door panels
- ▶ Security chain
- ▶ Stainless Steel hinge
- ▶ Wire reinforced glass window
- ▶ Neoprene door seal
- ▶ Intermediate sizes between 6" x 6" (152 x 152) and 24" x 24" (610 x 610)

NOTE:

1. Dimensions shown in parenthesis () indicate millimeters.
2. Access doors furnished actual size.
3. For doors larger than 24" x 24" (610 x 610) see GPAD.
4. ADH Models - Doors 16" (406) and under have three lock, doors over 16" (406) have six locks.
ADC Models - Doors 16" (406) and under have four locks, doors over 16" (406) have eight locks.

INSTALLATION



LINKS TO IMPORTANT DOCUMENTS

Document Title
Limited Warranty Document



3900 Doctor Greaves Road
Kansas City, MO 64030
Website: www.ruskin.com
Phone: (816) 761-7476