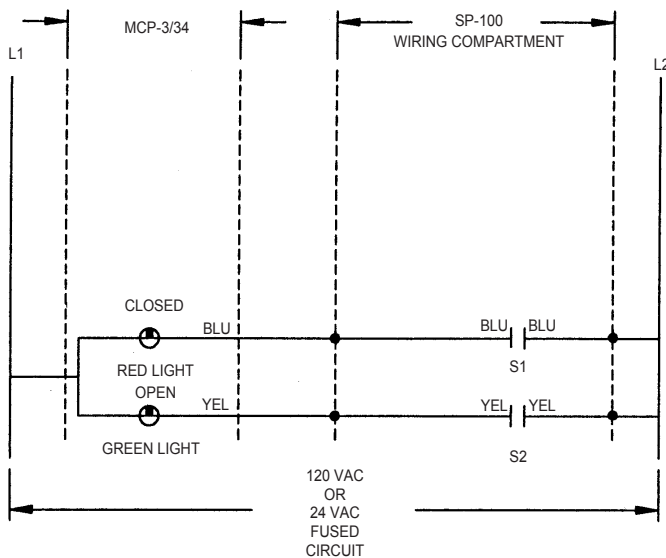


## MCP3 AND MCP34 "LIGHTS ONLY" CONTROL PANEL

### APPLICATION

The MCP3/34 is a ship loose single control panel with lights only for use with fire, smoke and fire/smoke dampers. The lights are a red light for closed damper and a green light for open damper. The MCP3 is for use in 120VAC systems while the MCP34 is for use in 24VAC systems.

- S1 - Damper Position Indication Switch, closed when damper is closed.
- S2 - Damper Position Indication Switch, closed when damper is open.



MCP3/34



3900 Dr. Greaves Rd.  
Kansas City, MO 64030  
(816) 761-7476  
FAX (816) 765-8955  
[www.ruskin.com](http://www.ruskin.com)