

# EV538

## Vertical Chevron Screen Extruded Aluminum Sightproof



### APPLICATION

The EV538 screen has variable blade spacing, which allows for high free area, added economy, or a sightproof design. It has all aluminum construction for lightweight, low maintenance, and high resistance to corrosion along with architecturally styled, hidden supports for attractive appearances.

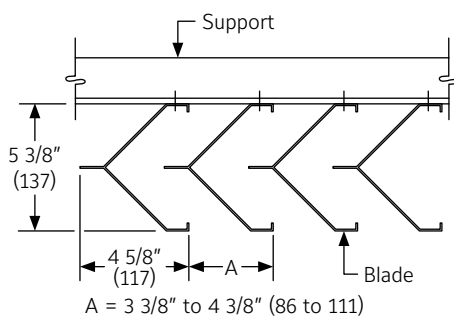
### STANDARD CONSTRUCTION

<b>Blades</b>	6063T6 extruded aluminum with .080" (2) nominal thickness, chevron style. Blades are 4 5/8" wide x 5 3/8" (117 x 137) deep, spaced as specified between 3 3/8" to 4 3/8" (86 x 111) 4 3/8" (111) is standard. Vertical arrangement is standard.
<b>Support</b>	As required per wind loading. Consult Ruskin.
<b>Finish</b>	Please see <a href="#">Paint Finishes and Color Guide</a> and <a href="#">Finish Type Model Chart</a> for more details. Contact <a href="mailto:louversales@ruskin.com">louversales@ruskin.com</a> with questions
<b>Minimum Size</b>	16"w x 12"h (406 x 305)
<b>Approximate Shipping Weight</b>	5 lbs. per sq. ft. (25 kg per m <sup>2</sup> )
<b>Maximum Factory Assembly Size</b>	Shall be 75 sq. ft. (7m <sup>2</sup> ) per section, not to exceed 120" wide and 90" high (3048 and 2286) or 90" wide and 120" high (2286 and 3048). Screens larger than the maximum factory assembly size will require field assembly of smaller sections.

### FEATURES

- ▶ Variable blade spacing allows for high free area, added economy, or a sight proof design
- ▶ Architecturally styled, hidden supports for attractive appearance
- ▶ All aluminum construction for lightweight, low maintenance, and high resistance to corrosion

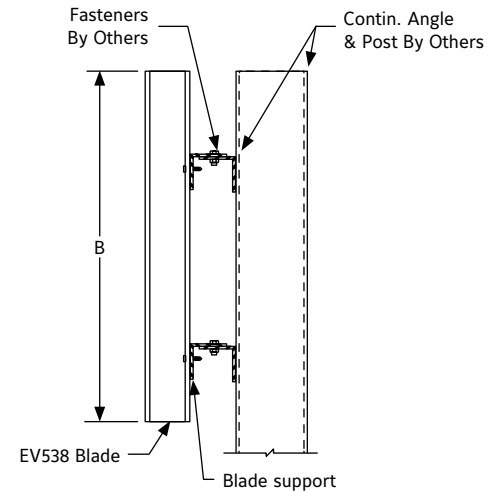
### PLAN VIEW



### LINKS TO IMPORTANT DOCUMENTS

Document Title
Paint Finishes and Color Guide
Limited Warranty Document

### TYPICAL INSTALLATION DETAIL



### SUGGESTED SPECIFICATION

Furnish and install sightproof screens as described in schedules. Screen components shall be factory assembled by manufacturer. Sizes too large for shipping shall be built up by the contractor from factory assembled sections to provide overall sizes required. Design shall incorporate blade supports required to withstand a wind load of 20 lbs. per sq. ft. (96 kPa) (equivalent of a 90 mph wind [145 KPH] – specifier may substitute any loading required) when attached to structural supports supplied by others.

Screens shall be Ruskin Model EV538 6063T6 extruded aluminum alloy construction as follows:

**Blades:** .080" (2) nominal thickness, chevron style, 4 5/8" wide x 5 3/8" deep (117 x 137), spaced at (specify) between 3 3/8" to 4 3/8" (86 to 111).

**Fasteners:** Anchorage shall be concealed and not visible on the exterior face of the screen.

**Finish:** Select finish specification from Ruskin Finishes Brochure.

**NOTE:**

- Dimensions in parenthesis ( ) indicate millimeters.
- Units are furnished actual size.



3900 Doctor Greaves Road  
Grandview, MO 64030  
Website: [www.ruskin.com](http://www.ruskin.com)  
Phone: (816) 761-7476