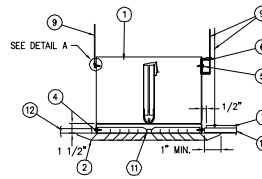


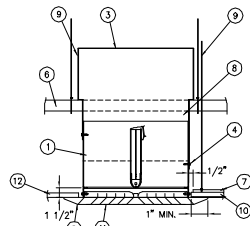
INSTALLATION 1  
DUCTLESS RETURN AND  
FLEX DUCT SUPPLY



DUCTLESS AND FLEX DUCT SUPPLY

- | ITEM | DESCRIPTION  |
|------|--|
| 1.   | DAMPER   |
| 2.   | GRILLE FRAME (20 GA. MIN.)                         |
| 3.   | DUCT (WHERE SHOWN)                                 |
| 4.   | #8 SHEET METAL SCREW                               |
| 5.   | #10 SHEET METAL SCREW                              |
| 6.   | 16 MSG X 1 1/2" CHANNEL                            |
| 7.   | CEILING GRID (UL CLASSIFIED)                       |
| 8.   | DUCT DROP (WHERE SHOWN)                            |
| 9.   | 12 SWG STEEL WIRE                                  |
| 10.  | ACOUSTICAL LAY-IN PANELS (UL CLASSIFIED)           |
| 11.  | DIFFUSER OR GRILLE CORE (METALLIC OR NON-METALLIC) |
| 12.  | RIGID GYPSUM WALL BOARD CEILING (UL CLASSIFIED)    |

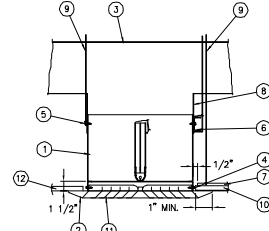
INSTALLATION 2  
DAMPER WITH DUCT SUPPORT



STEEL DUCT WITH DUCT SUPPORT

- | ITEM | DESCRIPTION  |
|------|--|
| 1.   | DAMPER   |
| 2.   | GRILLE FRAME (20 GA. MIN.)                         |
| 3.   | DUCT   |
| 4.   | #8 SHEET METAL SCREW                               |
| 5.   | #10 SHEET METAL SCREW                              |
| 6.   | 16 MSG X 1 1/2" CHANNEL                            |
| 7.   | CEILING GRID (UL CLASSIFIED)                       |
| 8.   | DUCT DROP  |
| 9.   | 12 SWG STEEL WIRE                                  |
| 10.  | ACOUSTICAL LAY-IN PANELS (UL CLASSIFIED)           |
| 11.  | DIFFUSER OR GRILLE CORE (METALLIC OR NON-METALLIC) |
| 12.  | RIGID GYPSUM WALL BOARD CEILING (UL CLASSIFIED)    |

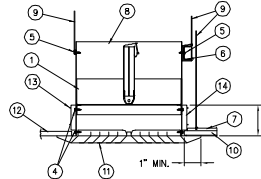
INSTALLATION 3  
DUCT WITH DAMPER SUPPORT  
(RECTANGULAR DAMPER ONLY)



STEEL DUCT WITH DAMPER SUPPORT

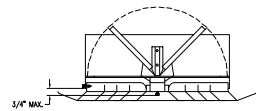
- | ITEM | DESCRIPTION  |
|------|--|
| 1.   | DAMPER   |
| 2.   | GRILLE FRAME (20 GA. MIN.)                         |
| 3.   | DUCT   |
| 4.   | #8 SHEET METAL SCREW                               |
| 5.   | #10 SHEET METAL SCREW                              |
| 6.   | 16 MSG X 1 1/2" CHANNEL                            |
| 7.   | CEILING GRID (UL CLASSIFIED)                       |
| 8.   | DUCT DROP  |
| 9.   | 12 SWG STEEL WIRE                                  |
| 10.  | ACOUSTICAL LAY-IN PANELS (UL CLASSIFIED)           |
| 11.  | DIFFUSER OR GRILLE CORE (METALLIC OR NON-METALLIC) |
| 12.  | RIGID GYPSUM WALL BOARD CEILING (UL CLASSIFIED)    |

INSTALLATION 5  
ASSEMBLY HEIGHT



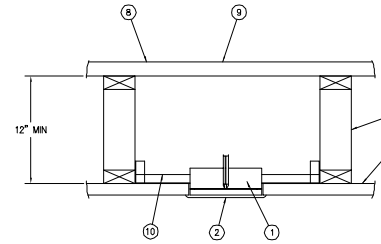
- | ITEM | DESCRIPTION   |
|------|---|
| 1.   | DAMPER  |
| 2.   | GRILLE FRAME (20 GA. MIN.)                          |
| 3.   | DUCT (WHERE SHOWN)                                  |
| 4.   | #8 SHEET METAL SCREW                                |
| 5.   | #10 SHEET METAL SCREW                               |
| 6.   | 16 MSG X 1 1/2" CHANNEL                             |
| 7.   | CEILING GRID (UL CLASSIFIED)                        |
| 8.   | DUCT DROP (WHERE SHOWN)                             |
| 9.   | 12 SWG STEEL WIRE                                   |
| 10.  | ACOUSTICAL LAY-IN PANELS (UL CLASSIFIED)            |
| 11.  | DIFFUSER OR GRILLE CORE (METALLIC OR NON-METALLIC)  |
| 12.  | RIGID GYPSUM WALL BOARD CEILING (UL CLASSIFIED)     |
| 13.  | 16 SWG STEEL WIRE                                   |
| 14.  | THERMAL BLANKET INSULATION-REFRACTORY CERAMIC FIBER |

INSTALLATION 4  
VOLUME ADJUSTMENT CONTROL



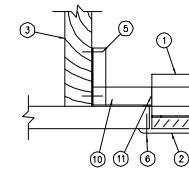
DETAIL A  
HANGING WIRE & LOOP

INSTALLATION 6  
WOOD TRUSS WITH GYPBOARD CEILING

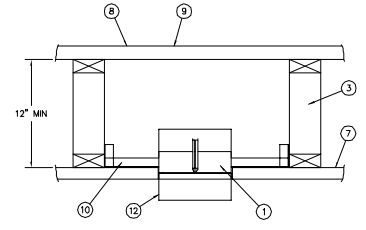


- | ITEM | DESCRIPTION                                   |
|------|---|
| 1.   | DAMPER  |
| 2.   | GRILLE FRAME (STEEL OR ALUM)                  |
| 3.   | WOOD FRAMING MEMBER OR JOIST                  |
| 4.   | #8 SHEET METAL SCREW                          |
| 5.   | #6 PENNY NAIL OR #8 SCREW                     |
| 6.   | 3/16\" DIA STEEL RIVET                        |
| 7.   | 5/8\" GYPSUM WALLBOARD                        |
| 8.   | FLOOR CONSTRUCTION                            |
| 9.   | FLOOR CONSTRUCTION                            |
| 10.  | 1\" X 1/2\" 20GA MIN GALV MOUNTING ANGLE      |
| 11.  | 1\" X 1/2\" X 3\" 20GA MIN GALV MOUNTING CLIP |
| 12.  | 3\" GALVANIZED COLLAR (OPTIONAL)              |

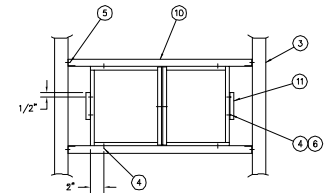
MOUNTING DETAIL



INSTALLATION 7  
DAMPER IN SLEEVE FOR  
DUCT PENETRATION



INSTALLATION 6A



INSTALLATION 6B

