

SP100-DTS-SD

Operation Instruction Supplement

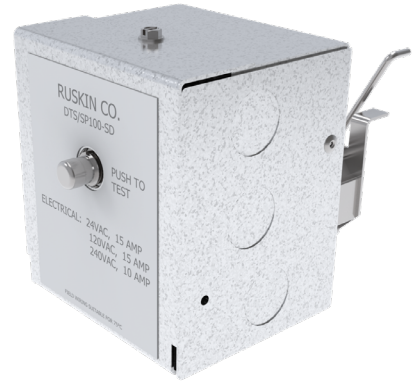
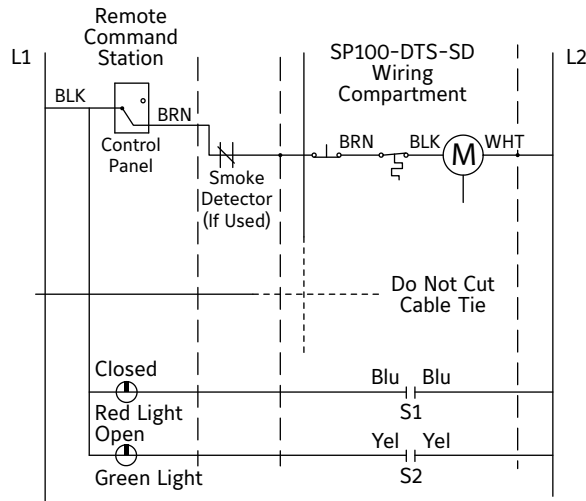
Damper Test Switch and Switch Package



APPLICATION

The SP100-DTS-SD is a combination SP100 blade position switches and damper test switch (DTS-SD). The Damper Test Switch (DTS-SD) is an optional “momentary” push button test switch available on Ruskin smoke dampers. The DTS-SD gives maintenance personnel the ability to “cycle test” the smoke damper by pushing and holding the button until the damper has cycled. The SP100-DTS-SD meets the testing requirements for NFPA80 and 105 for smoke dampers.

WIRING DIAGRAM



SEE COMPLETE MARKING ON PRODUCT

S1 and S2 Switch AMP Ratings: 15 AMPS, @ 24, 125 or 250 VAC 1/2 AMP, @ 125 VDC, 1/4 AMP, @ 250 VDC

NOTE: Dimensions shown in parentheses () indicate millimeters.

LINKS TO IMPORTANT DOCUMENTS

Document Title
Limited Warranty Document



3900 Doctor Greaves Road
Grandview, MO 64030
Website: www.ruskin.com
Phone: (816) 761-7476